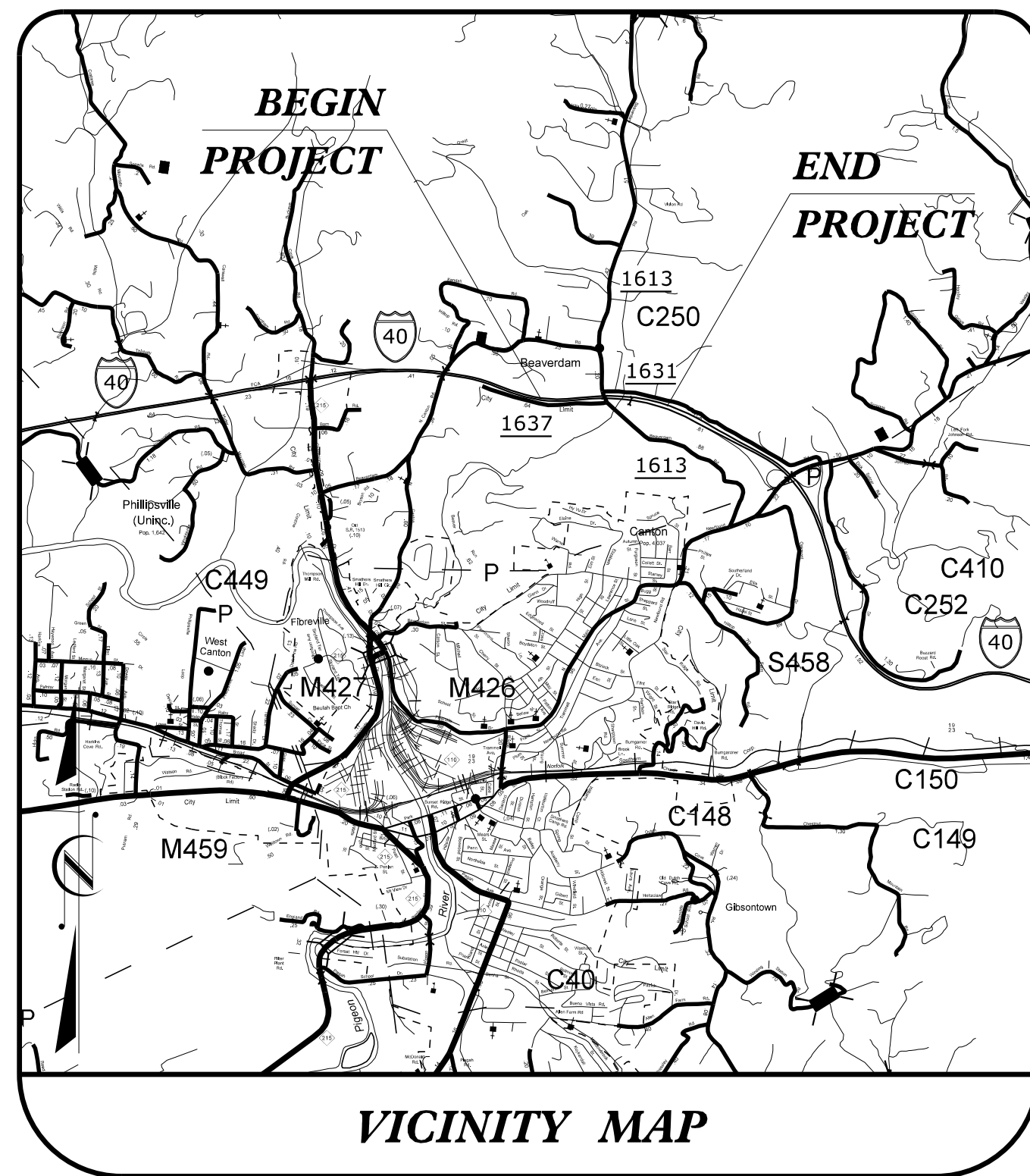
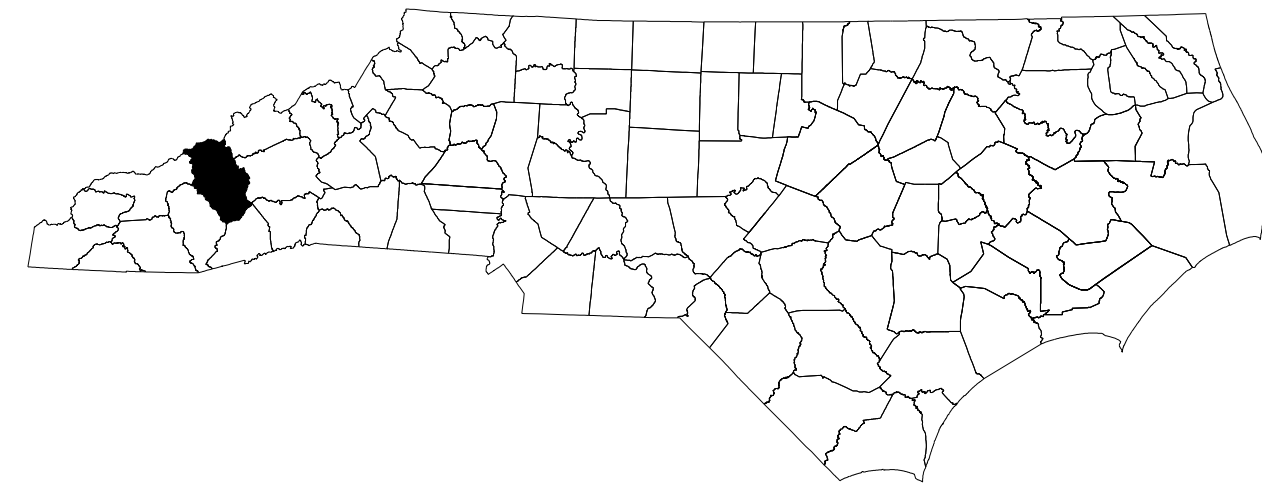


STATE OF NORTH CAROLINA
DIVISION OF HIGHWAYS

TRANSPORTATION MANAGEMENT PLAN

HAYWOOD COUNTY



LOCATION: BRIDGES 248 & 249 ON I-40 OVER SR 163 (BEAVERDAM ROAD)

TYPE OF WORK: GRADING, DRAINAGE, PAVING, & STRUCTURE.

INDEX OF SHEETS

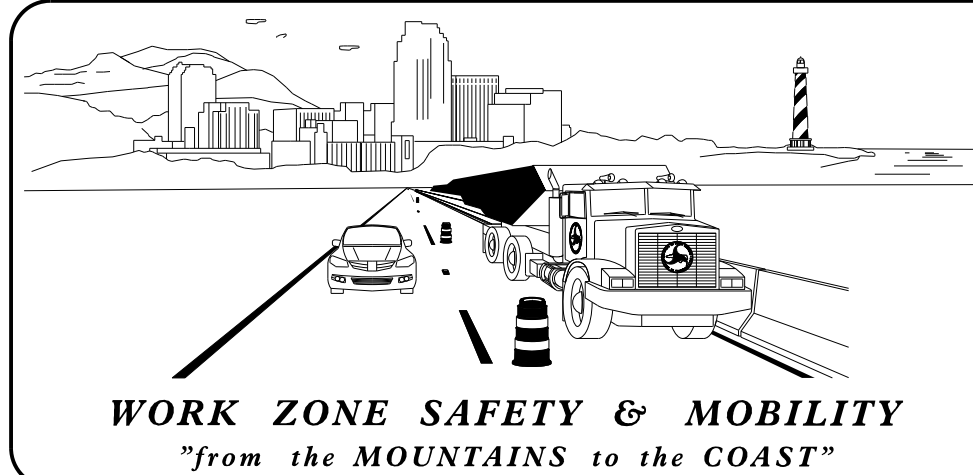
| SHEET NO. | TITLE |
|------------------|---|
| TMP-01 | TITLE SHEET, VICINITY MAP, AND INDEX OF SHEETS |
| TMP-01A | LIST OF APPLICABLE ROADWAY STANDARD DRAWINGS, AND LEGEND |
| TMP-01B THRU 01C | TRANSPORTATION OPERATIONS PLAN: (MANAGEMENT STRATEGIES AND GENERAL NOTES) |
| TMP-01D | OFFSITE DETOUR SIGNING AND DEVICE LEGEND |
| TMP-02 THRU 02A | OFFSITE DETOURS |
| TMP-02B | SPECIAL SIGN DESIGN(S) |
| TMP-02C | PORTABLE CONCRETE BARRIER AT TEMPORARY SHORING LOCATIONS |
| TMP-02D | TEMPORARY SHORING DATA |
| TMP-02E | TEMPORARY SIGNAL AT BEAVERDAM RD AND NEWFOUND RD |
| TMP-02F | DYNAMIC ZIPPER MERGE SYSTEM LAYOUT |
| TMP-03 | TEMPORARY TRAFFIC CONTROL PHASING |
| TMP-04 THRU 06C | TEMPORARY TRAFFIC CONTROL PHASE I DETAIL |
| TMP-07 THRU 09 | TEMPORARY TRAFFIC CONTROL PHASE II DETAIL |
| TMP-10 THRU 12 | TEMPORARY TRAFFIC CONTROL PHASE III DETAIL |
| TMP-13 THRU 15 | TEMPORARY TRAFFIC CONTROL PHASE IV DETAIL |
| TMP-16 THRU 18 | TEMPORARY TRAFFIC CONTROL PHASE V DETAIL |
| TMP-19 THRU 32 | TEMPORARY CUT SECTIONS |

SHEET NO.
TMP-01

HB-0002

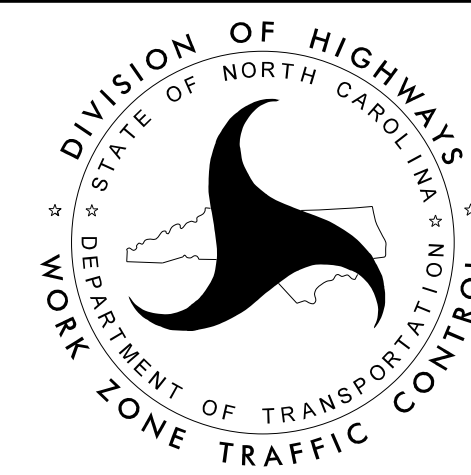
TIP PROJECT:

3/26/2024 \\wei-fs01\projects\2021\2147.07_HB-0002\Traffic\Traffic\Design\Pre-Left\Plan\WZTC_AR\HB-0002_TMP_01 Title.dgn User:AHayes

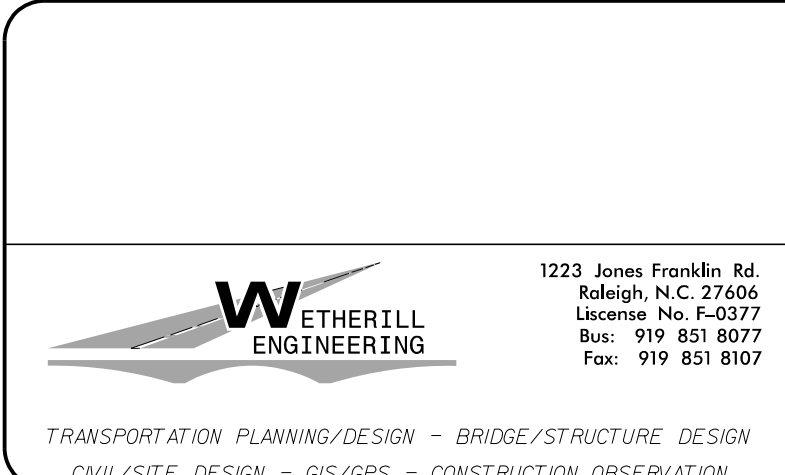


PLANS PREPARED BY:
JONATHAN HEFNER, P.E.
D. ALLEN HAYES, E.I.

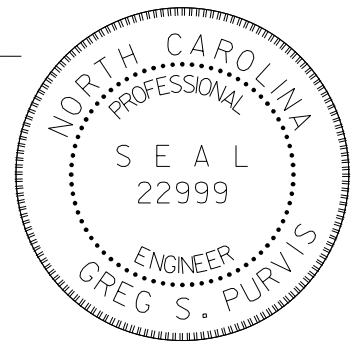
NCDOT CONTACTS:
ZACH SHULER
PROJECT ENGINEER
PROJECT DESIGN ENGINEER



DOCUMENT NOT CONSIDERED FINAL UNLESS ALL SIGNATURES COMPLETED



APPROVED: Greg S. Purvis
DATE: 3/26/2024
SEAL



TRANSPORTATION PLANNING/DESIGN - BRIDGE/STRUCTURE DESIGN
CIVIL/SITE DESIGN - GIS/GPS - CONSTRUCTION OBSERVATION