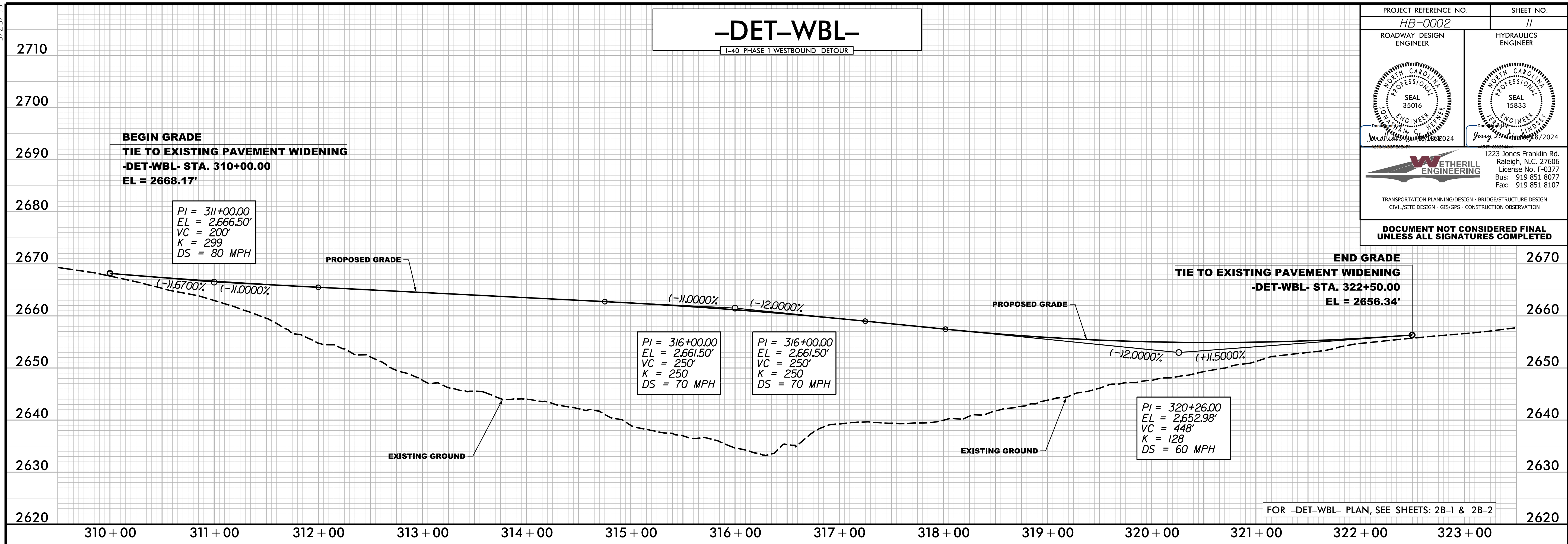


5/28/24

-DET-WBL-

L-40 PHASE 1 WESTBOUND DETOUR

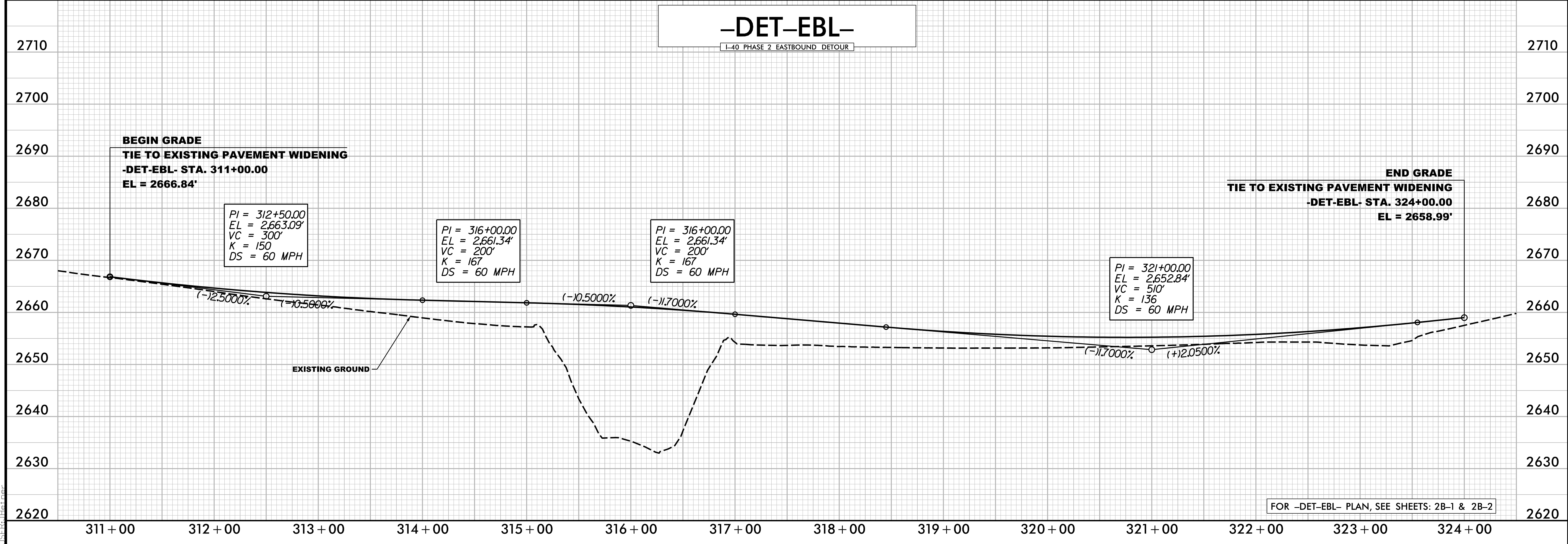
PROJECT REFERENCE NO. HB-0002	SHEET NO. 11
ROADWAY DESIGN ENGINEER	HYDRAULICS ENGINEER
 1223 Jones Franklin Rd. Raleigh, N.C. 27606 License No. F-0377 Bus: 919 851 8077 Fax: 919 851 8107	
TRANSPORTATION PLANNING/DESIGN - BRIDGE/STRUCTURE DESIGN CIVIL/SITE DESIGN - GIS/GPS - CONSTRUCTION OBSERVATION	
DOCUMENT NOT CONSIDERED FINAL UNLESS ALL SIGNATURES COMPLETED	



FOR -DET-WBL- PLAN, SEE SHEETS: 2B-1 & 2B-2

-DET-EBL-

L-40 PHASE 2 EASTBOUND DETOUR



FOR -DET-EBL- PLAN, SEE SHEETS: 2B-1 & 2B-2

3/15/2024 H:\002_rdy_psh_11.plt.dgn
11:55:10 AM