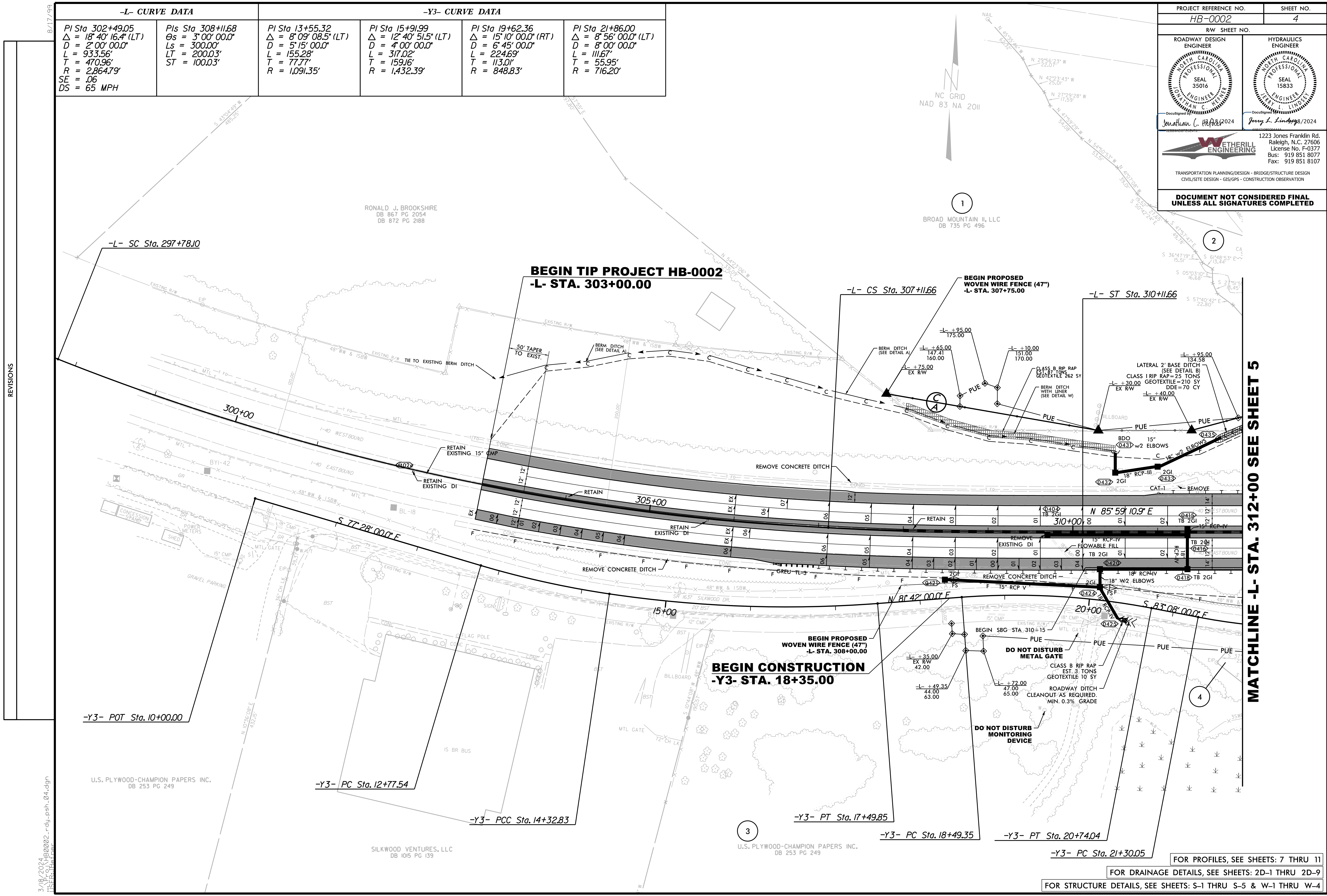


-L- CURVE DATA		-Y3- CURVE DATA			
PI Sta 302+49.05 Δ = 18° 40' 16.4" (LT) D = 2' 00' 00.0" L = 933.56' T = 470.96' R = 2,864.79' SE = .06 DS = 65 MPH	PIs Sta 308+11.68 Θs = 3° 00' 00.0" Ls = 300.00' LT = 200.03' ST = 100.03'	PI Sta 13+55.32 Δ = 8° 09' 08.5" (LT) D = 5' 15' 00.0" L = 155.28' T = 77.77' R = 1,091.35'	PI Sta 15+91.99 Δ = 12° 40' 51.5" (LT) D = 4' 00' 00.0" L = 317.02' T = 159.16' R = 1,432.39'	PI Sta 19+62.36 Δ = 15° 10' 00.0" (RT) D = 6' 45' 00.0" L = 224.69' T = 113.01' R = 848.83'	PI Sta 21+86.00 Δ = 8° 56' 00.0" (LT) D = 8' 00' 00.0" L = 111.67' T = 55.95' R = 716.20'

PROJECT REFERENCE NO. <b>HB-0002</b>	SHEET NO. <b>4</b>
ROADWAY DESIGN ENGINEER <b>WETHERILL ENGINEERING</b> SEAL 35016 JONATHAN C. HEBER	HYDRAULICS ENGINEER <b>WETHERILL ENGINEERING</b> SEAL 15833 JERRY L. LINDSEY
DocuSign Jonathan C. Heber/2024	DocuSign Jerry L. Lindsey/2024
1223 Jones Franklin Rd. Raleigh, N.C. 27606 License No. F-0377 Bus: 919 851 8077 Fax: 919 851 8107	
TRANSPORTATION PLANNING/DESIGN - BRIDGE/STRUCTURE DESIGN CIVIL/SITE DESIGN - GIS/GPS - CONSTRUCTION OBSERVATION	
<b>DOCUMENT NOT CONSIDERED FINAL UNLESS ALL SIGNATURES COMPLETED</b>	



REVISIONS

MATCHLINE -L- STA. 312+00 SEE SHEET 5

3/18/2024 HB0002\_rdy\_psh\_04.dgn  
11:51:11 AM

FOR PROFILES, SEE SHEETS: 7 THRU 11  
 FOR DRAINAGE DETAILS, SEE SHEETS: 2D-1 THRU 2D-9  
 FOR STRUCTURE DETAILS, SEE SHEETS: S-1 THRU S-5 & W-1 THRU W-4