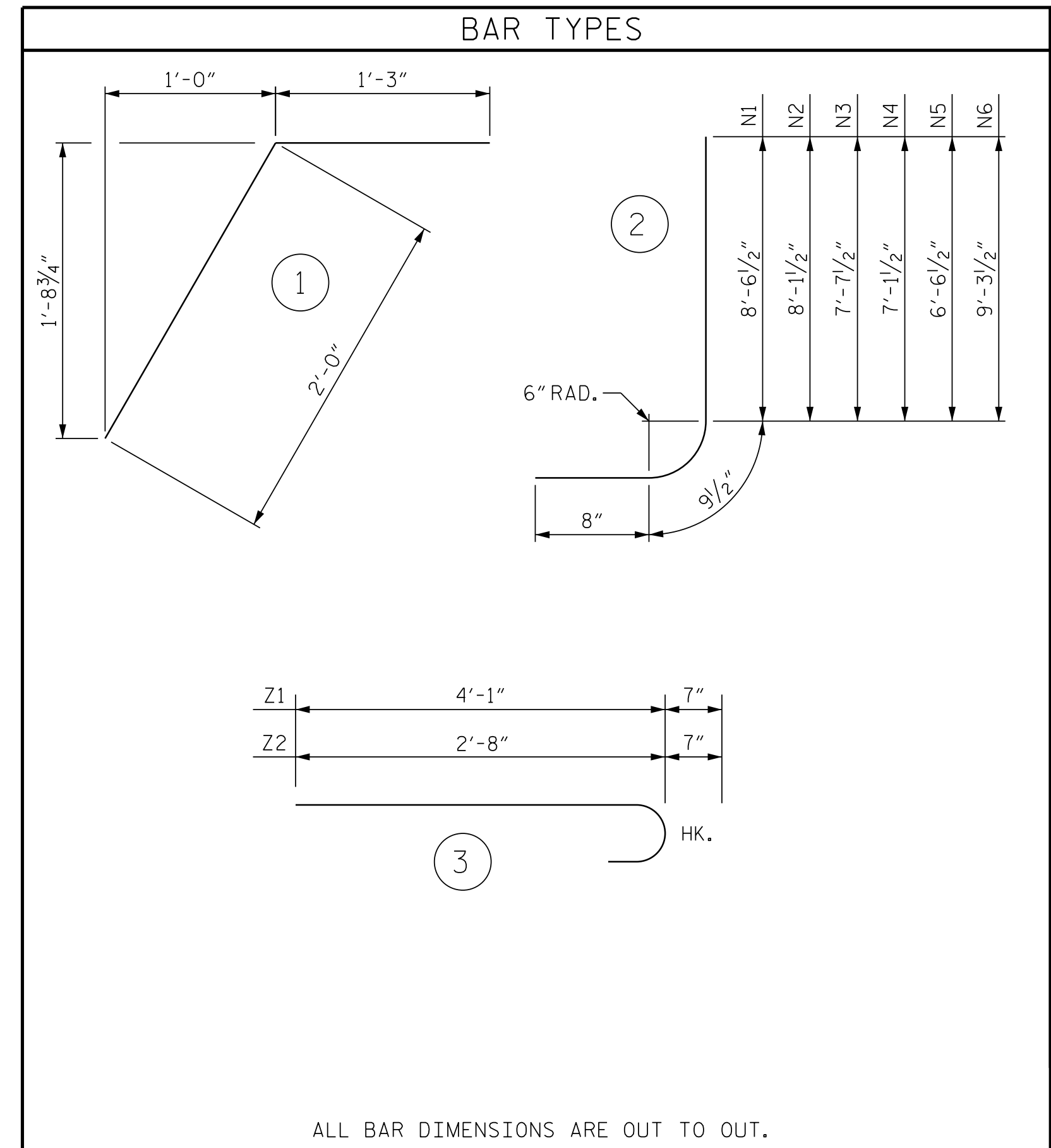
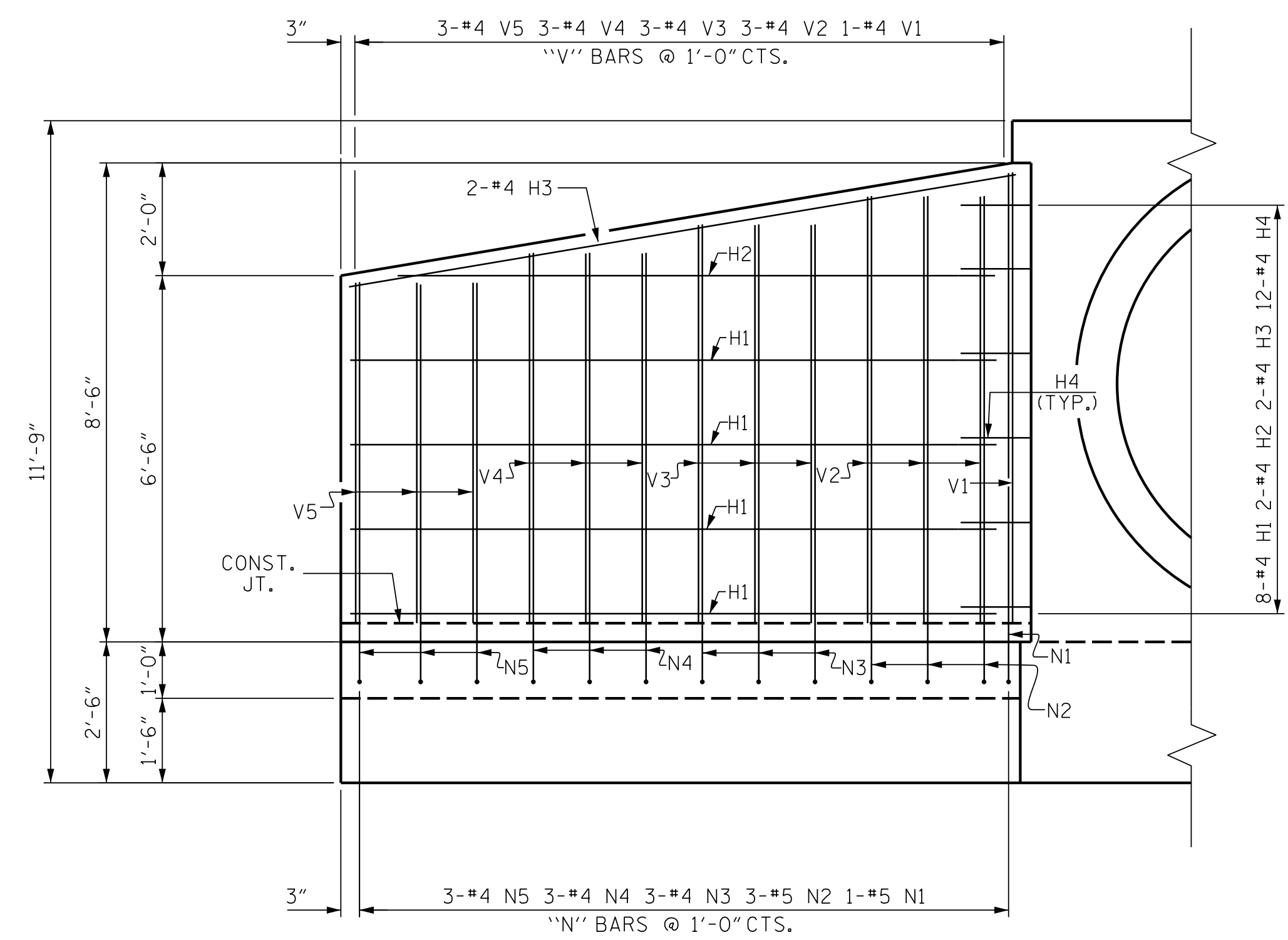


WING PLAN

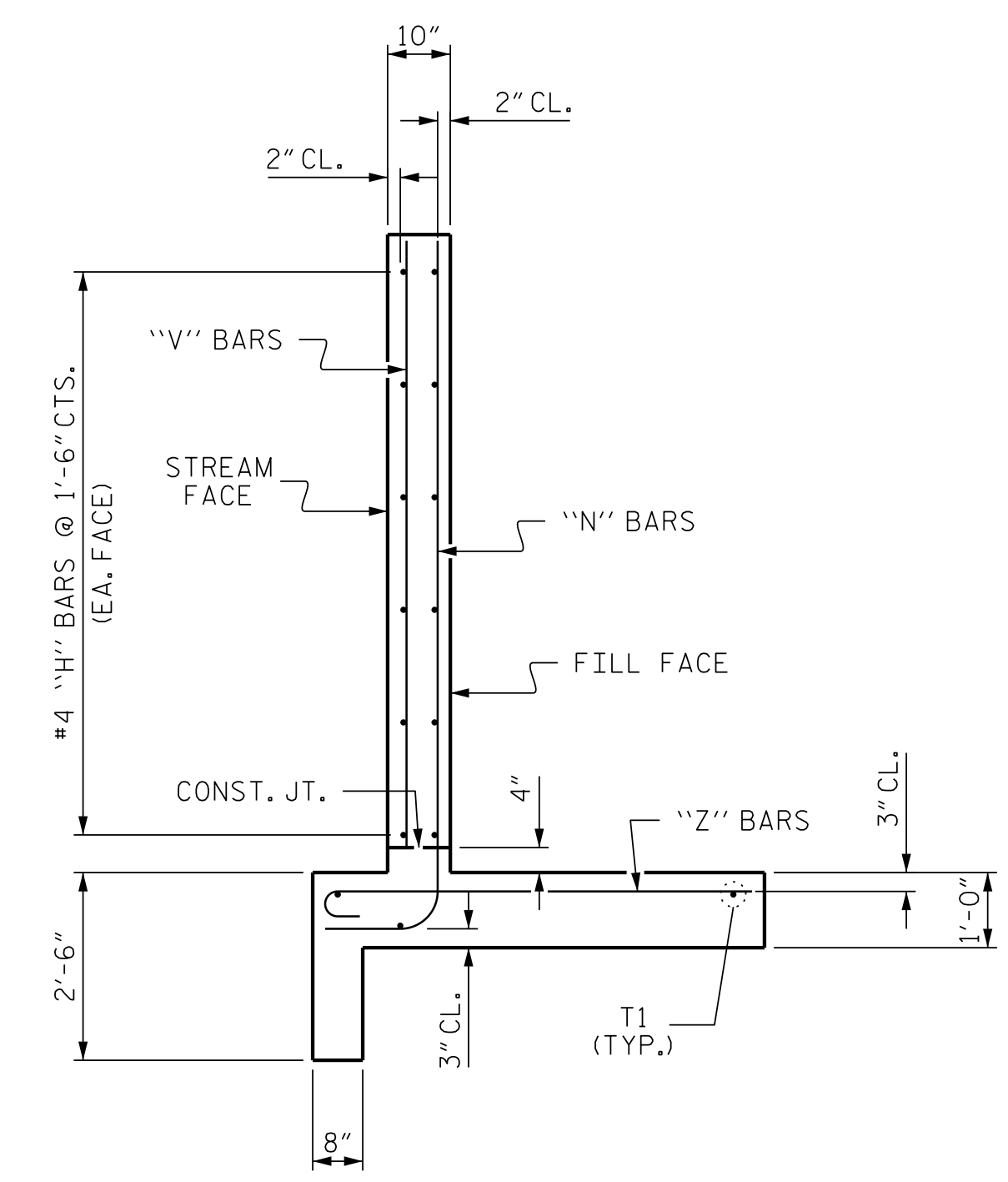


ALL BAR DIMENSIONS ARE OUT TO OUT.

BILL OF MATERIAL					
BAR	NO.	SIZE	TYPE	LENGTH	WEIGHT
G1	2	#7	STR	10'-8"	44
H1	16	#4	STR	11'-5"	122
H2	4	#4	STR	10'-7"	28
H3	4	#4	STR	12'-0"	32
H4	24	#4	1	3'-3"	52
N1	2	#5	2	10'-0"	21
N2	6	#5	2	9'-7"	60
N3	6	#5	2	9'-1"	57
N4	6	#5	2	8'-7"	54
N5	6	#5	2	8'-0"	50
N6	6	#5	2	10'-9"	67
T1	8	#5	STR	11'-8"	97
T2	3	#5	STR	14'-9"	46
V1	2	#4	STR	8'-0"	11
V2	6	#4	STR	7'-6"	30
V3	6	#4	STR	7'-0"	28
V4	6	#4	STR	6'-6"	26
V5	6	#4	STR	6'-0"	24
V6	6	#4	STR	8'-8"	35
Z1	26	#5	3	4'-8"	127
Z2	6	#5	3	3'-3"	20
REINFORCING STEEL FOR ENDWALL, 2 WINGS & FOOTING				1031	LBS
CLASS A CONCRETE					
* 1 ENDWALL				1.4	CY
2 WINGS				5.7	CY
1 END CURTAIN WALL				0.3	CY
FOOTING & TOE WALLS				6.5	CY
TOTAL				13.9	CY
* 1.7 CU. YD. DEDUCTION FOR SINGLE 84" RC PIPE					



WING ELEVATION



TYPICAL WING SECTION



DocuSigned by:
John Arthur Dilworth
3/7/2024

WETHERILL ENGINEERING
1223 Jones Franklin Rd.
Raleigh, N.C. 27606
License No. F-0377
Bus: 919 851 8077
Fax: 919 851 8107

TRANSPORTATION PLANNING/DESIGN - BRIDGE/STRUCTURE DESIGN
CIVIL/SITE DESIGN - GIS/GPS - CONSTRUCTION OBSERVATION

**DOCUMENT NOT CONSIDERED FINAL
UNLESS ALL SIGNATURES COMPLETED**

**REINFORCED CONCRETE ENDWALL
FOR SINGLE 84" DIAMETER PIPE**
SHEET 2 OF 2

ORIGINAL BY: _____ DATE: _____
MODIFIED BY: _____ DATE: _____
CHECKED BY: _____ DATE: _____
FILE SPEC.: _____