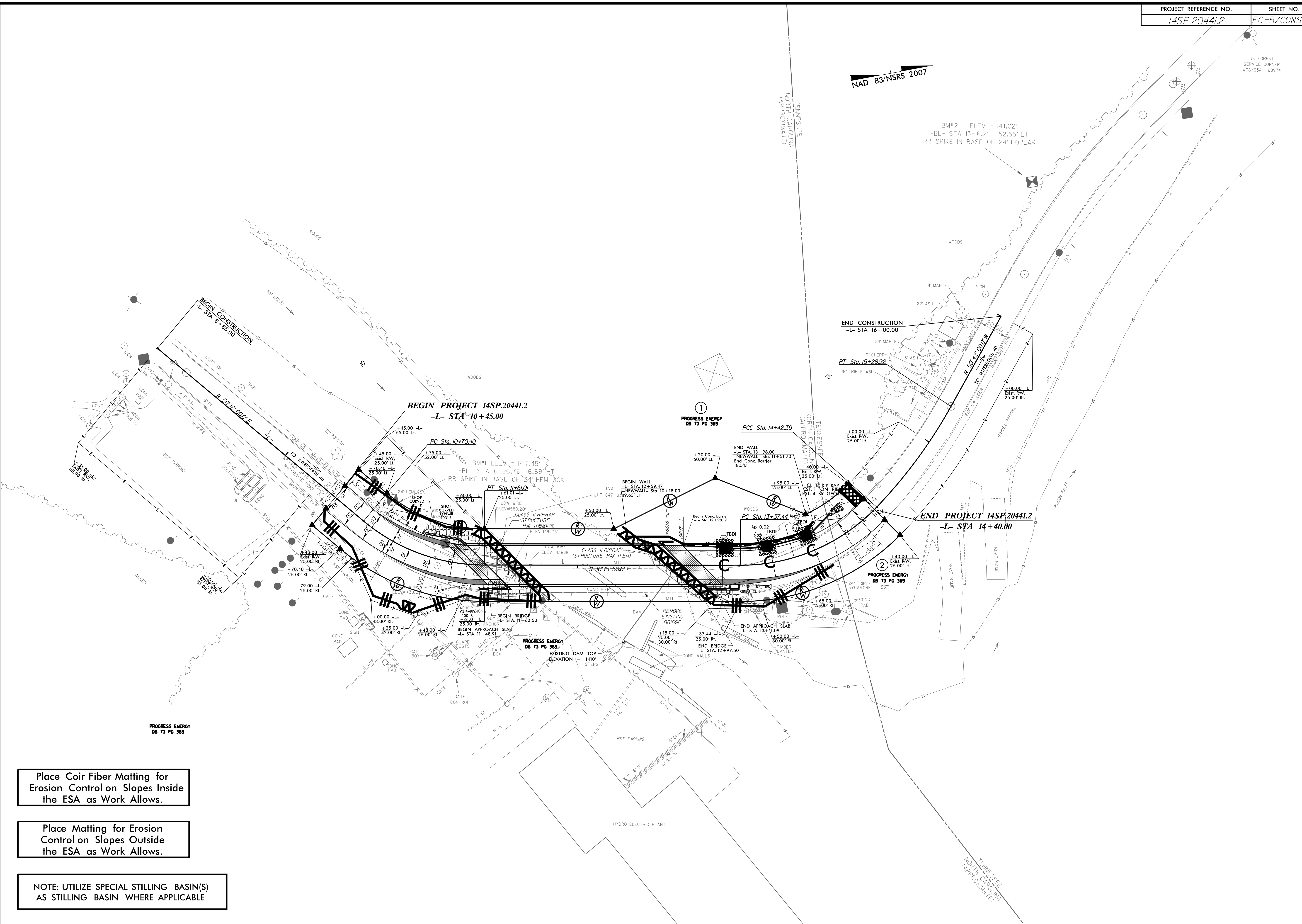


US FOREST SERVICE CORNER WCB/934 168974

NAD 83/NSRS 2007

BM#2 ELEV = 1411.02'
-BL- STA 13+16.29 52.55' LT
RR SPIKE IN BASE OF 24" POPLAR



Place Coir Fiber Matting for Erosion Control on Slopes Inside the ESA as Work Allows.

Place Matting for Erosion Control on Slopes Outside the ESA as Work Allows.

NOTE: UTILIZE SPECIAL STILLING BASIN(S) AS STILLING BASIN WHERE APPLICABLE

3/2/2018 V:\Asheville\Transportation\31236-08 MTC 14SP.20441.2 Haywood 174\Environmental\174_Env_EC-5.dgn User:cmartell