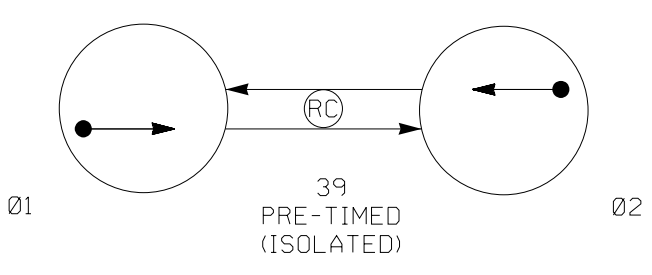


PHASING DIAGRAM



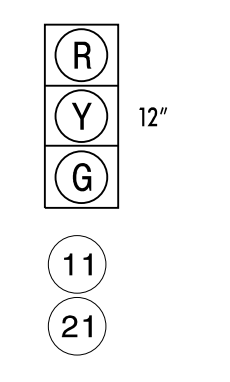
PHASING DIAGRAM DETECTION LEGEND

- ←●→ DETECTED MOVEMENT
- ←○→ UNDETECTED MOVEMENT (OVERLAP)
- UNSIGNALIZED MOVEMENT
- PEDESTRIAN MOVEMENT

TABLE OF OPERATION

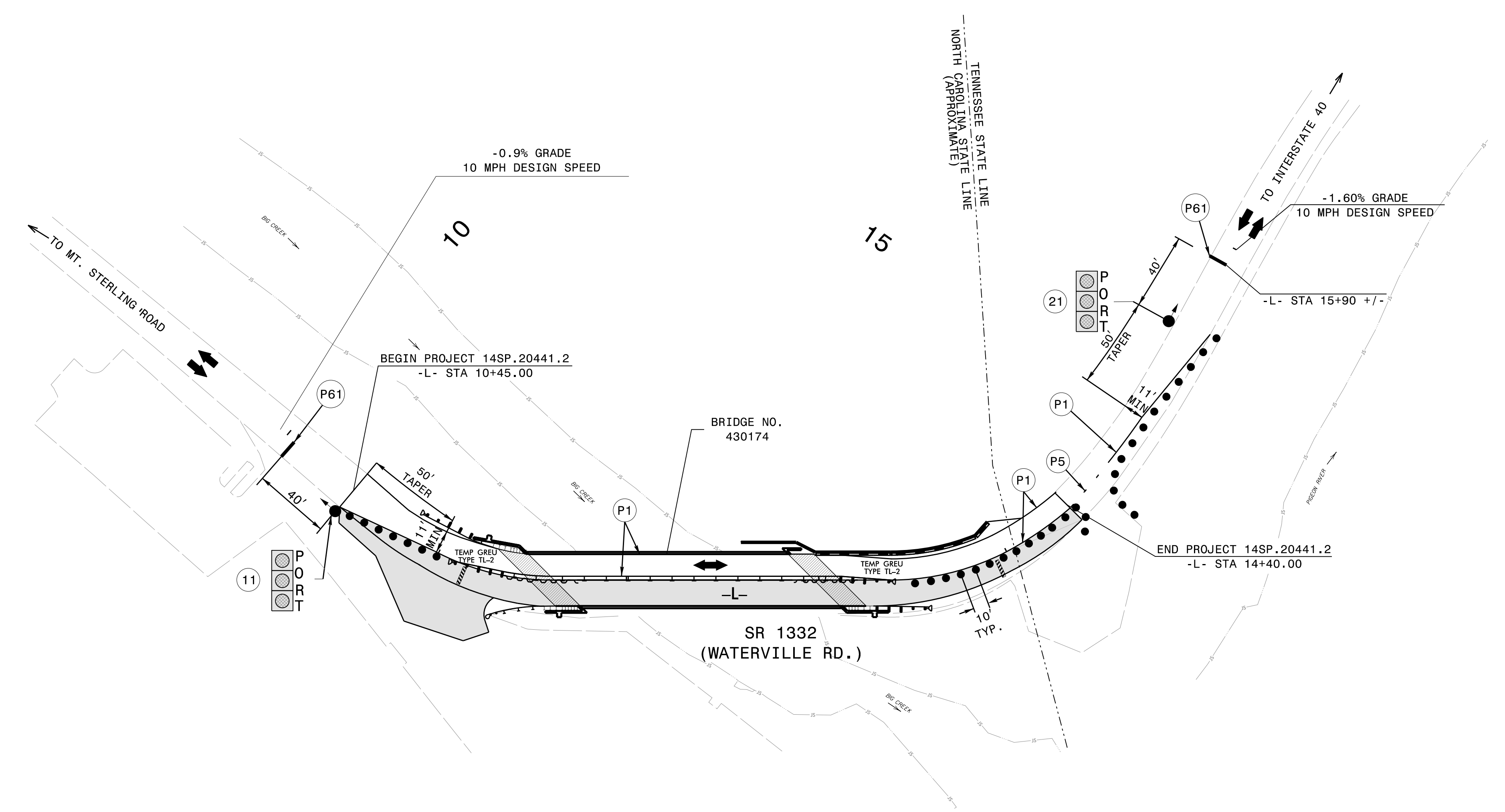
SIGNAL FACE	02		01		F L T H
	CLEAR	R	CLEAR	R	
11	R	R	G	Y	R
21	G	Y	R	R	R

SIGNAL FACE I.D.



NOTES

1. PORTABLE TEMPORARY INSTALLATION.
2. SIGNAL HEADS SHALL BE NO CLOSER THAN 40 FEET FROM THE STOPLINE.
3. NO COUNTS AVAILABLE.
4. CONTRACTOR TO UTILIZE NCDOT PRE-APPROVED PORTABLE TRAFFIC SIGNAL MANUFACTURER AND MODEL.



TIMING CHART
NEMA CONTROLLER

PHASE	01	02
MINIMUM GREEN	27 SEC.	27 SEC.
PASSAGE GAP	0 SEC.	0 SEC.
YELLOW CHANGE INT.	3.0 SEC.	3.0 SEC.
RED CLEARANCE	45 SEC.	45 SEC.
MAX. I	45 SEC.	45 SEC.
RECALL POSITION	MAX. RECALL	MAX. RECALL
VEH. CALL MEMORY	-	-

NOTE:
PORTABLE TRAFFIC SIGNAL LAYOUT COVERS PHASE I AND PHASE II.

**DOCUMENT NOT CONSIDERED FINAL
UNLESS ALL SIGNATURES COMPLETED**

PORTABLE TRAFFIC SIGNAL PLAN
SR 1332 WATERVILLE ROAD

DIV. 14 HAYWOOD COUNTY

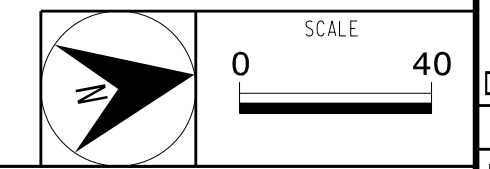
PLAN DATE: 07/25/2016 REVIEWED BY: LDB

PREPARED BY: CGM REVIEWED BY:

REVISIONS	INIT.	DATE

DocuSigned by: 12/15/2023

SIG. INVENTORY NO.



JMT Prepared in the Office of:
JOHNSON, MIRMIRAN, & THOMPSON, INC.
1318 Patton Avenue, Suite F,
Asheville NC, 28806

12/15/2023 10:37:34 AM V:\Asheville\Transportation\3\236-08 WTC 14SP.20441.2 Haywood 174\TrafficControl\CP\haywood174_TC_sig-1.dgn User:cmriddle