

SET CMS BOARD ON SR 1332 (WATERVILLE RD.) JUST NORTH OF THE INTERSECTION OF SR 1332 AND SR 1397 (MT. STERLING RD.)

MESSAGE NO. 1	MESSAGE NO. 2
ROAD WORK AHEAD	3/4 MILE USE CAUTION

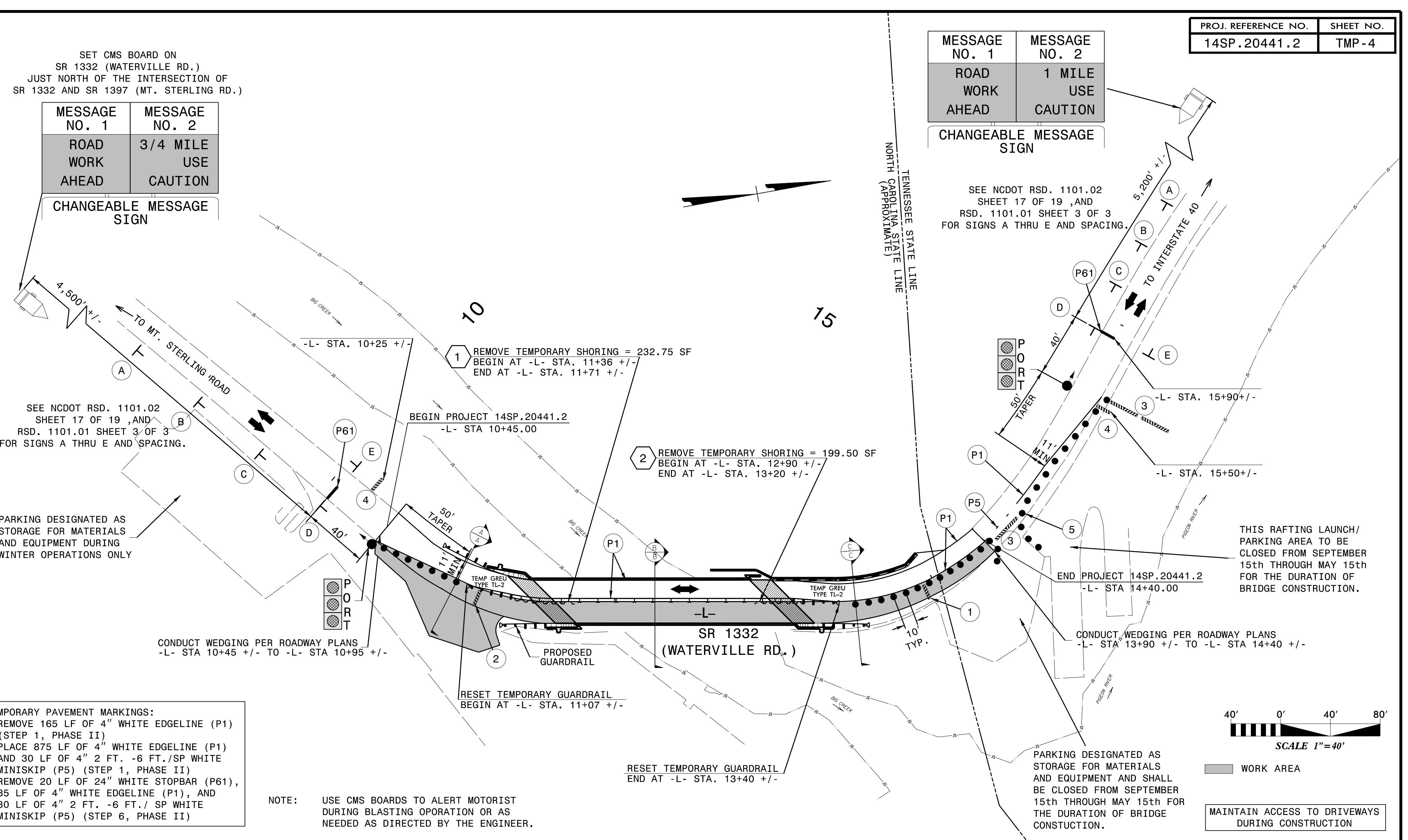
CHANGEABLE MESSAGE SIGN

SEE NCDOT RSD. 1101.02 SHEET 17 OF 19 AND RSD. 1101.01 SHEET 3 OF 3 FOR SIGNS A THRU E AND SPACING.

PARKING DESIGNATED AS STORAGE FOR MATERIALS AND EQUIPMENT DURING WINTER OPERATIONS ONLY

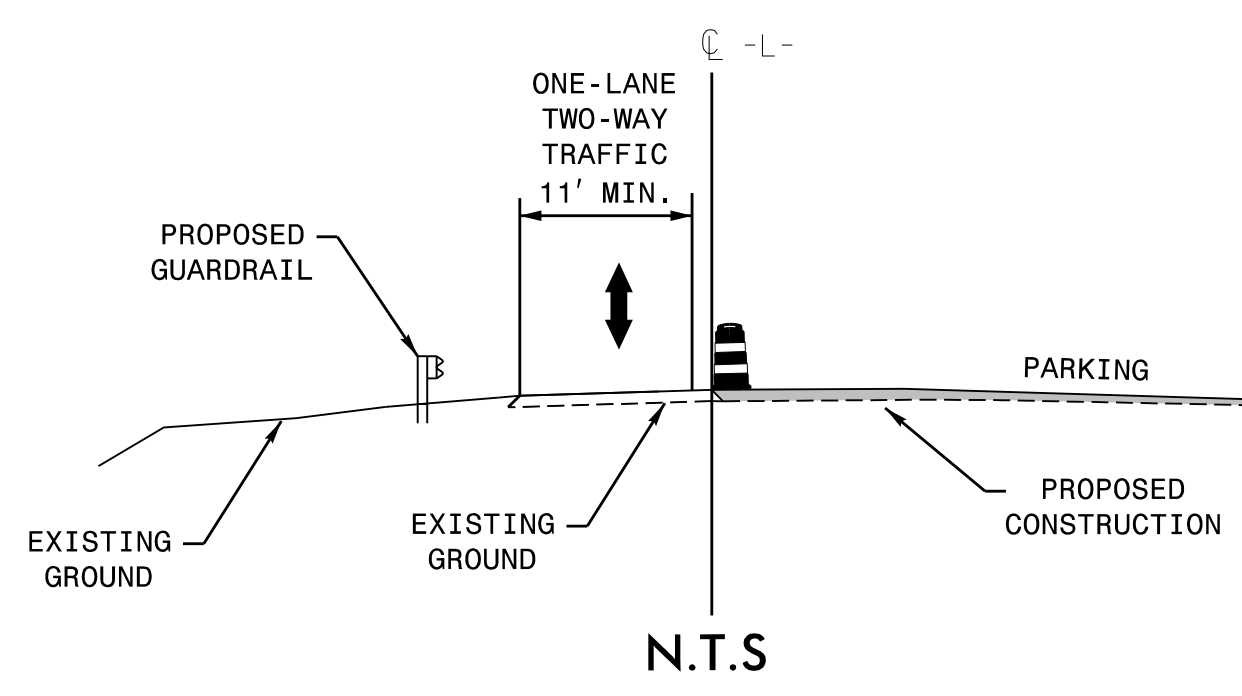
- TEMPORARY PAVEMENT MARKINGS:
- REMOVE 165 LF OF 4" WHITE EDGLINE (P1) (STEP 1, PHASE II)
 - PLACE 875 LF OF 4" WHITE EDGLINE (P1) AND 30 LF OF 4" 2 FT. -6 FT./SP WHITE MINISKIP (P5) (STEP 1, PHASE II)
 - REMOVE 20 LF OF 24" WHITE STOPBAR (P61), 85 LF OF 4" WHITE EDGLINE (P1), AND 30 LF OF 4" 2 FT. -6 FT./ SP WHITE MINISKIP (P5) (STEP 6, PHASE II)

NOTE: USE CMS BOARDS TO ALERT MOTORIST DURING BLASTING OPERATION OR AS NEEDED AS DIRECTED BY THE ENGINEER.



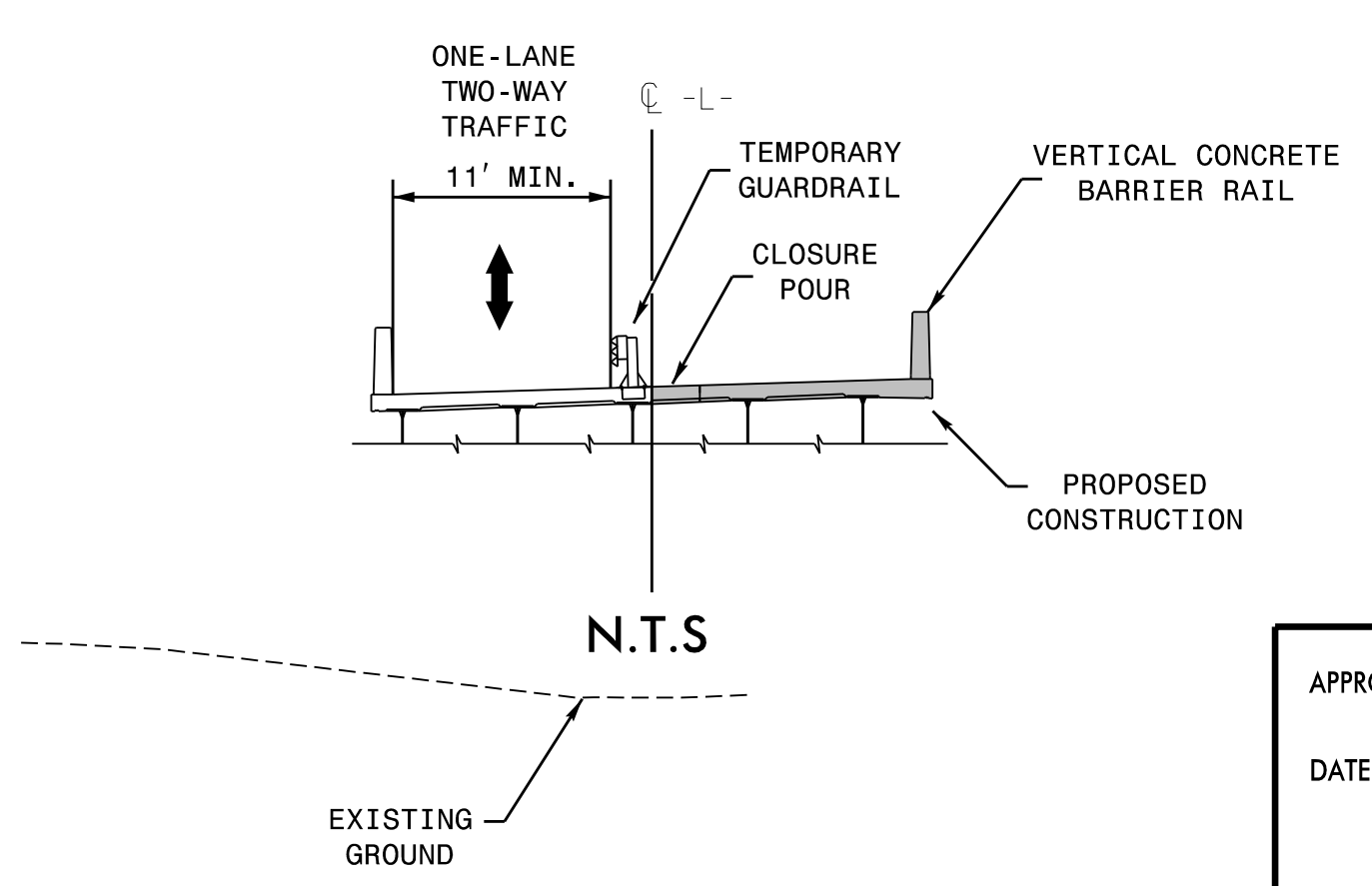
SECTION A-A

-L- STA 11+00



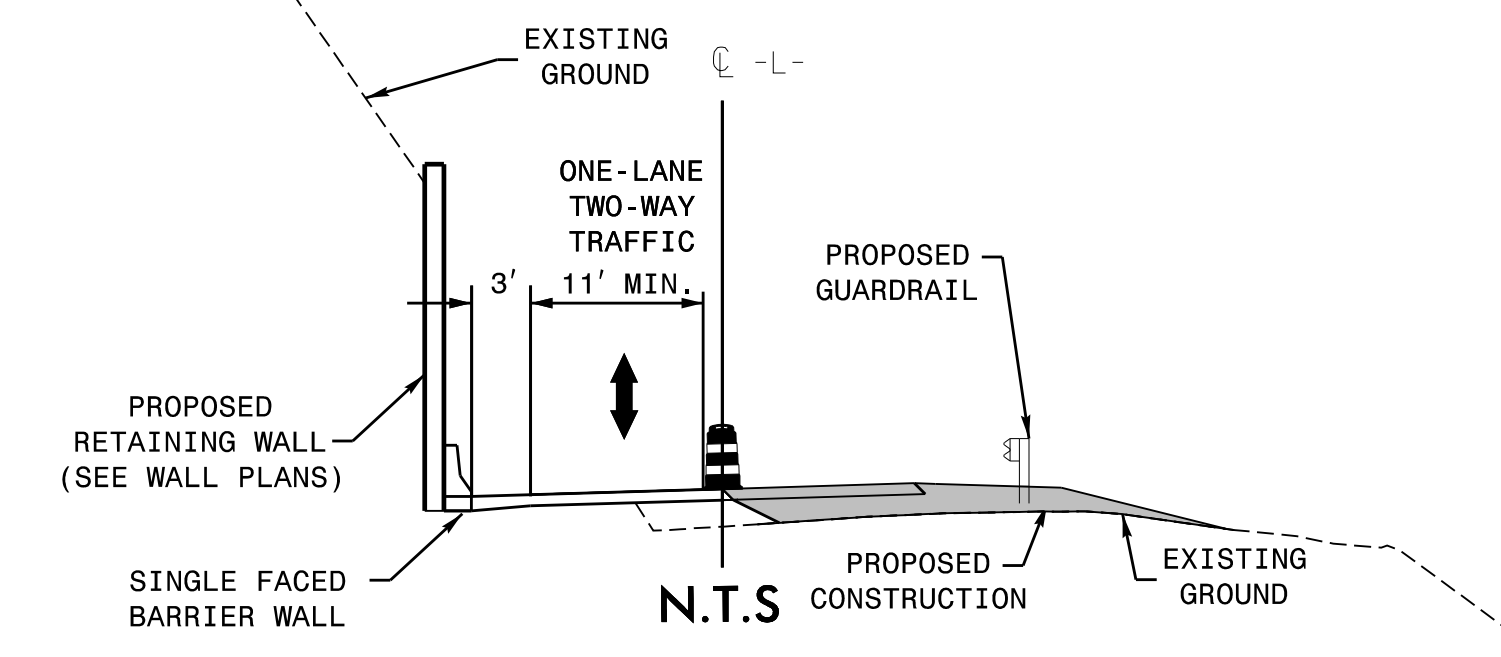
SECTION B-B

-L- STA 12+25



SECTION C-C

-L- STA 13+50

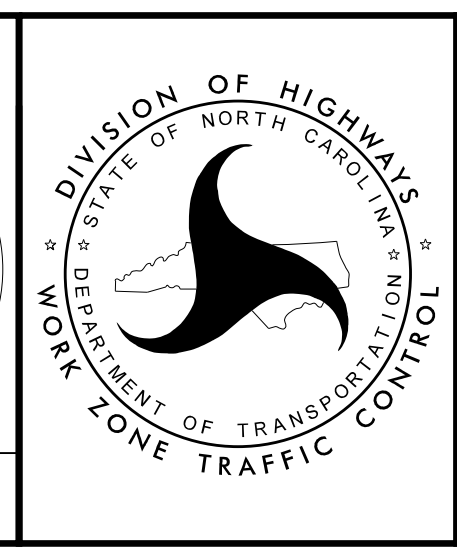


APPROVED: [Signature]

DATE: 12/15/2023

SEAL

DOCUMENT NOT CONSIDERED FINAL UNLESS ALL SIGNATURES COMPLETED



DIVISION OF HIGHWAYS
STATE OF NORTH CAROLINA
DEPARTMENT OF TRANSPORTATION
WORK ZONE TRAFFIC CONTROL

PHASE II

12/15/2023 10:37:31 AM V:\Asheville\Transportation\3236-08 WTC 14SP.20441.2 Haywood 174\Traffic\TrafficControl\CP\Haywood174_TC.tmp-4.dgn User:cmriddle