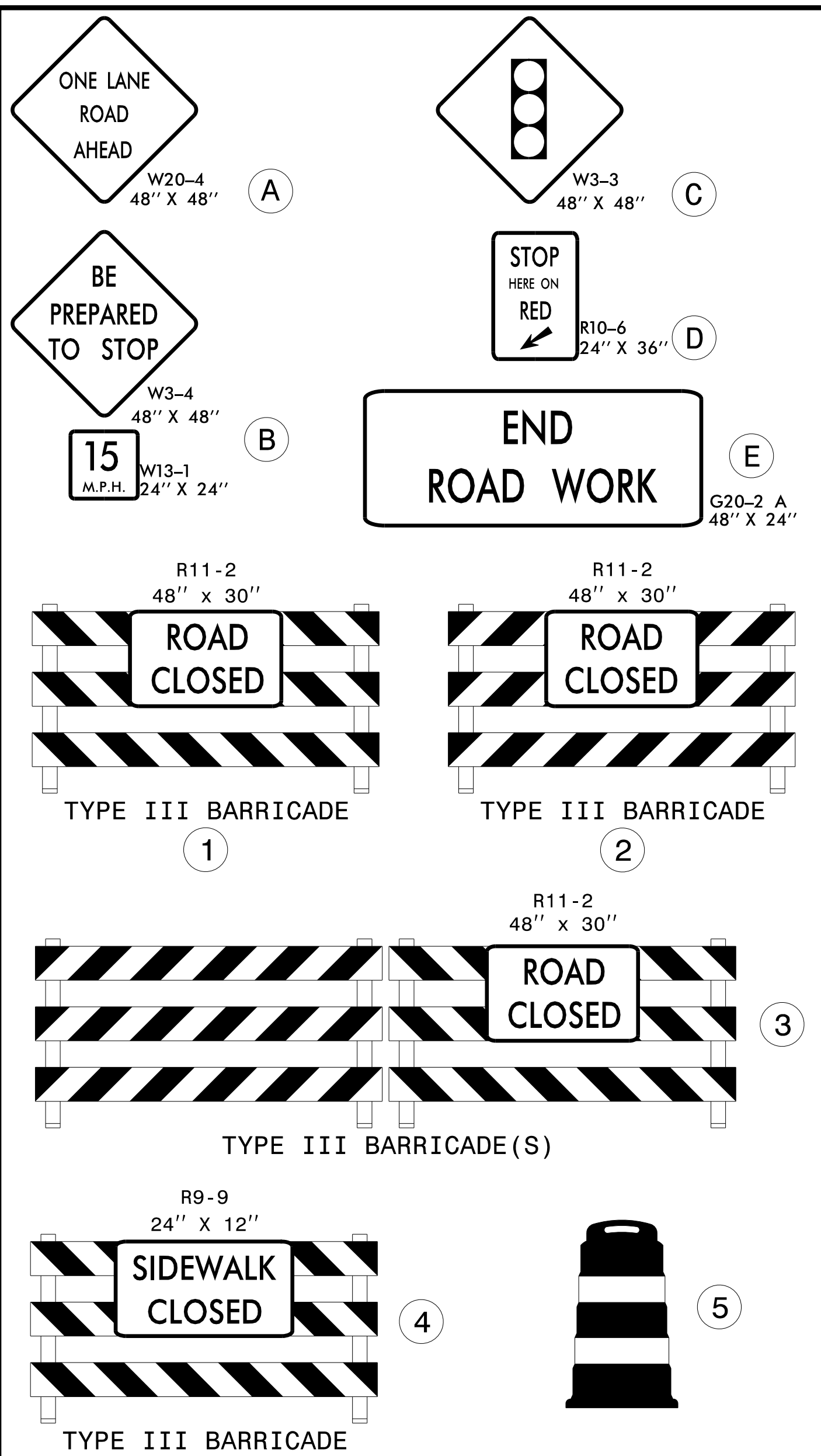


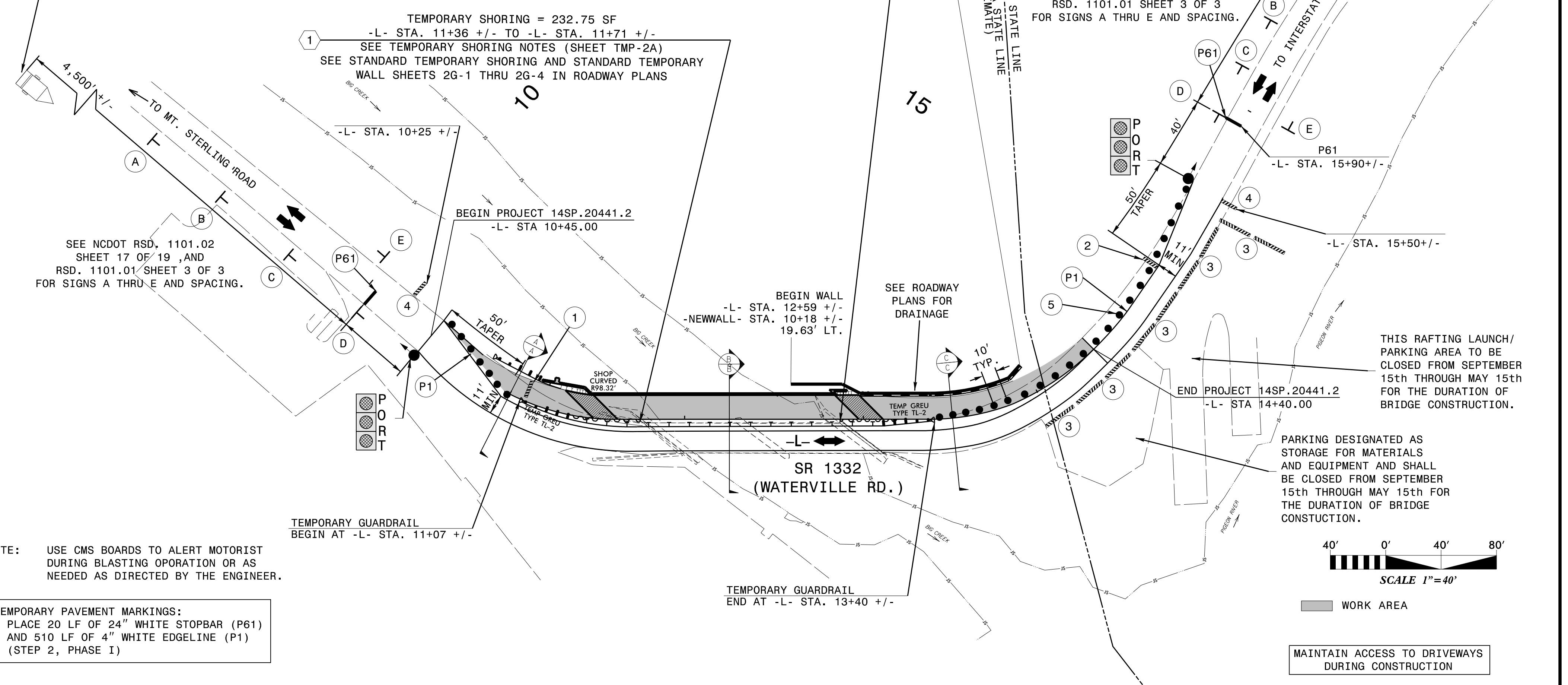
PROJ. REFERENCE NO.	SHEET NO.
14SP.20441.2	TMP-3



SET CMS BOARD ON SR 1332 (WATERVILLE RD.) JUST NORTH OF THE INTERSECTION OF SR 1332 AND SR 1397 (MT. STERLING RD.)

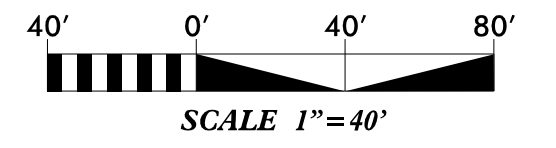
MESSAGE NO. 1	MESSAGE NO. 2
ROCK BLASTING AHEAD	3/4 MILE PREPARE TO STOP

CHANGEABLE MESSAGE SIGN



MESSAGE NO. 1	MESSAGE NO. 2
ROCK BLASTING AHEAD	1 MILE PREPARE TO STOP

CHANGEABLE MESSAGE SIGN

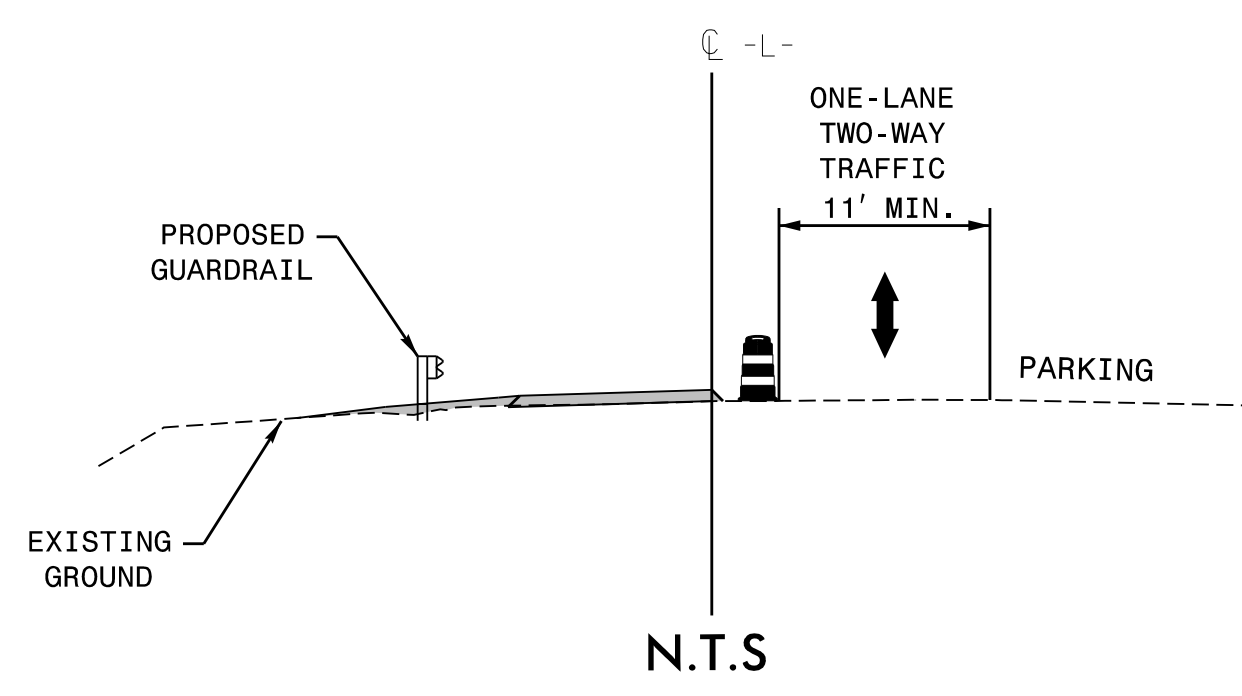


SCALE 1"=40'

MAINTAIN ACCESS TO DRIVEWAYS DURING CONSTRUCTION

### SECTION A-A

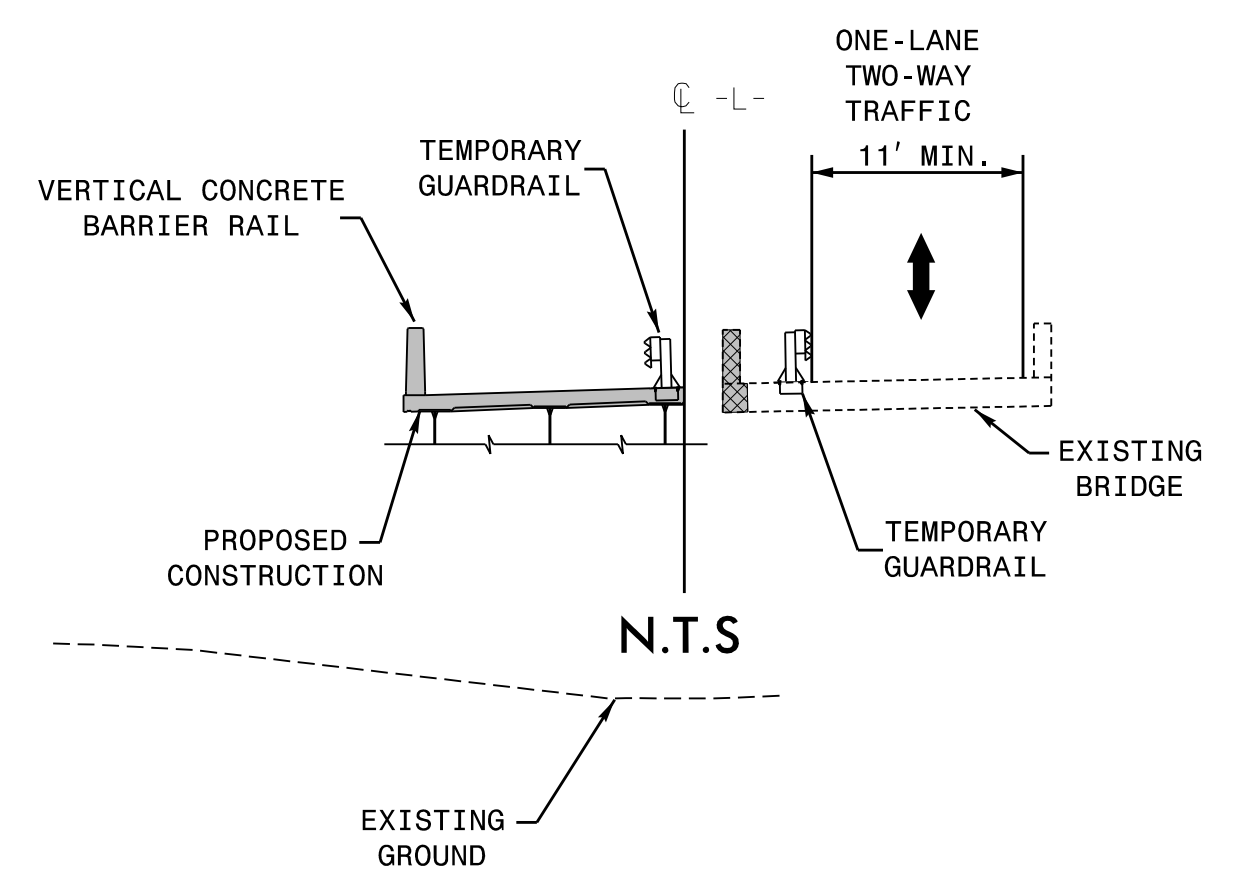
-L- STA 11+00



N.T.S

### SECTION B-B

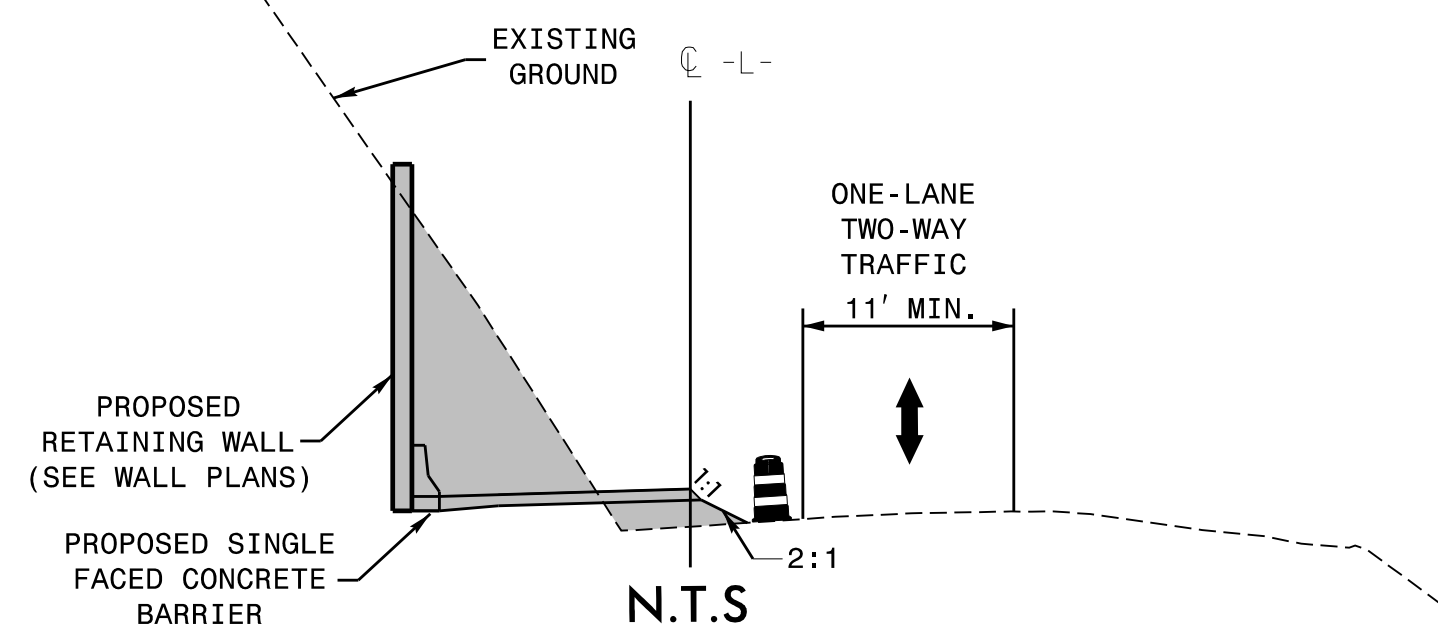
-L- STA 12+25



N.T.S

### SECTION C-C

-L- STA 13+50



N.T.S

APPROVED: [Signature]

DATE: 12/15/2023

SEAL

DOCUMENT NOT CONSIDERED FINAL UNLESS ALL SIGNATURES COMPLETED

DIVISION OF HIGHWAYS  
STATE OF NORTH CAROLINA  
DEPARTMENT OF TRANSPORTATION  
WORK ZONE TRAFFIC CONTROL

SEAL  
ENGINEER  
LOYD D. BROWN  
2019

# PHASE I

12/15/2023 10:42:11 AM V:\Asheville\Transportation\3236-08 WTC 14SP.20441.2 Haywood 174\Traffic\TrafficControl\CP\Haywood174\_TC\_tmp-3.dgn User:cmriddle