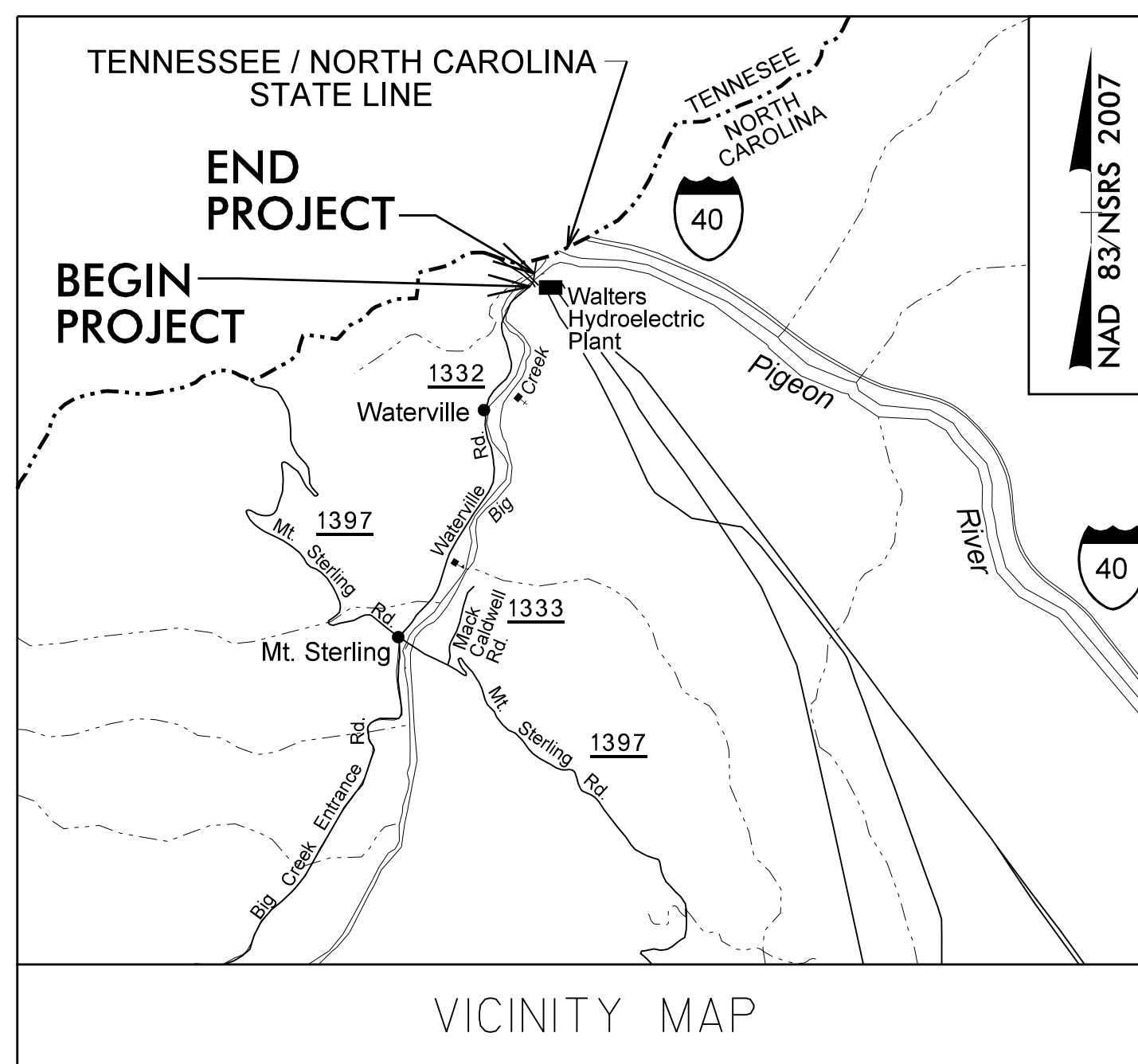
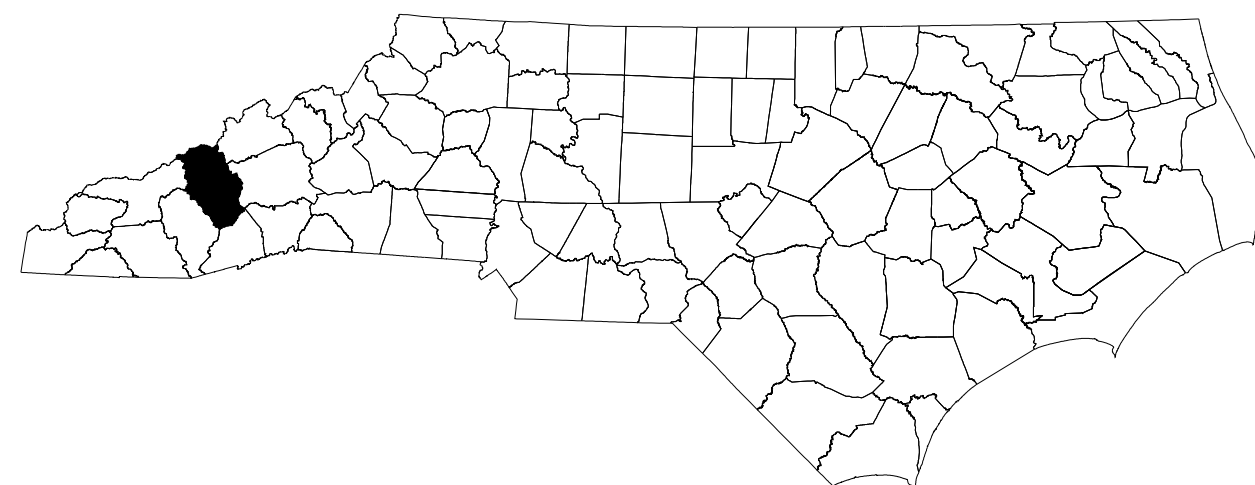


STATE OF NORTH CAROLINA
DIVISION OF HIGHWAYS

TRANSPORTATION MANAGEMENT PLAN

HAYWOOD COUNTY
DIVISION 14



LOCATION: BRIDGE NO. 430174 OVER BIG CREEK ON SR 1332 (WATERVILLE RD.)

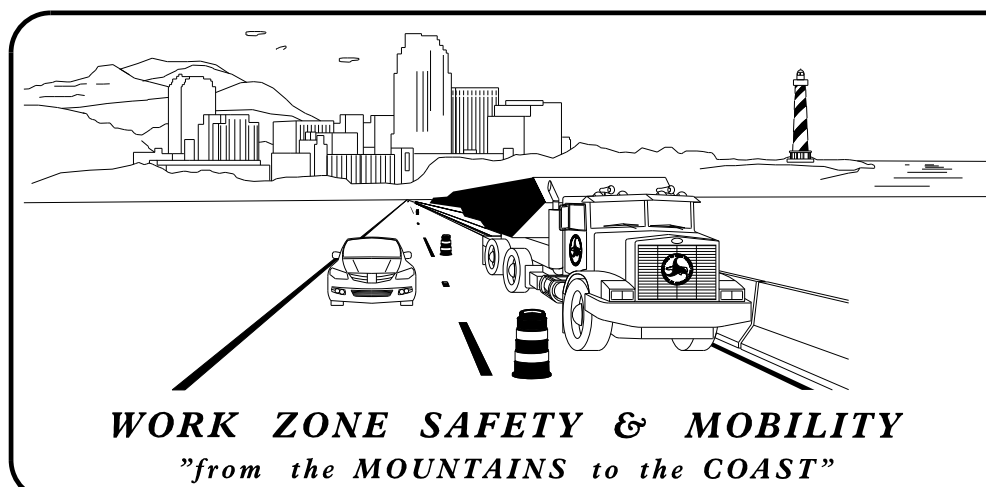
INDEX OF SHEETS

SHEET NO.	TITLE
TMP-1	TITLE SHEET, AND INDEX OF SHEETS
TMP-1A	LIST OF APPLICABLE ROADWAY STANDARD DRAWINGS, AND LEGEND
TMP-1B	TRANSPORTATION OPERATIONS PLAN: (MANAGEMENT STRATEGIES, GENERAL NOTES AND LOCAL NOTES)
TMP-2	TEMPORARY TRAFFIC CONTROL PHASING
TMP-2A	TEMPORARY SHORING NOTES
TMP-3	TEMPORARY TRAFFIC CONTROL PHASE I DETAIL
TMP-4	TEMPORARY TRAFFIC CONTROL PHASE II DETAIL
SIG-1	TEMPORARY PORTABLE TRAFFIC SIGNAL DESIGN

SHEET NO.
TMP-1

14SP.20441.2

**DOCUMENT NOT CONSIDERED FINAL
UNLESS ALL SIGNATURES COMPLETED**



PLANS PREPARED BY:

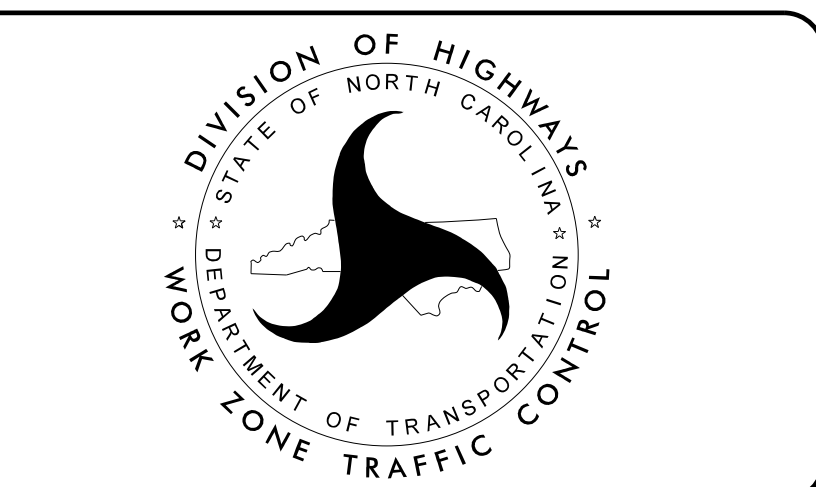
LLOYD DEWAYNE BROWN, PE, PLS
PROJECT ENGINEER

CHRISTIAN GONZALEZ-MARTELL
PROJECT DESIGN ENGINEER

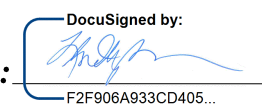
NCDOT CONTACTS:

ZACHARY CLARK, PE
WESTERN WZTC ENGINEER

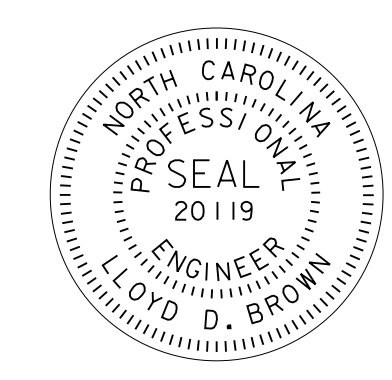
ZACHARY T. SHULER, PE
DIV. 14 BRIDGE PROGRAM MANAGER



JMT Prepared in the Office of:
JOHNSON, MIRMIRAN, & THOMPSON, INC.
1318 Patton Avenue, Suite F,
Asheville NC, 28806

APPROVED:  **SEAL**

DATE: 12/15/2023



PROJECT:

12/15/2023 10:37:10 AM V:\Asheville\Transportation\3236-08 MTC 14SP.20441.2 Haywood 174\TrafficControl\CP\haywood174_TC_tmp-1.dgn User:cmfiddle