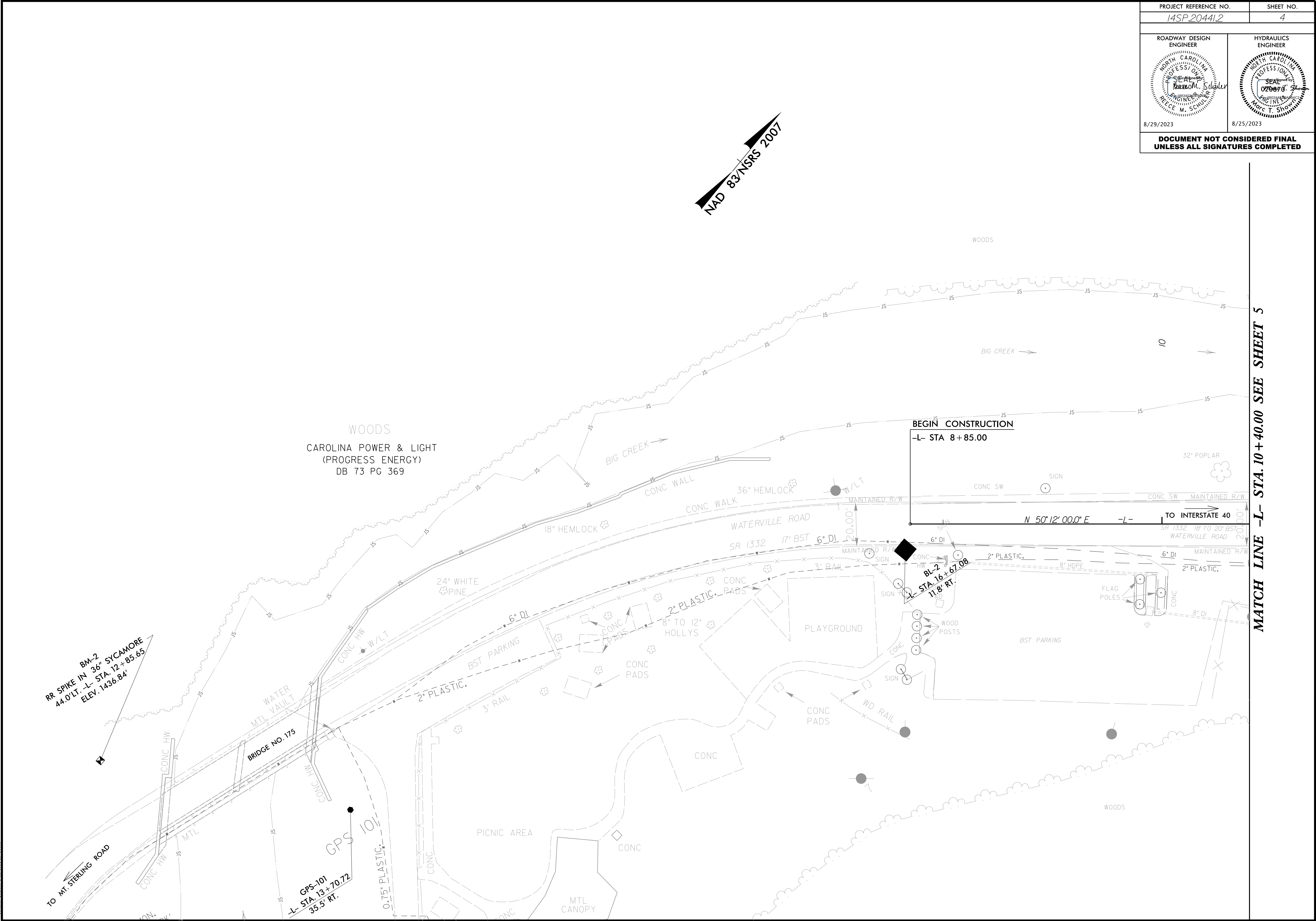
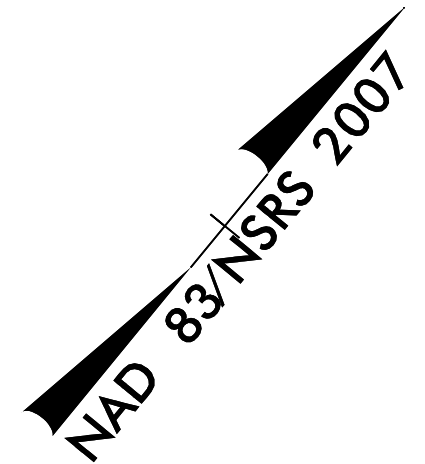


|  |  |  |  |
|--|--|--|--|
| PROJECT REFERENCE NO.<br>14SP.20441.2  |  | SHEET NO.<br>4   |  |
| ROADWAY DESIGN ENGINEER<br>NORTH CAROLINA PROFESSIONAL ENGINEERING BOARD<br>RECEIVED<br>8/29/2023<br>8/29/2023 |  | HYDRAULICS ENGINEER<br>NORTH CAROLINA PROFESSIONAL ENGINEERING BOARD<br>RECEIVED<br>8/25/2023<br>8/25/2023 |  |
| <b>DOCUMENT NOT CONSIDERED FINAL<br/>UNLESS ALL SIGNATURES COMPLETED</b>                                       |  |  |  |



MATCH LINE -L- STA. 10 + 40.00 SEE SHEET 5

BM-2  
RR SPIKE IN 36" SYCAMORE  
44.0' LT. -L- STA. 12 + 85.65  
ELEV. 1436.84'

GPS-101  
-L- STA. 13 + 70.72  
35.5' RT.

**BEGIN CONSTRUCTION**  
-L- STA 8+85.00

N 50° 12' 00.0" E -L-

TO INTERSTATE 40