

6/2/2019

PROJECT REFERENCE NO.	SHEET NO.
14SP.20441.2	1C-1
Location and Surveys	

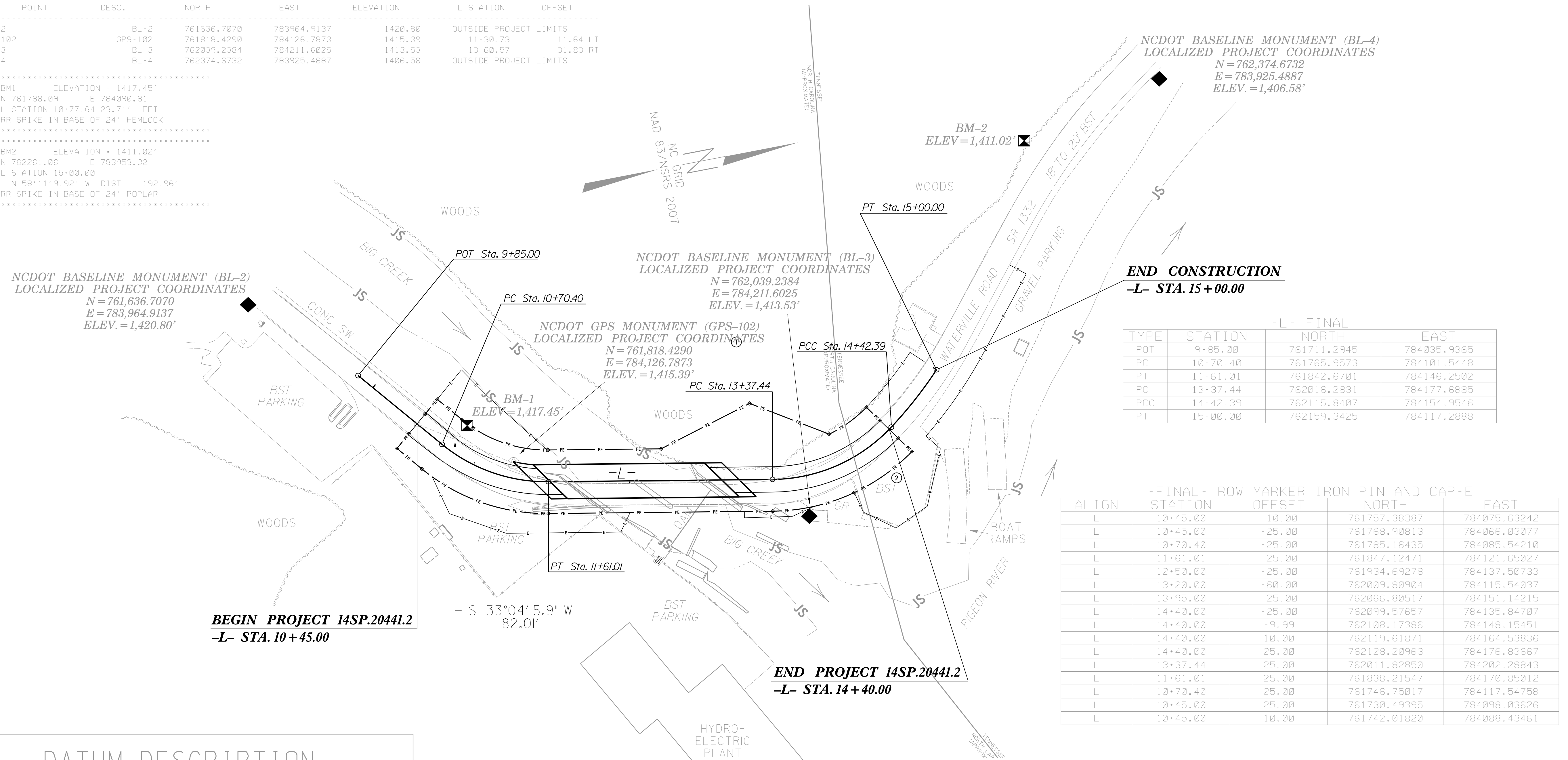
SURVEY CONTROL SHEET 43-0174

-FINAL-

BL	POINT	DESC.	NORTH	EAST	ELEVATION	L STATION	OFFSET
2	BL-2		761636.7070	783964.9137	1420.80	OUTSIDE PROJECT LIMITS	
102	GPS-102		761818.4290	784126.7873	1415.39	11+30.73	11.64 LT
3	BL-3		762039.2384	784211.6025	1413.53	13+60.57	31.83 RT
4	BL-4		762374.6732	783925.4887	1406.58	OUTSIDE PROJECT LIMITS	

.....
 BM1 ELEVATION = 1417.45'
 N 761788.09 E 784090.81
 L STATION 10+77.64 23.71' LEFT
 RR SPIKE IN BASE OF 24' HEMLOCK

 BM2 ELEVATION = 1411.02'
 N 762261.06 E 783953.32
 L STATION 15+00.00
 N 58°11'9.92" W DIST 192.96'
 RR SPIKE IN BASE OF 24' POPLAR



END CONSTRUCTION
-L- STA. 15+00.00

-L- FINAL

TYPE	STATION	NORTH	EAST
POT	9+85.00	761711.2945	784035.9365
PC	10+70.40	761765.9573	784101.5448
PT	11+61.01	761842.6701	784146.2502
PC	13+37.44	762016.2831	784177.6885
PCC	14+42.39	762115.8407	784154.9546
PT	15+00.00	762159.3425	784117.2888

-FINAL- ROW MARKER IRON PIN AND CAP-E

ALIGN	STATION	OFFSET	NORTH	EAST
L	10+45.00	-10.00	761757.38387	784075.63242
L	10+45.00	-25.00	761768.90813	784066.03077
L	10+70.40	-25.00	761785.16435	784085.54210
L	11+61.01	-25.00	761847.12471	784121.65027
L	12+50.00	-25.00	761934.69278	784137.50733
L	13+20.00	-60.00	762009.80904	784115.54037
L	13+95.00	-25.00	762066.80517	784151.14215
L	14+40.00	-25.00	762099.57657	784135.84707
L	14+40.00	-9.99	762108.17386	784148.15451
L	14+40.00	10.00	762119.61871	784164.53836
L	14+40.00	25.00	762128.20963	784176.83667
L	13+37.44	25.00	762011.82850	784202.28843
L	11+61.01	25.00	761838.21547	784170.85012
L	10+70.40	25.00	761746.75017	784117.54758
L	10+45.00	25.00	761730.49395	784098.03626
L	10+45.00	10.00	761742.01820	784088.43461

BEGIN PROJECT 14SP.20441.2
-L- STA. 10+45.00

END PROJECT 14SP.20441.2
-L- STA. 14+40.00

DATUM DESCRIPTION

THE LOCALIZED COORDINATE SYSTEM DEVELOPED FOR THIS PROJECT IS BASED ON THE STATE PLANE COORDINATES ESTABLISHED BY NCDOT FOR MONUMENT "GPS-102" WITH NAD 83/NSRS 2007 STATE PLANE GRID COORDINATES OF NORTHING: 761818.4290(++) EASTING: 784126.7873(++) ELEVATION: 1415.39(++)

THE AVERAGE COMBINED GRID FACTOR USED ON THIS PROJECT (GROUND TO GRID) IS: 0.999850581

THE N.C. LAMBERT GRID BEARING AND LOCALIZED HORIZONTAL GROUND DISTANCE FROM "GPS-102" TO -L- STATION 10+45.00 IS
 S 33° 04' 15.9" W 82.01'

ALL LINEAR DIMENSIONS ARE LOCALIZED HORIZONTAL DISTANCES
 VERTICAL DATUM USED IS NAVD 88

GEOID MODEL - G09NC
 NOTE: DRAWING NOT TO SCALE

NOTES:

- THE CONTROL DATA FOR THIS PROJECT CAN BE FOUND ELECTRONICALLY BY SELECTING PROJECT CONTROL DATA AT:
[HTTPS://CONNECT.NCDOT.GOV/RESOURCES/LOCATION/](https://connect.ncdot.gov/resources/location/)
 THE FILES TO BE FOUND ARE AS FOLLOWS:
 430174_LS_CONTROL.TXT
- SITE CALIBRATION INFORMATION HAS NOT BEEN PROVIDED FOR THIS PROJECT. IF FURTHER CONTROL INFORMATION IS NEEDED, PLEASE CONTACT THE LOCATION AND SURVEYS UNIT.
- ⊙ INDICATES GEODETIC CONTROL MONUMENTS USED OR SET FOR HORIZONTAL PROJECT BY THE NCDOT LOCATION AND SURVEYS UNIT. PROJECT CONTROL ESTABLISHED USING GLOBAL POSITIONING SYSTEM.

1/30/2019 10:48:39 PM
 \\s01c01\proj\14sp20441\14sp20441_1s-1.dgn