

# SURVEY CONTROL SHEET 43-0175

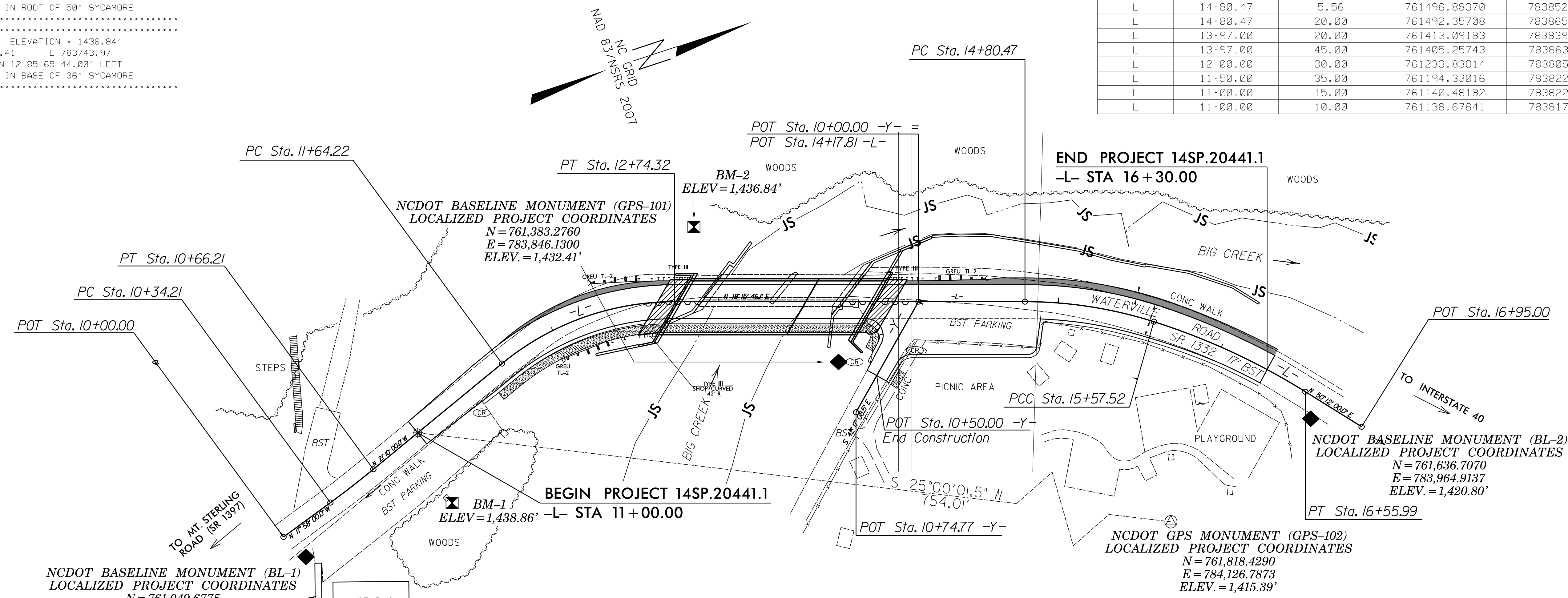
## -FINAL-

BL POINT	DESC.	NORTH	EAST	ELEVATION	L STATION	OFFSET
1	BL-1	761049.6775	783856.8361	1440.50	10+03.68	17.22 RT
101	GPS-101	761383.2760	783846.1300	1432.41	13+70.72	35.51 RT
2	BL-2	761636.7070	783964.9137	1420.80	16+67.08	11.84 RT

.....  
 BM1 ELEVATION = 1438.86'  
 N 761141.38 E 783853.67  
 L STATION 10+89.44 44.75' RIGHT  
 RR SPIKE IN ROOT OF 50' SYCAMORE  
 .....  
 BM2 ELEVATION = 1436.84'  
 N 761327.41 E 783743.97  
 L STATION 12+85.65 44.00' LEFT  
 RR SPIKE IN BASE OF 36' SYCAMORE  
 .....

-FINAL- ROW MARKER IRON PIN AND CAP-E

ALIGN	STATION	OFFSET	NORTH	EAST
L	11+00.00	-10.00	761131.45476	783798.79820
L	11+00.00	-15.00	761129.64935	783794.13553
L	12+00.00	-45.00	761222.94381	783731.31626
L	12+74.32	-45.00	761316.96737	783739.46923
L	14+80.47	-45.00	761512.72681	783804.06951
L	15+57.52	-25.00	761581.61550	783861.50962
L	16+30.00	-20.00	761635.91778	783915.62408
L	16+30.00	-10.00	761628.67224	783922.51626
L	14+80.47	5.56	761496.88370	783852.07891
L	14+80.47	20.00	761492.35708	783865.79531
L	13+97.00	20.00	761413.09183	783839.63791
L	13+97.00	45.00	761405.25743	783863.37864
L	12+00.00	30.00	761233.83814	783805.52080
L	11+50.00	35.00	761194.33016	783822.70813
L	11+00.00	15.00	761140.48182	783822.11155
L	11+00.00	10.00	761138.67641	783817.44888



NCDOT BASELINE MONUMENT (BL-1)  
 LOCALIZED PROJECT COORDINATES  
 N = 761,049.6775  
 E = 783,856.8361  
 ELEV. = 1,440.50'

BEGIN PROJECT 14SP.20441.1  
 -L- STA 11+00.00

END PROJECT 14SP.20441.1  
 -L- STA 16+30.00

NCDOT BASELINE MONUMENT (BL-2)  
 LOCALIZED PROJECT COORDINATES  
 N = 761,636.7070  
 E = 783,964.9137  
 ELEV. = 1,420.80'

NCDOT GPS MONUMENT (GPS-102)  
 LOCALIZED PROJECT COORDINATES  
 N = 761,818.4290  
 E = 784,126.7873  
 ELEV. = 1,415.39'

-L- FINAL

TYPE	STATION	NORTH	EAST
POT	10+00.00	761040.8653	783841.5926
PC	10+34.21	761073.4065	783831.0403
PT	10+66.21	761103.5547	783820.3247
PC	11+64.22	761194.9485	783784.9366
PT	12+74.32	761302.8618	783782.2013
PC	14+80.47	761498.6213	783846.8016
PCC	15+57.52	761566.9484	783881.7550
PT	16+55.99	761638.7060	783948.8132
POT	16+95.00	761663.6782	783978.7857

-Y- FINAL

TYPE	STATION	NORTH	EAST
POT	10+00.00	761439.1172	783827.1654
POT	10+74.77	761383.7990	783877.4758

PDE  
 -FINAL- ROW MARKER PERMANENT EASEMENT-E

ALIGN	STATION	OFFSET	NORTH	EAST
L	16+20.00	-19.85	761628.47674	783908.20878
L	16+20.00	-45.00	761646.25326	783890.42095
L	16+30.00	-45.00	761654.03164	783898.39364
L	16+30.00	-20.00	761635.91778	783915.62408

### DATUM DESCRIPTION

THE LOCALIZED COORDINATE SYSTEM DEVELOPED FOR THIS PROJECT IS BASED ON THE STATE PLANE COORDINATES ESTABLISHED BY NCDOT FOR MONUMENT "GPS-102" WITH NAD 83/NSRS 2007 STATE PLANE GRID COORDINATES OF NORTHING: 761818.4290(±) EASTING: 784126.7873(±) ELEVATION: 1415.39(±)

THE AVERAGE COMBINED GRID FACTOR USED ON THIS PROJECT (GROUND TO GRID) IS: 0.999850581

THE N.C. LAMBERT GRID BEARING AND LOCALIZED HORIZONTAL GROUND DISTANCE FROM "GPS-102" TO -L- STATION 11+00.00 IS  
 S 25° 00' 01.5" W 754.01'

ALL LINEAR DIMENSIONS ARE LOCALIZED HORIZONTAL DISTANCES  
 VERTICAL DATUM USED IS NAVD 88

**NOTES:**

- THE CONTROL DATA FOR THIS PROJECT CAN BE FOUND ELECTRONICALLY BY SELECTING PROJECT CONTROL DATA AT:  
[HTTPS://CONNECT.NCDOT.GOV/RESOURCES/LOCATION/](https://connect.ncdot.gov/resources/location/)  
 THE FILES TO BE FOUND ARE AS FOLLOWS:  
 430175\_LS\_CONTROL.TXT
- SITE CALIBRATION INFORMATION HAS NOT BEEN PROVIDED FOR THIS PROJECT. IF FURTHER CONTROL INFORMATION IS NEEDED, PLEASE CONTACT THE LOCATION AND SURVEYS UNIT.
- ⊙ INDICATES GEODETIC CONTROL MONUMENTS USED OR SET FOR HORIZONTAL PROJECT BY THE NCDOT LOCATION AND SURVEYS UNIT.  
 PROJECT CONTROL ESTABLISHED USING GLOBAL POSITIONING SYSTEM.

GEOID MODEL - G09NC  
 NOTE: DRAWING NOT TO SCALE

10/24/2023 4:26:50 PM  
 \$\$\$\$\$\$DCN\$\$\$\$\$  
 cawilliams