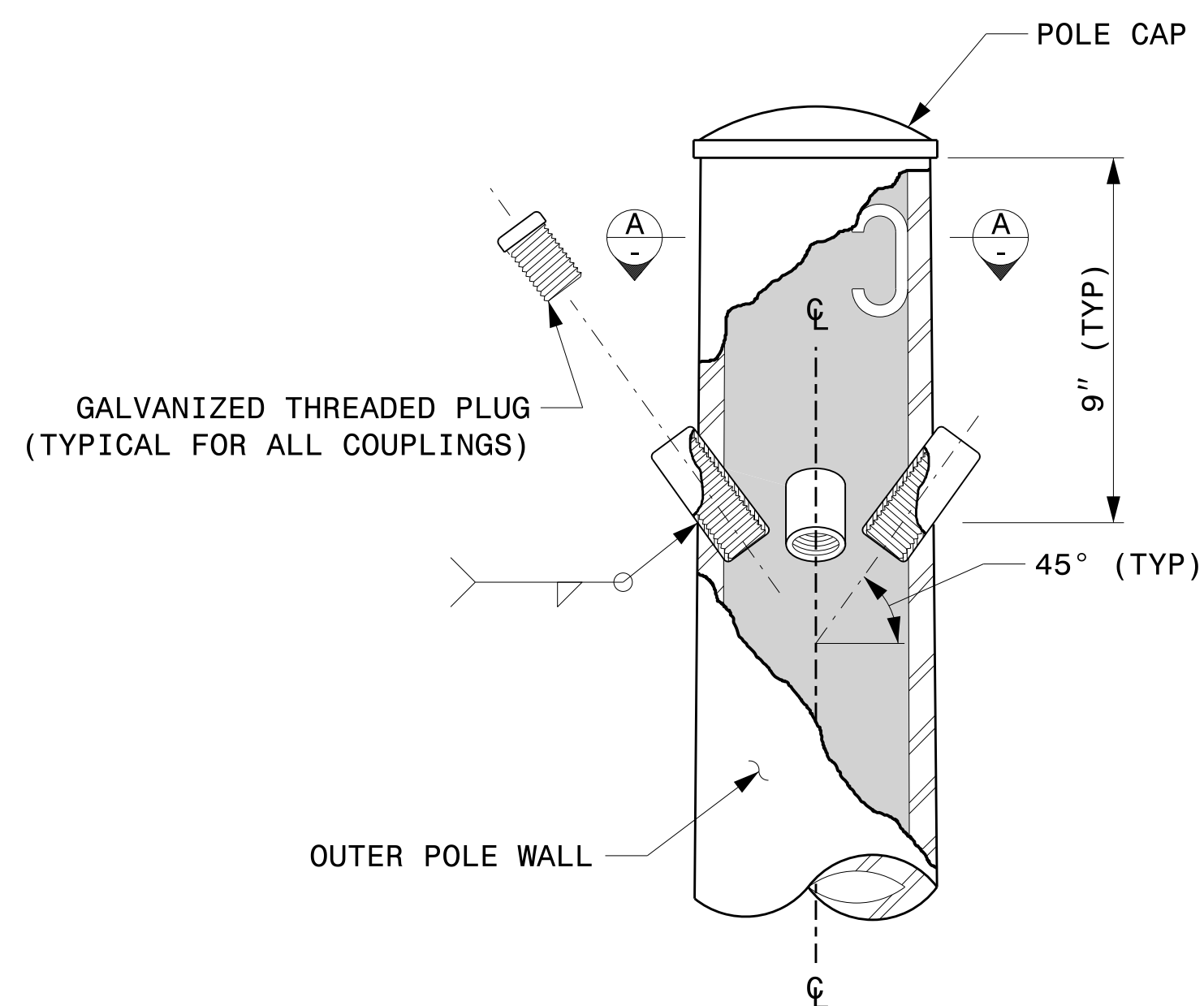
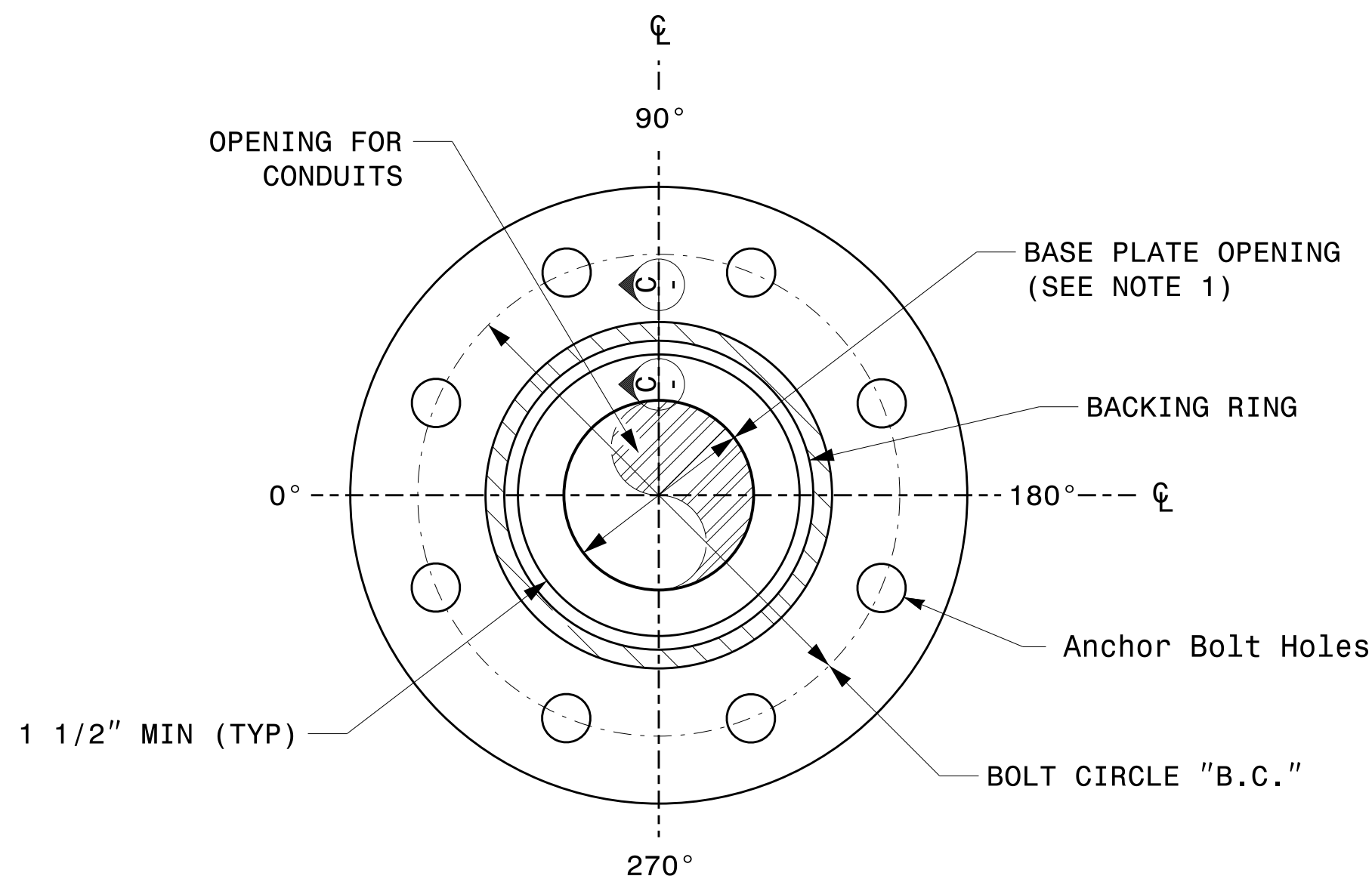


NOTE:

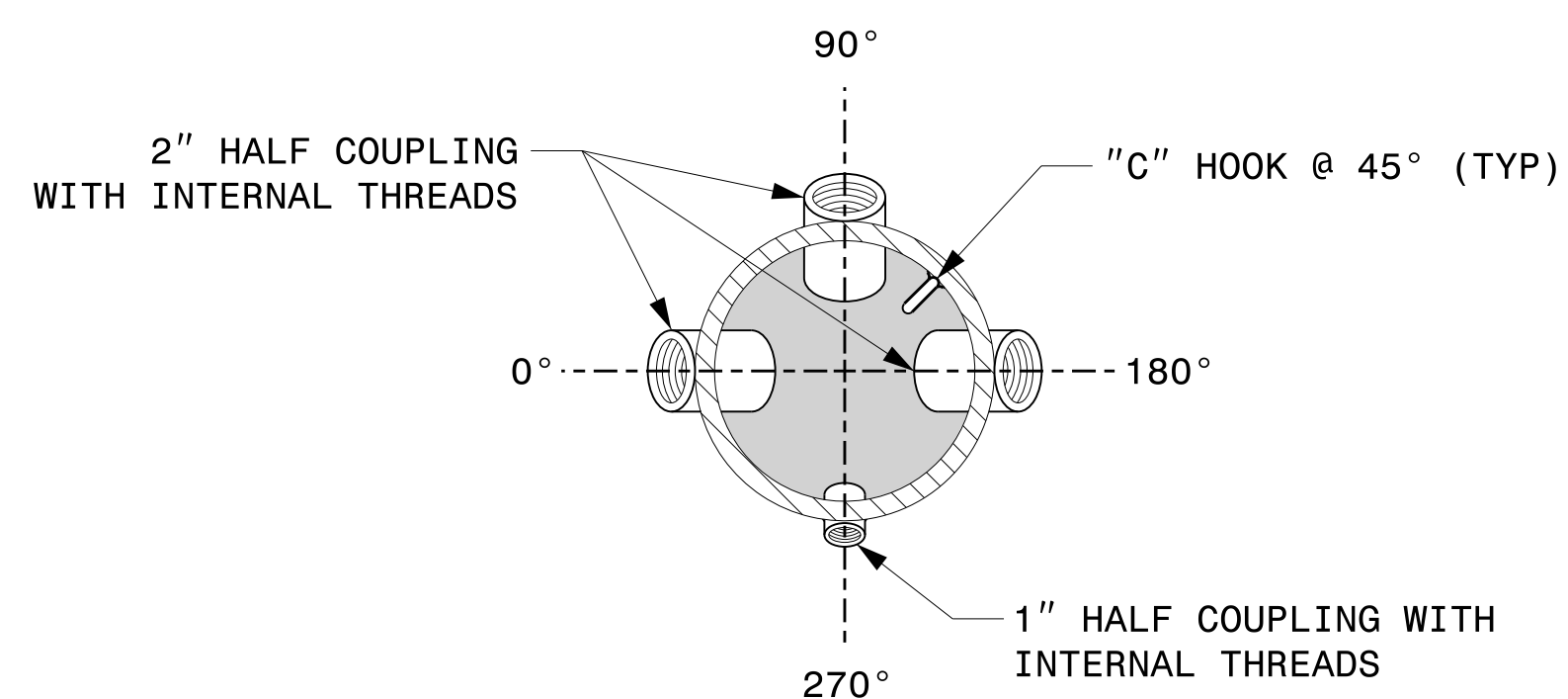
- 1. OPENING IN POLE BASE PLATE SHALL BE EQUAL TO POLE BASE INSIDE DIAMETER MINUS  $3\frac{1}{2}$ " BUT SHALL NOT BE LESS THAN  $8\frac{1}{2}$ ".



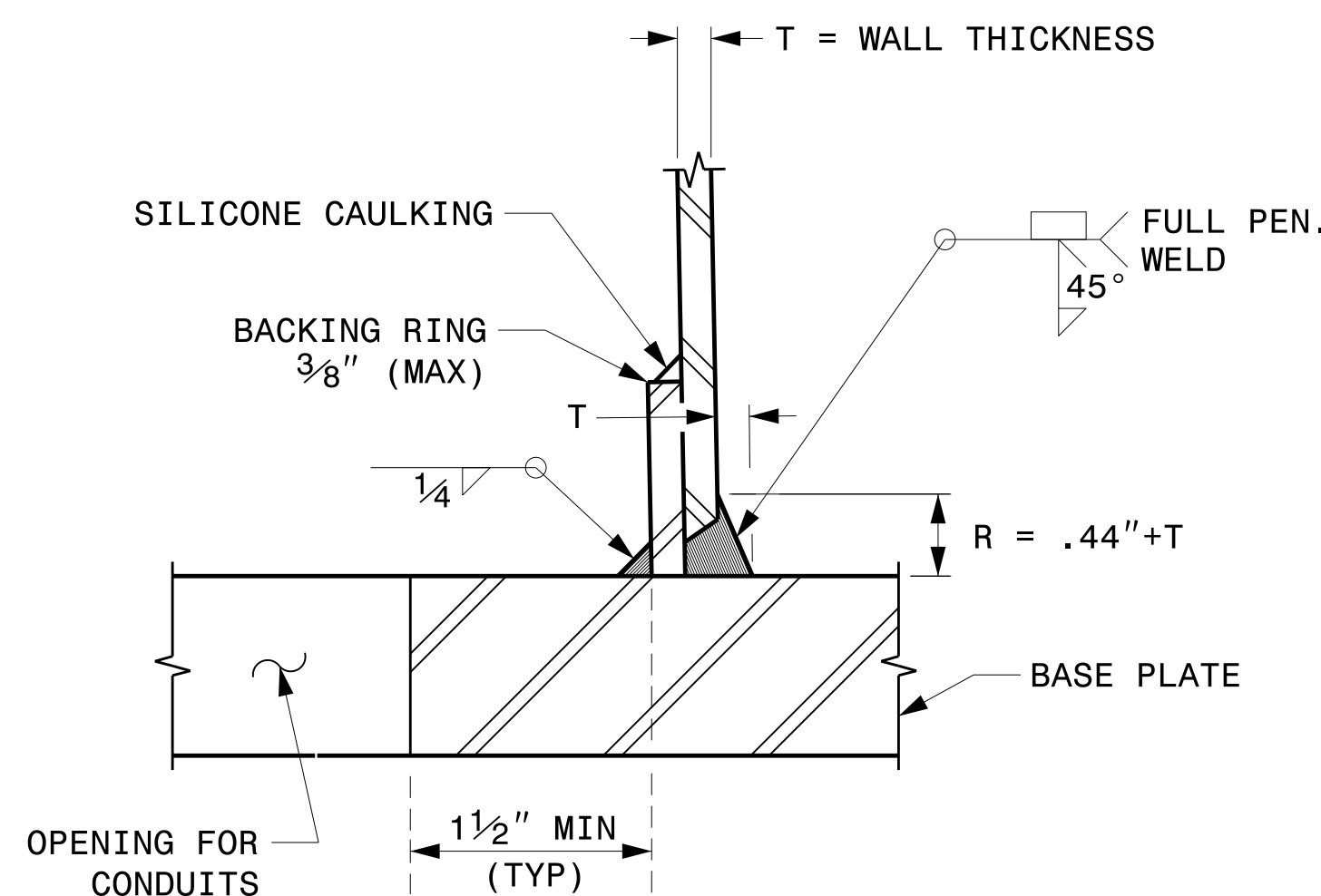
CABLE ENTRANCES AT TOP OF POLE



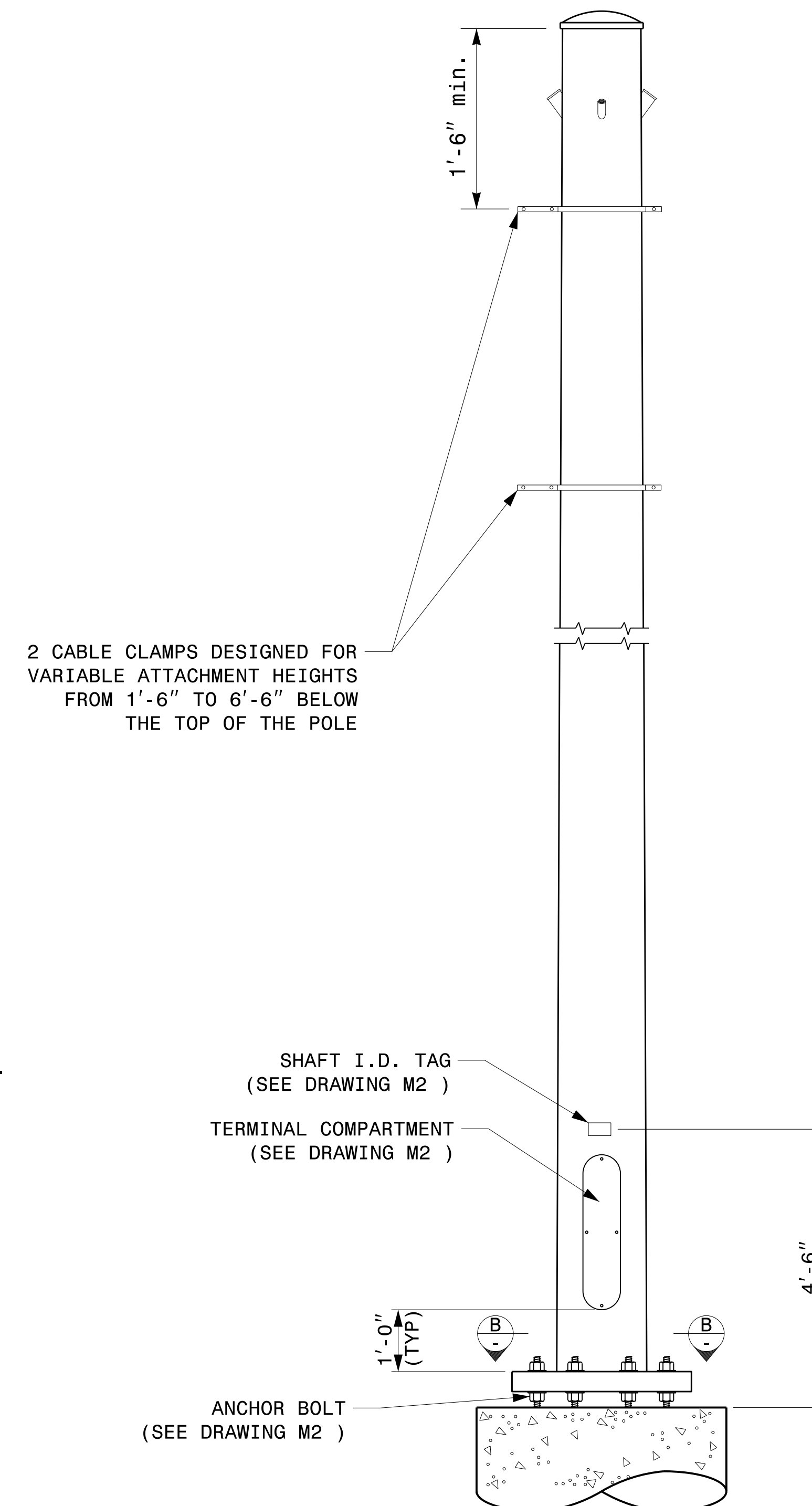
SECTION B-B  
POLE BASE PLATE DETAILS  
(8 AND 12 BOLT PATTERN)



SECTION A-A  
RADIAL ORIENTATION OF FACTORY INSTALLED  
ACCESSORIES AT TOP OF POLE



SECTION C-C  
(POLE ATTACHMENT TO BASE PLATE)  
FULL-PENETRATION  
GROOVE WELD DETAIL



2 CABLE CLAMPS DESIGNED FOR  
VARIABLE ATTACHMENT HEIGHTS  
FROM 1'-6" TO 6'-6" BELOW  
THE TOP OF THE POLE

MONOTUBE STRAIN POLE

08-dpt-2023 10:37  
S:\ISSUES\15 Signal\Signal Design\Section\Structures\Drawings\2024 Merlot Pole Std Drawings for LRF\02024 Sig.M3 Str. Fabrication Details-Strain Poles.dgn  
Kedar Tagon

Prepared in the Offices of:

SCALE: 0 NA NONE

Typical Fabrication Details For Strain Poles	
PLAN DATE: SEPTEMBER 2023	DESIGNED BY: K.C. DURIGON
PREPARED BY: K.C. DURIGON	REVIEWED BY: D.C. SARKAR
REVISIONS	INIT. DATE

SEAL

DocuSigned by:  
**Kevin Durigon**  
4B23DC79B3784DA

09/23/2023  
DATE

Fabrication Details – Strain Poles