

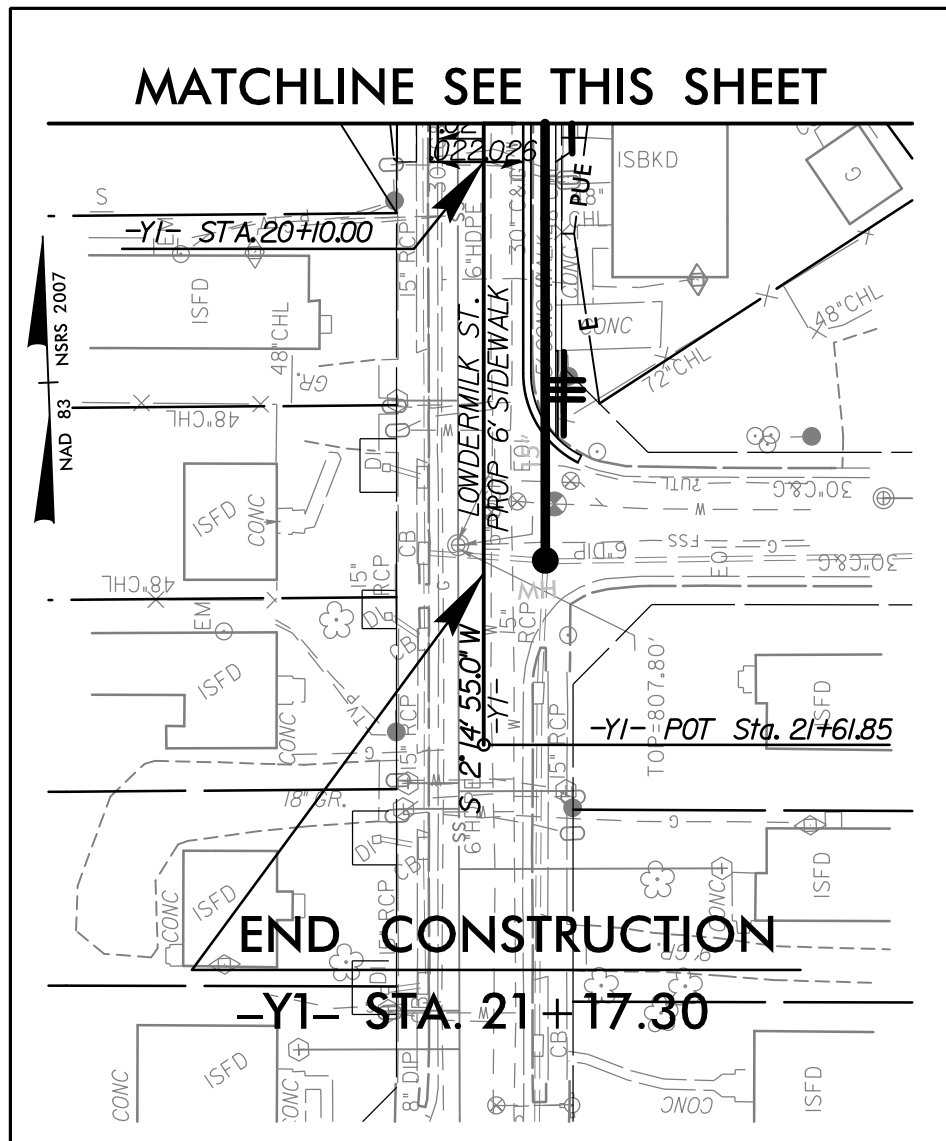
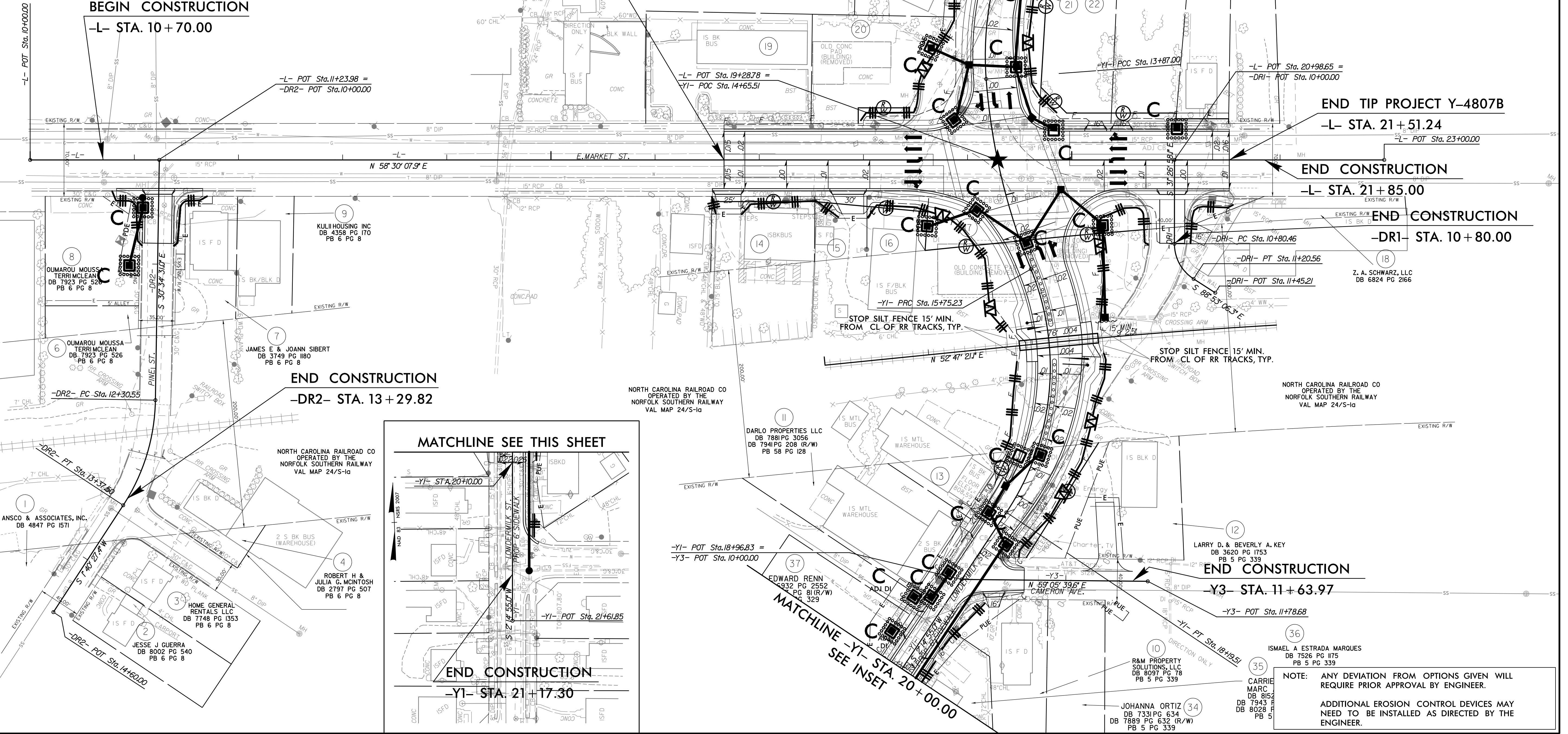
FINAL EROSION CONTROL FOR CONSTRUCTION SHEET 4

NOTE:
UTILIZE FABRIC INSERT INLET PROTECTION IN LIEU OF ROCK INLET SEDIMENT TRAP TYPE C IN AREAS WHERE WATER MAY POND ON ROADS OPEN TO TRAFFIC OR AS DIRECTED.

NOTE:
USE MATTING FOR EROSION CONTROL WITH PERMANENT SEEDING ON SLOPES 4:1 OR STEEPER.

PROJECT REFERENCE NO. Y-4807B	SHEET NO. EC-5/CONST.-4
RW SHEET NO.	
STV STV Engineers, Inc. 900 West Trade St., Suite 715 Charlotte, NC 28202 NC License Number F-0991	

-Y1- CURVE DATA			-DRI- CURVE DATA			-DR2- CURVE DATA		
PI Sta 13+11.00	PI Sta 14+81.89	PI Sta 17+08.11	PI Sta 11+02.37	PI Sta 12+85.48		PI Sta 12+85.48		
$\Delta = 29^{\circ} 40' 23.3" (LT)$	$\Delta = 17^{\circ} 58' 27.7" (LT)$	$\Delta = 55^{\circ} 59' 05.7" (RT)$	$\Delta = 57^{\circ} 26' 08.1" (LT)$	$\Delta = 32^{\circ} 14' 58.4" (RT)$		$\Delta = 32^{\circ} 14' 58.4" (RT)$		
$D = 19^{\circ} 05' 54.9"$	$D = 9^{\circ} 32' 57.5"$	$D = 22^{\circ} 55' 05.9"$	$D = 143^{\circ} 14' 22.0"$	$D = 30^{\circ} 09' 20.4"$		$D = 30^{\circ} 09' 20.4"$		
$L = 155.37'$	$L = 188.23'$	$L = 244.28'$	$L = 40.10'$	$L = 106.94'$		$L = 106.94'$		
$T = 79.47'$	$T = 94.63'$	$T = 132.89'$	$T = 21.92'$	$T = 54.93'$		$T = 54.93'$		
$R = 300.00'$	$R = 600.00'$	$R = 250.00'$	$R = 40.00'$	$R = 190.00'$		$R = 190.00'$		
$e = 2.0\%$	$e = NC$	$e = 4.0\%$						
$RUNOFF = 60'$	$RUNOFF = N/A$	$RUNOFF = 120'$						



3/5/2024
R:\Roadway\Prj\EC\Y4807B_ec_psn05_final.dgn
mbdelaziz

NOTE:
ANY DEVIATION FROM OPTIONS GIVEN WILL REQUIRE PRIOR APPROVAL BY ENGINEER.

ADDITIONAL EROSION CONTROL DEVICES MAY NEED TO BE INSTALLED AS DIRECTED BY THE ENGINEER.