

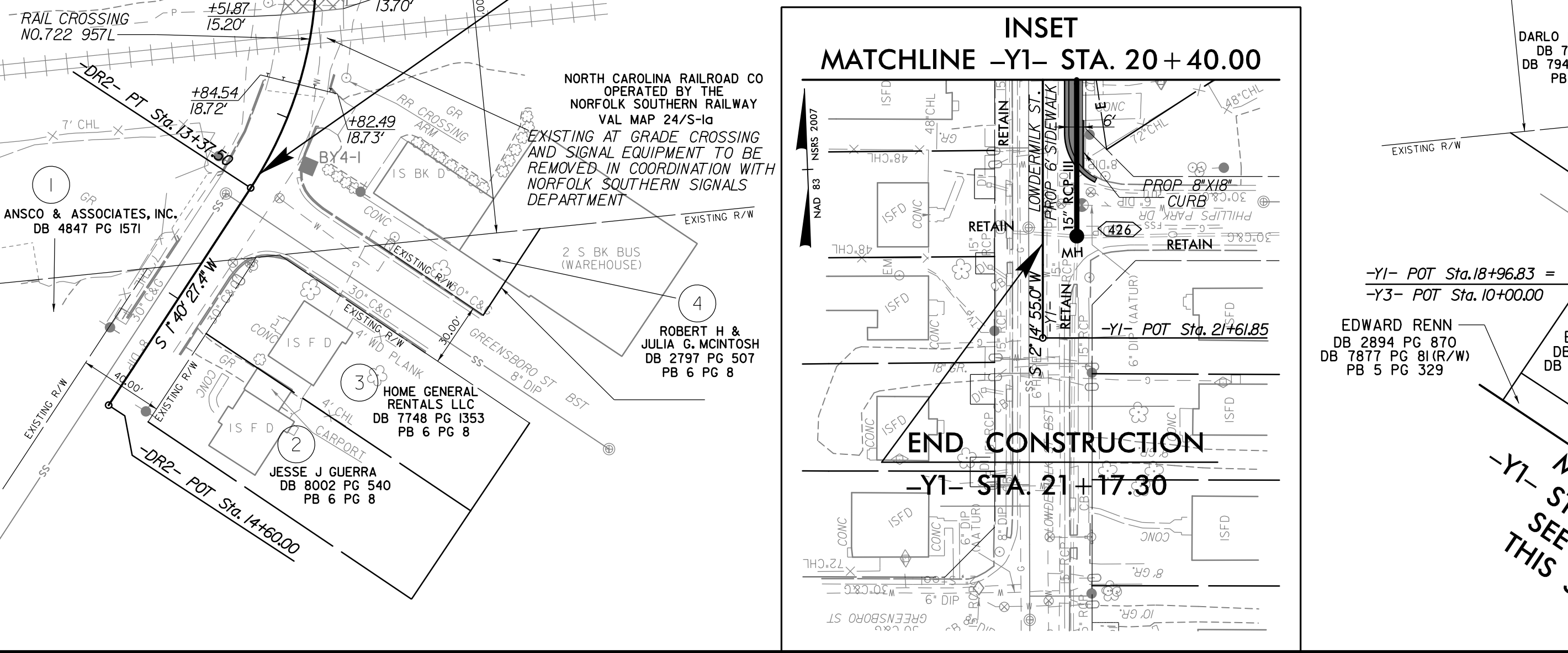
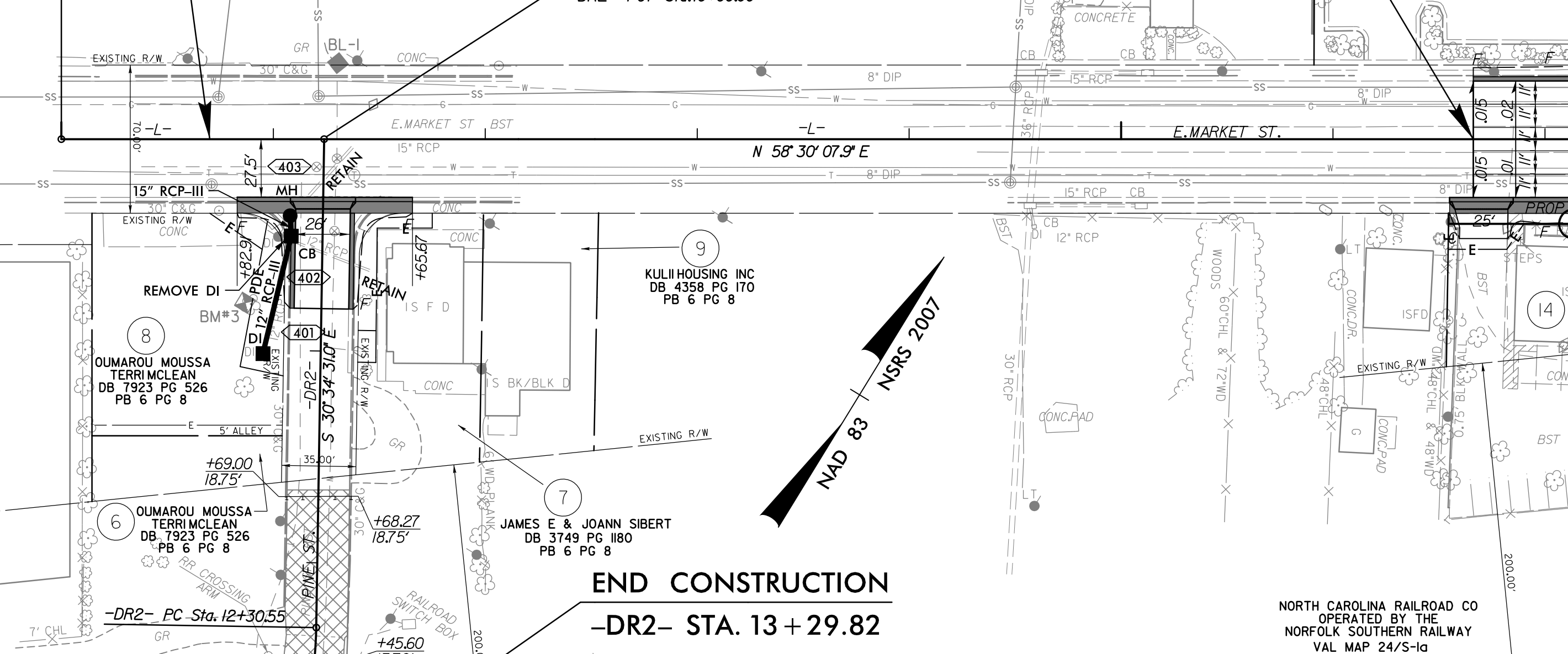
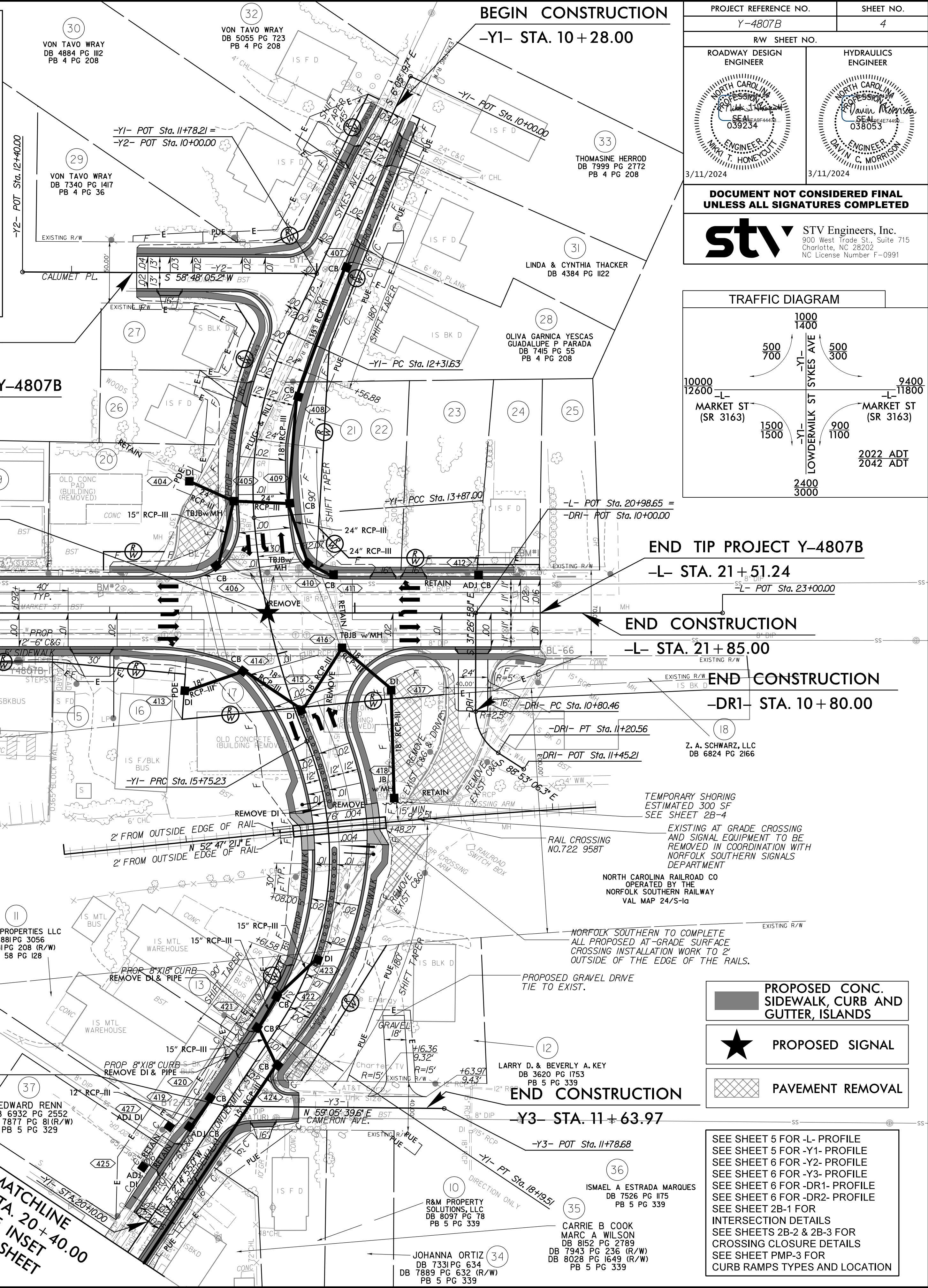
13 D. T. BUTLER WB 85E PG 1604 PB 58 PG 128	19 WRAY PROPERTIES DB 6431 PG 1693 PB 4 PG 36	24 VERNEL V. & CORNELIA S. GIBSON DB 6329 PG 1646 PB 4 PG 208
14 VON TAVO WRAY DB 7469 PG 2980	20 WRAY PROPERTIES DB 6431 PG 1693 PB 4 PG 36	25 VERNAL GIBSON DB 7820 PG 1972 PB 4 PG 208
15 CURLS RENTALS INC DB 3851 PG 1759	21 CITY OF GREENSBORO DB 8136 PG 1469 PB 4 PG 208	26 WILLIAM T. LINDA G. CAULEY DB 3946 PG 342 PB 4 PG 36
16 CURLS RENTALS INC DB 3671 PG 489	22 CITY OF GREENSBORO DB 8326 PG 3096	27 WILLIAM R COGHILL PATRICIA G COGHILL DB 4923 PG 204 PB 4 PG 36
17 CITY OF GREENSBORO DB 8231 PG 148	23 CITY OF GREENSBORO DB 8249 PG 2783 PB 4 PG 208	

- NOTES:
- 1) CONTACT THE NCDOT RESIDENT ENGINEER TO SCHEDULE THE CLOSURE OF PINE STREET.
 - 2) THE EXISTING PAVEMENT WITHIN 10' OF THE RAILS WILL BE REMOVED BY NORFOLK SOUTHERN. THE RAIL SEAL FLANGES WILL ALSO BE REMOVED BY NORFOLK SOUTHERN.
 - 3) CONTRACTOR SHALL COORDINATE WITH THE NORFOLK SOUTHERN SIGNALS DEPARTMENT FOR THE REMOVAL AND / OR RELOCATION OF THE CROSSING GATE AND FLASHERS IMPACTED BY THE PROPOSED CONSTRUCTION.
 - 4) CONTRACTOR SHALL SEED AND MULCH THE DISTURBED AREA OUTSIDE THE RAILROAD BALLAST LINE.
 - 5) CONTRACTOR SHALL CONTACT NORTH CAROLINA 811 TO LOCATE ALL UNDERGROUND UTILITIES IN THE WORK AREA. CONTRACTOR SHALL CONTACT NORFOLK SOUTHERN TO LOCATE ANY UNDERGROUND RAILROAD UTILITIES IN THE WORK AREA PRIOR TO COMMENCEMENT OF WORK IN THE CORRIDOR.
 - 6) CONTRACTOR SHALL REMOVE EXISTING HIGHWAY ROADBED AND GRADE AREA TO MATCH ADJACENT TOPOGRAPHY. ANY EXISTING CULVERTS IN THE RAILROAD DITCHES SHALL BE REMOVED AND GRADE EXISTING DITCHES TO DRAIN. CONTRACTOR SHALL COORDINATE THIS WITH THE ENGINEER ON HAULING AWAY ANY ASPHALT LEFT BY THE RAILROAD. ALL PAVEMENT WITHIN THE RAILROAD CORRIDOR IS REMOVED PRIOR TO THE CONCLUSION OF THE PROJECT.
 - 7) NORFOLK SOUTHERN FORCES WILL COMPLETE ALL CROSSING INSTALLATION WORK TO 2' OUTSIDE THE EDGE OF RAIL ON EACH SIDE OF THE PROPOSED CROSSING.
 - 8) NORFOLK SOUTHERN RESPONSIBLE FOR INSTALLATION OF RAIL SEAL ADJACENT TO EACH RAIL PRIOR TO ASPHALT INSTALLATION.
 - 9) CONTRACTOR SHALL COORDINATE WITH THE RESIDENT ENGINEER AND NORFOLK SOUTHERN WHILE WORKING WITHIN THE RAILROAD RIGHT OF WAY.
 - 10) CONTRACTOR WILL NOT BE PERMITTED TO STORE ANY EQUIPMENT ON NCRP PROPERTY WITHOUT PERMISSION FROM THE NORFOLK SOUTHERN RAILROAD ENGINEER IN ACCORDANCE WITH SECTION 6.L.1 OF THE NCRP'S SPECIAL PROVISIONS FOR PROTECTION OF RAILWAY INTERESTS.
 - 11) ALL PROPOSED ROW AND EASEMENTS ACQUIRED BY CITY OF GREENSBORO PER SHEET NUMBERS: G-1322A, G-1322B AND G-1322C.
 - 12) CITY OF GREENSBORO RESPONSIBLE FOR ADA COMPLIANCE OF PEDESTRIAN CROSSINGS ACROSS RAILROAD.
 - 13) NO EXCAVATION IS PERMITTED WITHIN 10' OF TRACK CENTERLINE AND ANY SHORING WITHIN 14' OF TRACK CENTERLINE SHALL BE LEFT IN PLACE AND CUT OFF 2' BELOW GRADE. THE CONTRACTOR SHALL SUBMIT A SHORING SUBMITTAL FOR REVIEW AND APPROVAL.
 - 14) TRENCH BOXES ARE NOT PERMITTED FOR SHORING SYSTEMS IN THE RAILROAD EMBANKMENT.

-Y1- CURVE DATA			-DR1- CURVE DATA			-DR2- CURVE DATA		
PI Sta 13+110.0	PI Sta 14+81.89	PI Sta 17+08.11	PI Sta 11+02.37	PI Sta 12+85.48	PI Sta 12+85.48	PI Sta 12+85.48	PI Sta 12+85.48	PI Sta 12+85.48
$\Delta = 29^{\circ} 40' 23.3''$ (LT)	$\Delta = 17^{\circ} 58' 27.7''$ (LT)	$\Delta = 55^{\circ} 59' 05.7''$ (RT)	$\Delta = 57^{\circ} 26' 08.1''$ (LT)	$\Delta = 32^{\circ} 14' 58.4''$ (RT)	$\Delta = 32^{\circ} 14' 58.4''$ (RT)	$\Delta = 32^{\circ} 14' 58.4''$ (RT)	$\Delta = 32^{\circ} 14' 58.4''$ (RT)	$\Delta = 32^{\circ} 14' 58.4''$ (RT)
D = 19' 05' 54.9"	D = 9' 32' 57.5"	D = 22' 55' 05.9"	D = 143' 14' 22.0"	D = 143' 14' 22.0"	D = 143' 14' 22.0"	D = 143' 14' 22.0"	D = 143' 14' 22.0"	D = 143' 14' 22.0"
L = 155.37'	L = 188.23'	L = 244.28'	L = 401.0'	L = 106.94'	L = 106.94'	L = 106.94'	L = 106.94'	L = 106.94'
T = 79.47'	T = 94.89'	T = 132.89'	T = 219.2'	T = 54.93'	T = 54.93'	T = 54.93'	T = 54.93'	T = 54.93'
R = 300.00'	R = 600.00'	R = 250.00'	R = 40.00'	R = 190.00'	R = 190.00'	R = 190.00'	R = 190.00'	R = 190.00'
e = 2.0%	e = NC	e = 4.0%	e = 2.0%	e = 2.0%	e = 2.0%	e = 2.0%	e = 2.0%	e = 2.0%
RUNOFF = 60'	RUNOFF = N/A	RUNOFF = 120'	RUNOFF = 60'	RUNOFF = 60'	RUNOFF = 60'	RUNOFF = 60'	RUNOFF = 60'	RUNOFF = 60'

BEGIN CONSTRUCTION
-L- STA. 10+70.00
-Y1- CURVE DATA
-DR1- CURVE DATA
-DR2- CURVE DATA

END CONSTRUCTION
-Y2- STA. 11+50.00
BEGIN TIP PROJECT Y-4807B
-L- STA. 16+66.17



PROJECT REFERENCE NO. Y-4807B SHEET NO. 4

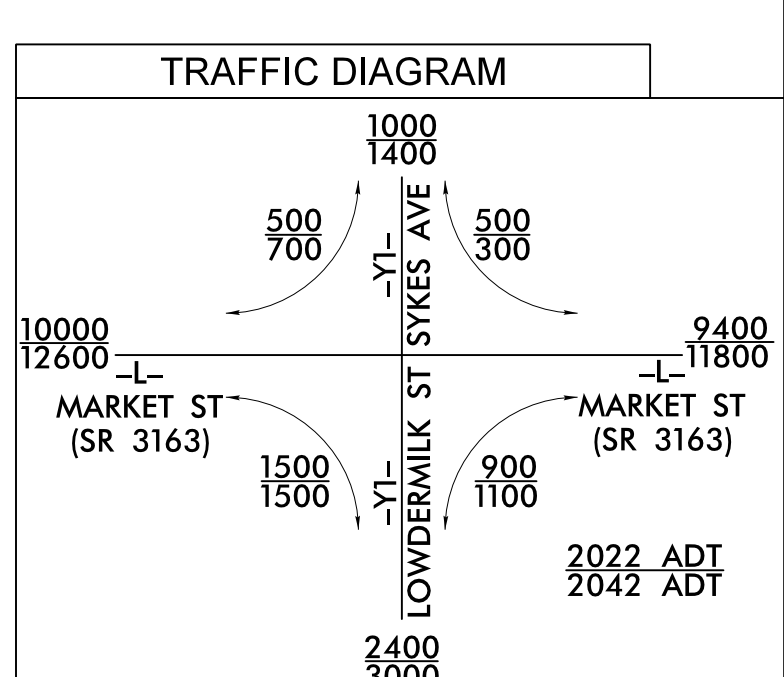
RW SHEET NO. ENGINEER

HYDRAULICS ENGINEER

3/11/2024

DOCUMENT NOT CONSIDERED FINAL UNLESS ALL SIGNATURES COMPLETED

STV STV Engineers, Inc.
900 West Trade St., Suite 715
Charlotte, NC 28202
NC License Number F-0991



END TIP PROJECT Y-4807B
-L- STA. 21+51.24
END CONSTRUCTION
-L- STA. 21+85.00
END CONSTRUCTION
-DR1- STA. 10+80.00

Z. A. SCHWARZ, LLC
DB 6824 PG 2166

TEMPORARY SHORING ESTIMATED 300 SF SEE SHEET 2B-4

EXISTING AT GRADE CROSSING AND SIGNAL EQUIPMENT TO BE REMOVED IN COORDINATION WITH NORFOLK SOUTHERN SIGNALS DEPARTMENT

NORTH CAROLINA RAILROAD CO OPERATED BY THE NORFOLK SOUTHERN RAILWAY VAL MAP 24/S-1a

NORFOLK SOUTHERN TO COMPLETE ALL PROPOSED AT-GRADE SURFACE CROSSING INSTALLATION WORK TO 2' OUTSIDE OF THE EDGE OF THE RAILS.

PROPOSED GRAVEL DRIVE TIE TO EXIST.

PROPOSED CONC. SIDEWALK, CURB AND GUTTER, ISLANDS

PROPOSED SIGNAL

PAVEMENT REMOVAL

SEE SHEET 5 FOR -L- PROFILE
SEE SHEET 5 FOR -Y1- PROFILE
SEE SHEET 6 FOR -Y2- PROFILE
SEE SHEET 6 FOR -Y3- PROFILE
SEE SHEET 6 FOR -DR1- PROFILE
SEE SHEET 6 FOR -DR2- PROFILE
SEE SHEET 2B-1 FOR INTERSECTION DETAILS
SEE SHEETS 2B-2 & 2B-3 FOR CROSSING CLOSURE DETAILS
SEE SHEET PMP-3 FOR CURB RAMPS TYPES AND LOCATION