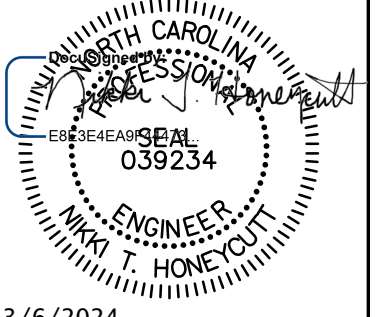




CROSSING CLOSURE DETAIL

PINE STREET -DR2-

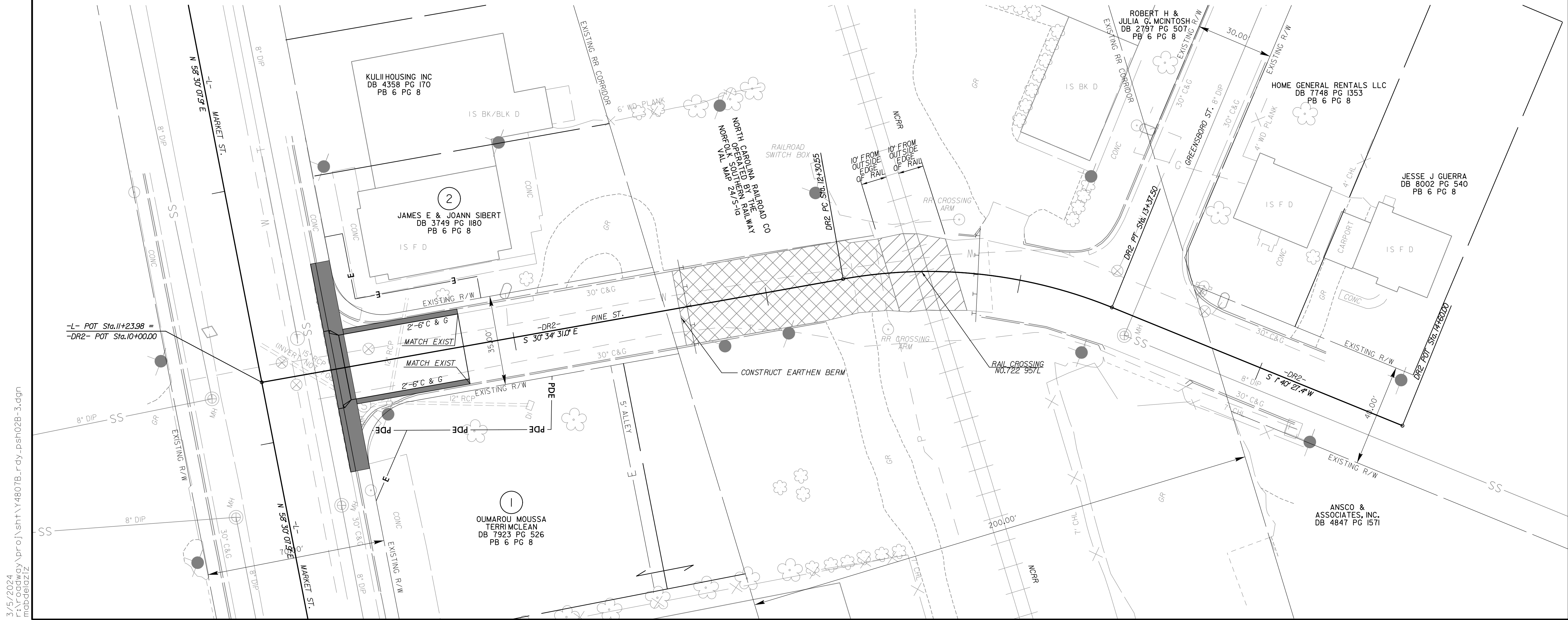
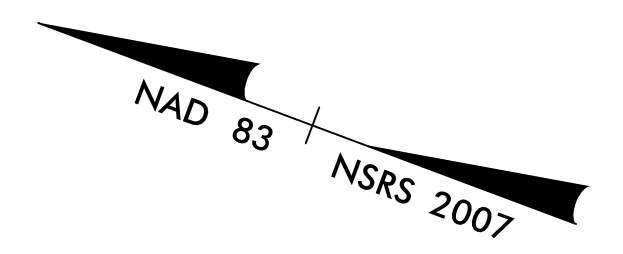
PROJECT REFERENCE NO. Y-4807B	SHEET NO. 2B-3
RW SHEET NO.	
ROADWAY DESIGN ENGINEER	
	
3/6/2024	
DOCUMENT NOT CONSIDERED FINAL UNLESS ALL SIGNATURES COMPLETED	
	
STV Engineers, Inc. 900 West Trade St., Suite 715 Charlotte, NC 28202 NC License Number F-0991	
GRAPHIC SCALES	
	
PLANS	

NOTE:

- CONTACT THE NCDOT RESIDENT ENGINEER TO SCHEDULE THE CLOSURE OF PINE STREET.
- THE EXISTING PAVEMENT WITHIN 10' OF THE EDGE OF THE RAILS, WILL BE REMOVED BY OTHERS. THE EXISTING RAIL SEAL FLANGES CROSSBUCKS, GATES AND FLASHERS WILL BE REMOVED BY OTHERS.
- CONTRACTOR SHALL SEED AND MULCH THE DISTURBED AREA OUTSIDE THE RAILROAD BALLAST LINE.
- CONTRACTOR SHALL CONTACT NORTH CAROLINA 811 TO LOCATE ALL UNDERGROUND UTILITIES IN THE WORK AREA. CONTRACTOR SHALL ALSO CONTACT NORFOLK SOUTHERN RAILWAY TO LOCATE ANY UNDERGROUND RAILROAD UTILITIES IN THE WORK AREA PRIOR TO COMMENCEMENT OF WORK ON THE CORRIDOR.
- CONTRACTOR SHALL REMOVE EXISTING HIGHWAY ROADBED AND GRADE AREA TO MATCH ADJACENT TOPOGRAPHY. ANY EXISTING CULVERTS IN THE RAILROAD DITCHES SHALL BE REMOVED AND GRADE EXISTING DITCHES TO DRAIN. CONTRACTOR SHALL COORDINATE WITH THE ENGINEER ON HAULING AWAY ANY ASPHALT LEFT BY THE REMOVAL BY OTHERS. ALL PAVEMENT WITHIN THE NCR-NSRR CORRIDOR IS TO BE REMOVED PRIOR TO THE CONCLUSION OF THE PROJECT.
- PROVIDE PERMANENT MARKING AND SIGNING AS SHOWN IN THE PM-SIGNING PLANS.
- PROVIDE SIGNING AND DEVICES REQUIRED TO CLOSE THE ROAD ACCORDING TO THE ROADWAY STANDARD DRAWINGS AND TRAFFIC MANAGEMENT PLANS.
- ENSURE ALL NECESSARY SIGNING IS IN PLACE PRIOR TO ALTERNATING ANY TRAFFIC PATTERN.

	PAVEMENT REMOVAL
	PAVEMENT REMOVAL BY OTHERS (85 SY)

NOTE: ALL WORK WITHIN NCR CORRIDOR TO BE COORDINATED WITH NCDOT, NC RAILROAD AND NS RAILWAY.



3/5/2024
 r:\roadway\proj\sh\Y4807B_rdy_psh02B-3.dgn
 mabdelaiz