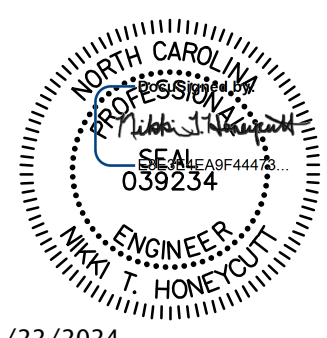
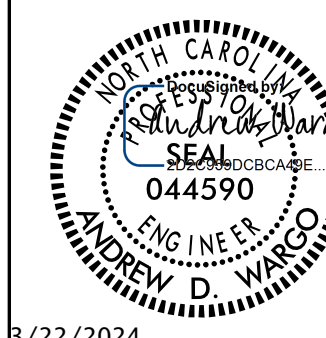

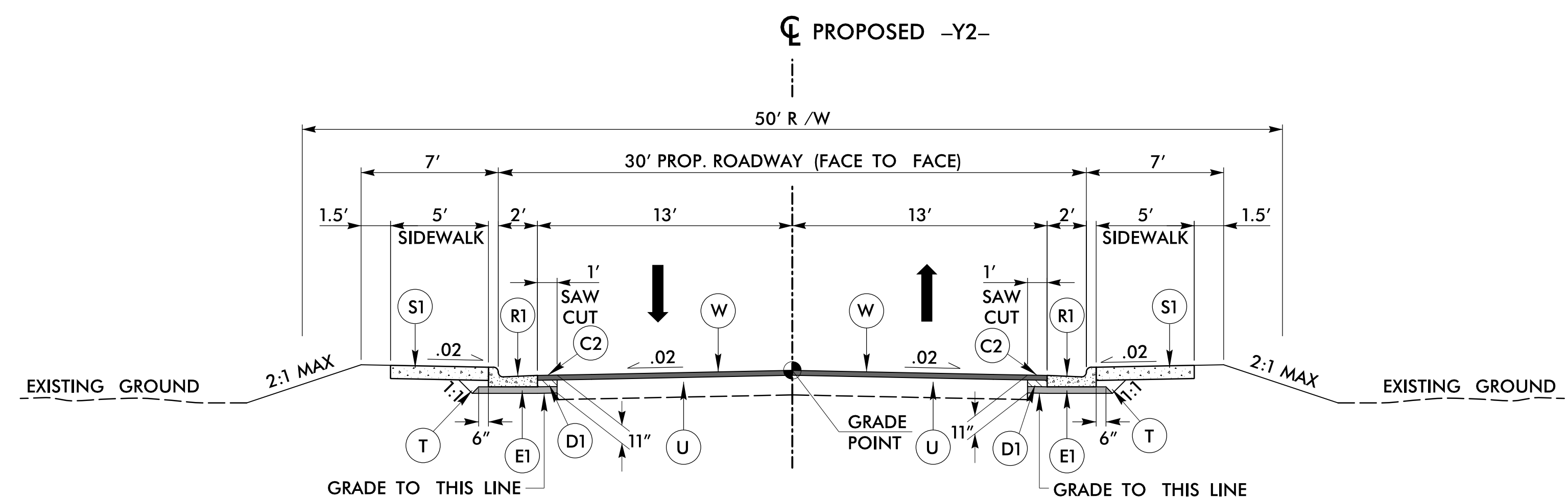
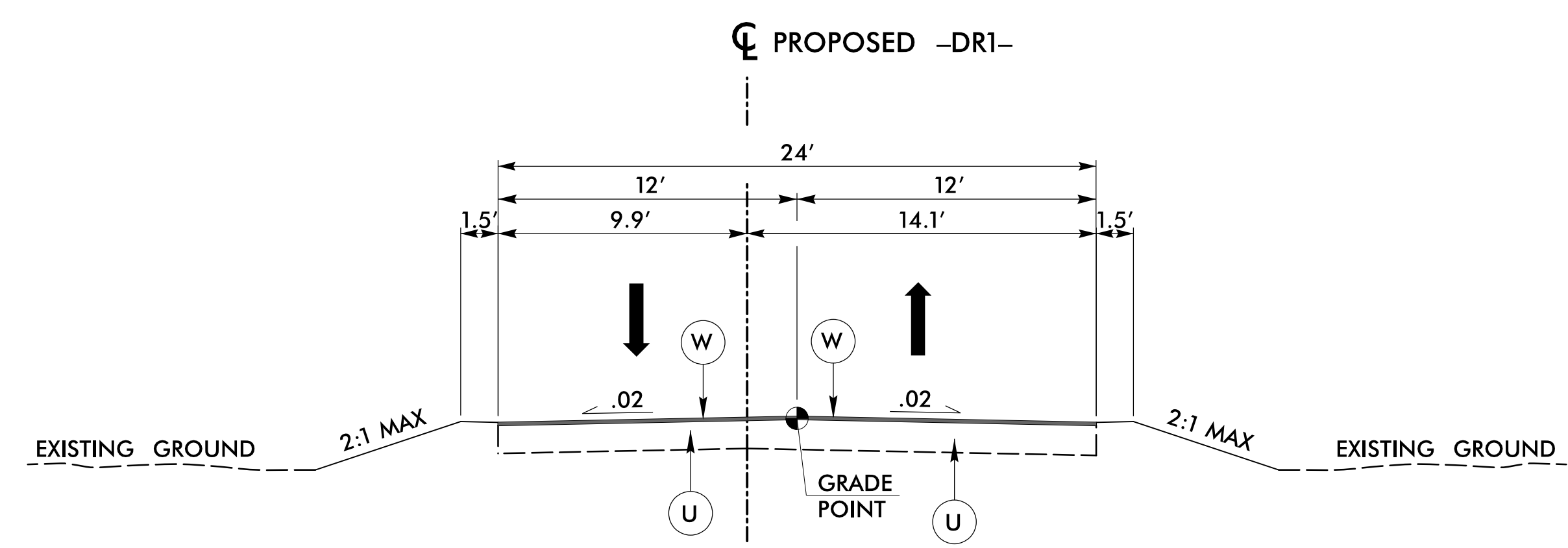


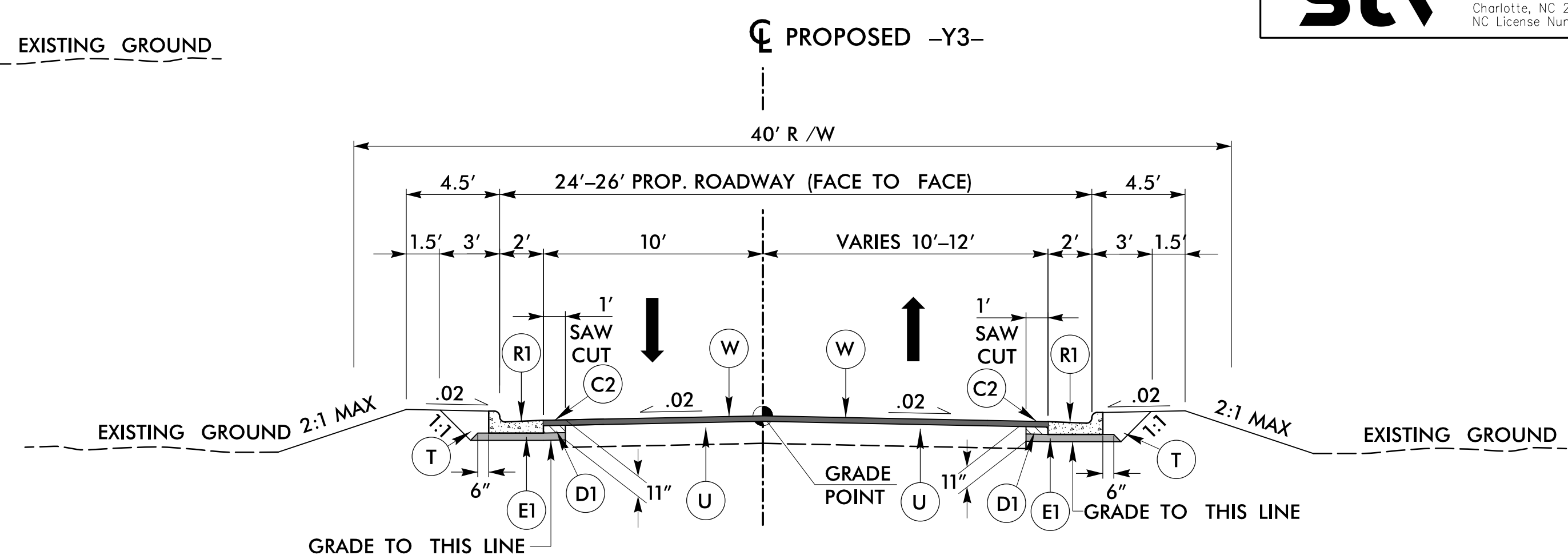
PROJECT REFERENCE NO. Y-4807B	SHEET NO. 2A-3
RW SHEET NO.	
ROADWAY DESIGN ENGINEER 	PAVEMENT DESIGN ENGINEER 
3/22/2024	3/22/2024
DOCUMENT NOT CONSIDERED FINAL UNLESS ALL SIGNATURES COMPLETED	
 STV Engineers, Inc. 900 West Trade St., Suite 715 Charlotte, NC 28202 NC License Number F-0991	



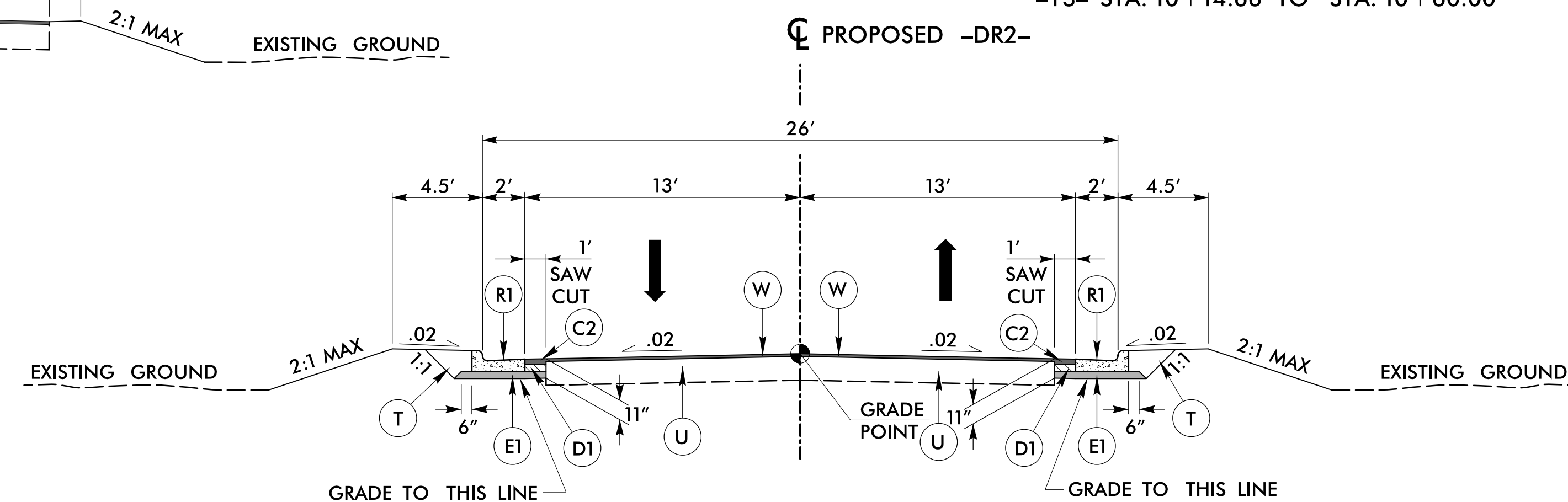
TYPICAL SECTION NO. 4
CALUMET PLACE
-Y2- STA. 10+13.25 TO STA. 11+46.83



TYPICAL SECTION NO. 6
DR1
-DR1- STA. 10+27.66 TO STA. 10+80.00



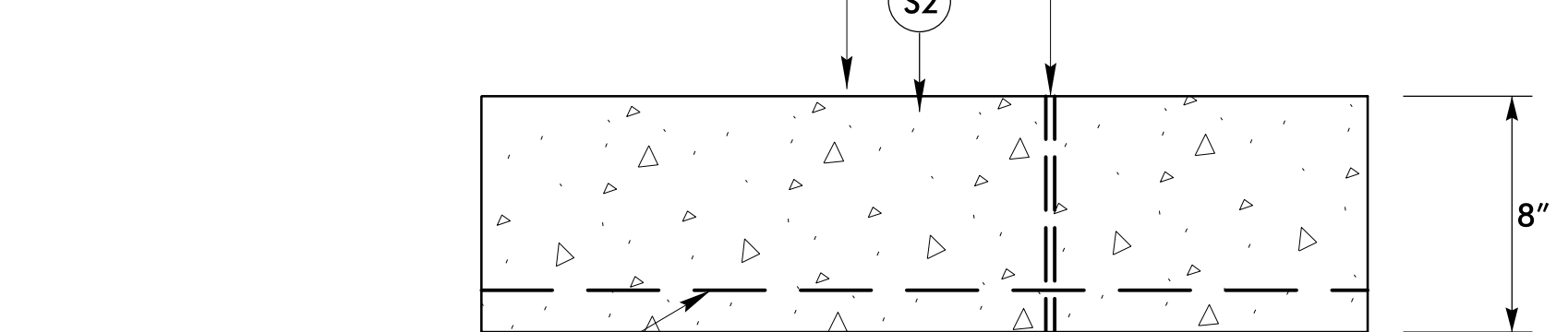
TYPICAL SECTION NO. 5
CAMERON AVENUE
-Y3- STA. 10+14.66 TO STA. 10+60.00



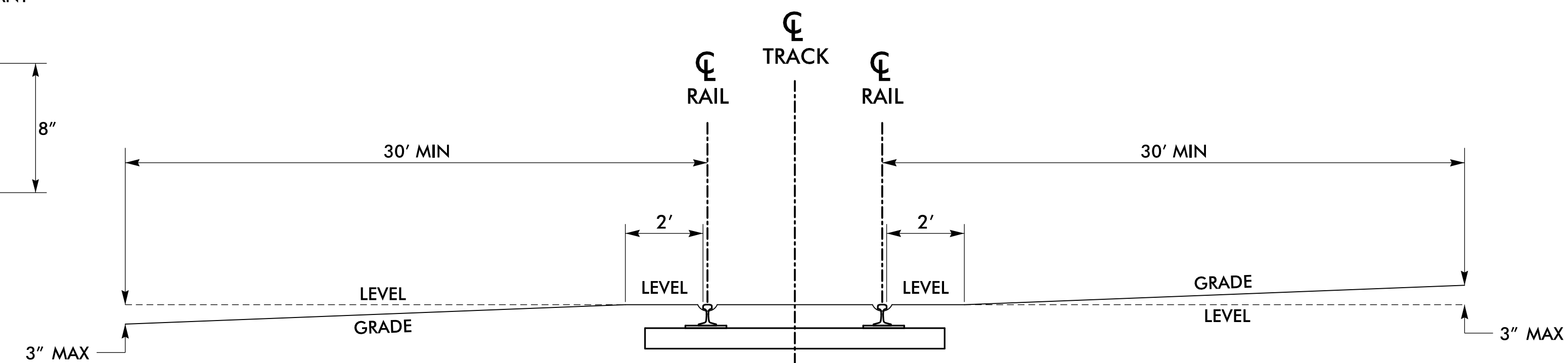
TYPICAL SECTION NO. 7
PINE STREET (-DR2-)
-DR2- STA. 10+27.45 TO STA. 10+80.00

CONTROL JOINT
SAW CUT JOINTS - MAXIMUM 15' SPACING
JOINTS TO BE 1/8" X 1-1/2" TO 2" DEEP
WITH WATERPROOF SEALANT

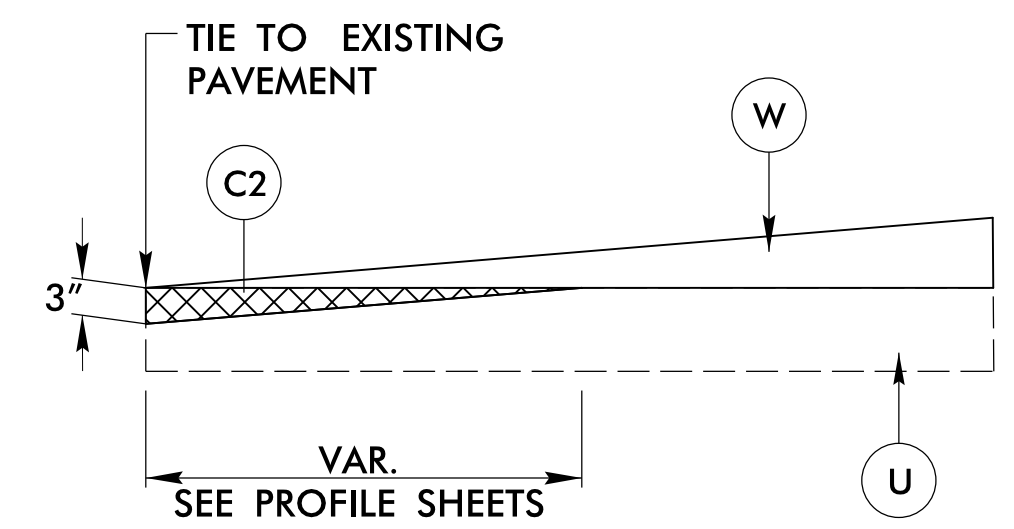
CONSTRUCTION JOINT
IF USED, INSTALL 5/8" DIA. SMOOTH STEEL DOWELS 18" O.C.,
2' LONG GREASE ON SIDE OF STEEL AND SEAL WITH
WATERPROOF SEALANT



REINFORCED CONCRETE SIDEWALK
TO BE USED IN RAILROAD RIGHT OF WAY
(SEE SPECIAL PROVISION)



CROSSING DETAIL



INCIDENTAL MILLING DETAIL

FINAL PAVEMENT SCHEDULE	
C1	1.5" S9.5B
C2	3" S9.5B
C3	VAR. DEPTH S9.5B
D1	4" I19.0C
D2	VAR. DEPTH I19.0C
E1	4" B25.0C
E2	VAR. DEPTH B25.0C
K	12" CLASS IV
N	GEOTEXTILE
R1	2'-6" CONCRETE CURB AND GUTTER
R2	8" X 18" CONCRETE CURB
R3	5" MONO. CONC. ISLAND (KEYED-IN)
S1	4" CONCRETE SIDEWALK
S2	8" REINFORCED CONCRETE SIDEWALK
T	EARTH MATERIAL
U	EXISTING PAVEMENT
W	WEDGING

ALL PAVEMENT SLOPES 1:1 UNLESS NOTED OTHERWISE

3/22/2024 R:\Roadway\Proj\SH\Y4807B_rdy_psh02A-L_Typ.dgn mabdelaziz