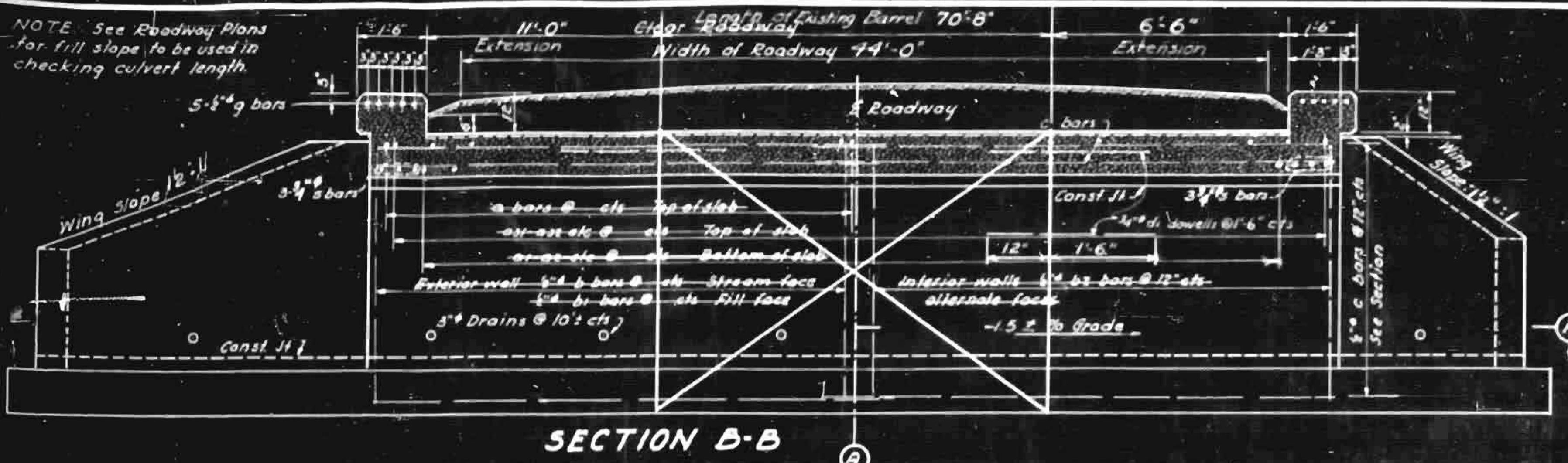
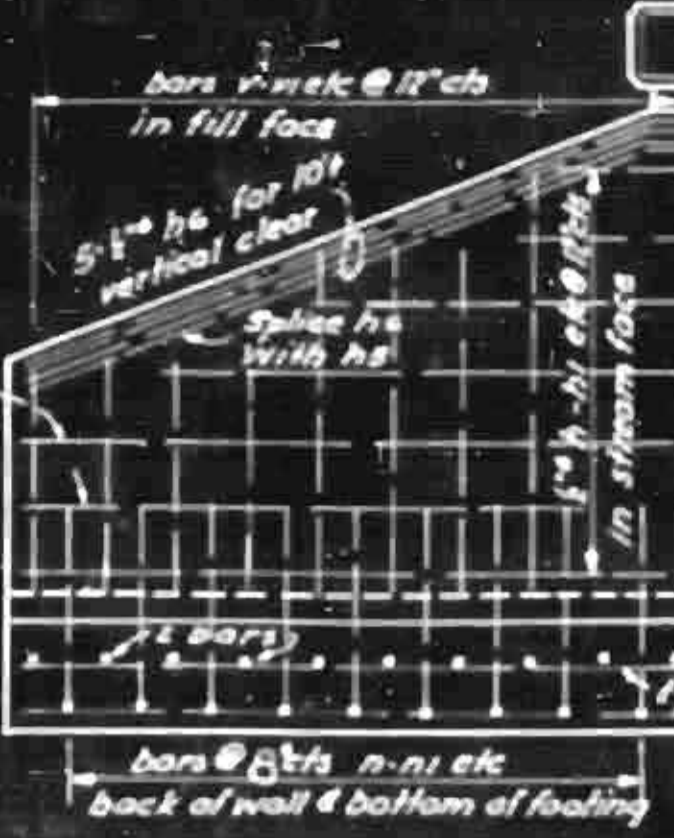


NOTE See Roadway Plans for fill slope to be used in checking culvert length.



SECTION B-B



ELEVATION WING W1

Note: For Surface Finish requirements, see Special Provisions.

END ELEVATION

NOTE: Wall footings shall be keyed a minimum of 6" into rock.

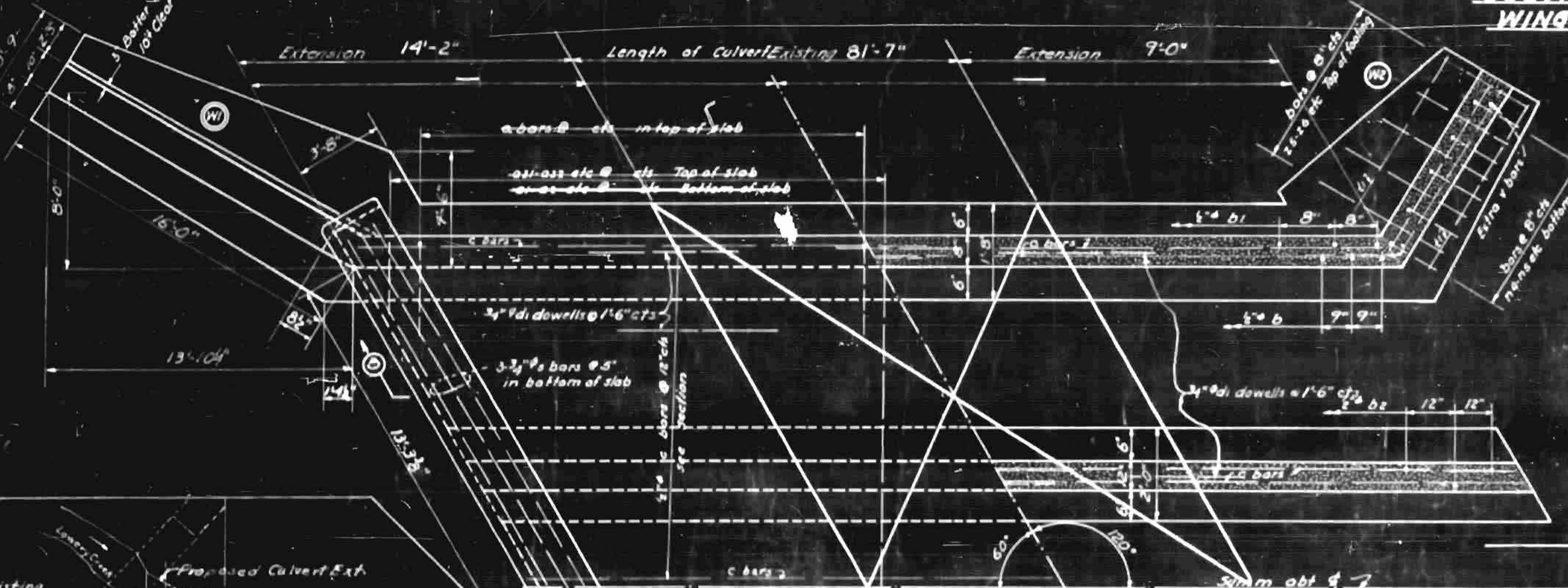
ELEVATION WING W2

DESIGN DATA

Specifications Assumed Live Load Distribution of live load Impact allowance Steel in tension Concrete in compression Concrete in shear Equivalent fluid pressure of earth

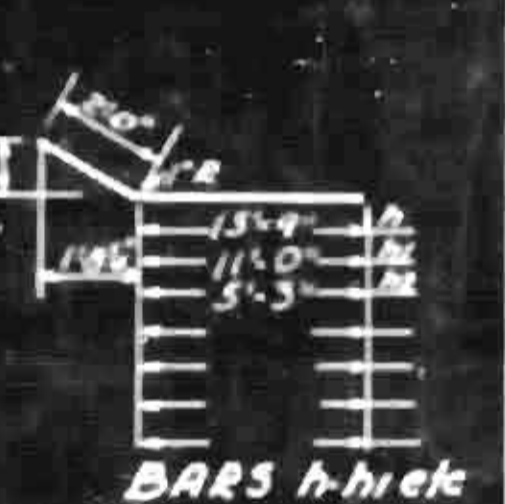
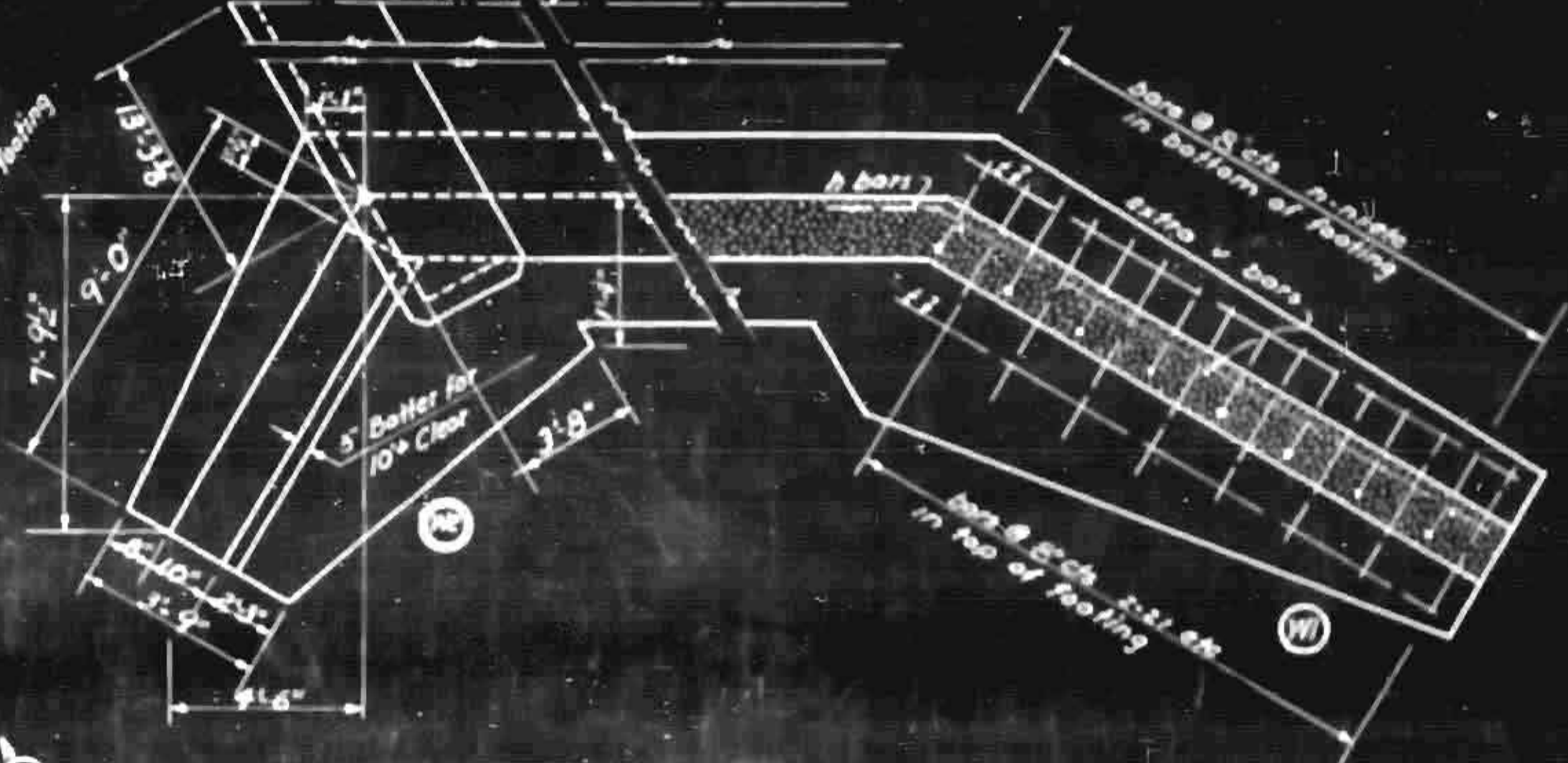
GENERAL NOTE

All concrete to be Class A using standard size No. 3 coarse aggregate. Headwalls shall be given a Class 1 surface finish and wings shall be given a Class 2 surface finish.



PART PLAN

PART SECTION A-A



BARS h-hick

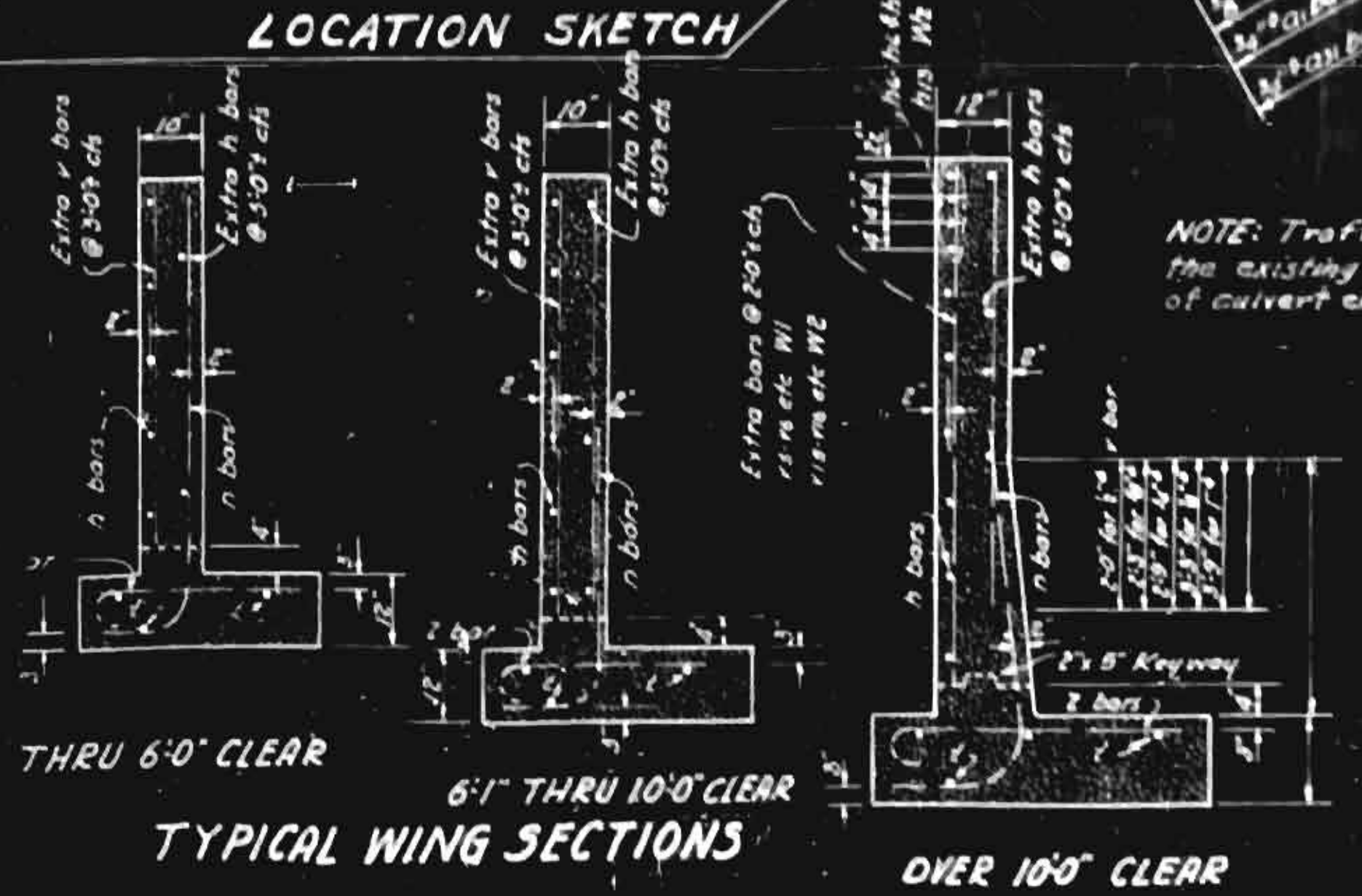


BARS a

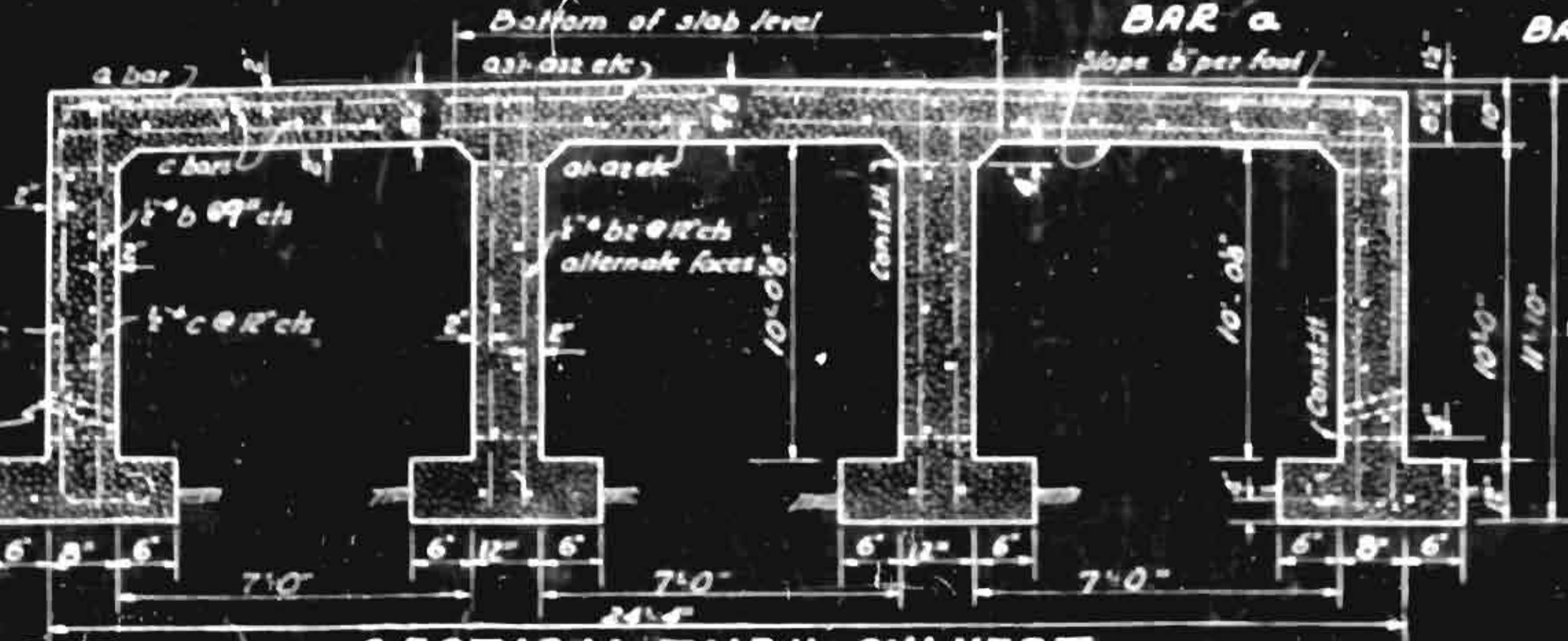
BARS n-n1 etc.

BARS 2-21 etc.

BAR bi



TYPICAL WING SECTIONS



SECTION THRU CULVERT

BILL OF MATERIAL TRIPLE 7'-0" x 10'-0" CULVERT - LENGTH 14'-2"

Table with columns for Bar No, Size, Length, Weight, and Total Weight for various reinforcement bars.

SPECIAL ASSEMBLED BY... CHECKED BY... DATE... STANDARD

Concrete per Foot length of barrel 2.72 Concrete in 2 Headwalls and 4 Wing walls 26.8

PROJECT NO. 7442 FORSYTH COUNTY STATION: 128+55

STATE OF NORTH CAROLINA STATE HIGHWAY AND PUBLIC WORKS COMMISSION TRIPLE 7'x10' R.C. BOX CULVERT EXT. WITHOUT FLOOR SLAB 30' L.H. SKEW DEC. 1949

C'00-T-V (No Floor Slab) LM