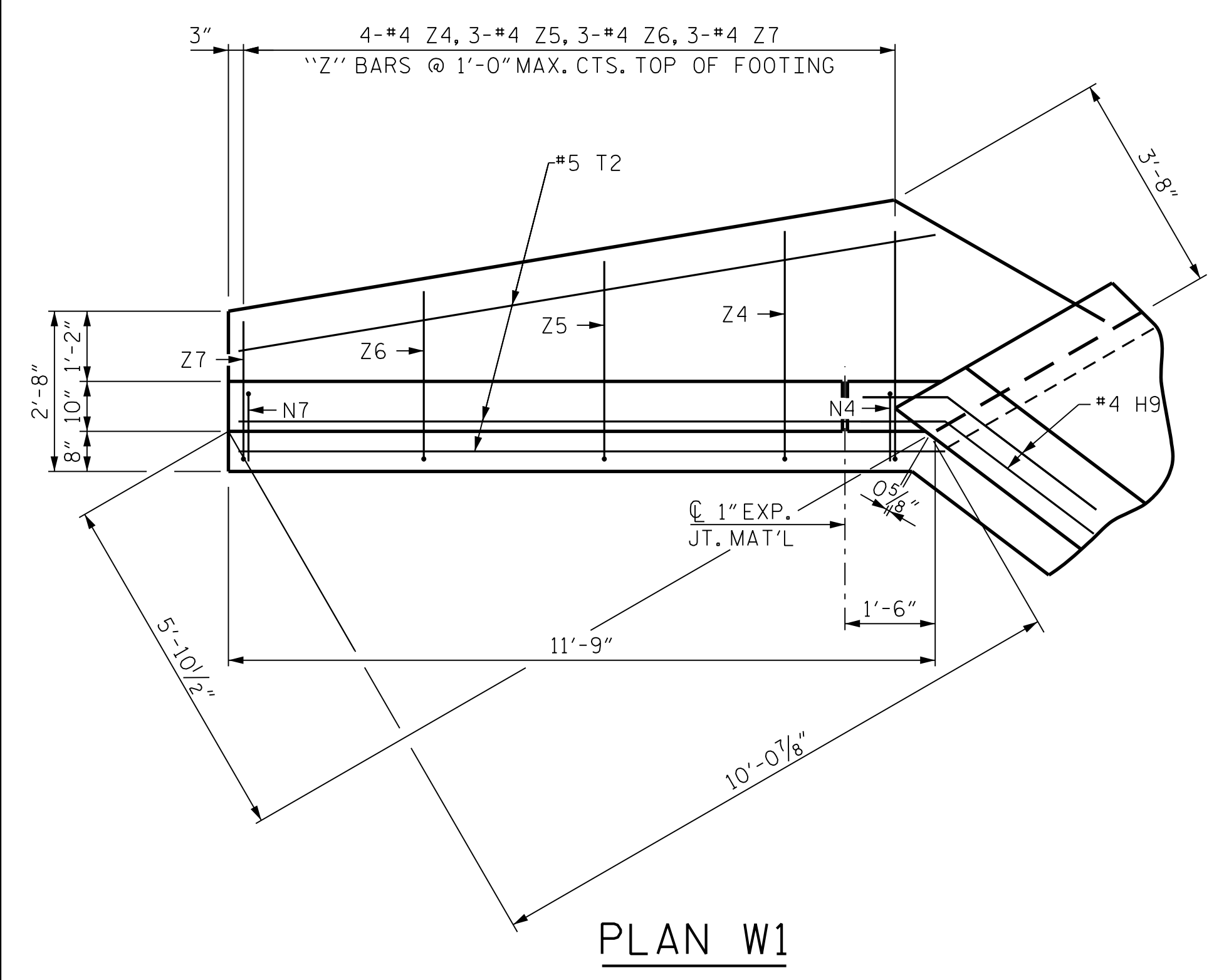
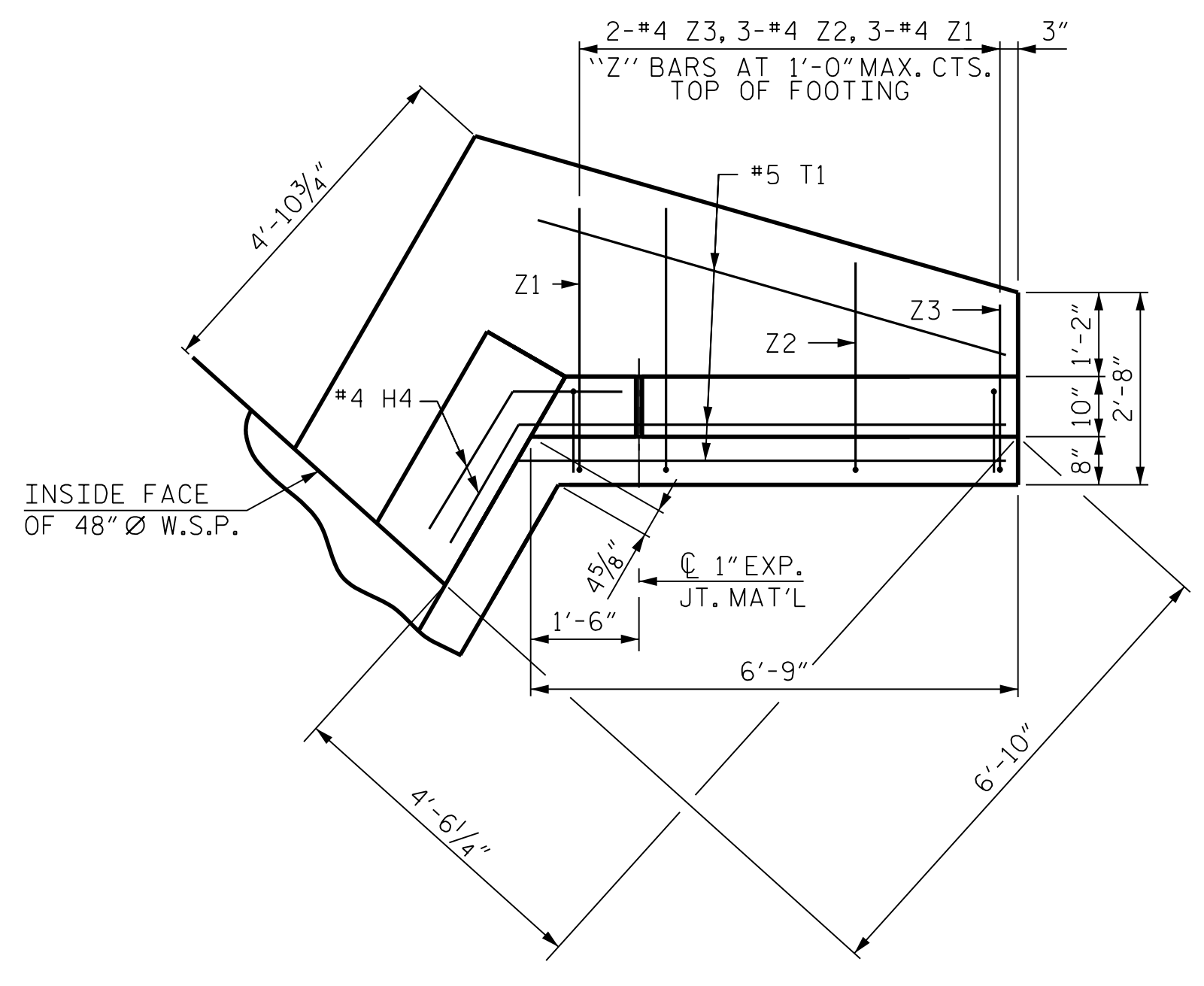


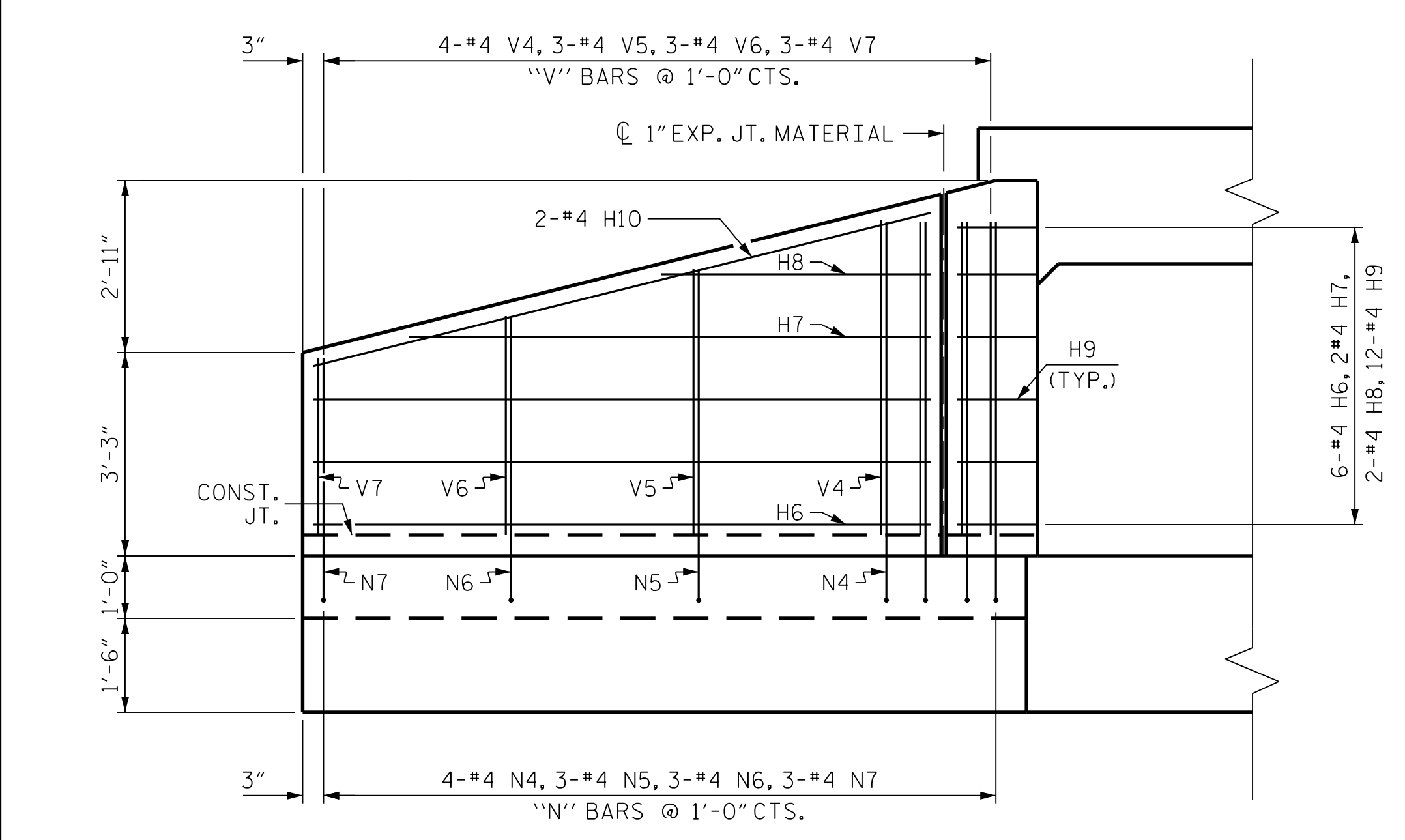
11/10/2023 R:\Structures\Culvert\Martin_MillCreek_Culvert\Drawings\Final\R-2577A_SMJ_CU-2-13_330000.dgn



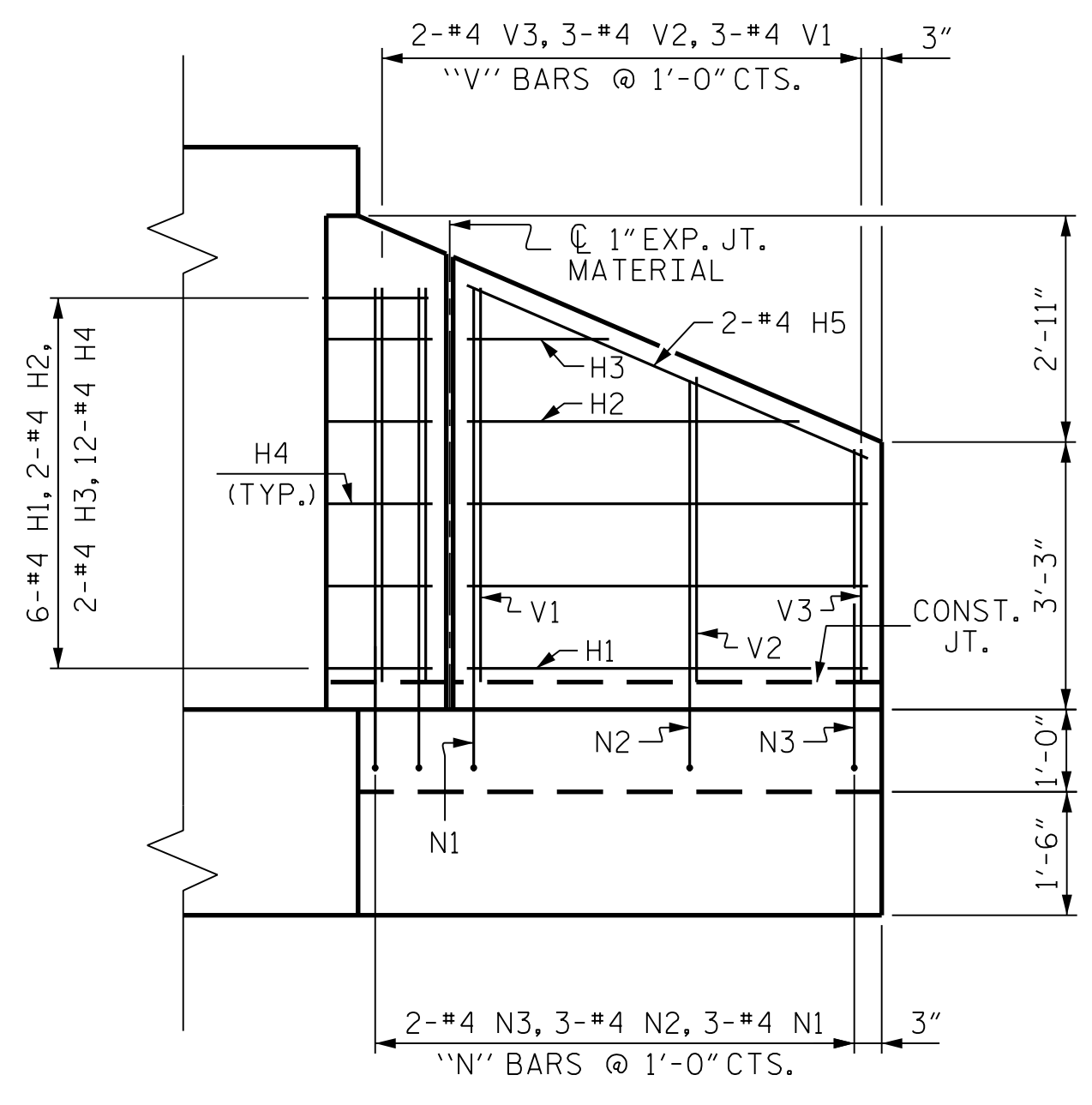
PLAN W1



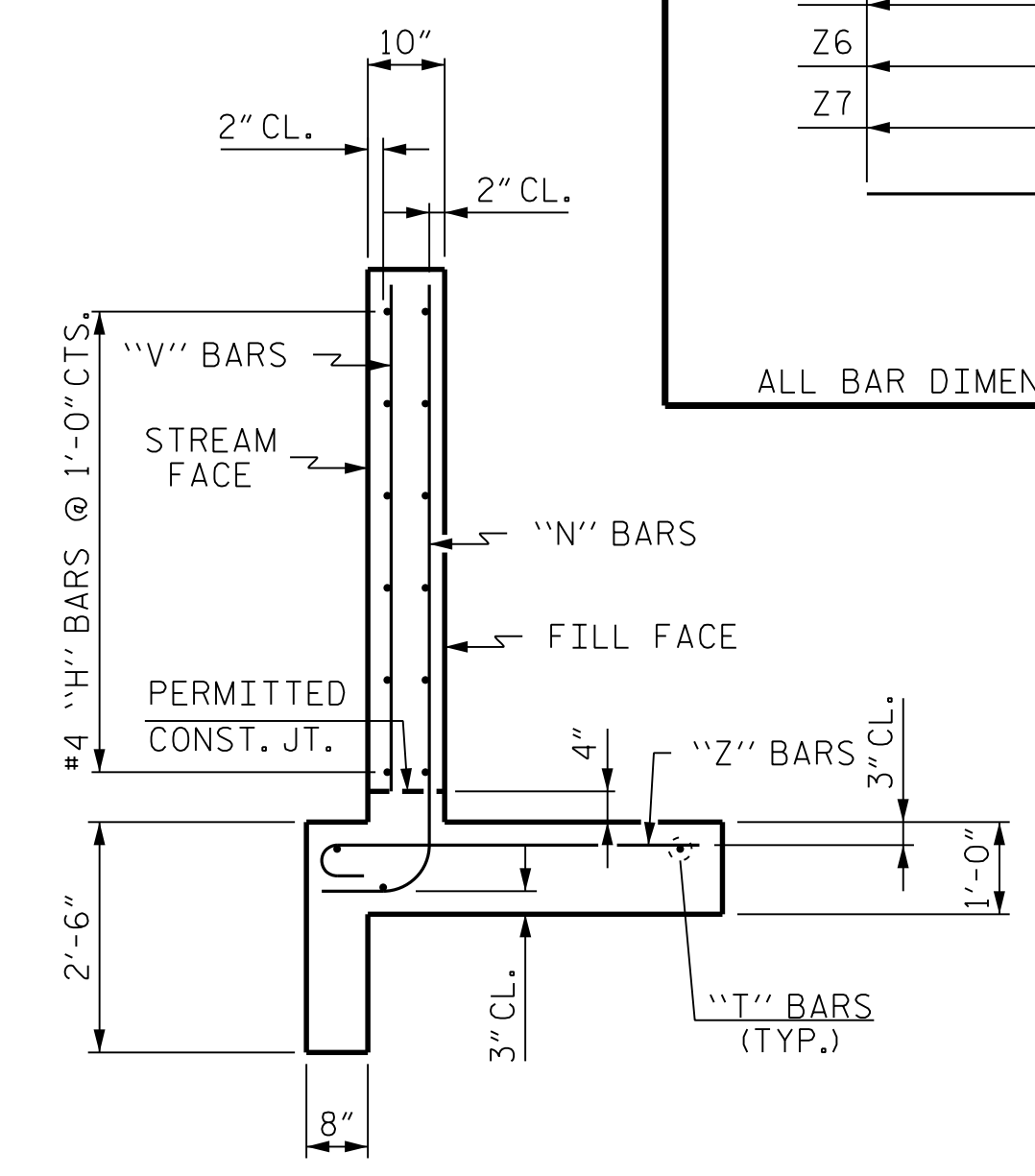
PLAN W2



ELEVATION W1



ELEVATION W2



TYPICAL WING SECTION

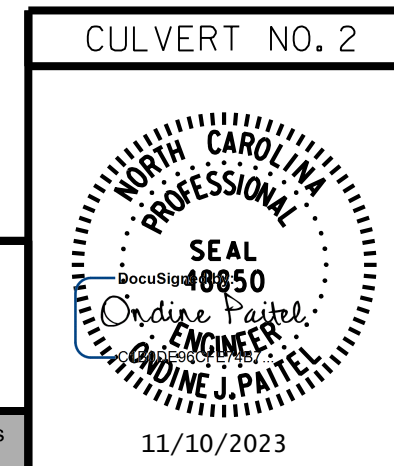
BAR TYPES	
1	
2	
3	
4	

ALL BAR DIMENSIONS ARE OUT TO OUT.

BILL OF MATERIAL					
BAR	NO.	SIZE	TYPE	LENGTH	WEIGHT
H1	6	#4	STR.	4'-10"	19
H2	2	#4	STR.	4'-0"	5
H3	2	#4	STR.	1'-9"	2
H4	12	#4	1	3'-3"	26
H5	2	#4	STR.	5'-3"	7
H6	6	#4	STR.	9'-10"	39
H7	2	#4	STR.	8'-4"	11
H8	2	#4	STR.	4'-3"	6
H9	12	#4	2	3'-3"	26
H10	2	#4	STR.	10'-2"	14
N1	3	#4	3	6'-10"	14
N2	3	#4	3	5'-9"	12
N3	2	#4	3	4'-10"	6
N4	4	#4	3	7'-1"	19
N5	3	#4	3	6'-4"	13
N6	3	#4	3	5'-7"	11
N7	3	#4	3	4'-10"	10
T1	3	#5	STR.	6'-9"	21
T2	3	#5	STR.	11'-9"	37
V1	3	#4	STR.	4'-9"	10
V2	3	#4	STR.	3'-8"	7
V3	2	#4	STR.	2'-10"	4
V4	4	#4	STR.	5'-0"	13
V5	3	#4	STR.	4'-3"	9
V6	3	#4	STR.	3'-6"	7
V7	3	#4	STR.	2'-10"	6
Z1	3	#4	4	4'-2"	8
Z2	3	#4	4	3'-5"	7
Z3	2	#4	4	2'-10"	4
Z4	4	#4	4	4'-4"	12
Z5	3	#4	4	3'-10"	8
Z6	3	#4	4	3'-4"	7
Z7	3	#4	4	2'-10"	6
REINFORCING STEEL FOR 2 WINGS					406 LBS
CLASS A CONCRETE 2 WINGS					12.3 CY
INLET HEADWALLS					1.1 CY
INLET END CURTAIN WALLS					0.8 CY
TOTAL					14.2 CY

PROJECT NO. R-2577A
 FORSYTH COUNTY
 STATION: 229+09.00 -L2-

SHEET 13 OF 14

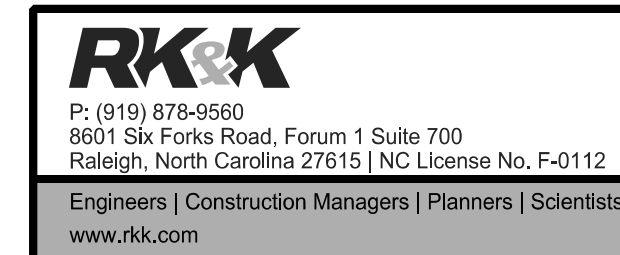


STATE OF NORTH CAROLINA
 DEPARTMENT OF TRANSPORTATION
 RALEIGH

CULVERT NO. 2

WING DETAILS
 INLET SIDE
 STAGE II

DRAWN BY : T. K. BOYD DATE : NOV 2023
 CHECKED BY : B. D. KLAPPENBACH DATE : NOV 2023
 DESIGN ENGINEER OF RECORD : O. J. PAITEL DATE : NOV 2023



REVISIONS

NO.	BY:	DATE:	NO.	BY:	DATE:
1			3		
2			4		

SHEET NO. CU-2-13
 TOTAL SHEETS 14

DOCUMENT NOT CONSIDERED FINAL
 UNLESS ALL SIGNATURES COMPLETED