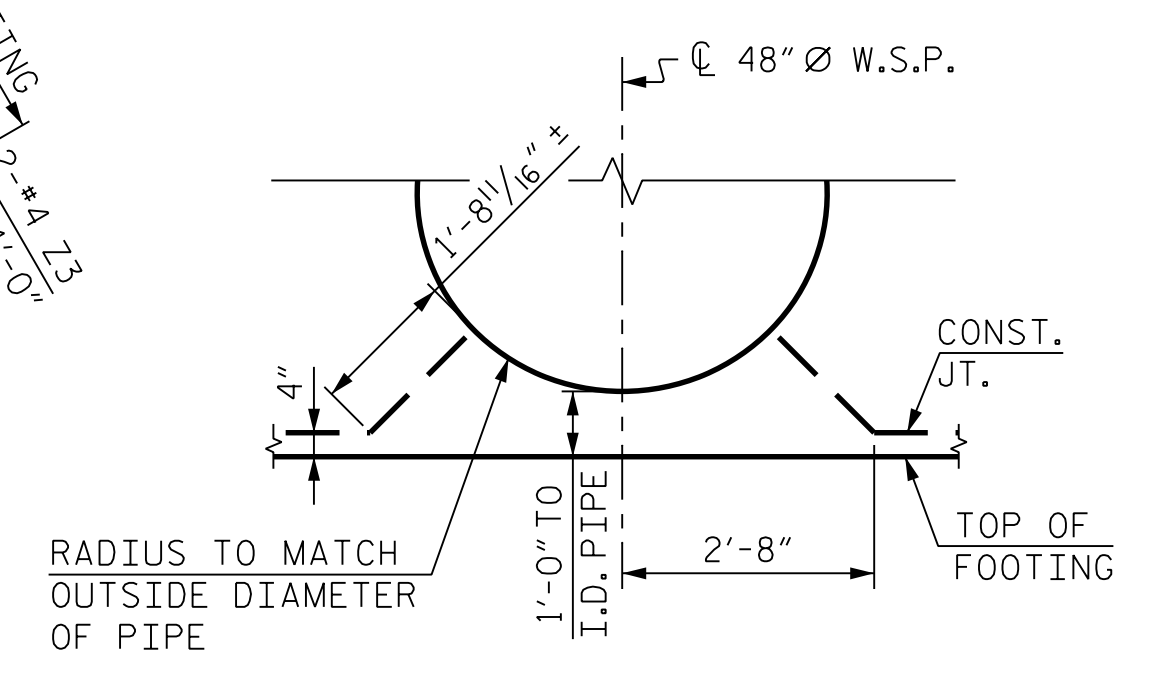
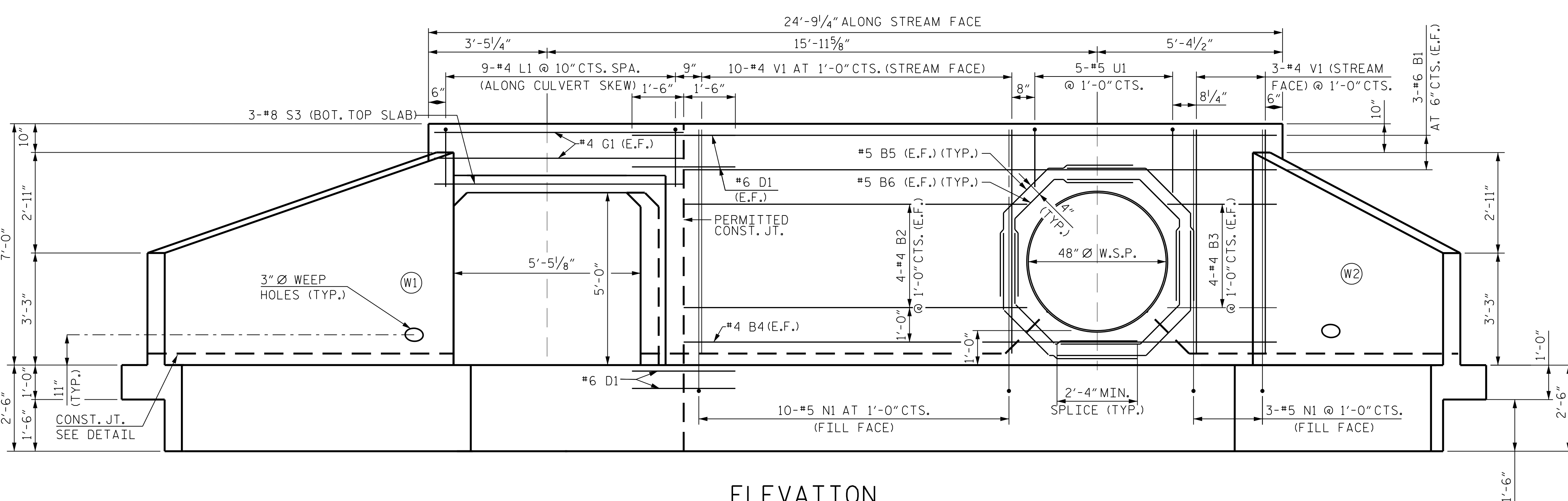


PLAN

**NOTES:**  
 FOR REINFORCEMENT IN HEADWALL, SECTION H-H, SECTION I-I, SECTION J-J, SEE BILL OF MATERIAL SHOWN ON SHEET 14 OF 14.  
 FOR REINFORCING STEEL IN WINGWALLS, SEE SHEET 13 OF 14.  
 BARS MAY BE SHIFTED SLIGHTLY TO ACCOMMODATE LOCATION OF 48" Ø W.S.P.



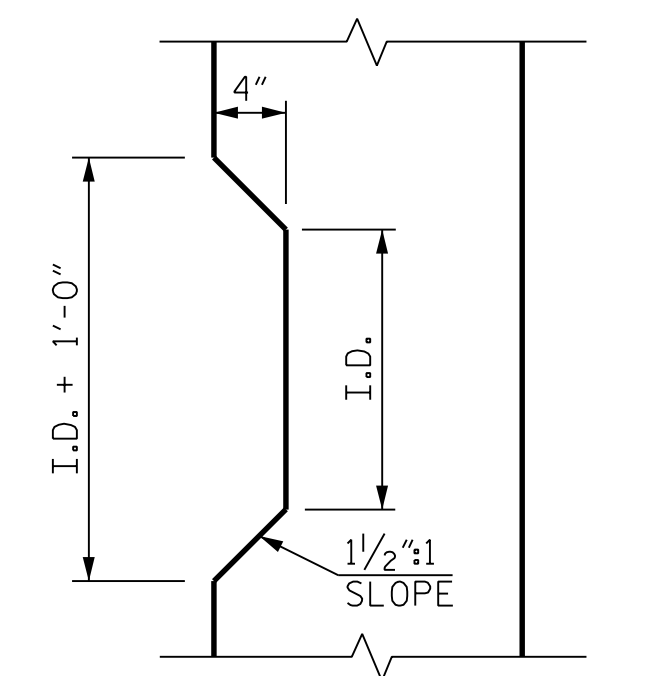
CONSTRUCTION JOINT DETAIL



ELEVATION

(LOOKING DOWNSTREAM - INLET - STAGE II)  
 (FOR L1 BAR DETAILS, SEE CULVERT BILL OF MATERIAL ON SHEET 14 OF 14)  
 (FOR INVERT ELEVATIONS, SEE SHEET 9 OF 14)

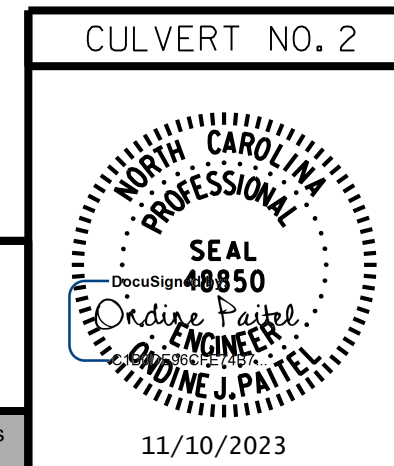
(INLET END - 48" Ø W.S.P.)



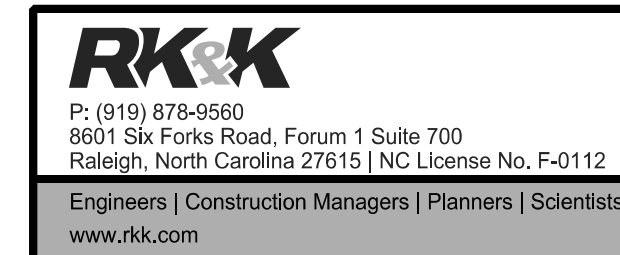
TAPER DETAIL

PROJECT NO. R-2577A  
 FORSYTH COUNTY  
 STATION: 229+09.00 -L2-

SHEET 12 OF 14



STATE OF NORTH CAROLINA  
 DEPARTMENT OF TRANSPORTATION  
 RALEIGH  
 SINGLE 5 FT. X 5 FT.  
 CONCRETE BOX CULVERT  
 HEADWALL - INLET EXTENSION  
 STAGE II



**DOCUMENT NOT CONSIDERED FINAL  
 UNLESS ALL SIGNATURES COMPLETED**

REVISIONS						SHEET NO. CU-2-12
NO.	BY:	DATE:	NO.	BY:	DATE:	
1			3			TOTAL SHEETS 14
2			4			

11/10/2023 R:\Structures\Culvert\Martin Mill Creek Culvert\Drawings\Final\R-2577A\_SMJ\_CU-2-12\_3300000.dgn opatel

DRAWN BY : T. K. BOYD DATE : NOV 2023  
 CHECKED BY : B. D. KLAPPENBACH DATE : NOV 2023  
 DESIGN ENGINEER OF RECORD : O. J. PAITEL DATE : NOV 2023