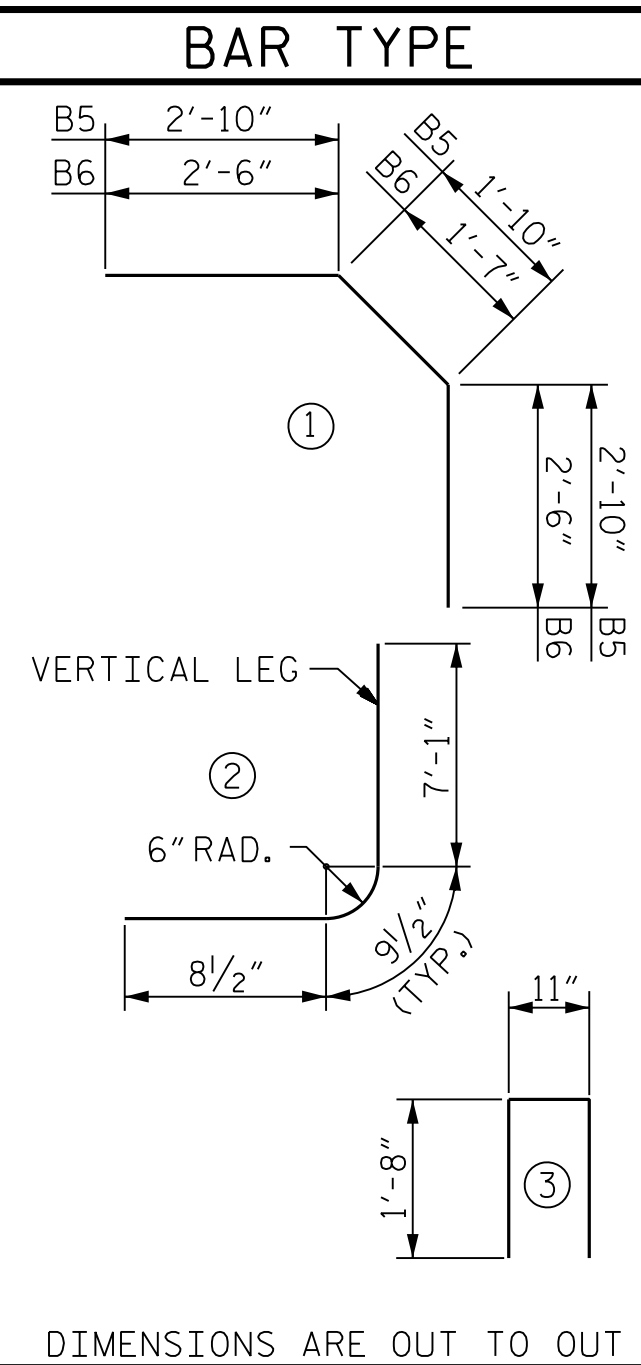


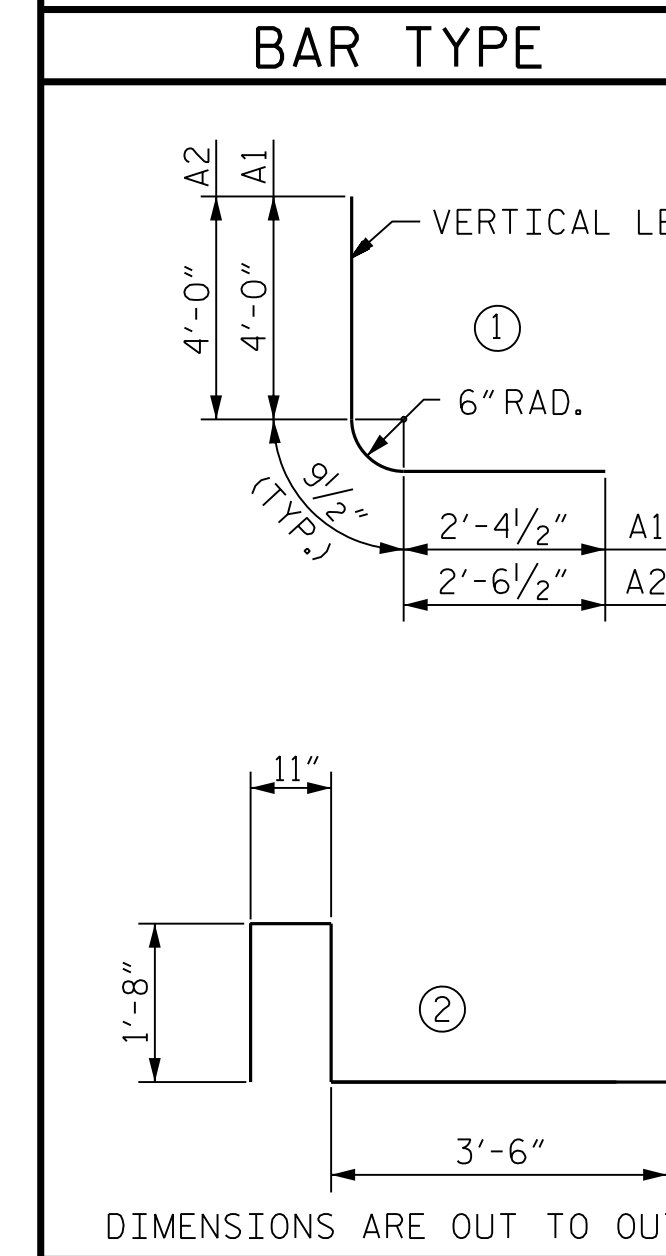
BILL OF MATERIAL - HEADWALL & FOOTING - STAGE I					
BAR	NO.	SIZE	TYPE	LENGTH	WEIGHT
B1	6	#6	STR.	11'-7"	104
B2	8	#4	STR.	4'-4"	23
B3	8	#4	STR.	3'-0"	16
B4	2	#4	STR.	11'-7"	15
B5	8	#5	1	7'-6"	63
B6	8	#5	1	6'-7"	55
D1	10	#6	STR.	3'-0"	45
N1	8	#5	2	8'-7"	72
T1	44	#4	STR.	3'-1"	91
T2	4	#4	STR.	3'-2"	8
T3	4	#4	STR.	3'-5"	9
T4	2	#4	STR.	3'-11"	5
T5	4	#4	STR.	15'-5"	41
T6	10	#4	STR.	14'-0"	94
V1	8	#4	STR.	6'-4"	34
U1	5	#5	3	4'-3"	22
REINFORCING STEEL					697 LBS.
CLASS A CONCRETE					6.0 C.Y.



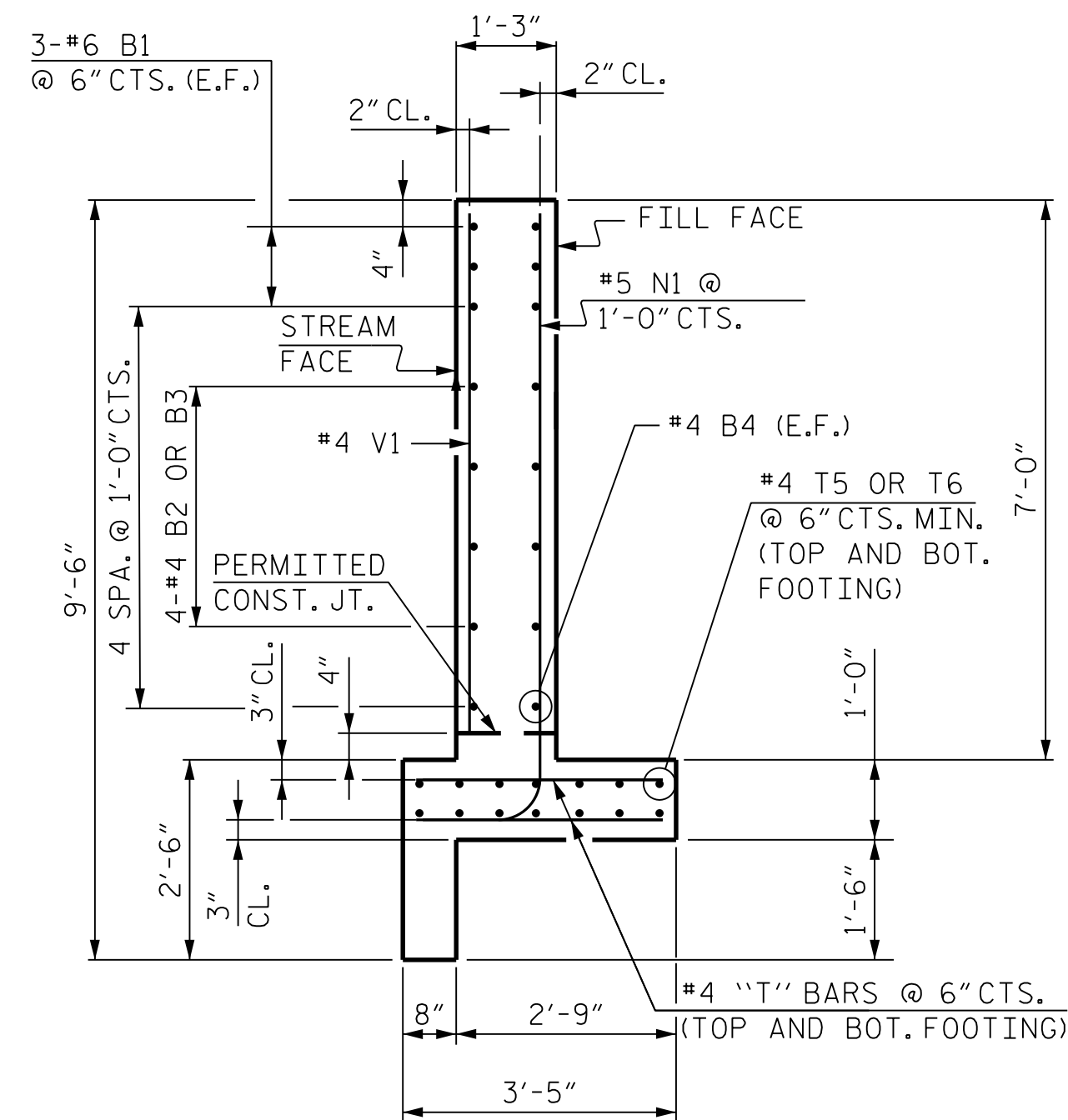
DIMENSIONS ARE OUT TO OUT

SPlice LENGTHS		
BAR	SIZE	SPlice LENGTHS
B4	#5	2'-4"
B5	#5	2'-4"
C1	#4	2'-5"

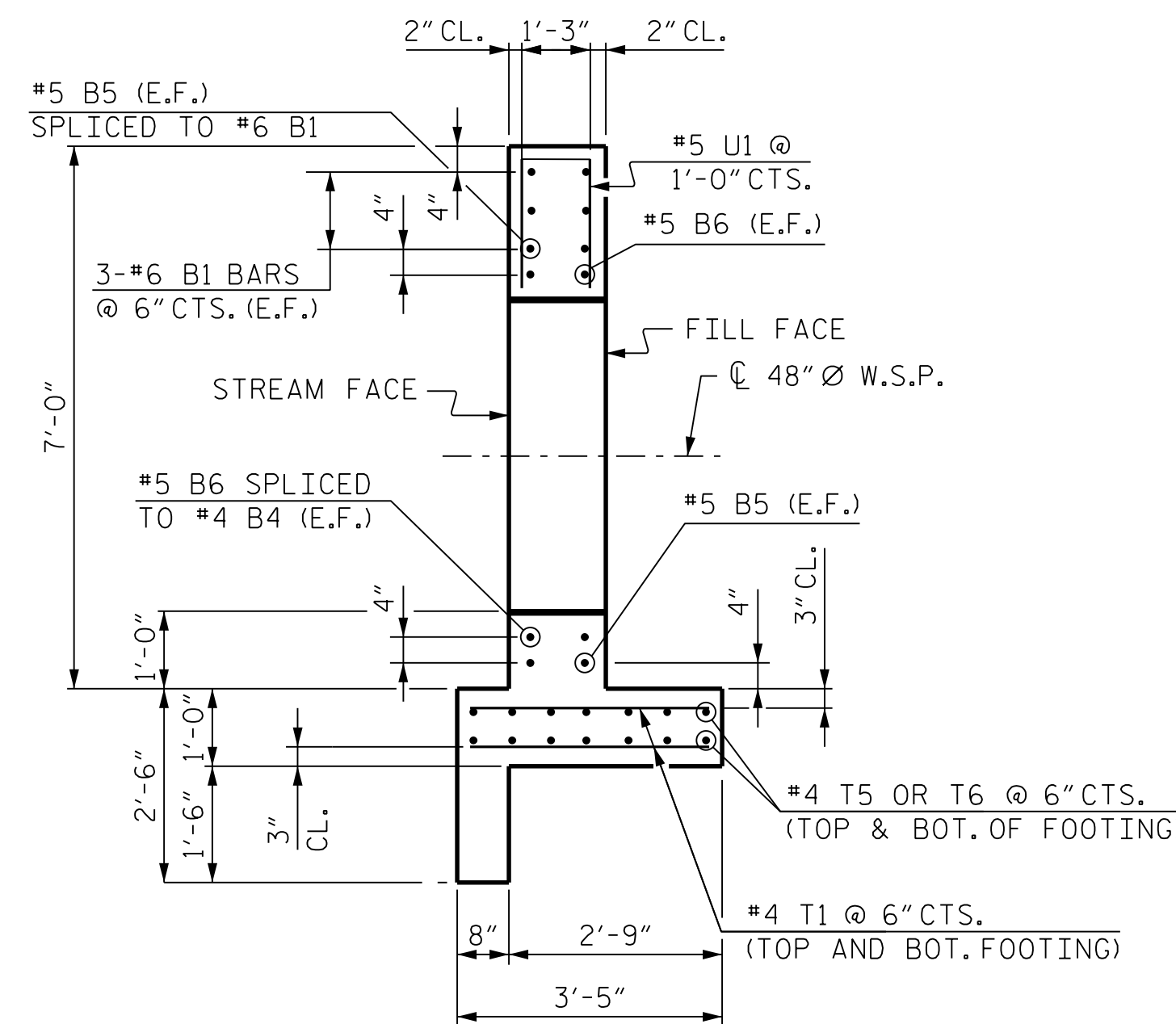
BILL OF MATERIAL - CULVERT - STAGE I					
BAR	NO.	SIZE	TYPE	LENGTH	WEIGHT
A1	244	#5	1	7'-2"	1,824
A2	28	#5	1	7'-4"	214
A100	66	#5	STR.	6'-0"	413
A101	1	#5	STR.	5'-5"	6
A102	1	#5	STR.	4'-3"	4
A103	1	#5	STR.	3'-2"	3
A104	1	#5	STR.	2'-1"	2
A105	2	#5	STR.	2'-0"	4
A200	66	#5	STR.	6'-0"	413
A201	1	#5	STR.	5'-5"	6
A202	1	#5	STR.	4'-3"	4
A203	1	#5	STR.	3'-2"	3
A204	1	#5	STR.	2'-1"	2
A205	2	#5	STR.	2'-0"	4
B1	138	#4	STR.	6'-8"	615
C1	56	#4	STR.	29'-10"	1,116
D1	18	#6	STR.	2'-6"	68
G1	4	#4	STR.	7'-7"	20
L1	9	#4	2	7'-9"	47
S1	6	#8	STR.	7'-7"	121
S2	6	#8	STR.	6'-0"	96
REINFORCING STEEL					4,985 LBS.
CLASS A CONCRETE					39.7 C.Y.



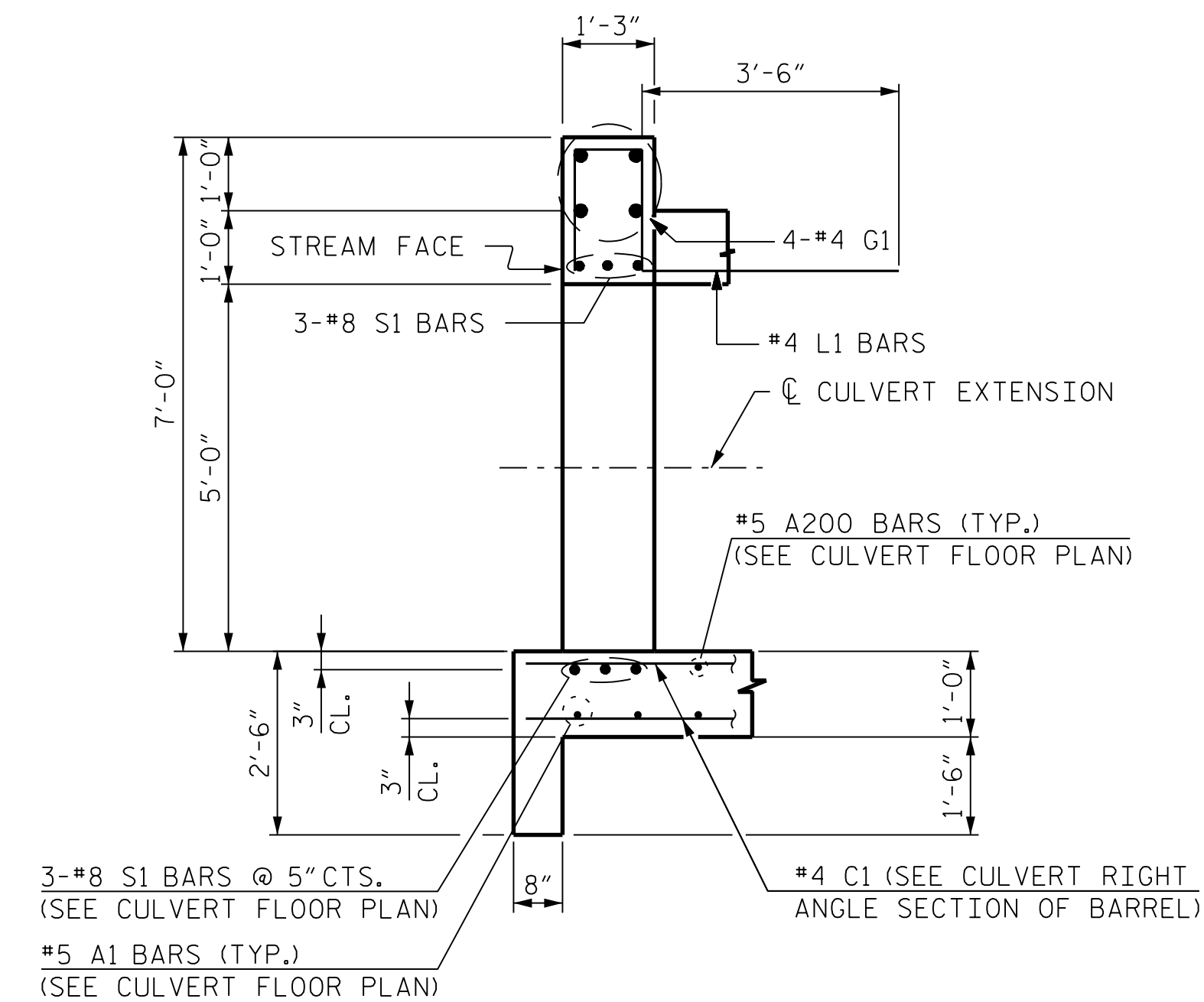
DIMENSIONS ARE OUT TO OUT



SECTION H-H  
HEADWALL



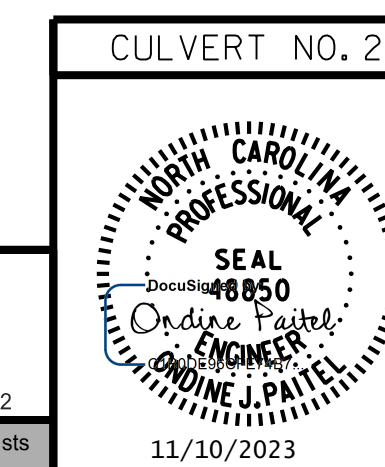
SECTION I-I  
AT 48" Ø W.S.P.



SECTION J-J  
AT CULVERT EXTENSION

PROJECT NO. R-2577A  
FORSYTH COUNTY  
STATION: 229+09.00 -L2-

SHEET 8 OF 14



STATE OF NORTH CAROLINA  
DEPARTMENT OF TRANSPORTATION  
RALEIGH

**BILL OF MATERIAL  
STAGE I**

REVISIONS						SHEET NO.
NO.	BY:	DATE:	NO.	BY:	DATE:	CU_2-8
1			3			TOTAL SHEETS
2			4			14

**RK&K**  
P: (919) 878-9560  
8601 Six Forks Road, Forum 1 Suite 700  
Raleigh, North Carolina 27615 | NC License No. F-0112  
Engineers | Construction Managers | Planners | Scientists  
www.rkk.com  
Responsive People | Creative Solutions

DRAWN BY : T. K. BOYD DATE : NOV 2023  
CHECKED BY : B. D. KLAPPENBACH DATE : NOV 2023  
DESIGN ENGINEER OF RECORD : O. J. PAITEL DATE : NOV 2023

R:\Structures\Culvert\Martin\_MillCreek\Culvert\Drawings\SMU\_CU\_2-8\_330000.dgn

**DOCUMENT NOT CONSIDERED FINAL  
UNLESS ALL SIGNATURES COMPLETED**