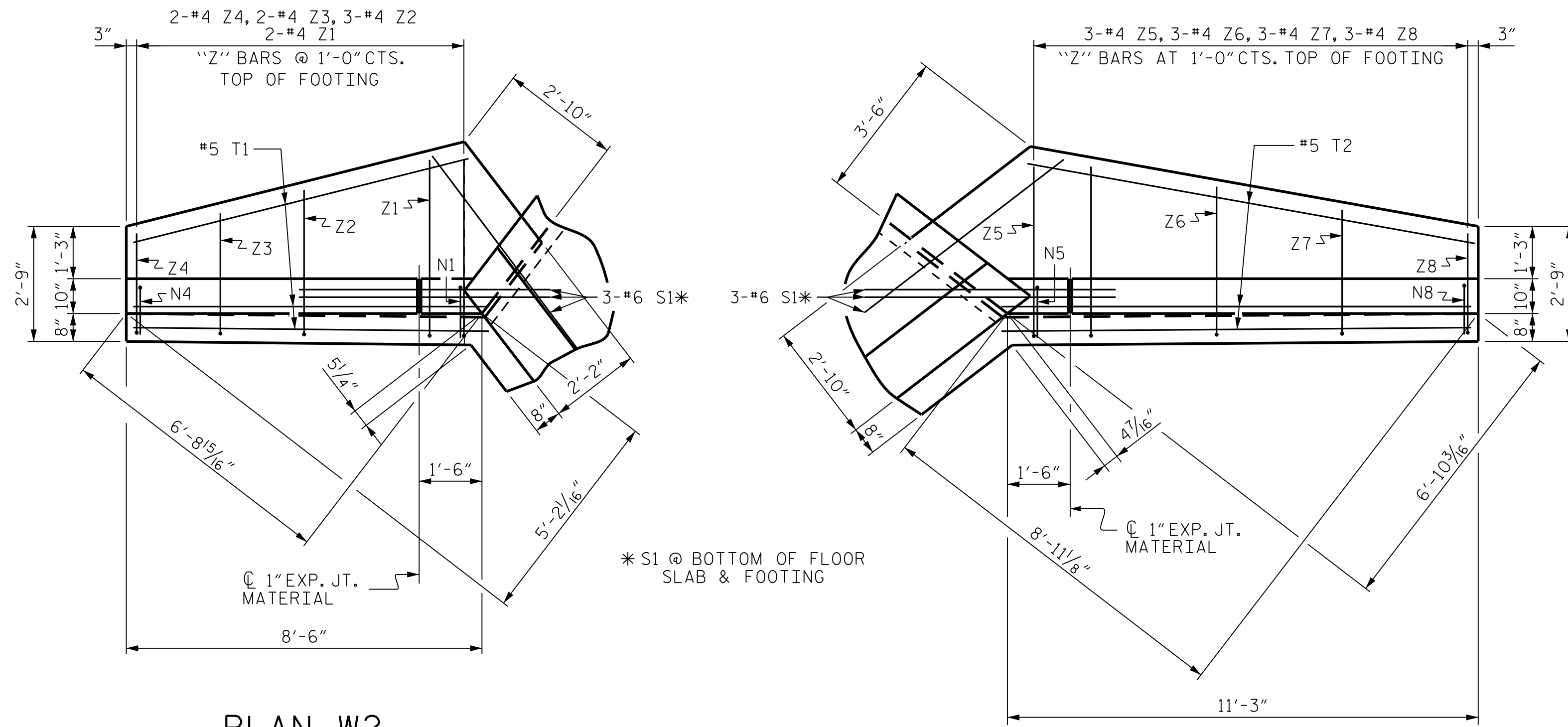


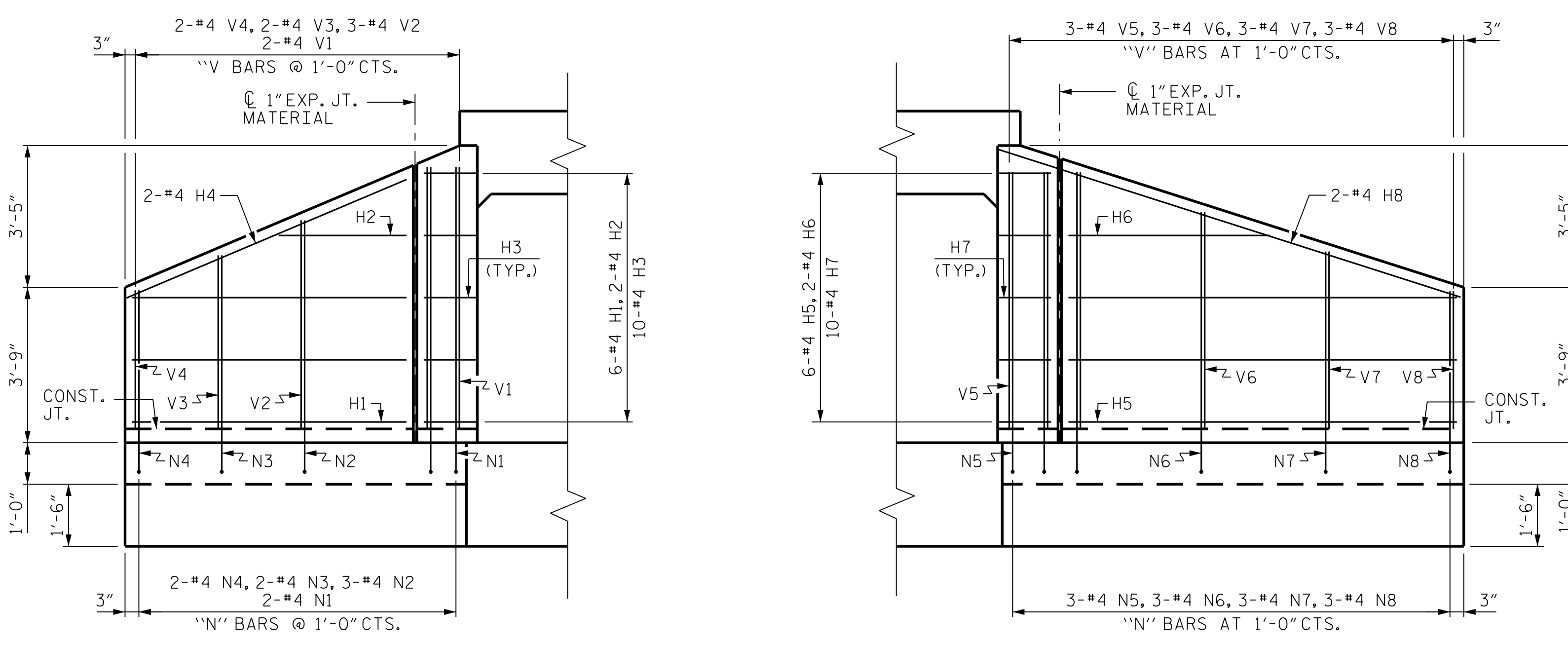
R:\Structures\Culvert\TUT Lowery Mill Creek Culvert\Final\RDGN\Final\R-2577A_SMU_CU_1-8_330000.dgn



PLAN W2

PLAN W1

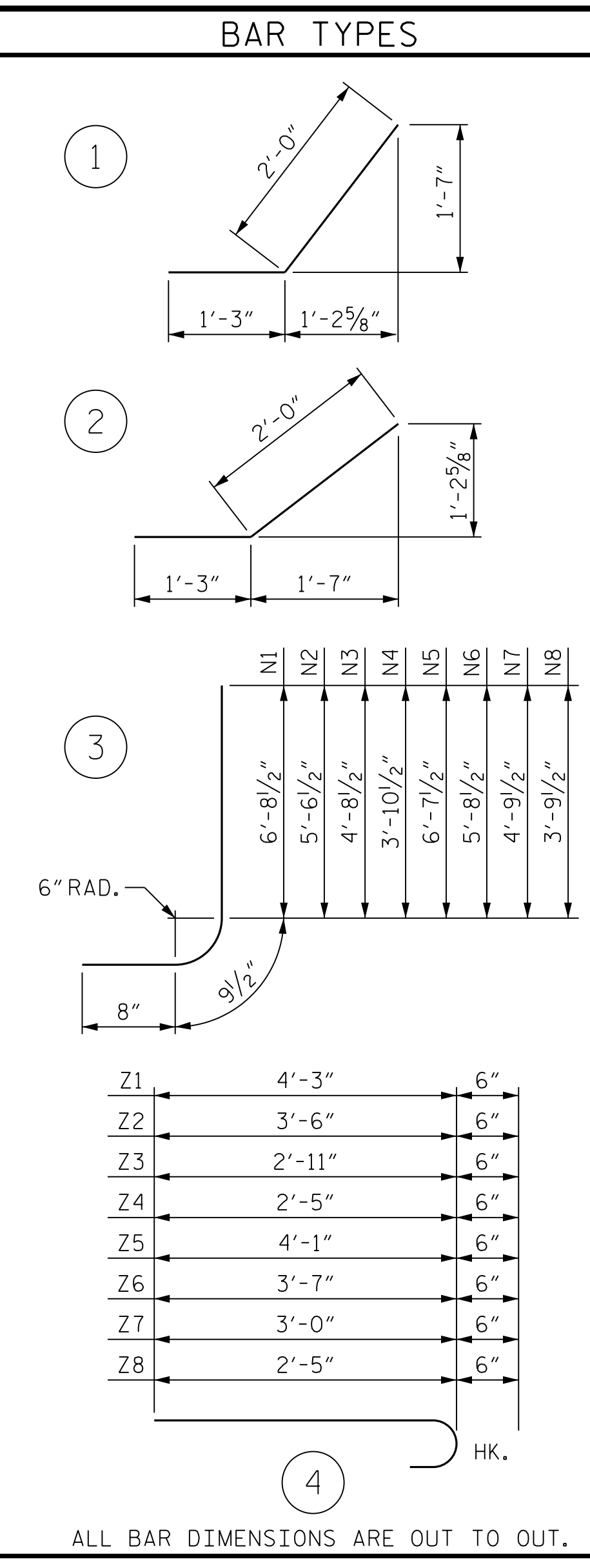
STAGE I



ELEVATION W2

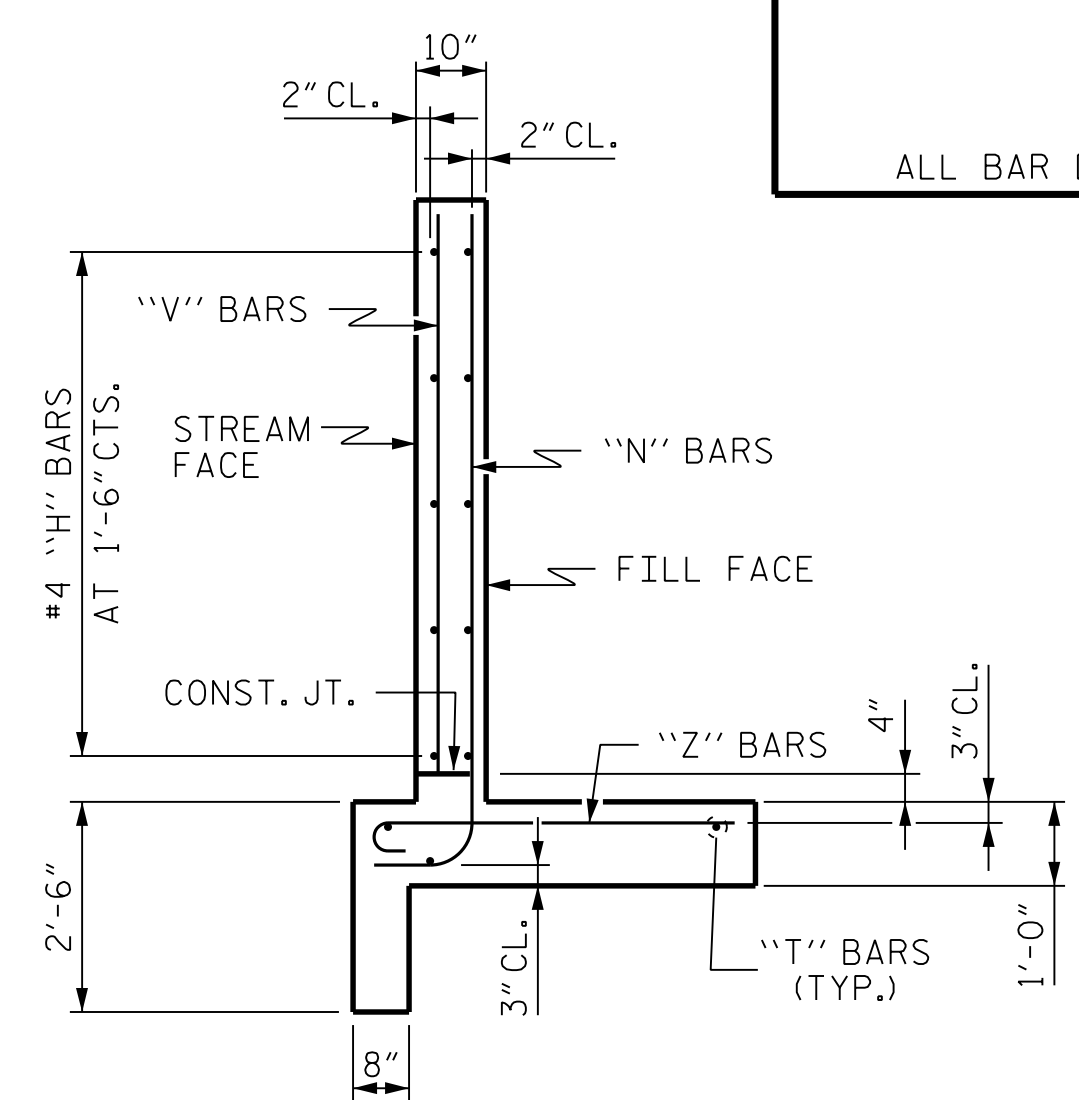
ELEVATION W1

STAGE I



BILL OF MATERIAL STAGE I					
BAR	NO.	SIZE	TYPE	LENGTH	WEIGHT
H1	6	#4	STR.	6'-7"	27
H2	2	#4	STR.	3'-1"	4
H3	10	#4	1	3'-3"	22
H4	2	#4	STR.	7'-1"	10
H5	6	#4	STR.	9'-4"	38
H6	2	#4	STR.	4'-10"	7
H7	10	#4	2	3'-3"	22
H8	2	#4	STR.	9'-9"	13
N1	2	#4	3	8'-2"	11
N2	3	#4	3	7'-0"	14
N3	2	#4	3	6'-2"	8
N4	2	#4	3	5'-4"	7
N5	3	#4	3	8'-1"	16
N6	3	#4	3	7'-2"	15
N7	3	#4	3	6'-3"	13
N8	3	#4	3	5'-3"	11
S1	6	#6	STR.	6'-0"	54
T1	3	#5	STR.	8'-6"	27
T2	3	#5	STR.	11'-3"	35
V1	2	#4	STR.	6'-1"	8
V2	3	#4	STR.	4'-11"	10
V3	2	#4	STR.	4'-1"	6
V4	2	#4	STR.	3'-4"	5
V5	3	#4	STR.	6'-0"	12
V6	3	#4	STR.	5'-1"	10
V7	3	#4	STR.	4'-2"	9
V8	3	#4	STR.	3'-3"	7
Z1	2	#4	4	4'-9"	7
Z2	3	#4	4	4'-0"	8
Z3	2	#4	4	3'-5"	5
Z4	2	#4	4	2'-11"	4
Z5	3	#4	4	4'-7"	9
Z6	3	#4	4	4'-1"	8
Z7	3	#4	4	3'-6"	7
Z8	3	#4	4	2'-11"	6

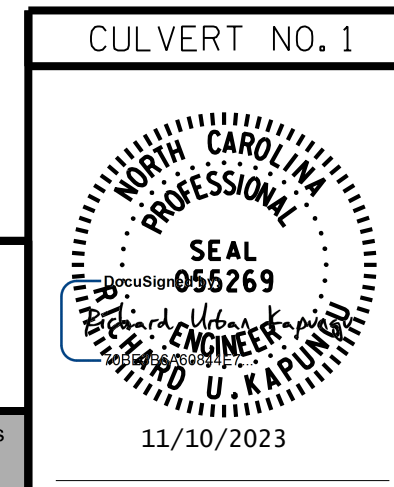
REINFORCING STEEL FOR 2 WINGS		475 LBS
CLASS A CONCRETE 2 WINGS		7.1 CY
1 HEADWALLS		0.4 CY
1 END CURTAIN WALLS		1.0 CY
TOTAL		8.5 CY



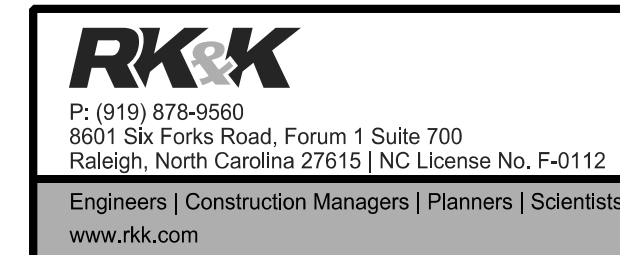
TYPICAL WING SECTION

PROJECT NO. R-2577A
 FORSYTH COUNTY
 STATION: 107+57.00 -L-

SHEET 8 OF 9



STATE OF NORTH CAROLINA
 DEPARTMENT OF TRANSPORTATION
 RALEIGH
STANDARD WINGS
 FOR
 CONCRETE BOX CULVERT
 H = 6'-0" SLOPE = 2:1
 STAGE I



**DOCUMENT NOT CONSIDERED FINAL
 UNLESS ALL SIGNATURES COMPLETED**

REVISIONS					
NO.	BY:	DATE:	NO.	BY:	DATE:
1			3		
2			4		

DRAWN BY : B. H. GONFA DATE : NOV 2023
 CHECKED BY : O. J. PAITEL DATE : NOV 2023
 DESIGN ENGINEER OF RECORD : R. U. KAPUNGU DATE : NOV 2023

SHEET NO.
 CU_1-8
 TOTAL SHEETS
 9