

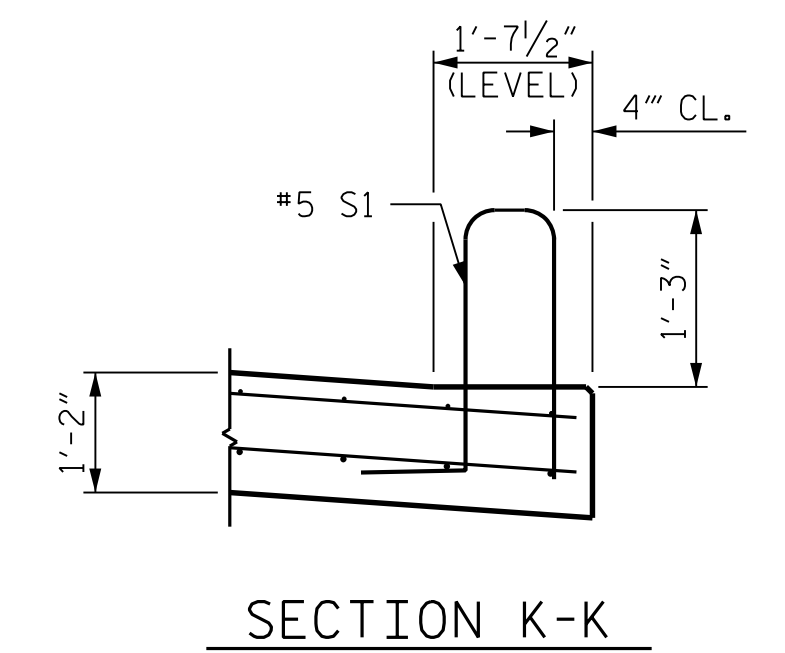
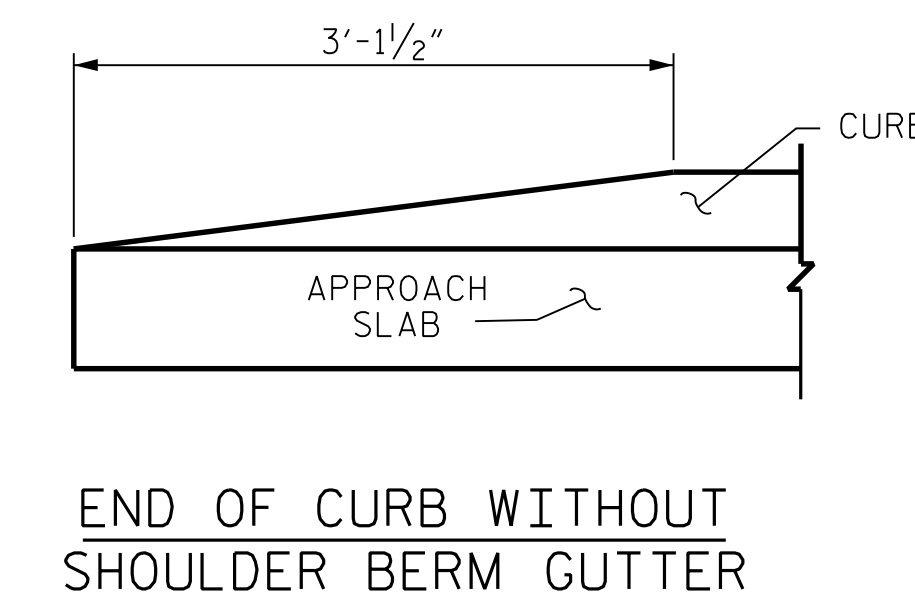
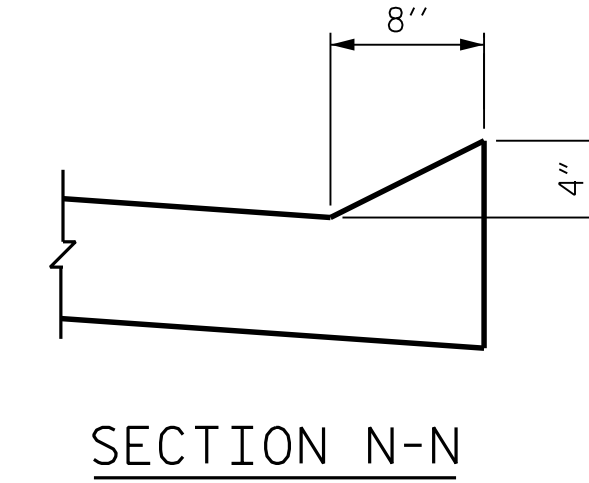
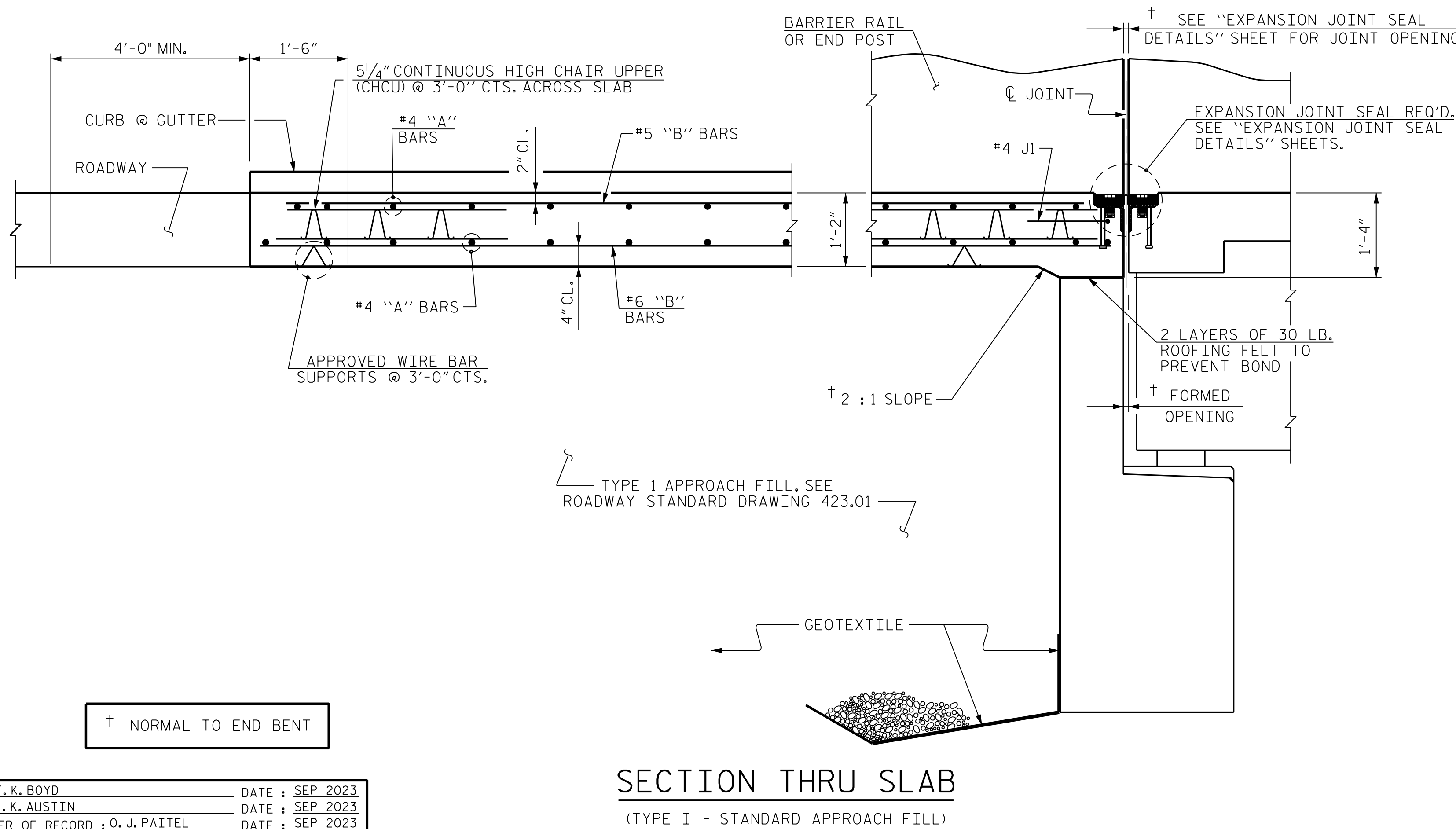
NOTES:

- FOR BRIDGE APPROACH FILL INCLUDING GEOTEXTILE, 6" Ø DRAINAGE PIPE, AND SELECT MATERIAL BACKFILL, SEE ROADWAY PLANS.
- GEOTEXTILE SHALL BE TYPE 1 IN ACCORDANCE WITH THE STANDARD SPECIFICATIONS SECTION 1056.
- SELECT MATERIAL BACKFILL (CLASS V OR CLASS VI) SHALL BE IN ACCORDANCE WITH STANDARD SPECIFICATIONS SECTION 1016.
- SELECT MATERIAL BACKFILL IS TO BE CONTINUOUS ALONG FILL FACE OF BACKWALL FROM OUTSIDE EDGE TO OUTSIDE EDGE OF APPROACH SLAB.
- APPROACH SLAB SHALL NOT BE CONSTRUCTED PRIOR TO COMPLETION OF THE BRIDGE DECK.
- FOR THE 6" Ø DRAINAGE PIPE OUTLET(S), SEE ROADWAY STANDARD DRAWINGS.
- AREA BETWEEN THE WINGWALL AND APPROACH SLAB SHALL BE GRADED TO DRAIN THE WATER AWAY FROM THE FILL FACE OF THE BRIDGE AND SHALL BE PAVED. SEE ROADWAY PLANS.
- FOR EXPANSION JOINT SEALS, SEE SPECIAL PROVISIONS.
- THE QUANTITY OF #4 J1 BARS ON THE BILL OF MATERIAL IS BASED ON 1'-0" CENTERS. J1 BARS SHALL BE PLACED AT EACH VERTICAL STUD ANCHOR BOLT. IN THE EVENT THAT THE NUMBER OF VERTICAL STUD ANCHORS EXCEEDS THE NUMBER OF J1 BARS SPECIFIED, ADDITIONAL J1 BARS WILL NOT BE REQUIRED.

SPLICE LENGTHS		
BAR SIZE	EPOXY COATED	UNCOATED
#4	1'-11"	1'-7"
#5	2'-5"	2'-0"
#6	3'-7"	2'-5"

BILL OF MATERIAL

APPROACH SLAB AT EB 1					
BAR	NO.	SIZE	TYPE	LENGTH	WEIGHT
*A1	25	#4	STR	42'-9"	714
A2	26	#4	STR	42'-9"	742
*B1	72	#5	STR	24'-2"	1,815
B2	72	#6	STR	24'-8"	2,668
*J1	42	#4	1	1'-5"	40
REINFORCING STEEL					3,410 LBS.
*EPOXY COATED REINFORCING STEEL					2,569 LBS.
CLASS AA CONCRETE					40.7 C.Y.
APPROACH SLAB AT EB 2					
BAR	NO.	SIZE	TYPE	LENGTH	WEIGHT
*A1	25	#4	STR	42'-9"	714
A2	26	#4	STR	42'-9"	742
*B1	72	#5	STR	24'-2"	1,815
B2	72	#6	STR	24'-8"	2,668
*J1	42	#4	1	1'-5"	40
REINFORCING STEEL					3,410 LBS.
*EPOXY COATED REINFORCING STEEL					2,569 LBS.
CLASS AA CONCRETE					40.7 C.Y.
BAR TYPES					



CURB DETAILS

RK&K
 P: (919) 878-9560
 8601 Six Forks Road, Forum 1 Suite 700
 Raleigh, North Carolina 27615 | NC License No. F-0112
 Engineers | Construction Managers | Planners | Scientists
 www.rk.com
 Responsive People | Creative Solutions

BRIDGE NO. 330814

SEAL
 48850
 Ordine Patel
 ENGINEER
 11/10/2023

PROJECT NO. R-2577A
 FORSYTH COUNTY
 STATION: 140+39.50 -L-

SHEET 1 OF 2

STATE OF NORTH CAROLINA DEPARTMENT OF TRANSPORTATION RALEIGH					
STANDARD BRIDGE APPROACH SLAB FOR FLEXIBLE PAVEMENT RIGHT LANE					
REVISIONS					
NO.	BY:	DATE:	NO.	BY:	DATE:
1			3		
2			4		

SHEET NO. SR-33
 TOTAL SHEETS 34

tboyd 11/10/2023 R:\Structures\BRIDGE\RightBridge\GN\FINAL\R2577A_SMU_ASI_330814.dgn

DRAWN BY : T.K. BOYD DATE : SEP 2023
 CHECKED BY : L.K. AUSTIN DATE : SEP 2023
 DESIGN ENGINEER OF RECORD : O.J. PAITEL DATE : SEP 2023

**DOCUMENT NOT CONSIDERED FINAL
 UNLESS ALL SIGNATURES COMPLETED**