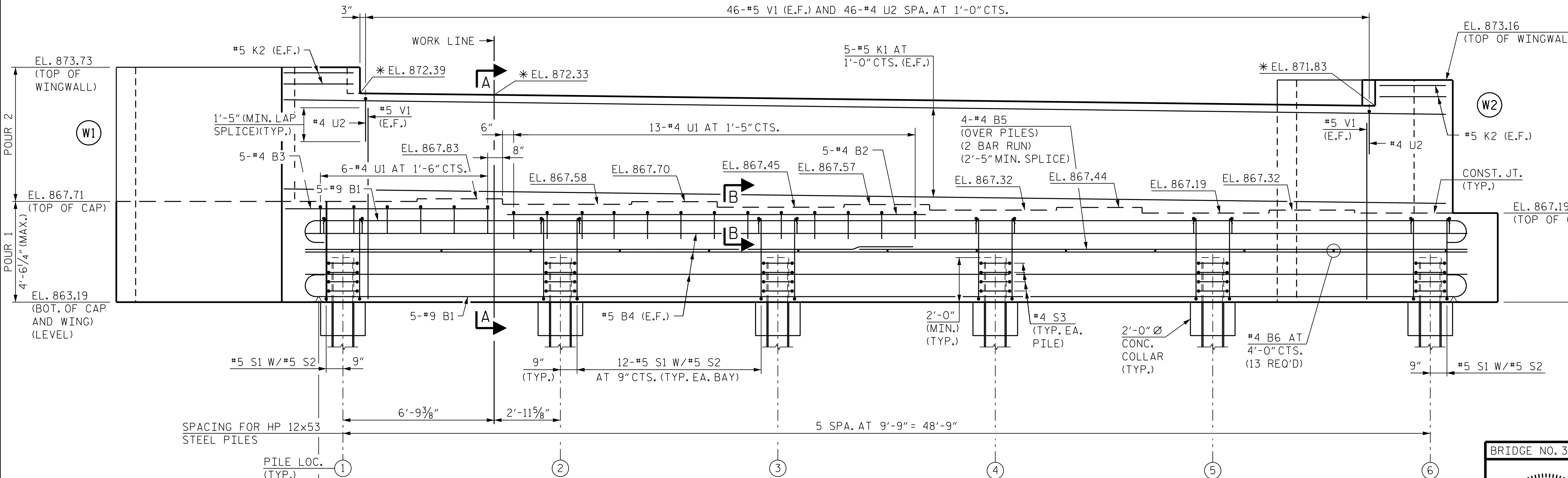


PLAN

**NOTES:**  
 FOR SECTION A-A AND SECTION B-B, SEE SHEET 3 OF 3.  
 FOR PILE SPLICE DETAILS, SEE END BENT 1 SHEET 3 OF 3 (SR-26).  
 FOR TEMPORARY DRAINAGE DETAILS, SEE SHEET 3 OF 3.  
 THE TOP SURFACE OF THE END BENT CAP, EXCEPT THE BRIDGE SEAT BUILD-UPS, SHALL BE SLOPED TRANSVERSELY FROM THE FILL FACE TO THE BACK FACE AT THE RATE OF 2%.  
 THE TOP SURFACE AREAS OF THE END BENT CAPS SHALL BE CURED IN ACCORDANCE WITH THE STANDARD SPECIFICATIONS EXCEPT THE MEMBRANE CURING COMPOUND METHOD SHALL NOT BE USED.  
 BACKWALL SHALL BE PLACED BEFORE APPLYING THE EPOXY PROTECTIVE COATING.  
 STIRRUPS IN CAP MAY BE SHIFTED SLIGHTLY TO AVOID CONFLICT WITH ANCHOR BOLTS.  
 "V" BARS IN WINGWALLS SHALL BE PLACED 2" CLEAR FROM TOP OF WING.



ELEVATION

**LEGEND:**  
 I HP 12x53 VERTICAL STEEL PILES  
 I HP 12x53 STEEL PILES BATTERED 3:12

PROJECT NO. R-2577A  
 FORSYTH COUNTY  
 STATION: 140+39.50 -L-

SHEET 1 OF 3



BRIDGE NO. 330814

STATE OF NORTH CAROLINA DEPARTMENT OF TRANSPORTATION RALEIGH		SUBSTRUCTURE END BENT 2 PLAN AND ELEVATION RIGHT LANE	
REVISIONS			
NO.	BY:	DATE:	SHEET NO.
1			SR-29
2			TOTAL SHEETS 34
3			
4			

DRAWN BY : B. A. HAAG DATE : SEP 2023  
 CHECKED BY : L. K. AUSTIN DATE : SEP 2023  
 DESIGN ENGINEER OF RECORD : Q. J. PAITEL DATE : SEP 2023

t:boyd 11/10/2023 R:\Structures\BridgeRightBridge\Drawings\RightBent2\SMU\_E2A\_330814.dgn

**DOCUMENT NOT CONSIDERED FINAL UNLESS ALL SIGNATURES COMPLETED**