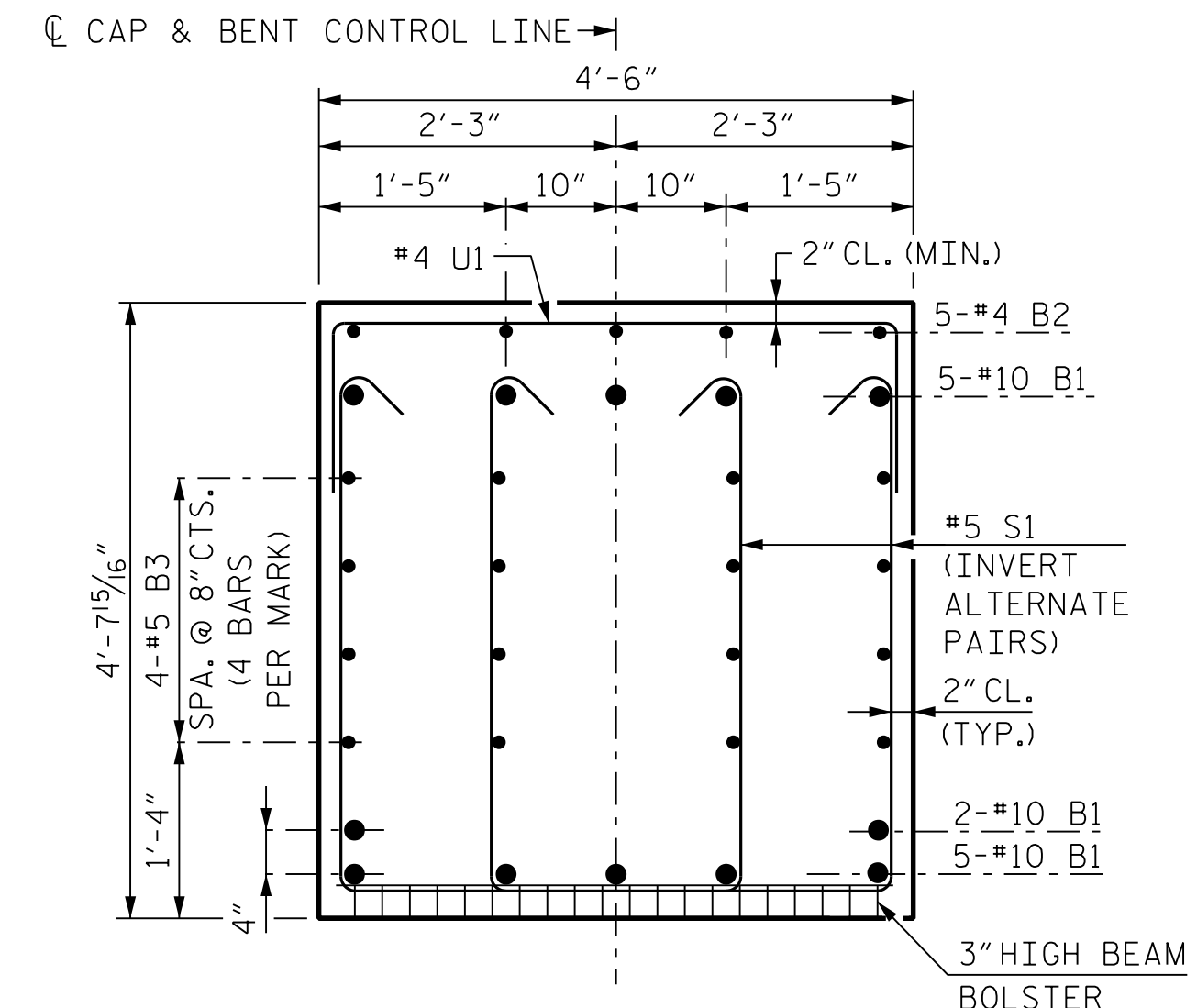
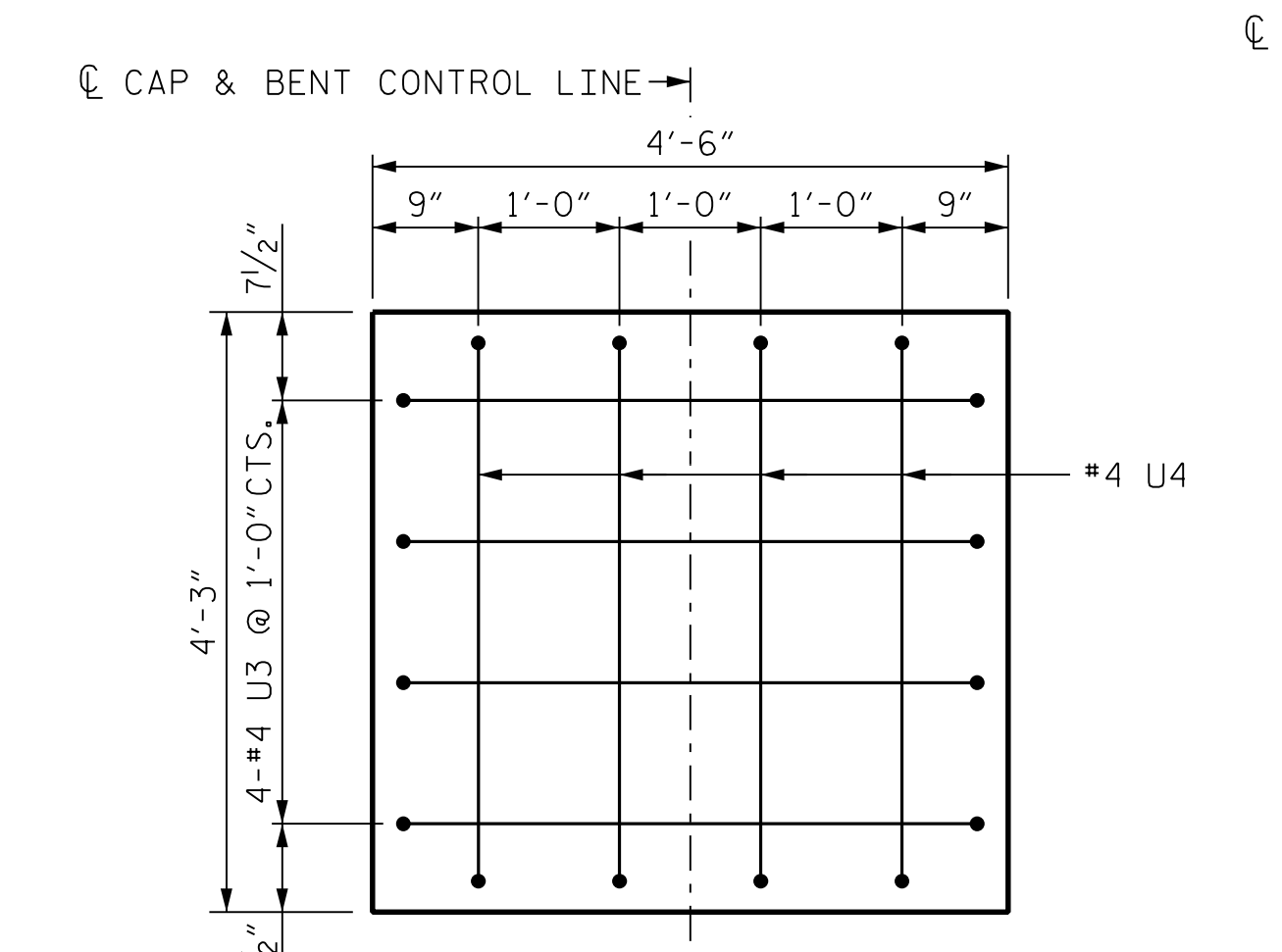


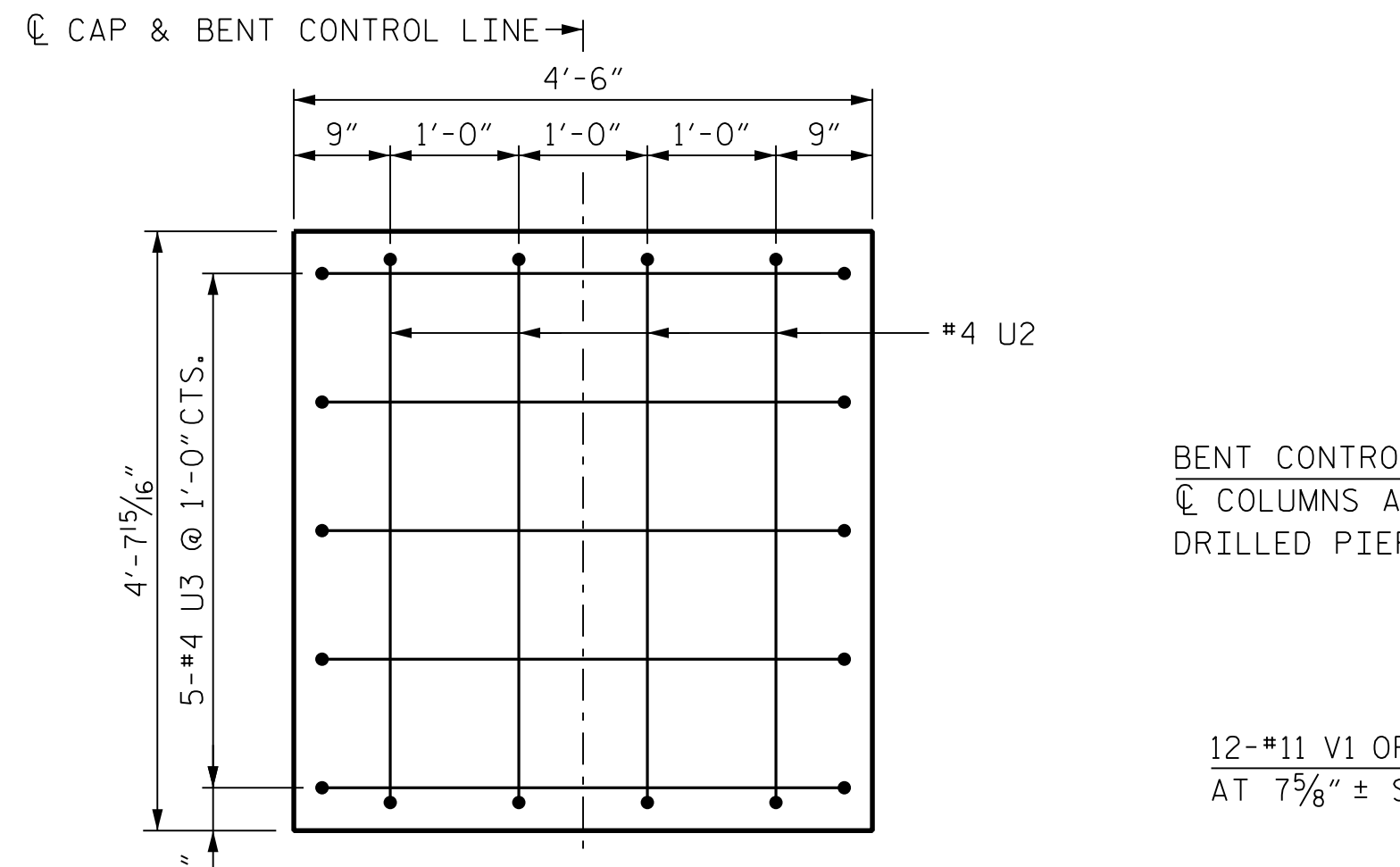
SECTION A-A



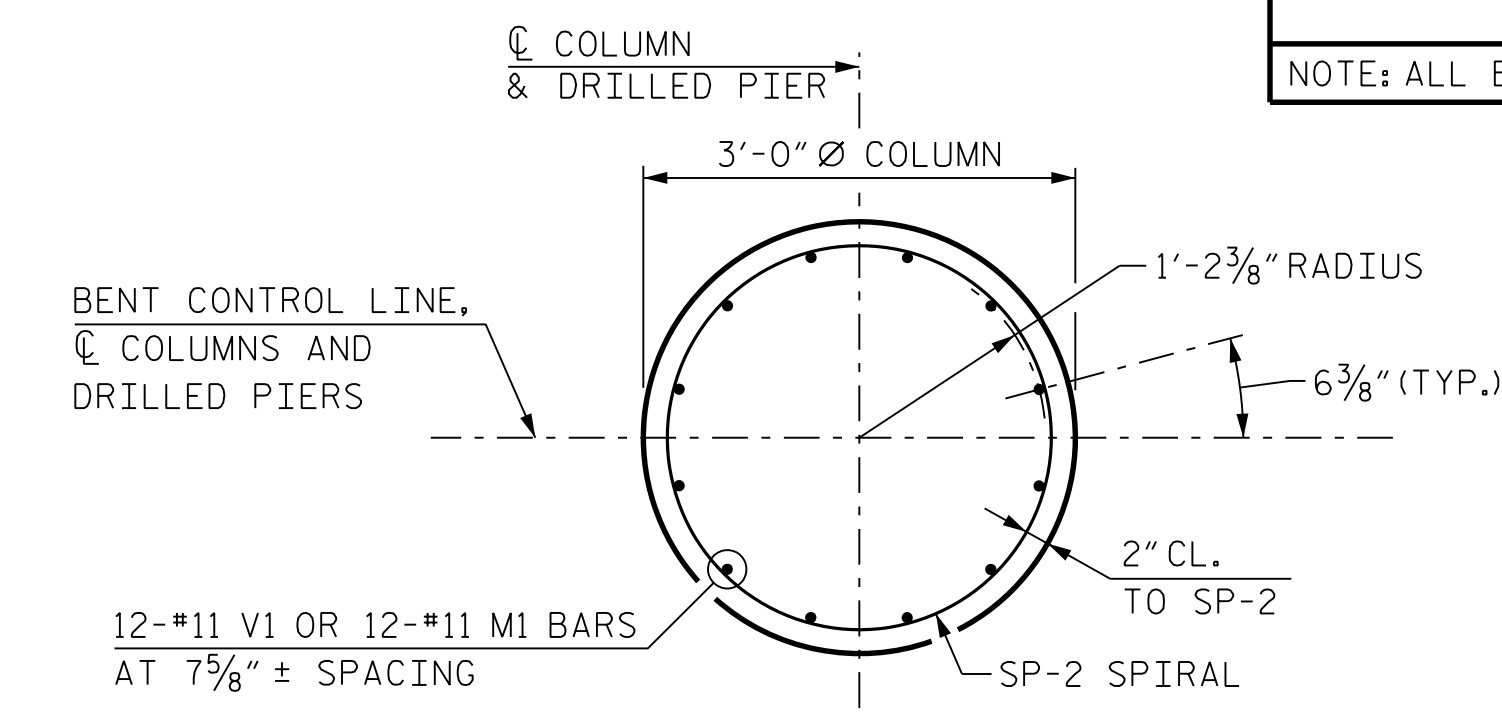
SECTION B-B



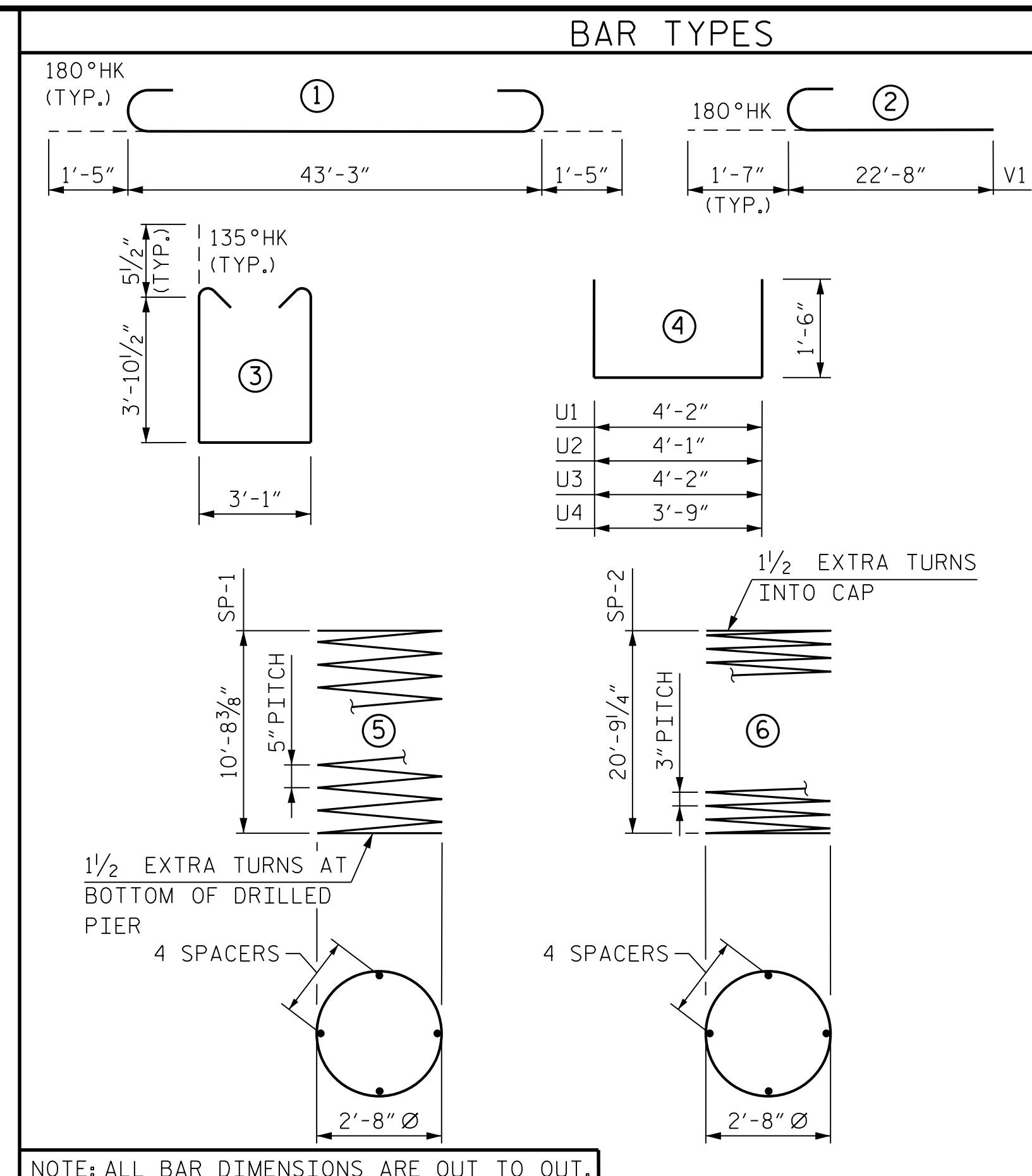
END OF CAP DETAIL (LEFT)



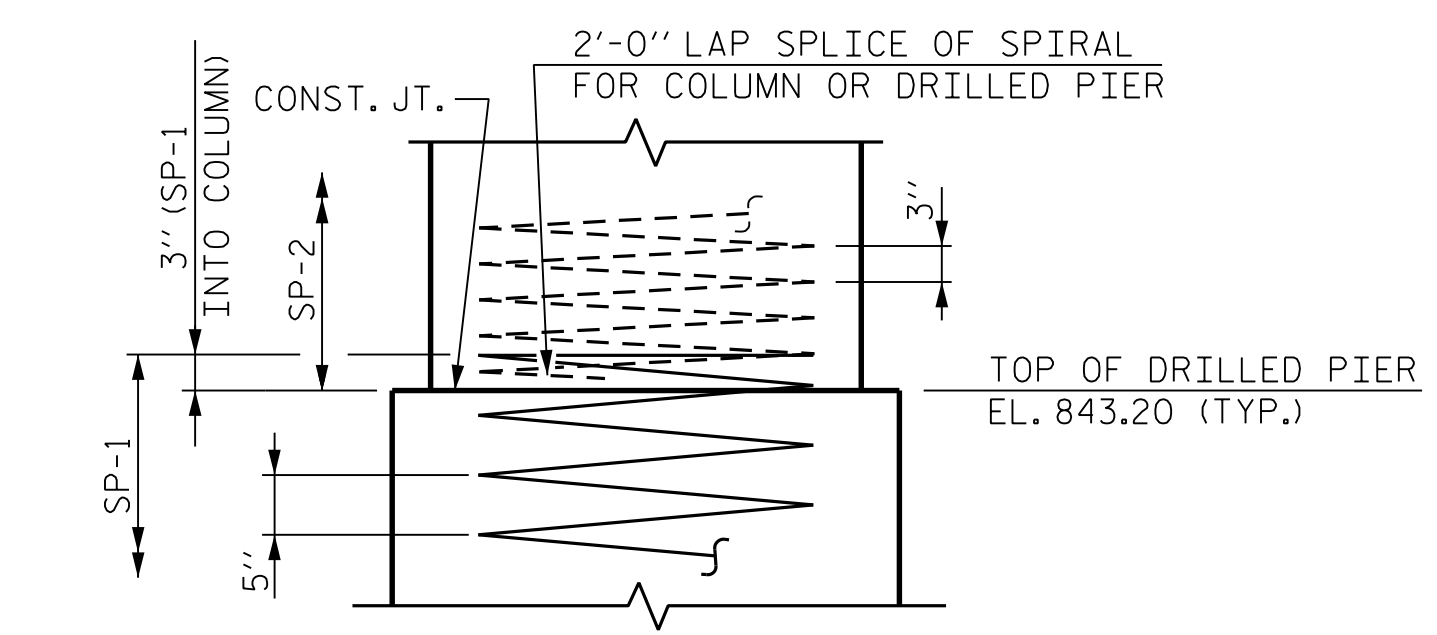
END OF CAP DETAIL (RIGHT)



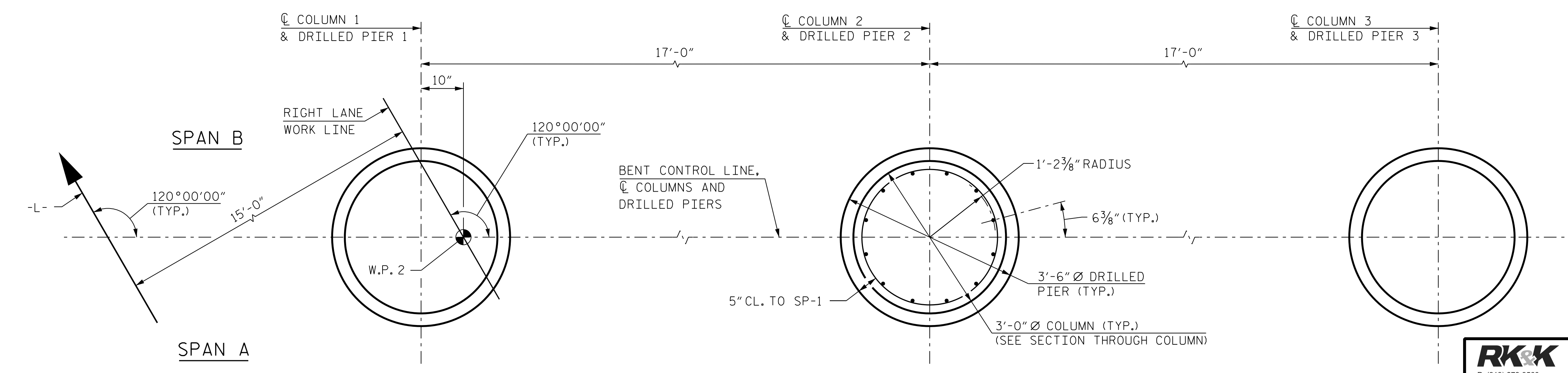
SECTION THROUGH COLUMN



NOTE: ALL BAR DIMENSIONS ARE OUT TO OUT.



CONSTRUCTION JOINT DETAIL



PLAN OF DRILLED PIERS AND COLUMNS

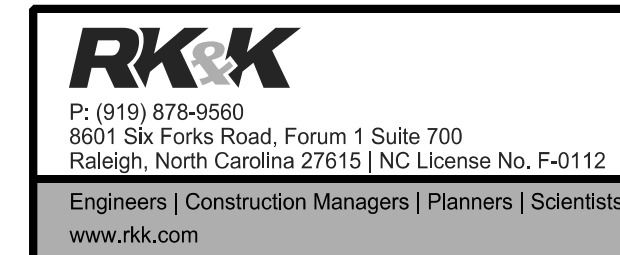
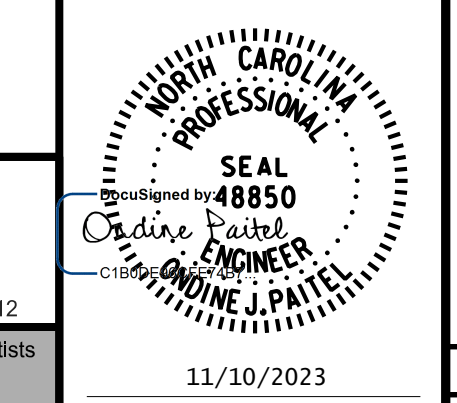
(DETAILS ARE TYPICAL FOR DRILLED PIER AND COLUMN)

BILL OF MATERIAL						
BENT 1						
BAR	NO.	SIZE	TYPE	LENGTH	WEIGHT	
B1	12	#10		46'-1"	2,380	
B2	5	#4	STR.	17'-2"	57	
B3	16	#5	STR.	43'-3"	722	
M1	36	#11	STR.	19'-0"	3,634	
S1	100	#5		11'-9"	1,226	
U1	53	#4		7'-2"	254	
U2	4	#4		7'-1"	19	
U3	9	#4		7'-2"	43	
U4	4	#4		6'-9"	18	
V1	36	#11		24'-3"	4,638	
REINFORCING STEEL				12,991 LBS.		
SP-1	3	*	5	227'-7"	712	
SP-2	3	**	6	701'-4"	1,405	
SPIRAL COLUMN REINFORCING STEEL				2,117 LBS.		
* SP-1 SPIRAL REINFORCING STEEL SHALL BE W31 OR D-31 COLD DRAWN WIRE OR #5 PLAIN OR DEFORMED BAR						
** SP-2 SPIRAL REINFORCING STEEL SHALL BE W20 OR D-20 COLD DRAWN WIRE OR #4 PLAIN OR DEFORMED BAR						
CLASS "A" CONCRETE						
POUR 2 (COLUMNS)				16.2 C.Y.		
POUR 3 (CAP)				32.3 C.Y.		
TOTAL				48.5 C.Y.		
DRILLED PIERS						
POUR 1 (DRILLED PIER CONCRETE)				12.0 C.Y.		

PROJECT NO. R-2577A  
 FORSYTH COUNTY  
 STATION: 140+39.50 -L-

SHEET 2 OF 2

BRIDGE NO. 330814



STATE OF NORTH CAROLINA  
 DEPARTMENT OF TRANSPORTATION  
 RALEIGH  
 SUBSTRUCTURE  
 BENT 1  
 DETAILS AND  
 BILL OF MATERIAL  
 RIGHT LANE

REVISIONS						SHEET NO.
NO.	BY:	DATE:	NO.	BY:	DATE:	SR-28
1			3			TOTAL SHEETS
2			4			34

DOCUMENT NOT CONSIDERED FINAL  
 UNLESS ALL SIGNATURES COMPLETED

11/10/2023 R:\Structures\BRIDGE\RightBridge\GNV\FINAL\R2577A\_SMU\_BIB\_330815.dgn tboyd

DRAWN BY : T.K. BOYD DATE : SEP 2023  
 CHECKED BY : L.K. AUSTIN DATE : SEP 2023  
 DESIGN ENGINEER OF RECORD : O.J. PAITEL DATE : SEP 2023