

**NOTES:**

THE BARRIER RAIL IN EACH SPAN SHALL NOT BE CAST UNTIL ALL SLAB CONCRETE IN THAT SPAN HAS BEEN CAST AND HAS REACHED A MINIMUM COMPRESSIVE STRENGTH OF 3,000 PSI.

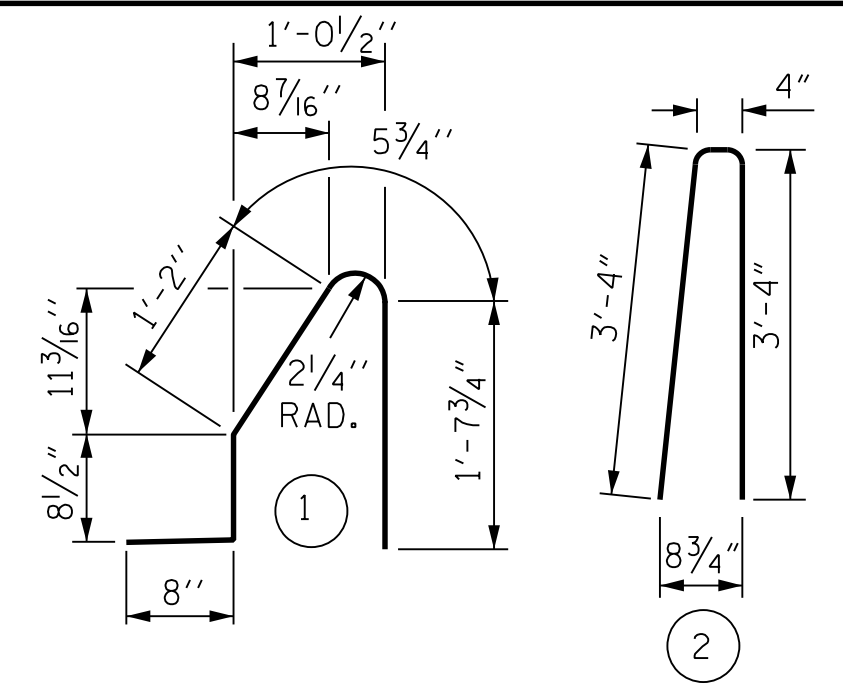
ALL REINFORCING STEEL IN BARRIER RAILS SHALL BE EPOXY COATED.

GROOVED CONTRACTION JOINTS, 1/2" IN DEPTH, SHALL BE TOOLED IN ALL EXPOSED FACES OF THE BARRIER RAIL AND IN ACCORDANCE WITH ARTICLE 825-10(B) OF THE STANDARD SPECIFICATIONS, THE CONTRACTION JOINT SHALL BE LOCATED AT EACH THIRD POINT BETWEEN BARRIER RAIL EXPANSION JOINTS. ONLY ONE CONTRACTION JOINT IS REQUIRED AT MIDPOINT OF BARRIER RAIL SEGMENTS LESS THAN 20 FEET IN LENGTH AND NO CONTRACTION JOINTS ARE REQUIRED FOR THOSE SEGMENTS LESS THAN 10 FEET IN LENGTH.

FOR END OF BARRIER RAIL DETAILS, SEE SHEET SR-34.

FOR BARRIER RAIL DETAILS ON APPROACH SLAB, SEE BRIDGE APPROACH SLAB SHEETS.

**BAR TYPES**

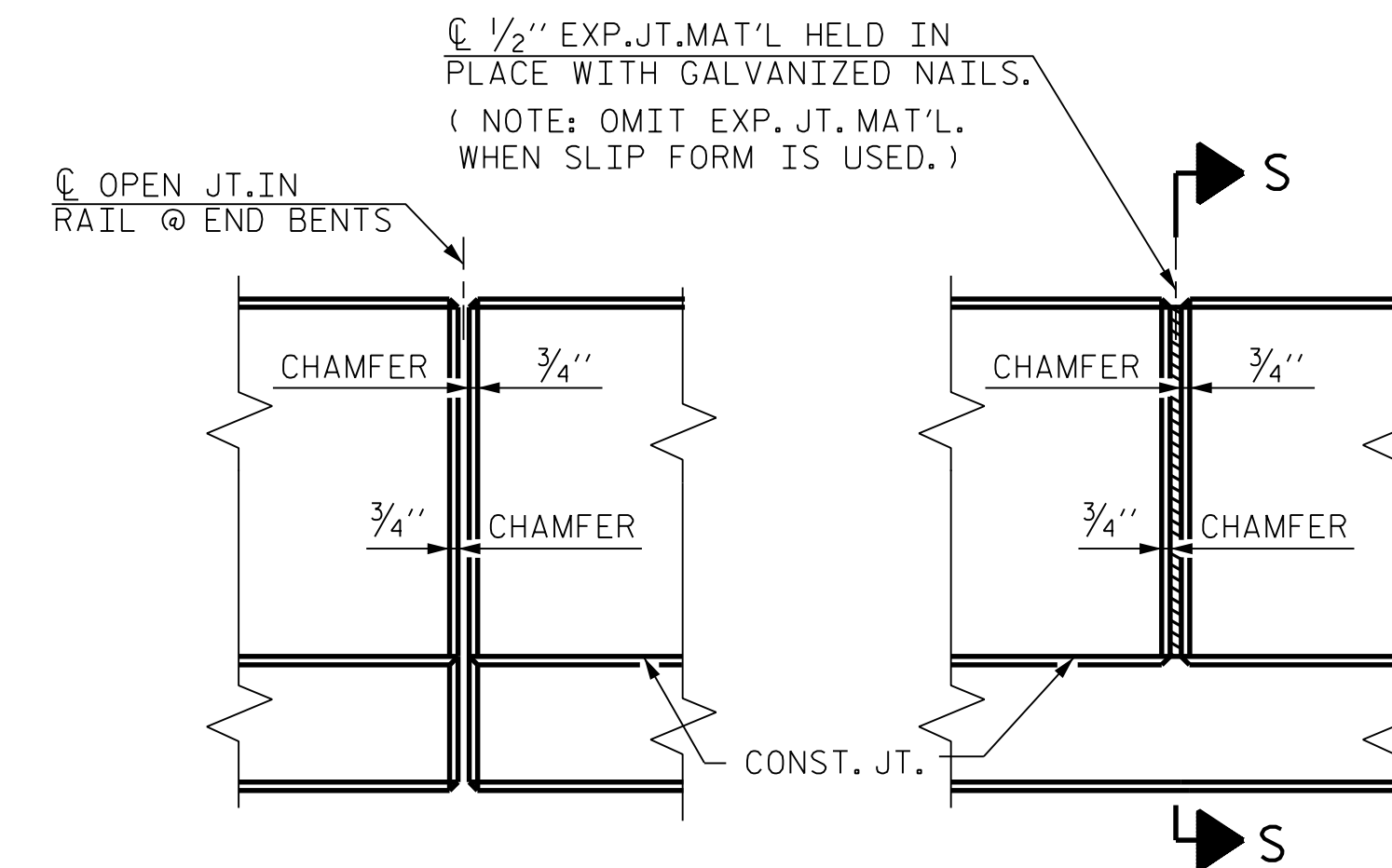
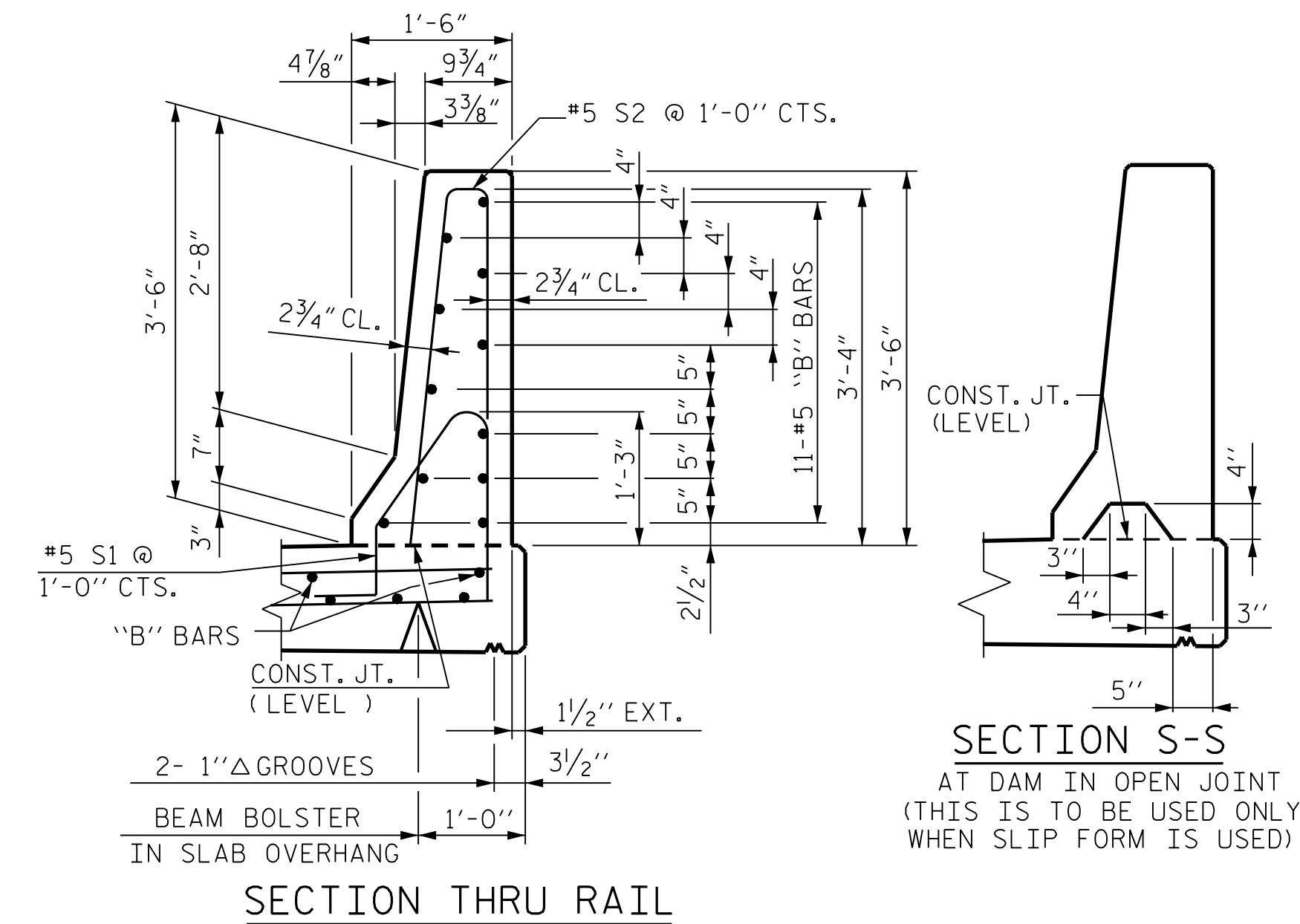


ALL BAR DIMENSIONS ARE OUT TO OUT

**BILL OF MATERIAL**

FOR CONCRETE BARRIER RAIL ONLY

BAR	NO.	SIZE	TYPE	LENGTH	WEIGHT
* B1	44	#5	STR.	12'-8"	581
* B2	88	#5	STR.	28'-8"	2,631
* B3	44	#5	STR.	16'-8"	765
* S1	334	#5	1	4'-8"	1,626
* S2	334	#5	2	7'-0"	2,439
* EPOXY COATED REINFORCING STEEL					8,042 LBS.
CLASS AA CONCRETE					45.6 CU. YDS.
CONCRETE BARRIER RAIL					334.90 LTN. FT.

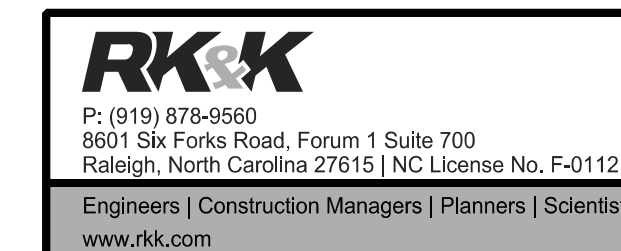
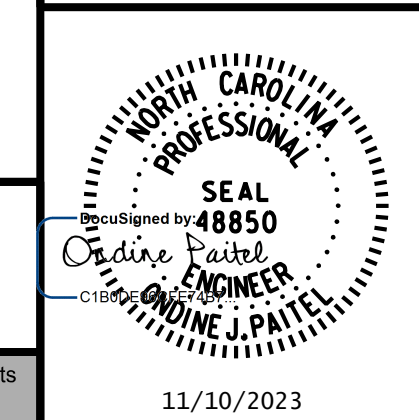


**BARRIER RAIL DETAILS**

PROJECT NO. R-2577A  
 FORSYTH COUNTY  
 STATION: 140+39.50 -L-

SHEET 2 OF 2

BRIDGE NO. 330814



STATE OF NORTH CAROLINA  
 DEPARTMENT OF TRANSPORTATION  
 RALEIGH  
 SUPERSTRUCTURE  
 CONCRETE BARRIER  
 RAIL &  
 BILL OF MATERIAL  
 RIGHT LANE

REVISIONS

NO.	BY:	DATE:	NO.	BY:	DATE:
1			3		
2			4		

SHEET NO.	SR-19
TOTAL SHEETS	34

**DOCUMENT NOT CONSIDERED FINAL  
 UNLESS ALL SIGNATURES COMPLETED**

11/10/2023 R:\Structures\Bridge\RightBridge\GN\FINAL\R2577A\_SMU\_BR2\_330814.dgn

DRAWN BY : T. K. BOYD DATE : SEP 2023  
 CHECKED BY : L. K. AUSTIN DATE : SEP 2023  
 DESIGN ENGINEER OF RECORD : Q. J. PAITEL DATE : SEP 2023

STD. NO. CBRT