

DEAD LOAD DEFLECTION AND CAMBER TABLE FOR GIRDERS - SPAN A																						
GIRDER		FORTIETH POINTS																				
		0	0.025	0.05	0.075	0.10	0.125	0.15	0.175	0.20	0.225	0.25	0.275	0.30	0.325	0.35	0.375	0.40	0.425	0.45	0.475	0.50
AG1 AND AG5	CAMBER (GIRDER ALONE IN PLACE) ↑	0.000	0.020	0.040	0.060	0.079	0.098	0.116	0.134	0.149	0.166	0.180	0.194	0.206	0.217	0.226	0.234	0.241	0.246	0.250	0.252	0.253
	DEFLECTION DUE TO SUPERIMPOSED D.L.* ↓	0.000	0.016	0.033	0.050	0.066	0.083	0.099	0.114	0.128	0.142	0.155	0.167	0.178	0.188	0.197	0.204	0.210	0.215	0.218	0.221	0.221
	FINAL CAMBER ↑	0"	1/16"	1/16"	1/8"	1/8"	3/16"	3/16"	1/4"	1/4"	5/16"	5/16"	5/16"	5/16"	5/16"	3/8"	3/8"	3/8"	3/8"	3/8"	3/8"	3/8"
		FORTIETH POINTS																				
		0.525	0.55	0.575	0.60	0.625	0.65	0.675	0.70	0.725	0.75	0.775	0.80	0.825	0.85	0.875	0.90	0.925	0.95	0.975	1.0	
	CAMBER (GIRDER ALONE IN PLACE) ↑	0.252	0.250	0.246	0.241	0.234	0.226	0.217	0.206	0.194	0.180	0.166	0.149	0.134	0.116	0.098	0.079	0.060	0.040	0.020	0.000	
DEFLECTION DUE TO SUPERIMPOSED D.L.* ↓	0.221	0.218	0.215	0.210	0.204	0.197	0.188	0.178	0.167	0.155	0.142	0.128	0.114	0.099	0.083	0.066	0.050	0.033	0.016	0.000		
FINAL CAMBER ↑	3/8"	3/8"	3/8"	3/8"	3/8"	3/8"	5/16"	5/16"	5/16"	5/16"	5/16"	1/4"	1/4"	3/16"	3/16"	1/8"	1/8"	1/16"	1/16"	0"		
	FORTIETH POINTS																					
	0	0.025	0.05	0.075	0.10	0.125	0.15	0.175	0.20	0.225	0.25	0.275	0.30	0.325	0.35	0.375	0.40	0.425	0.45	0.475	0.50	
AG2, AG3 AND AG4	CAMBER (GIRDER ALONE IN PLACE) ↑	0.000	0.020	0.040	0.060	0.079	0.098	0.116	0.134	0.149	0.166	0.180	0.194	0.206	0.217	0.226	0.234	0.241	0.246	0.250	0.252	0.253
	DEFLECTION DUE TO SUPERIMPOSED D.L.* ↓	0.000	0.017	0.034	0.051	0.068	0.084	0.100	0.116	0.131	0.145	0.158	0.170	0.181	0.191	0.200	0.208	0.214	0.219	0.222	0.224	0.225
	FINAL CAMBER ↑	0"	1/16"	1/16"	1/8"	1/8"	3/16"	3/16"	3/16"	1/4"	1/4"	1/4"	1/4"	5/16"	5/16"	5/16"	5/16"	5/16"	5/16"	5/16"	5/16"	5/16"
		FORTIETH POINTS																				
		0.525	0.55	0.575	0.60	0.625	0.65	0.675	0.70	0.725	0.75	0.775	0.80	0.825	0.85	0.875	0.90	0.925	0.95	0.975	1.0	
	CAMBER (GIRDER ALONE IN PLACE) ↑	0.252	0.250	0.246	0.241	0.234	0.226	0.217	0.206	0.194	0.180	0.166	0.149	0.134	0.116	0.098	0.079	0.060	0.040	0.020	0.000	
DEFLECTION DUE TO SUPERIMPOSED D.L.* ↓	0.224	0.222	0.219	0.214	0.208	0.200	0.191	0.181	0.170	0.158	0.145	0.131	0.116	0.100	0.084	0.068	0.051	0.034	0.017	0.000		
FINAL CAMBER ↑	5/16"	5/16"	5/16"	5/16"	5/16"	5/16"	5/16"	5/16"	5/16"	1/4"	1/4"	1/4"	1/4"	3/16"	3/16"	3/16"	1/8"	1/8"	1/16"	1/16"	0"	

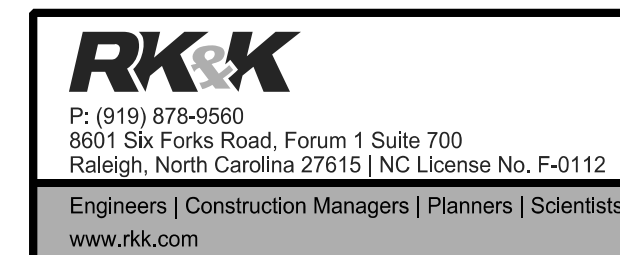
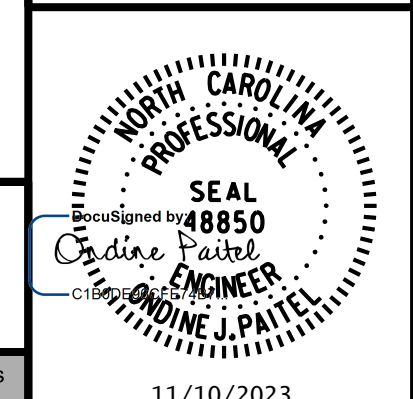
DEAD LOAD DEFLECTION AND CAMBER TABLE FOR GIRDERS - SPAN B																						
GIRDER		TWENTIETH POINTS																				
		0	0.05	0.10	0.15	0.20	0.25	0.30	0.35	0.40	0.45	0.50	0.55	0.60	0.65	0.70	0.75	0.80	0.85	0.90	0.95	1.0
BG1, BG2, BG3, BG4 AND BG5	CAMBER (GIRDER ALONE IN PLACE) ↑	0.000	0.005	0.010	0.015	0.019	0.024	0.027	0.030	0.031	0.033	0.033	0.033	0.031	0.030	0.027	0.024	0.019	0.015	0.010	0.005	0.000
	DEFLECTION DUE TO SUPERIMPOSED D.L.* ↓	0.000	0.003	0.005	0.008	0.010	0.013	0.014	0.016	0.017	0.018	0.018	0.018	0.017	0.016	0.014	0.013	0.010	0.008	0.005	0.003	0.000
	FINAL CAMBER ↑	0"	1/16"	1/16"	1/16"	1/8"	1/8"	1/8"	3/16"	3/16"	3/16"	3/16"	3/16"	3/16"	3/16"	1/8"	1/8"	1/8"	1/16"	1/16"	1/16"	0"

DEFLECTIONS ARE IN FEET (DECIMAL FORM) AT TWENTIETH POINTS BETWEEN BEARINGS, REQUIRED CAMBER VALUES ARE IN INCHES (FRACTIONAL FORM).

\* INCLUDES FUTURE WEARING SURFACE IN SUPERIMPOSED DEAD LOAD

PROJECT NO. R-2577A  
FORSYTH COUNTY  
 STATION: 140+39.50 -L-

BRIDGE NO. 330814



STATE OF NORTH CAROLINA  
 DEPARTMENT OF TRANSPORTATION  
 RALEIGH  
 SUPERSTRUCTURE  
 GIRDER DEFLECTION AND  
 CAMBER DETAILS  
 RIGHT LANE

REVISIONS				SHEET NO.	
NO.	BY:	DATE:	NO.	BY:	DATE:
1			3		
2			4		

TOTAL SHEETS: 34

DRAWN BY : T. K. BOYD DATE : SEP 2023  
 CHECKED BY : L. K. AUSTIN DATE : SEP 2023  
 DESIGN ENGINEER OF RECORD : Q. J. PAITEL DATE : SEP 2023

**DOCUMENT NOT CONSIDERED FINAL  
 UNLESS ALL SIGNATURES COMPLETED**

11/10/2023 R:\Structures\BRIDGE\RightBridge\GN\FINAL\R2577A\_SMU\_DL\_330815.dgn