

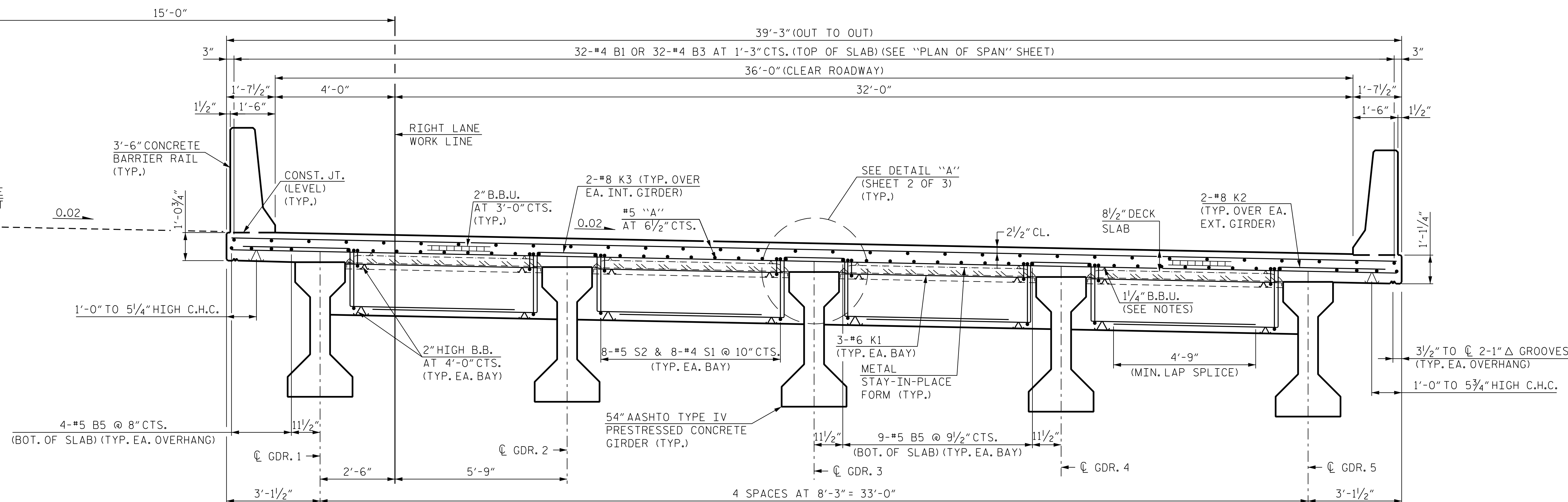
NOTES:

PROVIDE 1/4" HIGH BEAM BOLSTERS UPPER AT 4'-0" CTS. ATOP THE METAL STAY-IN-PLACE FORMS TO SUPPORT THE BOTTOM MAT OF "A" BARS.

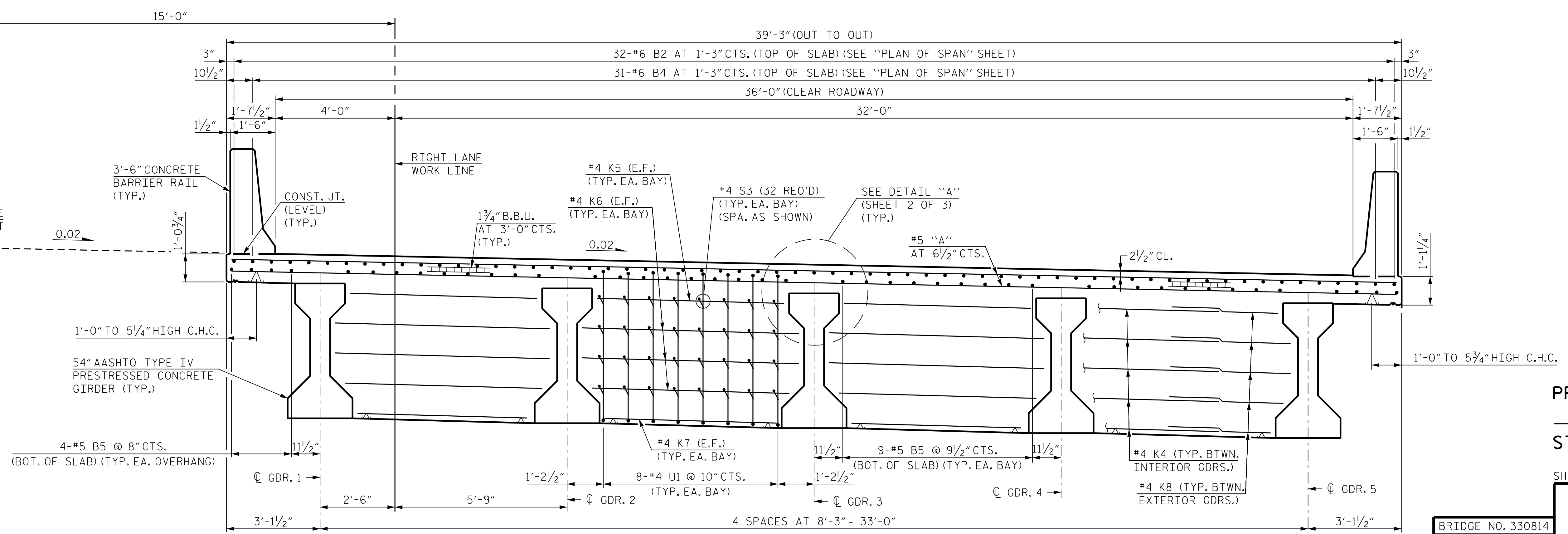
LONGITUDINAL STEEL MAY BE SHIFTED SLIGHTLY, AS NECESSARY, TO AVOID INTERFERENCE WITH STIRRUPS IN PRESTRESSED CONCRETE GIRDERS.

PREVIOUSLY CAST CONCRETE IN A CONTINUOUS UNIT SHALL HAVE ATTAINED A MINIMUM OF 3,000 PSI BEFORE ADDITIONAL CONCRETE IS CAST IN THE UNIT.

WHEN USING REMOVABLE FORMS, PROVIDE CONTINUOUS HIGH CHAIRS FOR METAL DECK (CHCM) AT 4'-0" CTS. WITH A HEIGHT TO SUPPORT THE BOTTOM MAT A "A" BARS A CLEAR DISTANCE OF 2 1/2" ABOVE THE TOP OF THE REMOVABLE FORM.



TYPICAL SECTION AT END BENTS

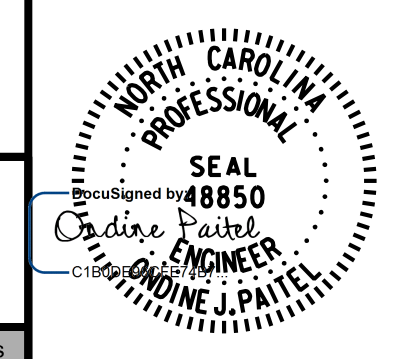


TYPICAL SECTION AT BENT

PROJECT NO. R-2577A
 FORSYTH COUNTY
 STATION: 140+39.50 -L-

SHEET 1 OF 3

BRIDGE NO. 330814



STATE OF NORTH CAROLINA
 DEPARTMENT OF TRANSPORTATION
 RALEIGH
**SUPERSTRUCTURE
 TYPICAL SECTIONS**

RIGHT LANE

| REVISIONS | | | | | | SHEET NO. | |
|-----------|-----|-------|-----|-----|-------|--------------|--|
| NO. | BY: | DATE: | NO. | BY: | DATE: | SR-6 | |
| 1 | | | 3 | | | TOTAL SHEETS | |
| 2 | | | 4 | | | 34 | |

RK&K
 P: (919) 878-9560
 8601 Six Forks Road, Forum 1 Suite 700
 Raleigh, North Carolina 27615 | NC License No. F-0112
 Engineers | Construction Managers | Planners | Scientists
 www.rkk.com
 Responsive People | Creative Solutions

**DOCUMENT NOT CONSIDERED FINAL
 UNLESS ALL SIGNATURES COMPLETED**

11/10/2023 R:\Structures\Bridges\RightBridge\GNV\FINAL\2577A_SMU_TSI_330814.dgn tboyd

DRAWN BY : T. K. BOYD DATE : SEP 2023
 CHECKED BY : L. K. AUSTIN DATE : SEP 2023
 DESIGN ENGINEER OF RECORD : O. J. PAITEL DATE : SEP 2023