

PLAN

FOR REINFORCING STEEL IN WINGWALL SEE SHEET 2 OF 3, (TYP.)

**NOTES:**

FOR SECTION A-A, SECTION B-B AND SECTION C-C, SEE SHEET 3 OF 3.

FOR PILE SPLICE DETAILS, SEE SHEET 3 OF 3.

FOR TEMPORARY DRAINAGE DETAILS, SEE END BENT 2 SHEET 3 OF 3 (SL-31).

THE TOP SURFACE OF THE END BENT CAP, EXCEPT THE BRIDGE SEAT BUILD-UPS, SHALL BE SLOPED TRANSVERSELY FROM THE FILL FACE TO THE BACK FACE AT THE RATE OF 2%.

THE TOP SURFACE AREAS OF THE END BENT CAPS SHALL BE CURED IN ACCORDANCE WITH THE STANDARD SPECIFICATIONS EXCEPT THE MEMBRANE CURING COMPOUND METHOD SHALL NOT BE USED.

BACKWALL SHALL BE PLACED BEFORE APPLYING THE EPOXY PROTECTIVE COATING.

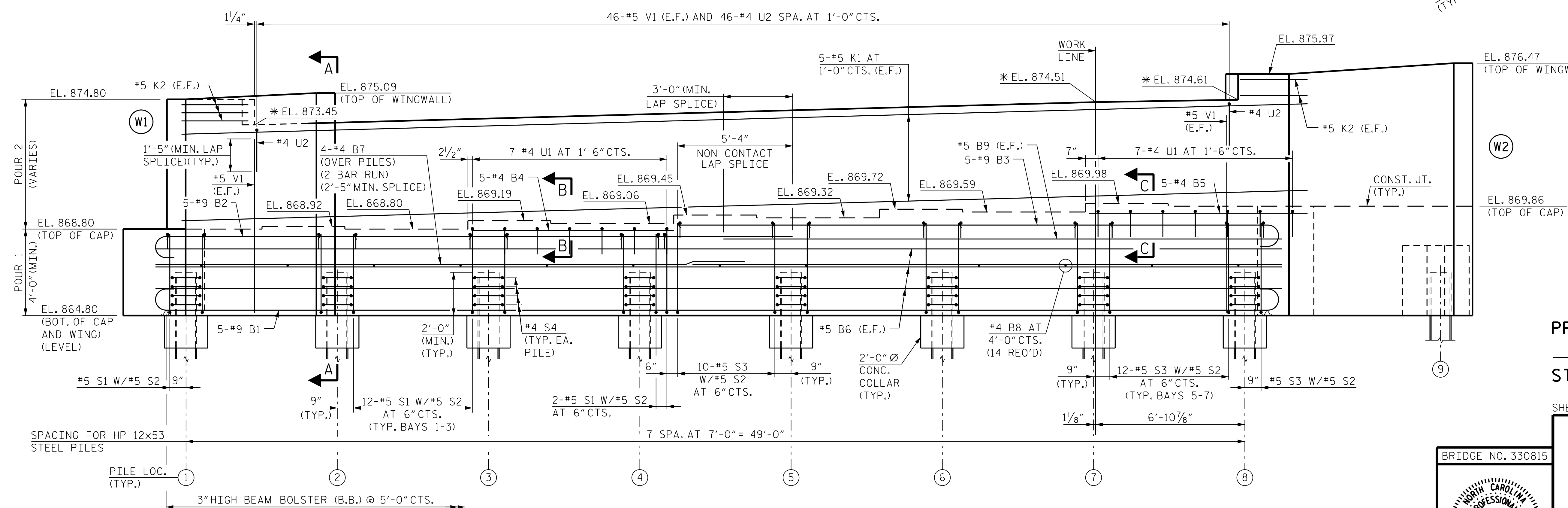
STIRRUPS IN CAP MAY BE SHIFTED SLIGHTLY TO AVOID CONFLICT WITH ANCHOR BOLTS.

“V” BARS IN WINGWALLS SHALL BE PLACED 2” CLEAR FROM TOP OF WING.

**LEGEND:**

HP 12x53 VERTICAL STEEL PILES

HP 12x53 STEEL PILES BATTERED 3:12



ELEVATION

\* ELEVATION AT FILL FACE

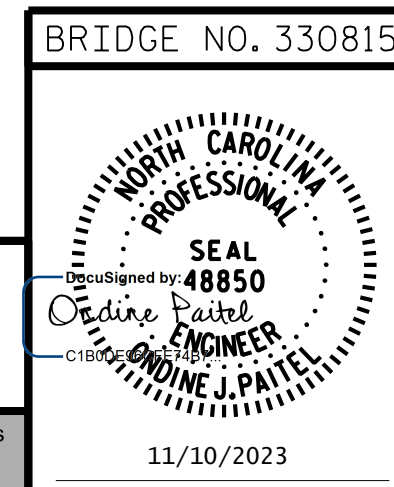
PROJECT NO. R-2577A  
 FORSYTH COUNTY  
 STATION: 140+39.50 -L-

SHEET 1 OF 3

STATE OF NORTH CAROLINA  
 DEPARTMENT OF TRANSPORTATION  
 RALEIGH

**SUBSTRUCTURE  
 END BENT 1  
 PLAN AND ELEVATION**

LEFT LANE



**RK&K**  
 P: (919) 878-9560  
 8601 Six Forks Road, Forum 1 Suite 700  
 Raleigh, North Carolina 27615 | NC License No. F-0112  
 Engineers | Construction Managers | Planners | Scientists  
 www.rkk.com

REVISIONS				SHEET NO.
NO.	BY:	DATE:	NO.	DATE:
1			3	
2			4	

DOCUMENT NOT CONSIDERED FINAL  
 UNLESS ALL SIGNATURES COMPLETED

11/10/2023 R:\Structures\BRIDGE\LeftBridge\DG\N\FINAL\R2577A\_SMU\_EIA\_330814.dgn

DRAWN BY : B. A. HAAG DATE : SEP 2023  
 CHECKED BY : L. K. AUSTIN DATE : SEP 2023  
 DESIGN ENGINEER OF RECORD : O. J. PAITEL DATE : SEP 2023