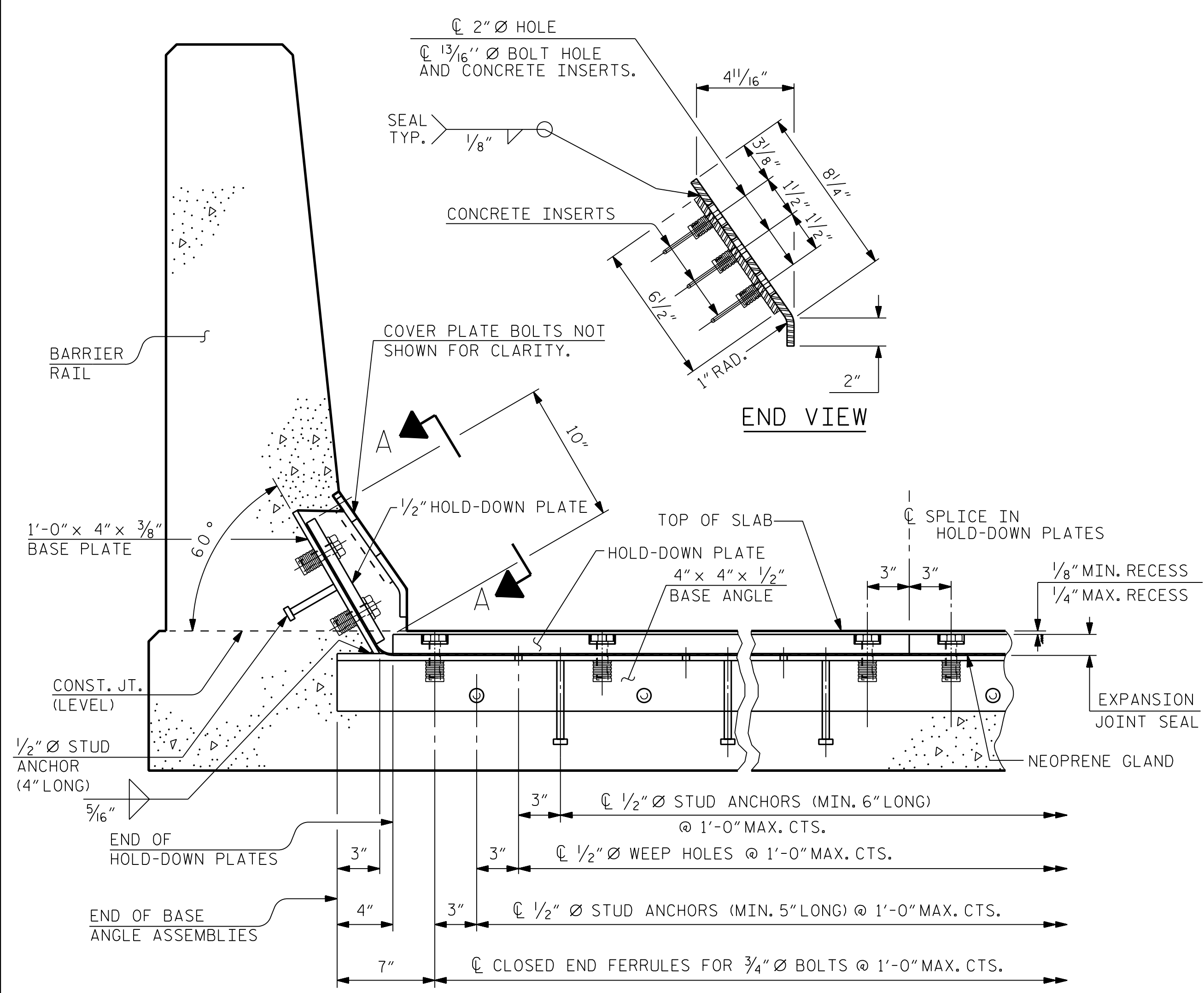
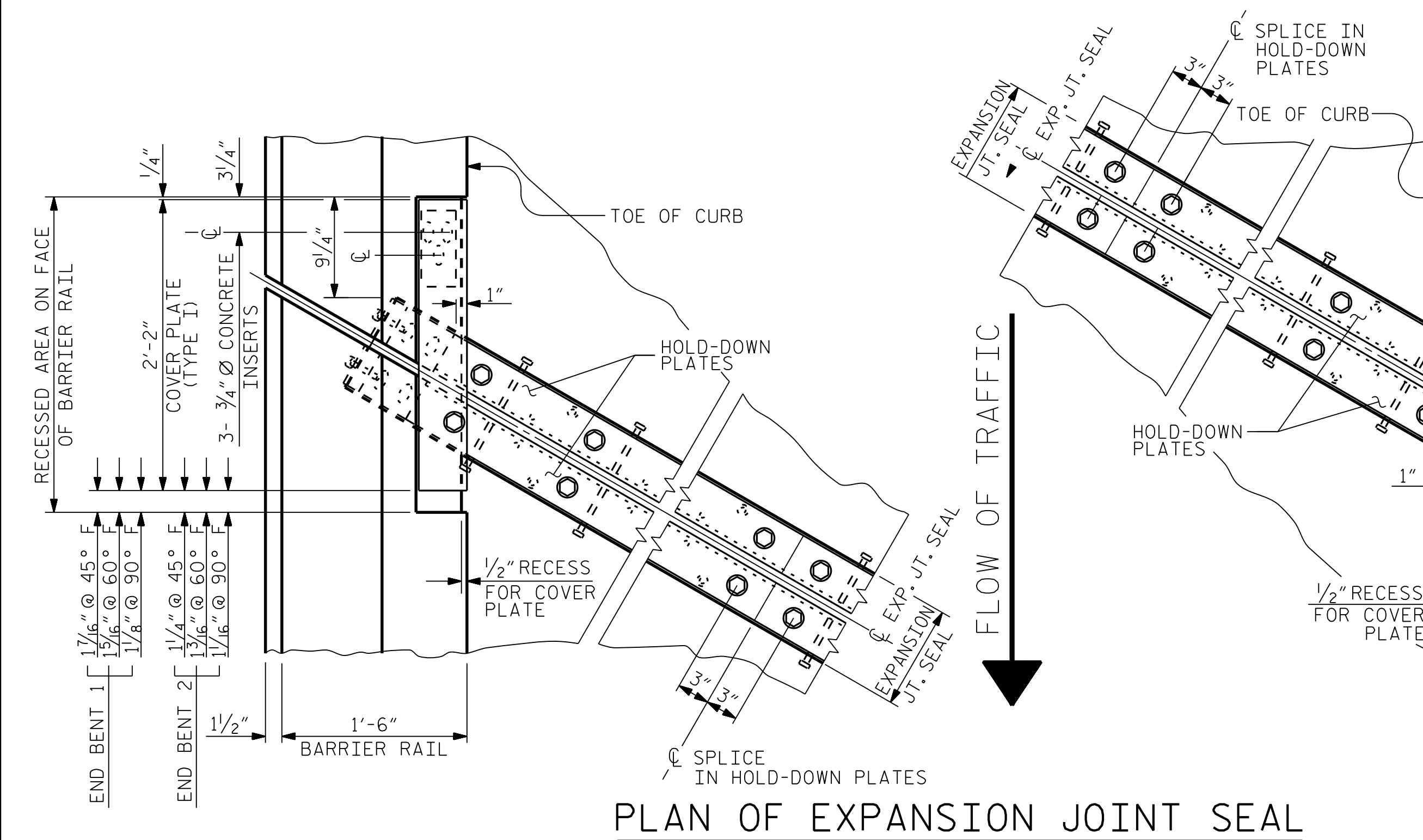


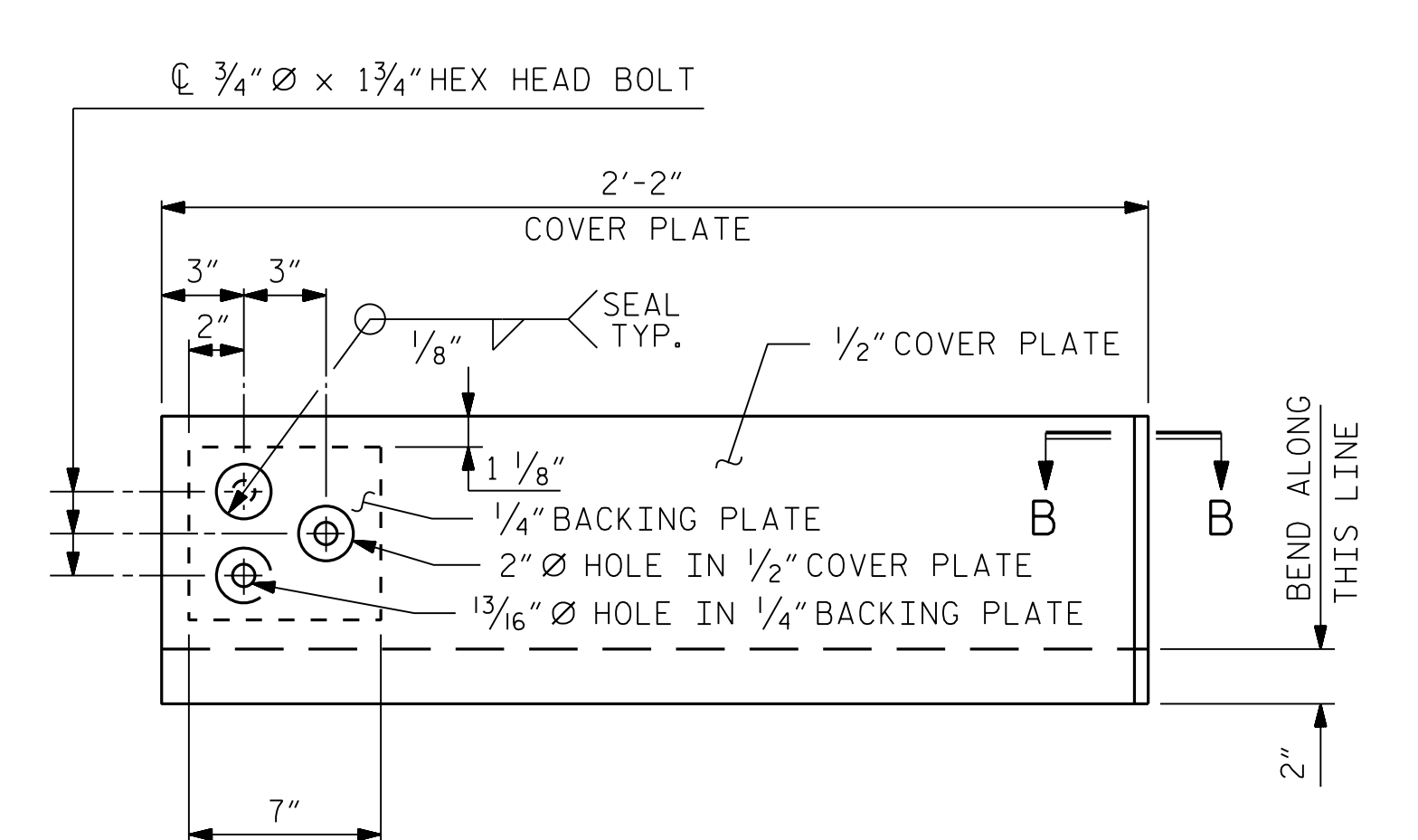
11/10/2023 R:\Structures\BRIDGE\LeftBridge\GDN\FINAL\R2577A_SMU_EJS2_330814.dgn



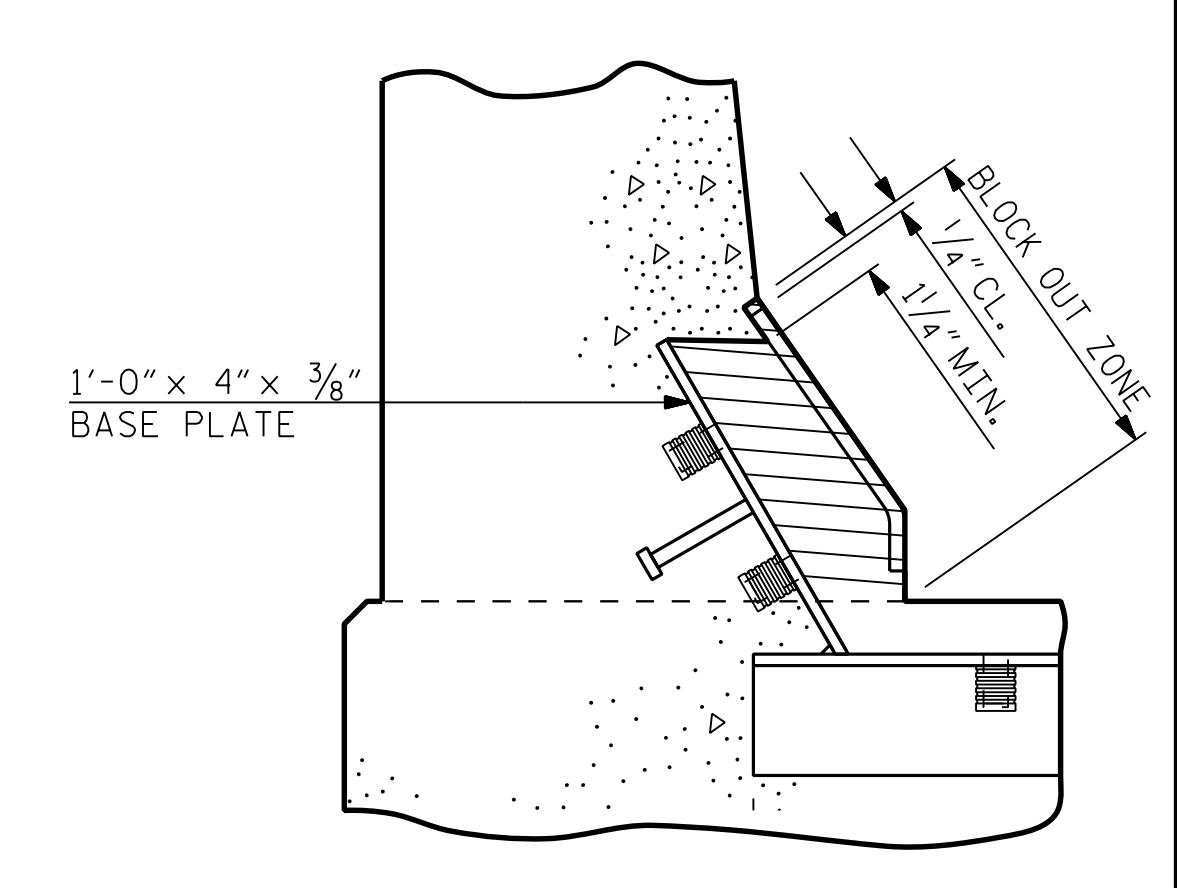
SECTION THRU RAIL NORMAL TO JOINT



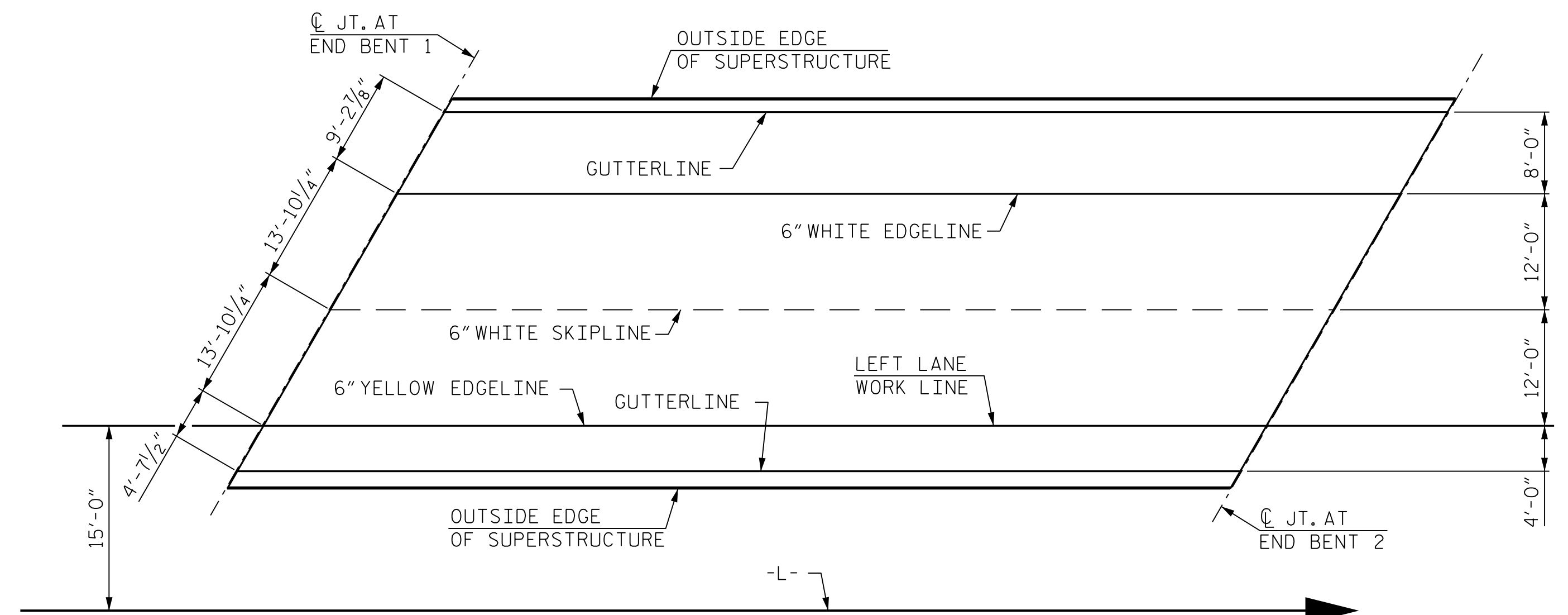
PLAN OF EXPANSION JOINT SEAL



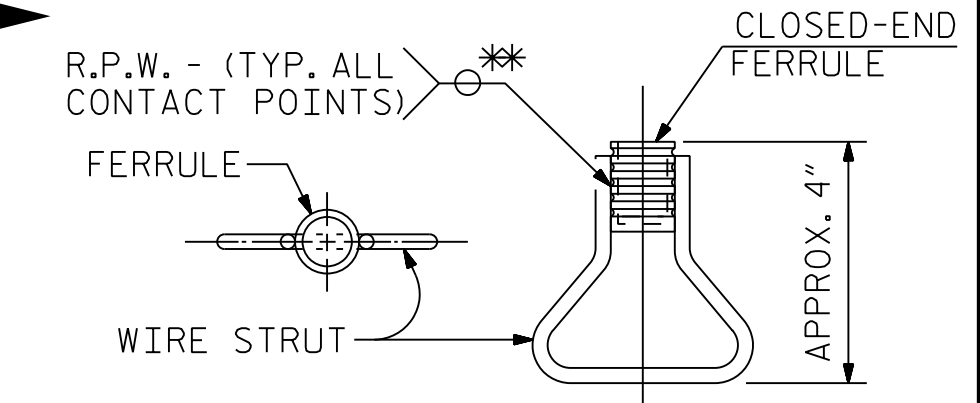
TYPE I - ELEVATION VIEW
COVER PLATE DETAILS



BLOCK OUT DETAIL
SEE "SECTION A - A" FOR OTHER DETAILS.



PAVEMENT MARKING ALIGNMENT



PLAN ELEVATION
CONCRETE INSERT

* EACH WELDED ATTACHMENT OF WIRE TO FERRULE SHALL DEVELOP THE TENSILE STRENGTH OF THE WIRE.

PROJECT NO. R-2577A
 FORSYTH COUNTY
 STATION: 140+39.50 -L-

SHEET 2 OF 2

DRAWN BY: T.K. BOYD DATE: SEP 2023
 CHECKED BY: L.K. AUSTIN DATE: SEP 2023
 DESIGN ENGINEER OF RECORD: O.J. PAITEL DATE: SEP 2023

RK&K
 P: (919) 878-9560
 8601 Six Forks Road, Forum 1 Suite 700
 Raleigh, North Carolina 27615 | NC License No. F-0112
 Engineers | Construction Managers | Planners | Scientists
 www.rkk.com
 Responsive People | Creative Solutions

BRIDGE NO. 330815
 SEAL
 48850
 O.J. PAITEL
 PROFESSIONAL ENGINEER
 11/10/2023

STATE OF NORTH CAROLINA		DEPARTMENT OF TRANSPORTATION		RALEIGH	
SUPERSTRUCTURE					
EXPANSION JOINT SEAL					
DETAILS FOR					
BARRIER RAIL					
LEFT LANE					
REVISIONS					
NO.	BY:	DATE:	NO.	BY:	DATE:
1			3		
2			4		
					SHEET NO. SL-21
					TOTAL SHEETS 35

STD. NO. EJS2