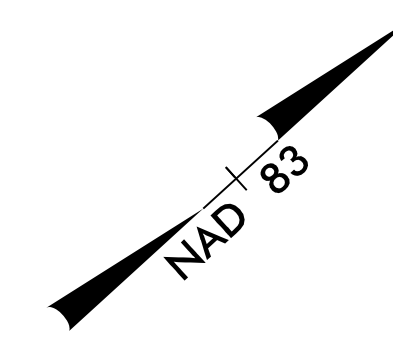
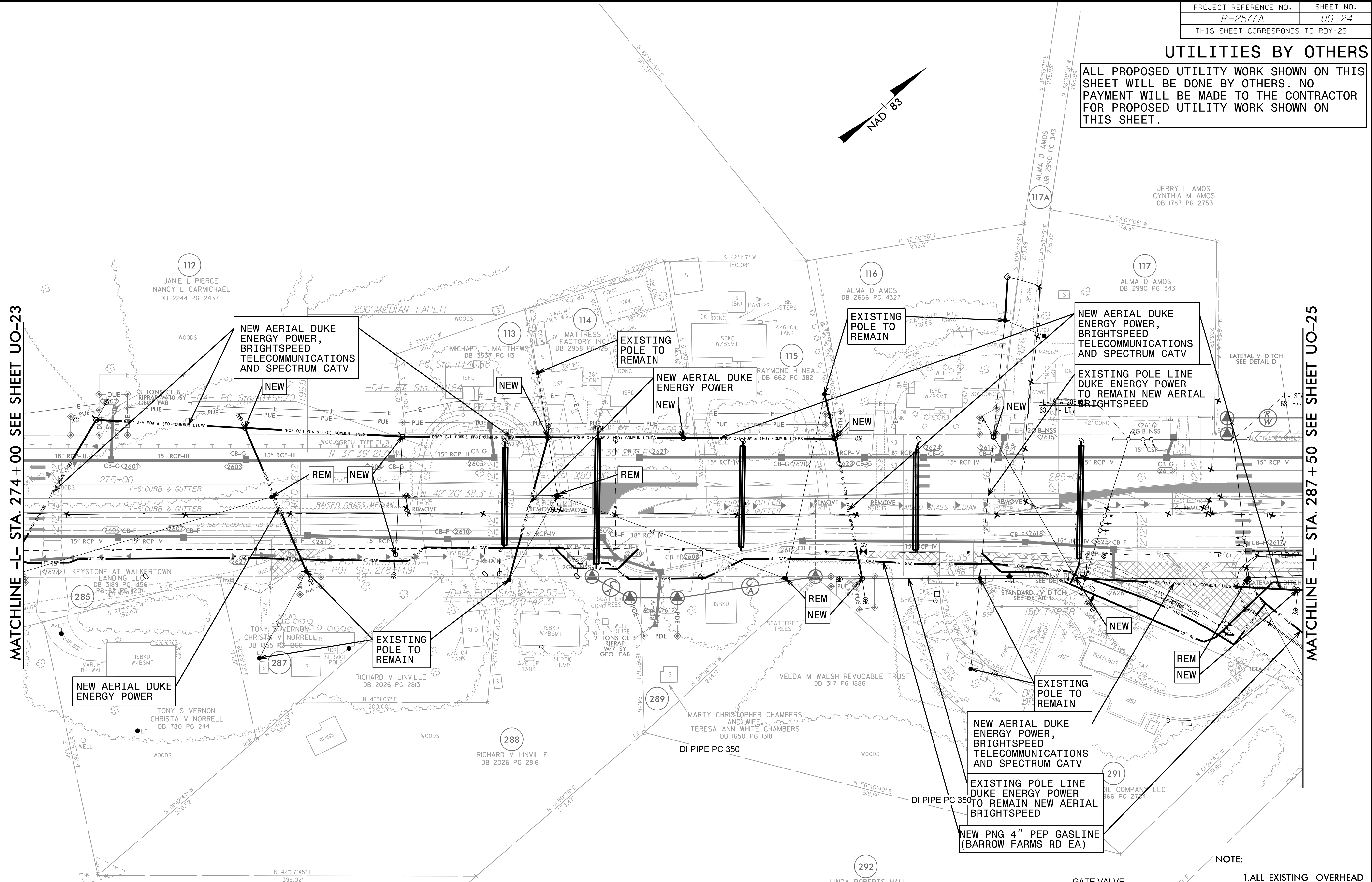


UTILITIES BY OTHERS

ALL PROPOSED UTILITY WORK SHOWN ON THIS SHEET WILL BE DONE BY OTHERS. NO PAYMENT WILL BE MADE TO THE CONTRACTOR FOR PROPOSED UTILITY WORK SHOWN ON THIS SHEET.

MATCHLINE -L- STA. 274+00 SEE SHEET UO-23

MATCHLINE -L- STA. 287+50 SEE SHEET UO-25



UTILITY OWNERS ON THIS SHEET

- DUKE ENERGY - POWER (D)
- CENTURYLINK COMMUNICATIONS - COMMUNICATIONS
- MCI COMMUNICATIONS - COMMUNICATIONS
- SPECTRUM - CATV
- CITY OF WINSTON SALEM - WATERLINE (8", 12" DIP)

NOTE:
1. ALL EXISTING OVERHEAD POWER ROUTING/CONNECTIVITY PROVIDED BY: DUKE ENERGY AND GOOGLE EARTH



8/17/19
R:\2023\Projects\16162_NCCenL\SA\H01_R2577A_US158\Design\Utilities\UBO\ProJ\R-2577A-ut.Rdy\26_U024_psh.dgn