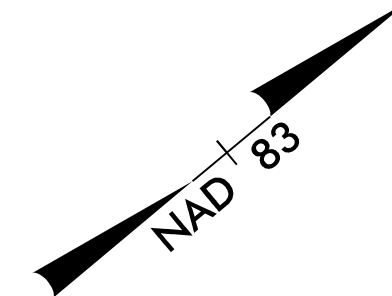
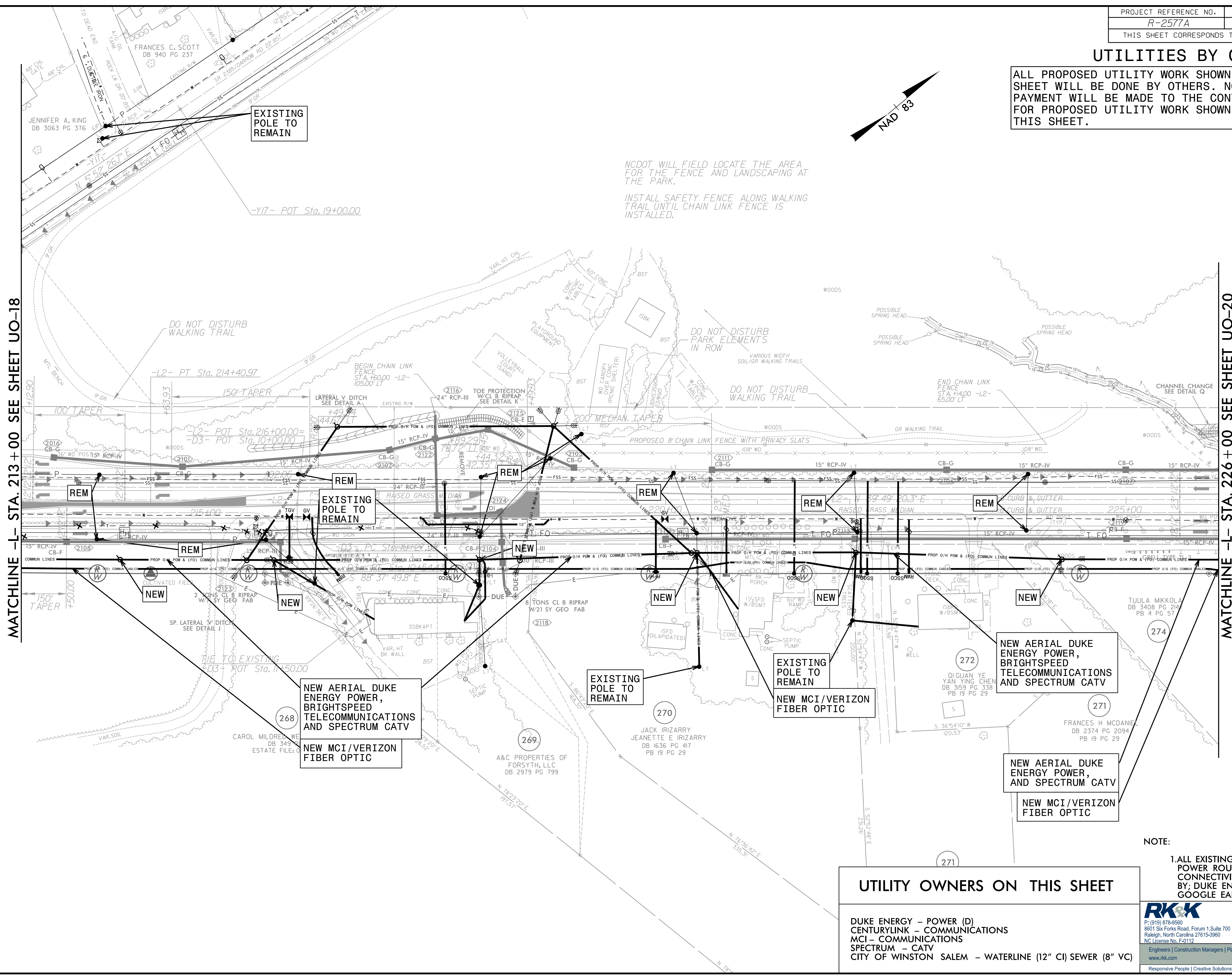


UTILITIES BY OTHERS

ALL PROPOSED UTILITY WORK SHOWN ON THIS SHEET WILL BE DONE BY OTHERS. NO PAYMENT WILL BE MADE TO THE CONTRACTOR FOR PROPOSED UTILITY WORK SHOWN ON THIS SHEET.



NCDOT WILL FIELD LOCATE THE AREA FOR THE FENCE AND LANDSCAPING AT THE PARK.
 INSTALL SAFETY FENCE ALONG WALKING TRAIL UNTIL CHAIN LINK FENCE IS INSTALLED.



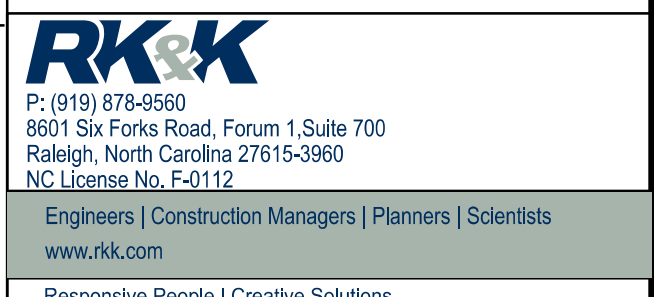
MATCHLINE -L- STA. 213+00 SEE SHEET UO-18

MATCHLINE -L- STA. 226+00 SEE SHEET UO-20

UTILITY OWNERS ON THIS SHEET

- DUKE ENERGY - POWER (D)
- CENTURYLINK - COMMUNICATIONS
- MCI - COMMUNICATIONS
- SPECTRUM - CATV
- CITY OF WINSTON SALEM - WATERLINE (12" CI) SEWER (8" VC)

NOTE:
 1. ALL EXISTING OVERHEAD POWER ROUTING/CONNECTIVITY PROVIDED BY; DUKE ENERGY AND GOOGLE EARTH



8/17/19 12/20/23 C:\Users\jason\OneDrive\Documents\Projects\2016\16162_NCCenLSA\H01_R2577A_US158\Design\Utilities\UBO\ProJ\N-2577A-ut.Rdy21.U019.psh.dgn