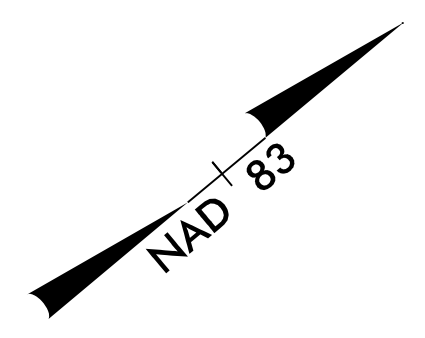


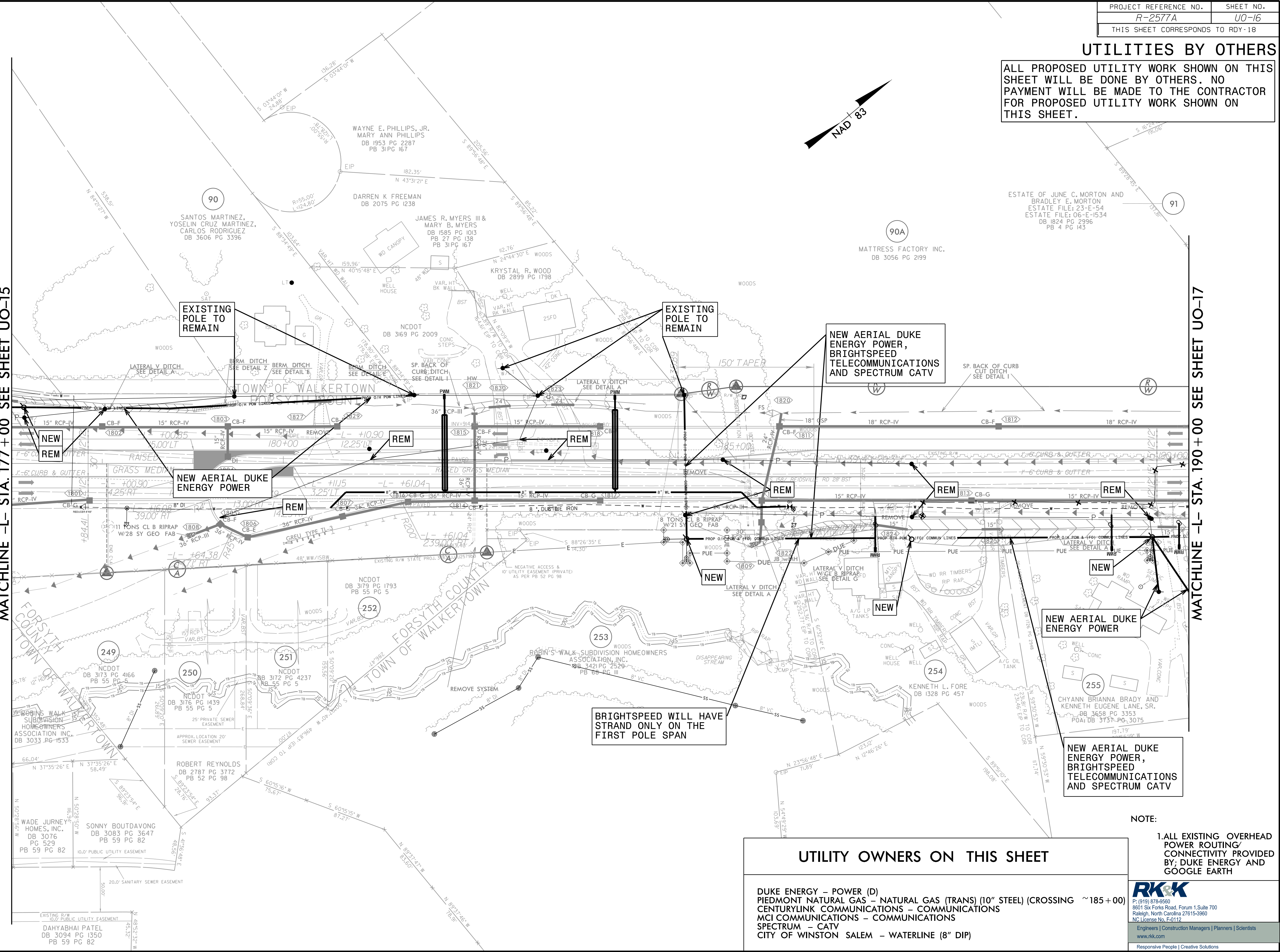
UTILITIES BY OTHERS

ALL PROPOSED UTILITY WORK SHOWN ON THIS SHEET WILL BE DONE BY OTHERS. NO PAYMENT WILL BE MADE TO THE CONTRACTOR FOR PROPOSED UTILITY WORK SHOWN ON THIS SHEET.



MATCHLINE -L- STA. 177 + 00 SEE SHEET UO-15

MATCHLINE -L- STA. 190 + 00 SEE SHEET UO-17



UTILITY OWNERS ON THIS SHEET

DUKE ENERGY - POWER (D)
 PIEDMONT NATURAL GAS - NATURAL GAS (TRANS) (10" STEEL) (CROSSING ~ 185 + 00)
 CENTURYLINK COMMUNICATIONS - COMMUNICATIONS
 MCI COMMUNICATIONS - COMMUNICATIONS
 SPECTRUM - CATV
 CITY OF WINSTON SALEM - WATERLINE (8" DIP)

NOTE:

1. ALL EXISTING OVERHEAD POWER ROUTING/CONNECTIVITY PROVIDED BY DUKE ENERGY AND GOOGLE EARTH



8/17/19
 R:\112223\112223-com\Fs\Cloud\Projects\2016\16162_NCCen\SA\H01_R2577A_US158\Design\Utilities\Engineering\UBO\Pro\J\R-2577A-ut.Rdy\18_U016_psh.dgn