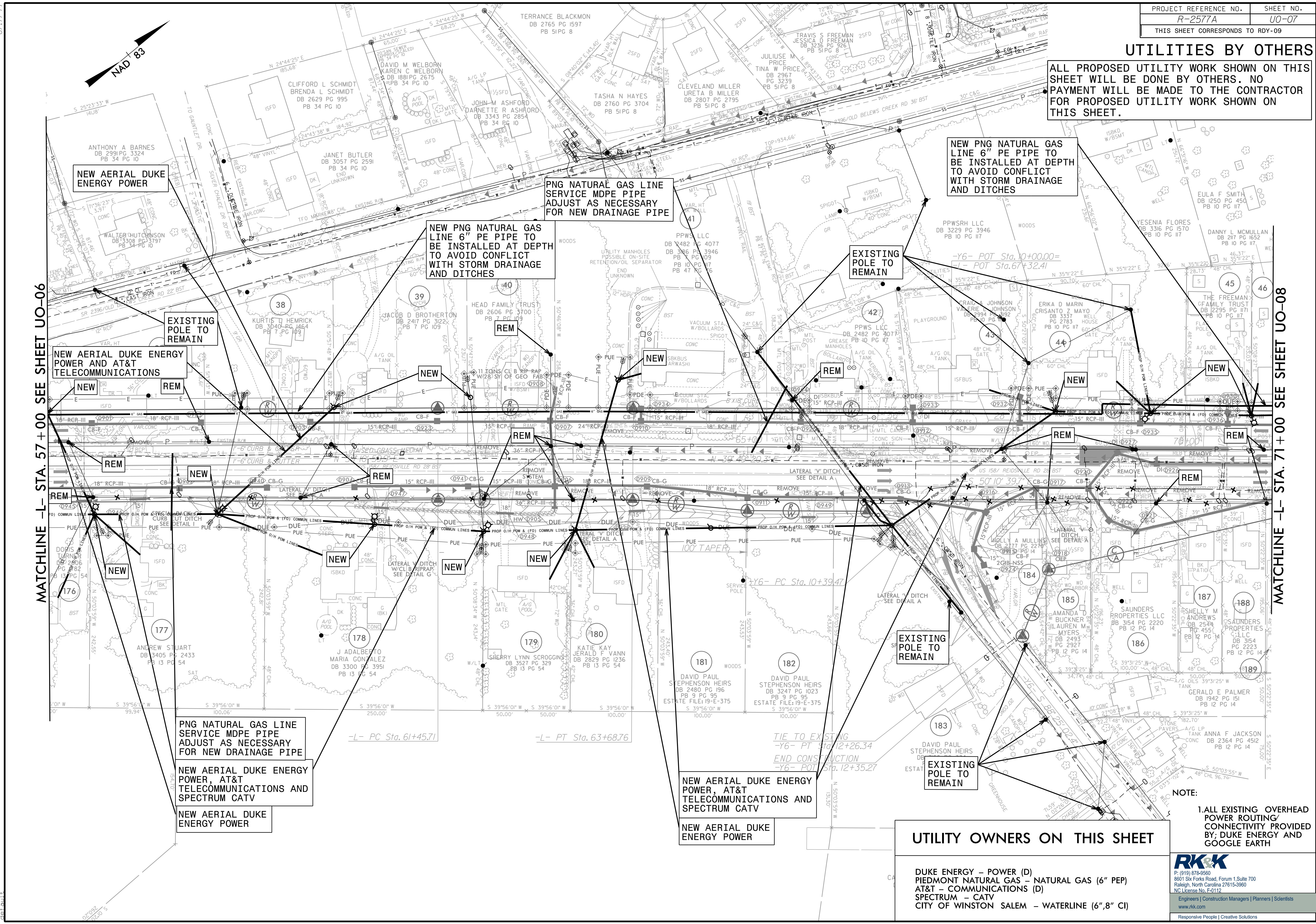


### UTILITIES BY OTHERS

ALL PROPOSED UTILITY WORK SHOWN ON THIS SHEET WILL BE DONE BY OTHERS. NO PAYMENT WILL BE MADE TO THE CONTRACTOR FOR PROPOSED UTILITY WORK SHOWN ON THIS SHEET.



MATCHLINE -L- STA. 57+00 SEE SHEET UO-06

MATCHLINE -L- STA. 71+00 SEE SHEET UO-08

NEW AERIAL DUKE ENERGY POWER

PNG NATURAL GAS LINE SERVICE MDPE PIPE ADJUST AS NECESSARY FOR NEW DRAINAGE PIPE

NEW PNG NATURAL GAS LINE 6" PE PIPE TO BE INSTALLED AT DEPTH TO AVOID CONFLICT WITH STORM DRAINAGE AND DITCHES

NEW PNG NATURAL GAS LINE 6" PE PIPE TO BE INSTALLED AT DEPTH TO AVOID CONFLICT WITH STORM DRAINAGE AND DITCHES

EXISTING POLE TO REMAIN

NEW AERIAL DUKE ENERGY POWER AND AT&T TELECOMMUNICATIONS

EXISTING POLE TO REMAIN

NEW

NEW

NEW

REM

NEW

NEW

REM

NEW

REM

REM

NEW

REM

REM

REM

REM

NEW

NEW

NEW

NEW

NEW

NEW

EXISTING POLE TO REMAIN

PNG NATURAL GAS LINE SERVICE MDPE PIPE ADJUST AS NECESSARY FOR NEW DRAINAGE PIPE

NEW AERIAL DUKE ENERGY POWER, AT&T TELECOMMUNICATIONS AND SPECTRUM CATV

NEW AERIAL DUKE ENERGY POWER

NEW AERIAL DUKE ENERGY POWER, AT&T TELECOMMUNICATIONS AND SPECTRUM CATV

NEW AERIAL DUKE ENERGY POWER

### UTILITY OWNERS ON THIS SHEET

- DUKE ENERGY - POWER (D)
- PIEDMONT NATURAL GAS - NATURAL GAS (6" PEP)
- AT&T - COMMUNICATIONS (D)
- SPECTRUM - CATV
- CITY OF WINSTON SALEM - WATERLINE (6", 8" CI)

NOTE:  
1. ALL EXISTING OVERHEAD POWER ROUTING/CONNECTIVITY PROVIDED BY DUKE ENERGY AND GOOGLE EARTH

**RK&K**  
 P: (919) 878-9560  
 8601 Six Forks Road, Forum 1, Suite 700  
 Raleigh, North Carolina 27615-3960  
 NC License No. F-0112  
 Engineers | Construction Managers | Planners | Scientists  
 www.rkk.com  
 Responsive People | Creative Solutions

8.17.7.99  
3/19/2024  
R:\Utilities\Engineering\UB0\Proj\NR-2577A\ut\_rdy09\_U007\_psh.dgn