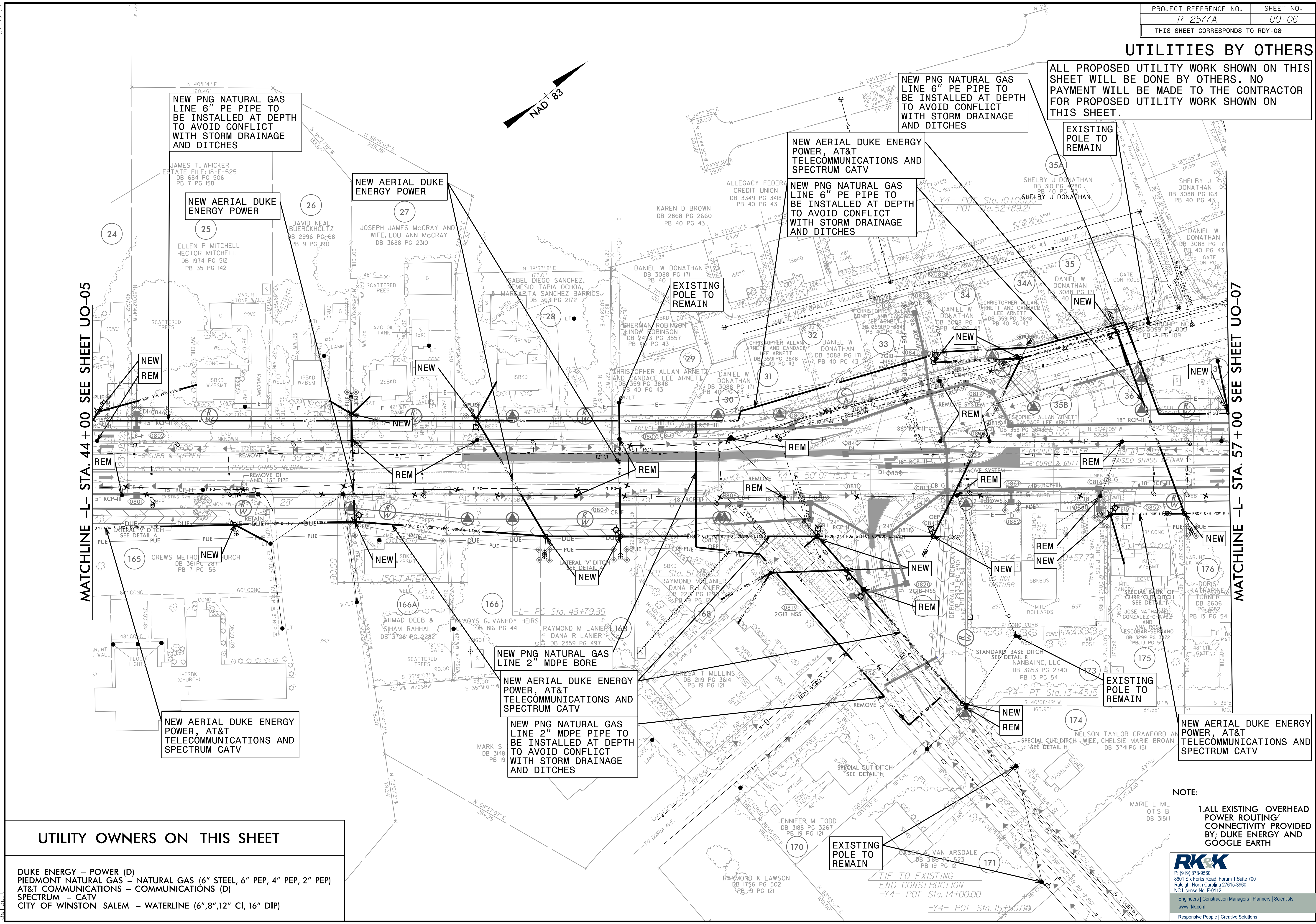


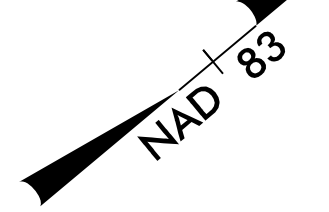
UTILITIES BY OTHERS

ALL PROPOSED UTILITY WORK SHOWN ON THIS SHEET WILL BE DONE BY OTHERS. NO PAYMENT WILL BE MADE TO THE CONTRACTOR FOR PROPOSED UTILITY WORK SHOWN ON THIS SHEET.



MATCHLINE -L- STA. 44 + 00 SEE SHEET UO-05

MATCHLINE -L- STA. 57 + 00 SEE SHEET UO-07



UTILITY OWNERS ON THIS SHEET

DUKE ENERGY - POWER (D)
 PIEDMONT NATURAL GAS - NATURAL GAS (6" STEEL, 6" PEP, 4" PEP, 2" PEP)
 AT&T COMMUNICATIONS - COMMUNICATIONS (D)
 SPECTRUM - CATV
 CITY OF WINSTON SALEM - WATERLINE (6", 8", 12" CI, 16" DIP)

NOTE:
 1. ALL EXISTING OVERHEAD POWER ROUTING/CONNECTIVITY PROVIDED BY: DUKE ENERGY AND GOOGLE EARTH

RKK
 P: (919) 878-9560
 8601 Six Forks Road, Forum 1, Suite 700
 Raleigh, North Carolina 27615-3960
 NC License No. F-0112
 Engineers | Construction Managers | Planners | Scientists
 www.rkk.com
 Responsive People | Creative Solutions

3/19/2024 R:\Utilities\Engineering\UB0\Proj\NR-2577A\ut_rdy08_U006_psh.dgn