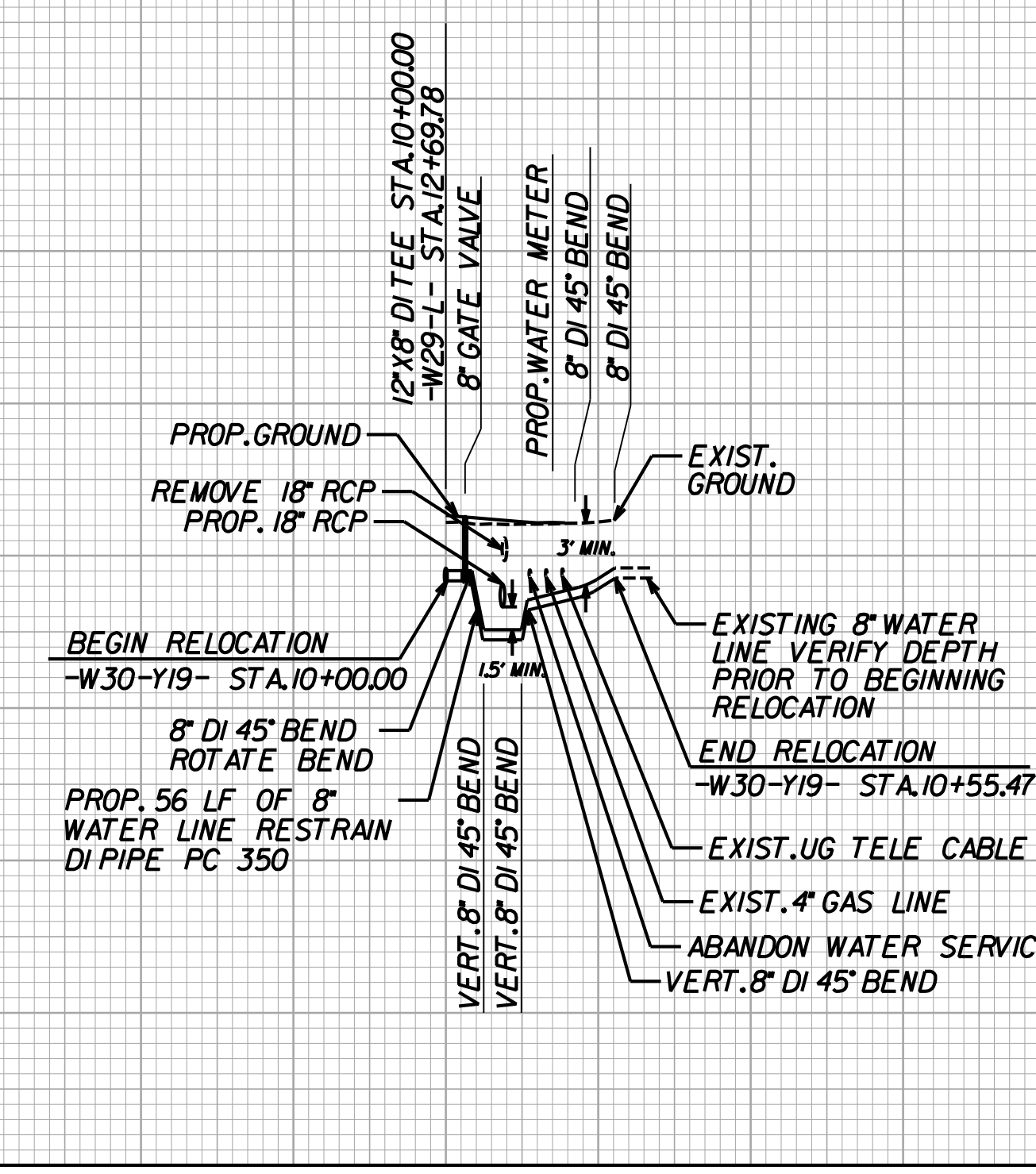


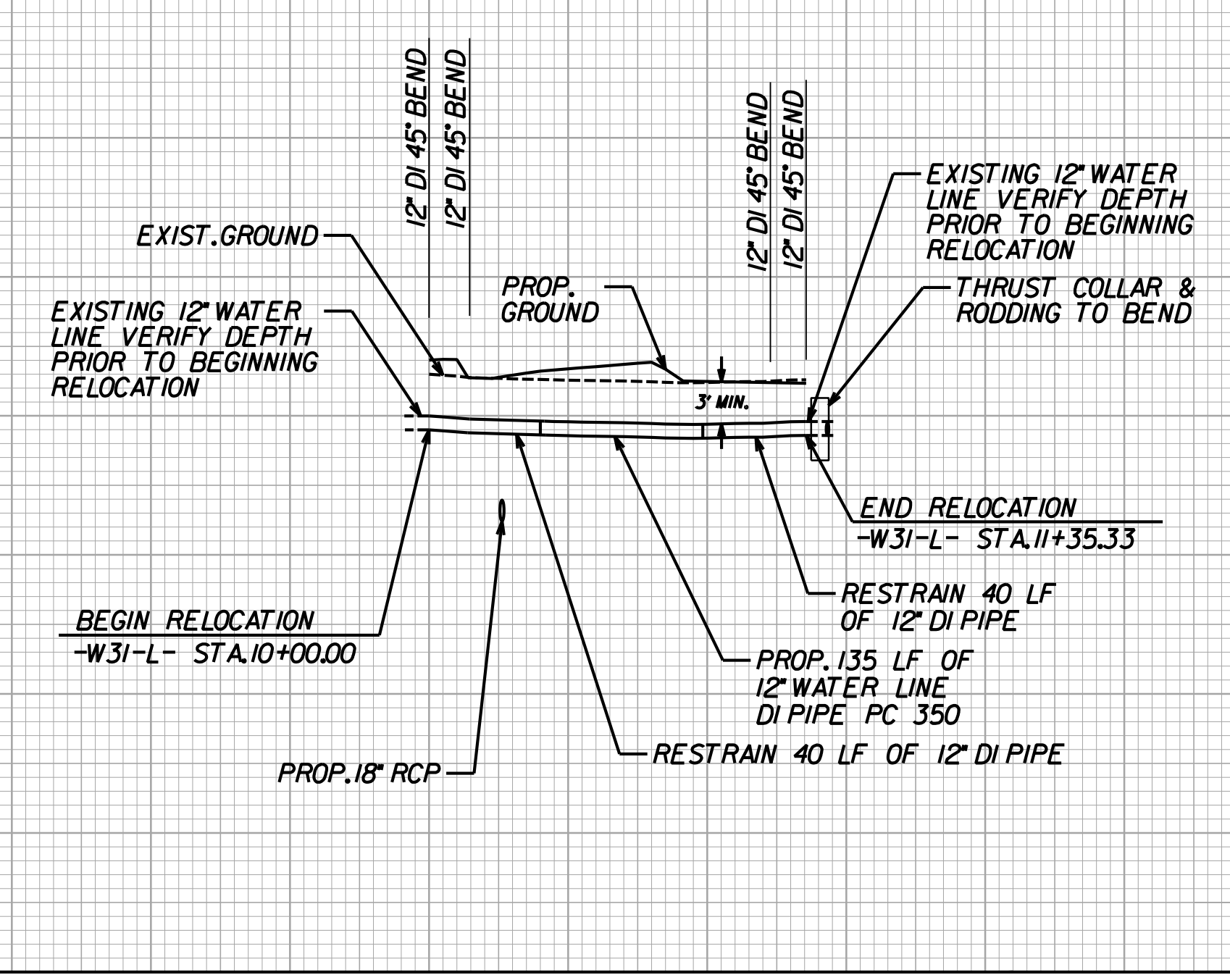
5/28/99

THE INSTALLATION OF THRUST COLLARS MAY NOT BE NECESSARY AT ALL RELOCATIONS DUE TO THE PLACEMENT OF INSERTION VALVES.

### -W30-Y19-



### -W31-L-

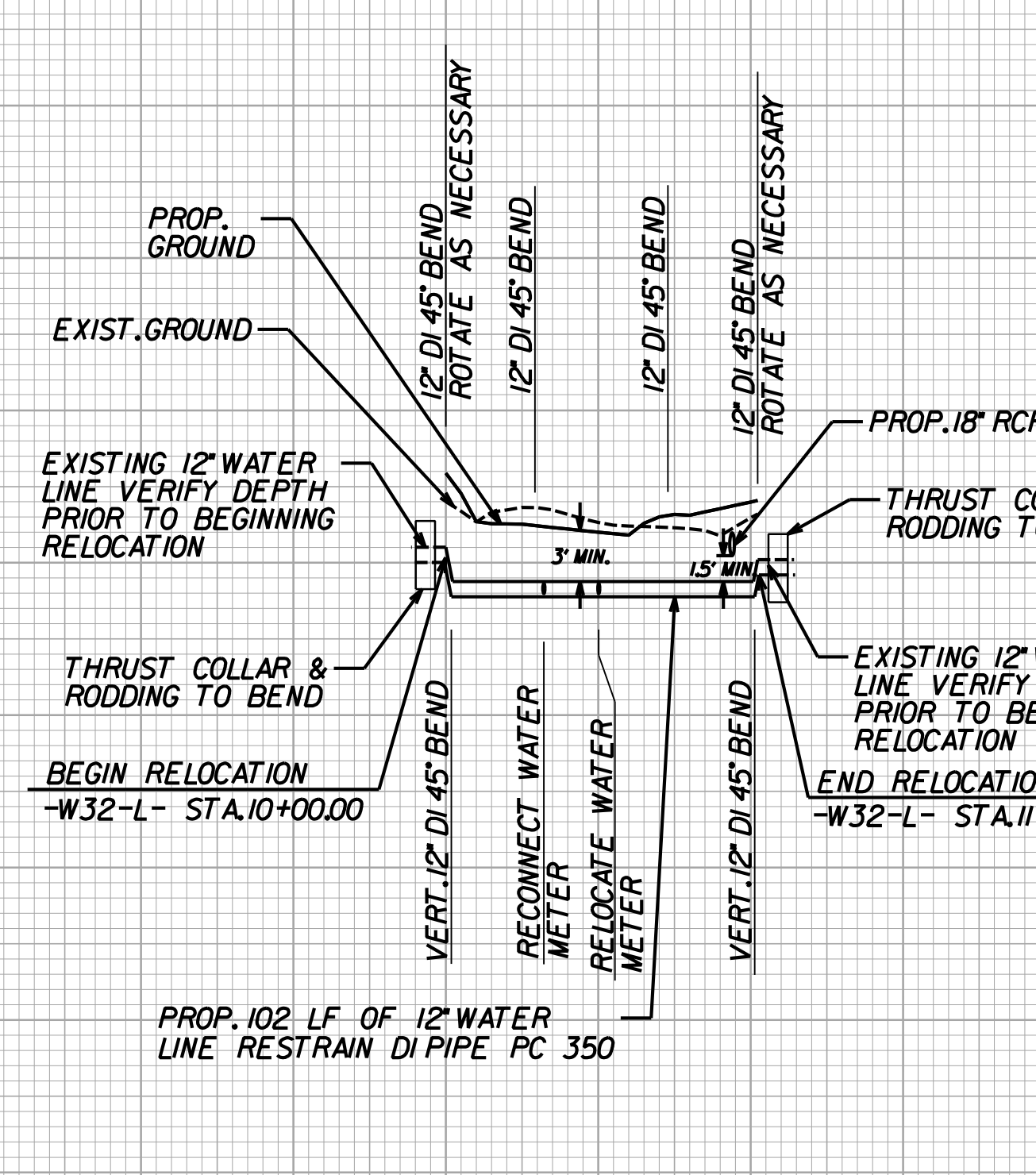


PROJECT REFERENCE NO. <b>R-2577A</b>	SHEET NO. <b>UC-39</b>
DESIGNED BY: <b>MEP</b>	
DRAWN BY: <b>MEP</b>	
CHECKED BY: <b>BMB</b>	
APPROVED BY: <b>BMB</b>	
REVISED:	
NORTH CAROLINA DEPARTMENT OF TRANSPORTATION UTILITIES ENGINEERING SECTION PHONE: (919) 707-6690 FAX: (919) 250-4151	
UTILITY CONSTRUCTION PLANS ONLY	

## UTILITY CONSTRUCTION

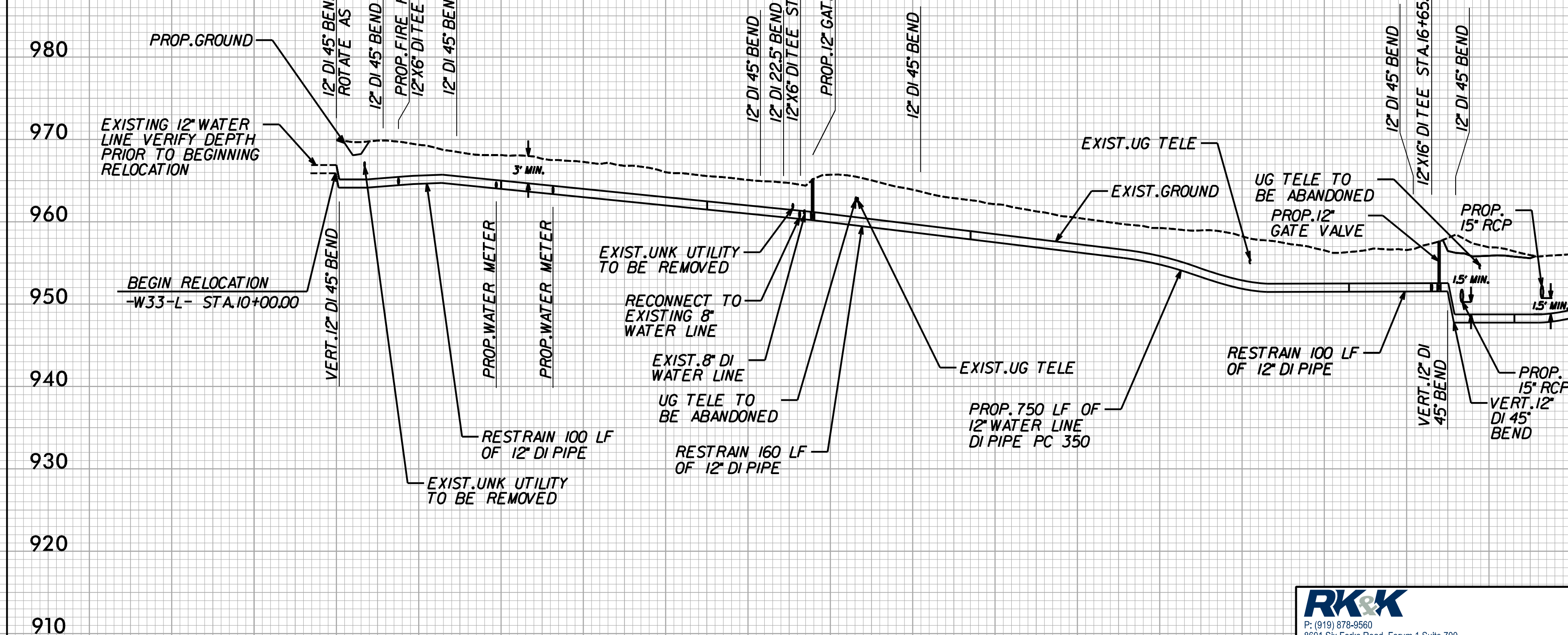
FOR -W30-Y19- PLAN SEE SHT. UC-23  
 FOR -W31-L- PLAN SEE SHT. UC-24  
 FOR -W32-L- PLAN SEE SHT. UC-26  
 FOR -W33-L- PLAN SEE SHTS. UC-26, UC-27

### -W32-L-



**DOCUMENT NOT CONSIDERED FINAL  
 UNLESS ALL SIGNATURES COMPLETED**

### -W33-L-



P: (919) 878-9580  
 8601 Six Forks Road, Forum 1, Suite 700  
 Raleigh, North Carolina 27615-3960  
 NC License No. F-0112  
 Engineers | Construction Managers | Planners | Scientists  
 www.rkk.com  
 Responsive People | Creative Solutions

2/27/2024 1:16:11 PM C:\Users\Engineering\OneDrive\Projects\2577A-Ut1.p1\UC39\_psh.dgn