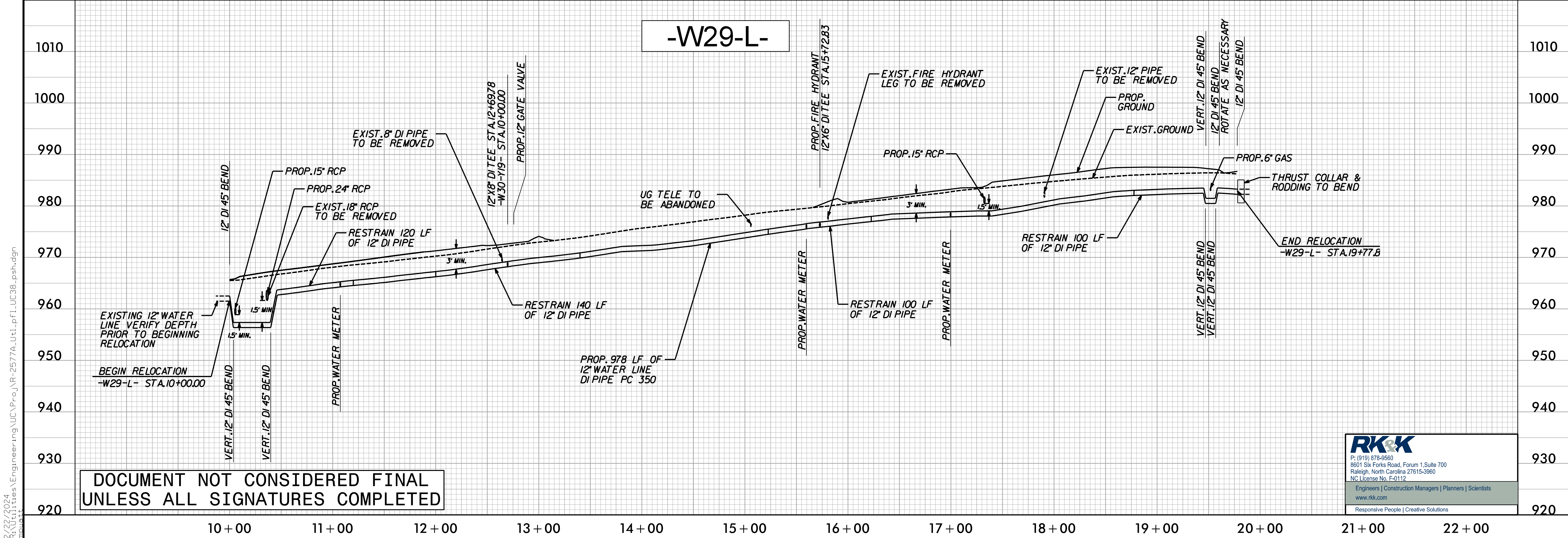
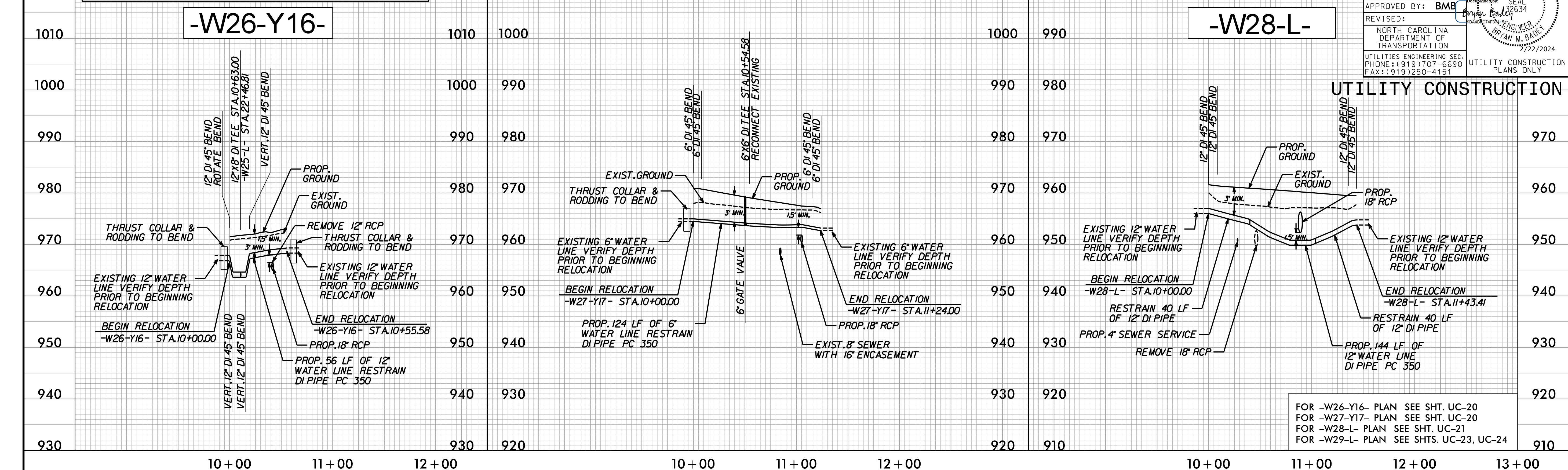


5/28/99

THE INSTALLATION OF THRUST COLLARS MAY NOT BE NECESSARY AT ALL RELOCATIONS DUE TO THE PLACEMENT OF INSERTION VALVES.



2/27/2024 1:16:11 PM C:\Users\Engineering\UC\Projects\NR-2577A-Ut1.pfl\UC38_psh.dgn