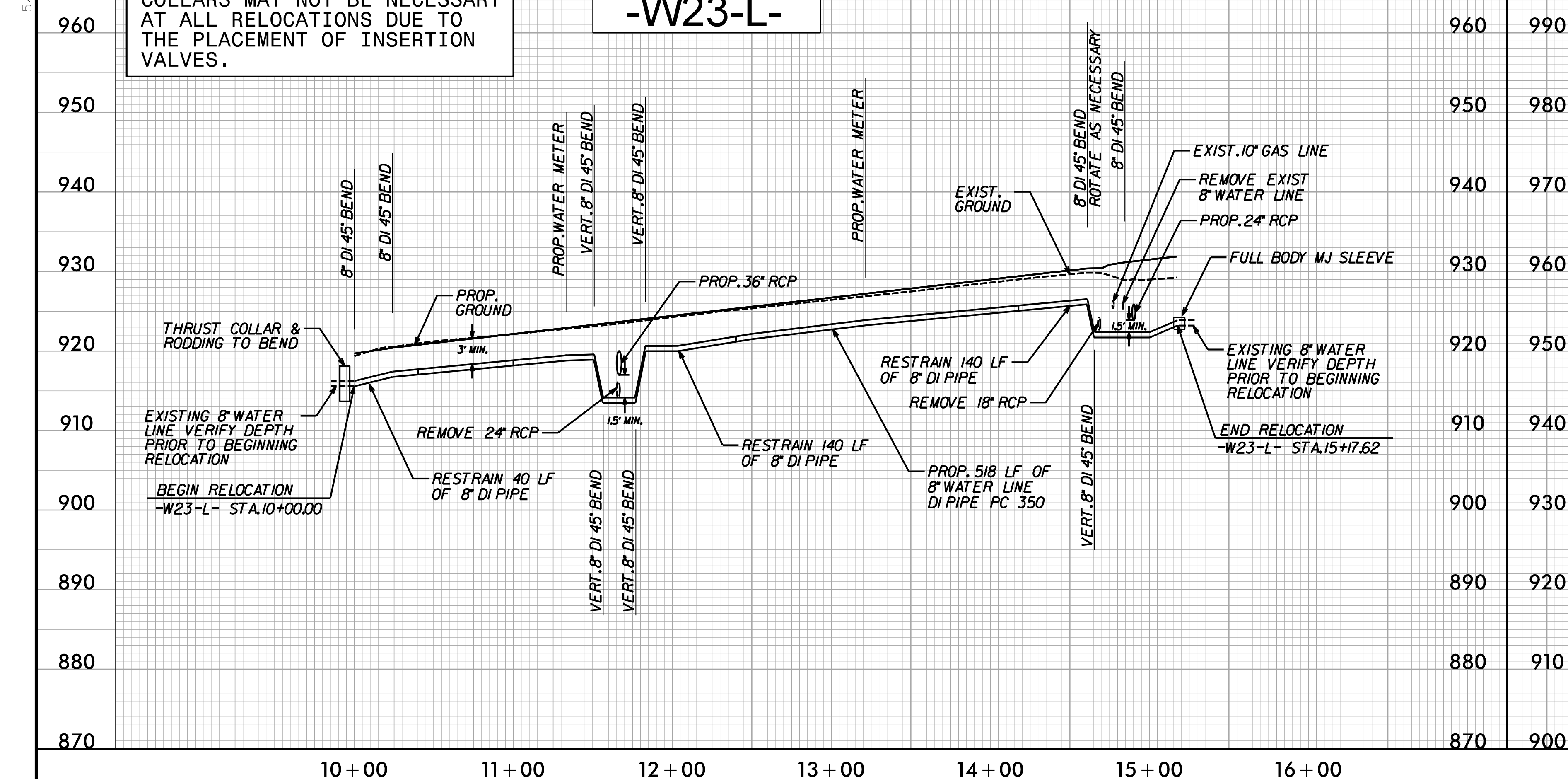


5/28/99

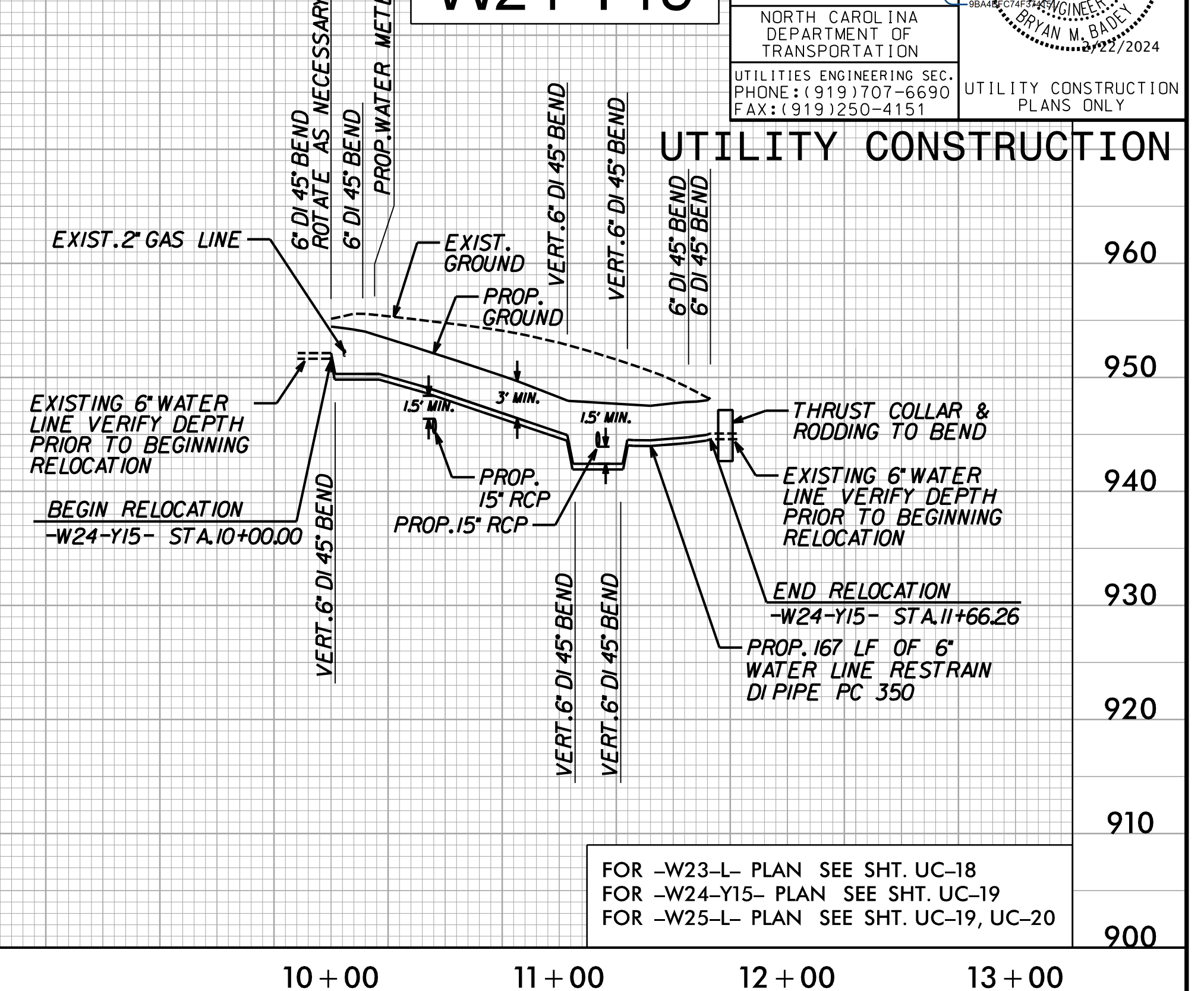
THE INSTALLATION OF THRUST COLLARS MAY NOT BE NECESSARY AT ALL RELOCATIONS DUE TO THE PLACEMENT OF INSERTION VALVES.

### -W23-L-



|   |           |
|---|-----------|
| PROJECT REFERENCE NO.   | SHEET NO. |
| R-2577A   | UC-37     |
| DESIGNED BY: MEP  |           |
| DRAWN BY: MEP   |           |
| CHECKED BY: BMB   |           |
| APPROVED BY: BMB  |           |
| REVISED:  |           |
| NORTH CAROLINA DEPARTMENT OF TRANSPORTATION<br>UTILITIES ENGINEERING SEC.<br>PHONE: (919) 707-6690<br>FAX: (919) 250-4151 |           |
| UTILITY CONSTRUCTION PLANS ONLY   |           |

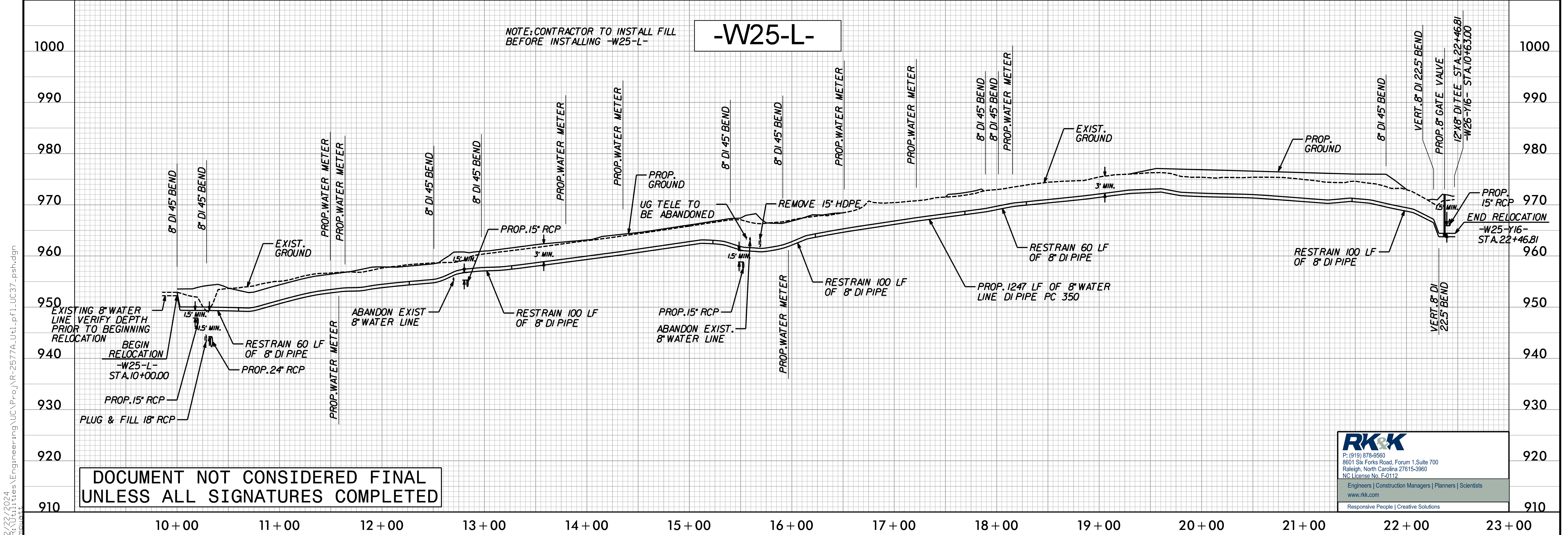
### -W24-Y15-



FOR -W23-L- PLAN SEE SHT. UC-18  
FOR -W24-Y15- PLAN SEE SHT. UC-19  
FOR -W25-L- PLAN SEE SHT. UC-19, UC-20

### -W25-L-

NOTE: CONTRACTOR TO INSTALL FILL BEFORE INSTALLING -W25-L-



DOCUMENT NOT CONSIDERED FINAL UNLESS ALL SIGNATURES COMPLETED

P: (919) 878-9560  
 8601 Six Forks Road, Forum 1, Suite 700  
 Raleigh, North Carolina 27615-3960  
 NC License No. F-0112  
 Engineers | Construction Managers | Planners | Scientists  
 www.rkk.com  
 Responsive People | Creative Solutions

2/22/2024 1:45:11 PM C:\Users\Engineering\OneDrive\Projects\2577A-U1.p1\UC37\_psh.dgn