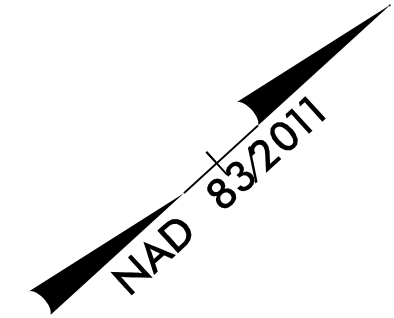


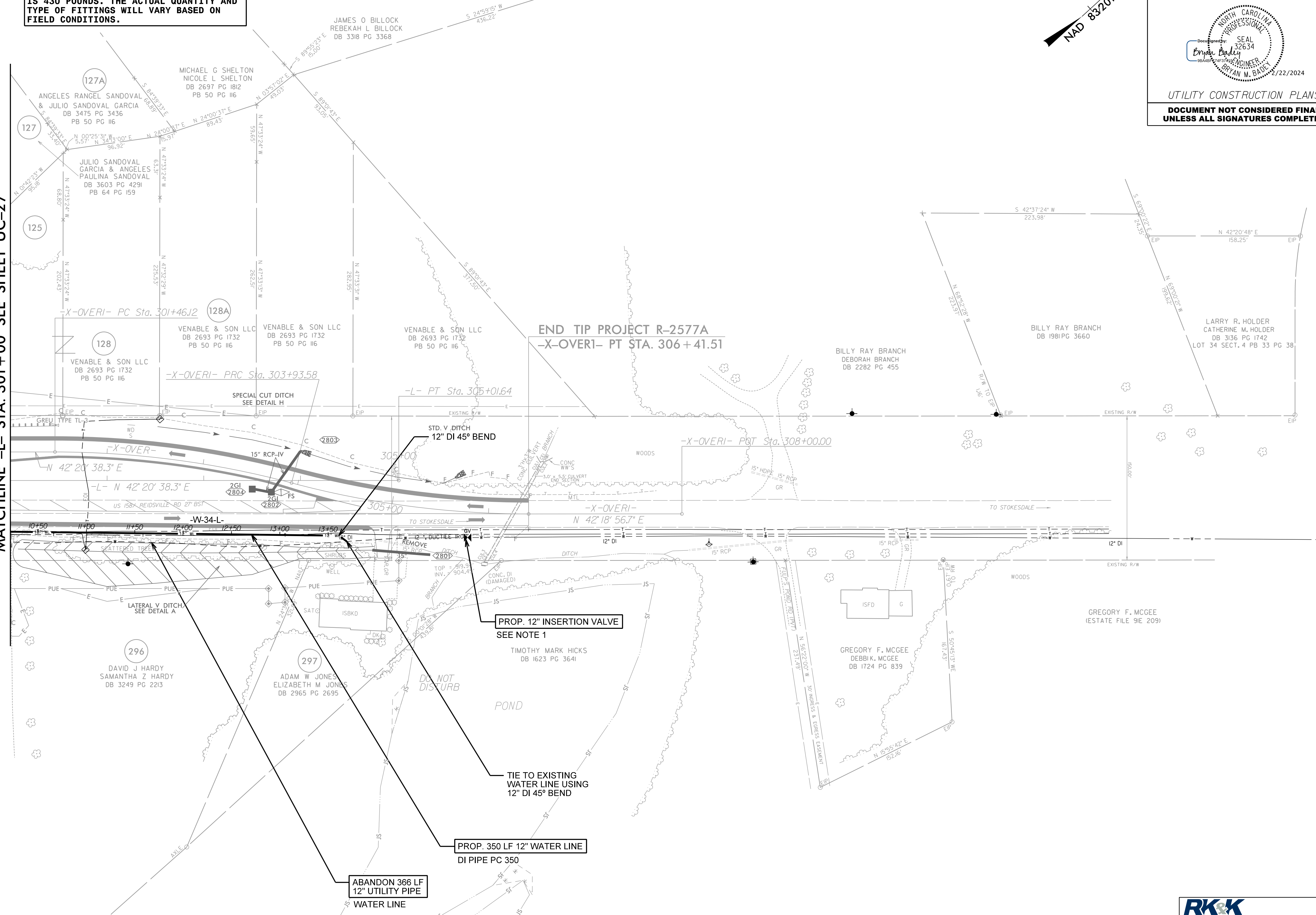
PROJECT REFERENCE NO. R-2577A	SHEET NO. UC-28
RW SHEET NO.	
UTILITY CONSTRUCTION PLANS DOCUMENT NOT CONSIDERED FINAL UNLESS ALL SIGNATURES COMPLETED	

NOTE:
 THE ESTIMATED QUANTITY OF DUCTILE IRON WATER PIPE FITTINGS ON THIS PLAN SHEET IS 430 POUNDS. THE ACTUAL QUANTITY AND TYPE OF FITTINGS WILL VARY BASED ON FIELD CONDITIONS.

NOTE:
 1. INSERTION VALVE LOCATED 125 LF AWAY FROM PROPOSED TIE-IN.



MATCHLINE -L- STA. 301+00 SEE SHEET UC-27



PROP. 12" INSERTION VALVE
 SEE NOTE 1

PROP. 350 LF 12" WATER LINE
 DI PIPE PC 350

ABANDON 366 LF
12" UTILITY PIPE
WATER LINE

TIE TO EXISTING
WATER LINE USING
12" DI 45° BEND

8/17/99

R:\Projects\Engineering\UC\Proc\N-R-2577A_r.dwg UC28_UC28_esh.dgn
 8/22/2024
 R:\Projects\Engineering\UC\Proc\N-R-2577A_r.dwg UC28_UC28_esh.dgn

FOR -W34-L- PROFILE SEE SHT. UC-40

RK&K
 P: (919) 378-9550
 8601 Six Forks Road, Forum 1, Suite 700
 Raleigh, North Carolina 27615-3960
 NC License No. F-0112
 Engineers | Construction Managers | Planners | Scientists
 www.rk.com
 Responsive People | Creative Solutions