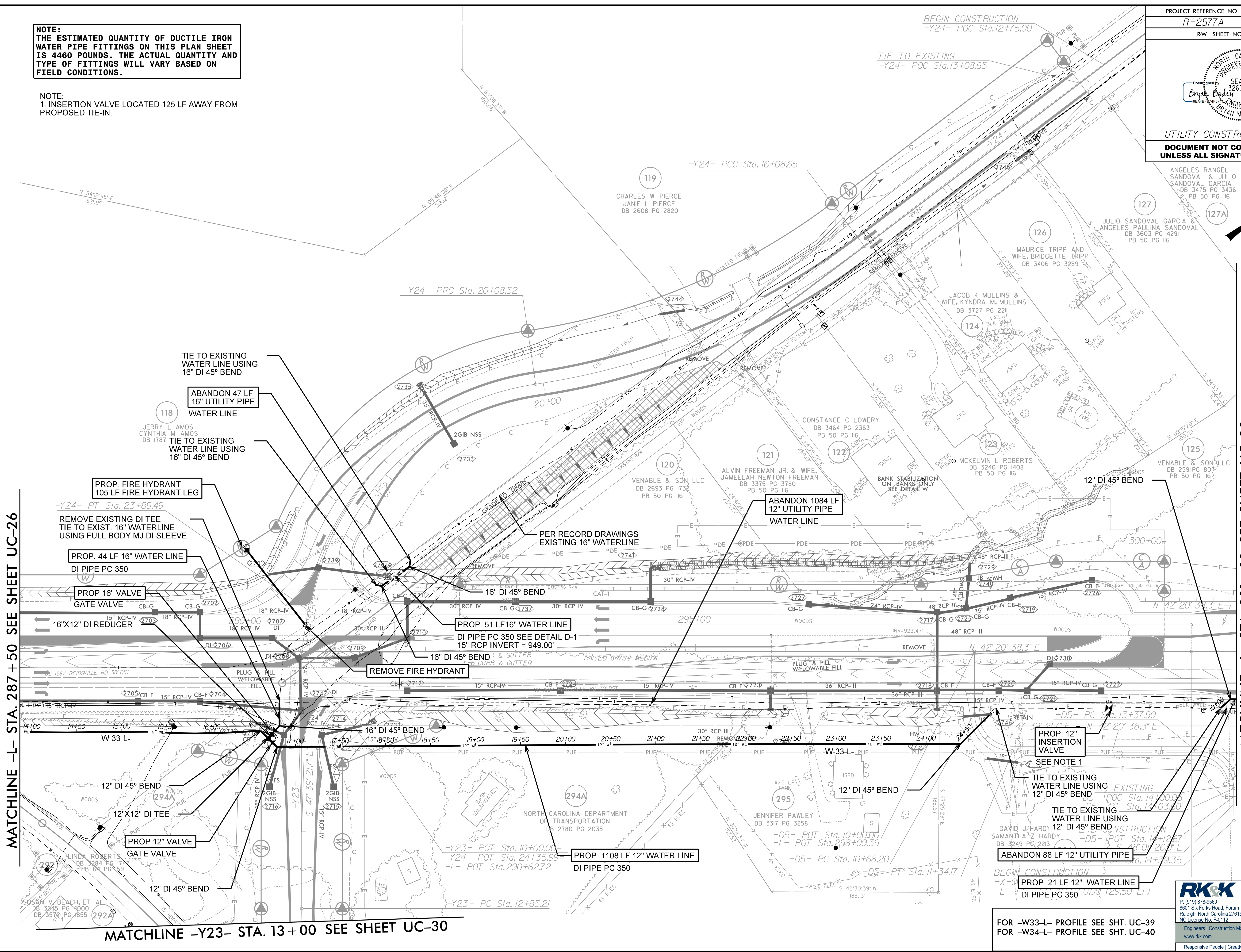


**NOTE:**  
THE ESTIMATED QUANTITY OF DUCTILE IRON WATER PIPE FITTINGS ON THIS PLAN SHEET IS 4460 POUNDS. THE ACTUAL QUANTITY AND TYPE OF FITTINGS WILL VARY BASED ON FIELD CONDITIONS.

**NOTE:**  
1. INSERTION VALVE LOCATED 125 LF AWAY FROM PROPOSED TIE-IN.

8/17/2024  
R:\Projects\Engineering\UC\Proj\R-2577A\_rdy\27\_UC27\_psh.dgn



MATCHLINE -L- STA. 287 + 50 SEE SHEET UC-26

MATCHLINE -L- STA. 301 + 00 SEE SHEET UC-28

MATCHLINE -Y23- STA. 13 + 00 SEE SHEET UC-30

FOR -W33-L- PROFILE SEE SHT. UC-39  
FOR -W34-L- PROFILE SEE SHT. UC-40

**RK&K**  
 P: (919) 378-9550  
 8601 Six Forks Road, Forum 1, Suite 700  
 Raleigh, North Carolina 27615-3960  
 NC License No. F-0112  
 Engineers | Construction Managers | Planners | Scientists  
 www.rk.com  
 Responsive People | Creative Solutions