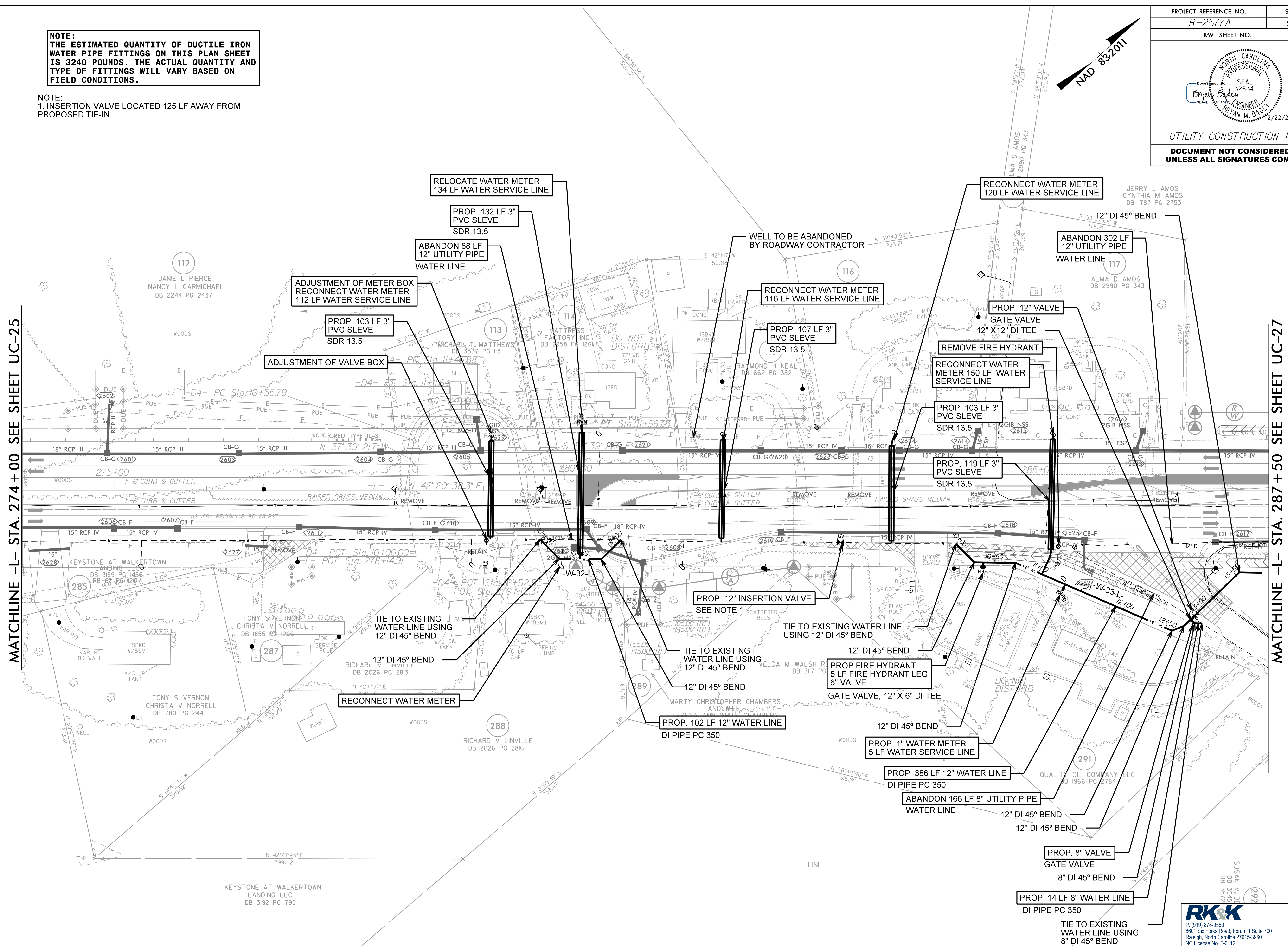


UTILITY CONSTRUCTION PLANS
 DOCUMENT NOT CONSIDERED FINAL
 UNLESS ALL SIGNATURES COMPLETED

NOTE:
 THE ESTIMATED QUANTITY OF DUCTILE IRON
 WATER PIPE FITTINGS ON THIS PLAN SHEET
 IS 3240 POUNDS. THE ACTUAL QUANTITY AND
 TYPE OF FITTINGS WILL VARY BASED ON
 FIELD CONDITIONS.

NOTE:
 1. INSERTION VALVE LOCATED 125 LF AWAY FROM
 PROPOSED TIE-IN.



MATCHLINE -L- STA. 274+00 SEE SHEET UC-25

MATCHLINE -L- STA. 287+50 SEE SHEET UC-27

8/17/2024

R:\Projects\2024\Utility\UC-26\Engineering\UC-26\Proc\N-R-2577A_rduj26_UC26.psh.dgn

FOR -W32-L- PROFILE SEE SHT. UC-39
 FOR -W33-L- PROFILE SEE SHT. UC-39

RKK
 P: (919) 378-9500
 8601 Six Forks Road, Forum 1, Suite 700
 Raleigh, North Carolina 27615-3960
 NC License No. F-0112
 Engineers | Construction Managers | Planners | Scientists
 www.rkk.com
 Responsive People | Creative Solutions