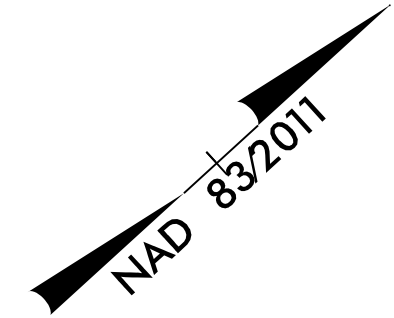
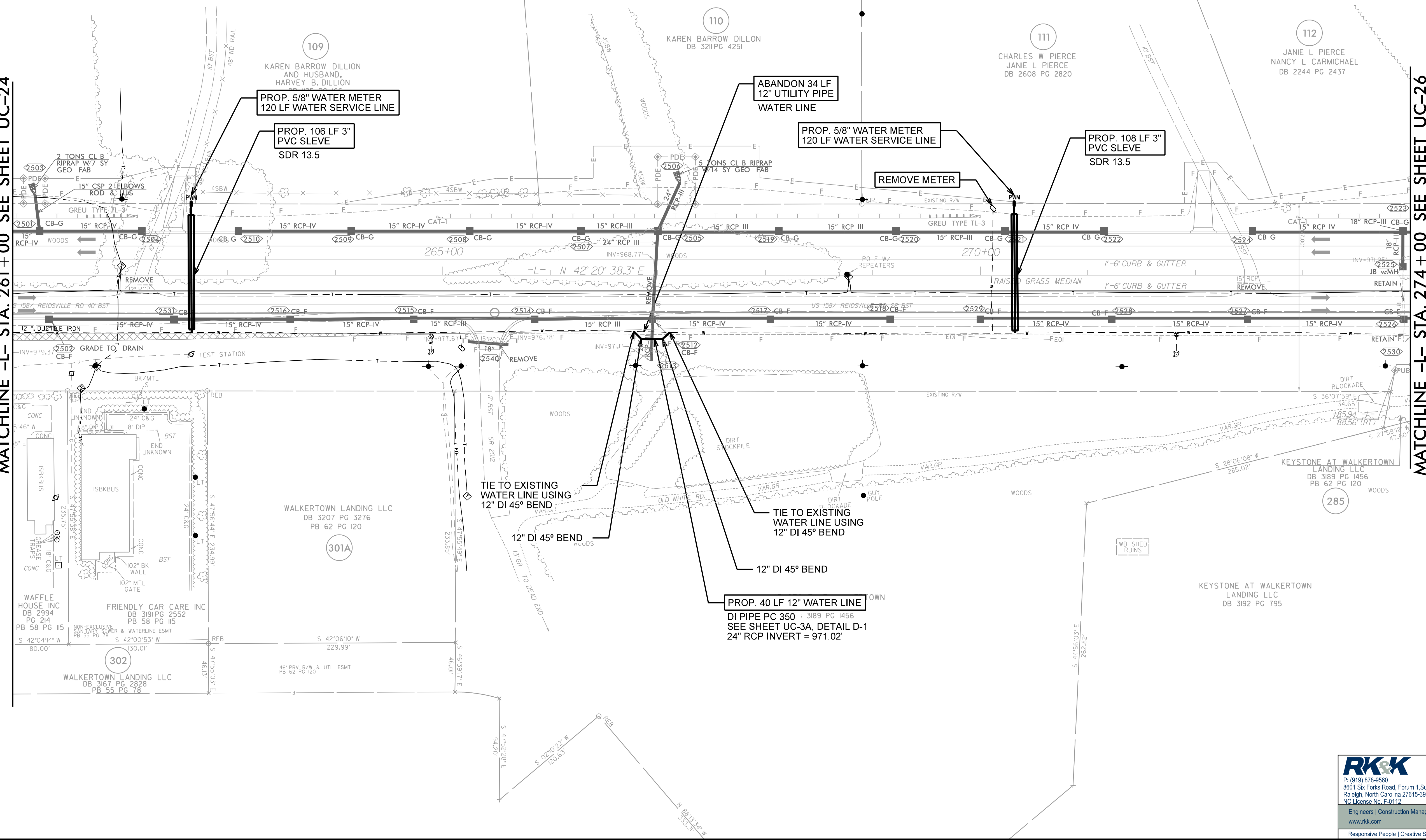


NOTE:
THE ESTIMATED QUANTITY OF DUCTILE IRON WATER PIPE FITTINGS ON THIS PLAN SHEET IS 860 POUNDS. THE ACTUAL QUANTITY AND TYPE OF FITTINGS WILL VARY BASED ON FIELD CONDITIONS.



MATCHLINE -L- STA. 261+00 SEE SHEET UC-24

MATCHLINE -L- STA. 274+00 SEE SHEET UC-26



8/17/99

R:\Projects\Engineering\UC\Proc\N-R-2577A_rdy\25_UC25_psh.dgn