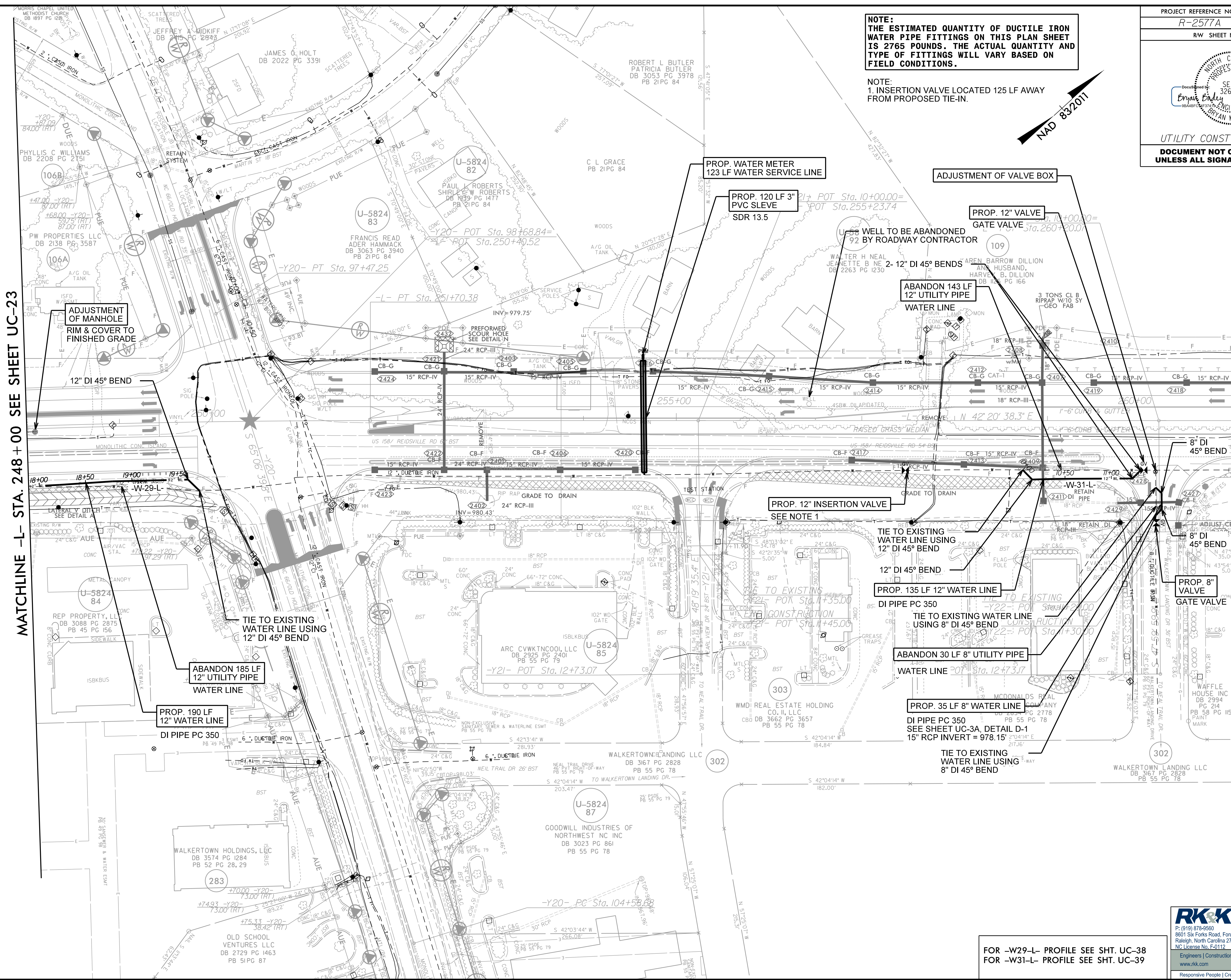
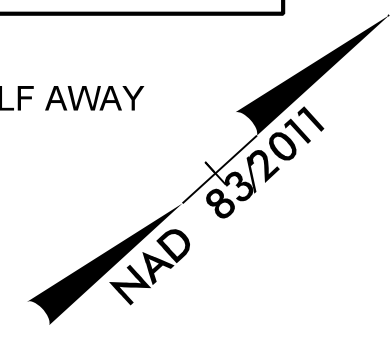


NOTE:
THE ESTIMATED QUANTITY OF DUCTILE IRON WATER PIPE FITTINGS ON THIS PLAN SHEET IS 2765 POUNDS. THE ACTUAL QUANTITY AND TYPE OF FITTINGS WILL VARY BASED ON FIELD CONDITIONS.

NOTE:
1. INSERTION VALVE LOCATED 125 LF AWAY FROM PROPOSED TIE-IN.



MATCHLINE -L- STA. 248 + 00 SEE SHEET UC-23

MATCHLINE -L- STA. 261 + 00 SEE SHEET UC-25

ADJUSTMENT OF MANHOLE RIM & COVER TO FINISHED GRADE

PROP. WATER METER 123 LF WATER SERVICE LINE

PROP. 120 LF 3" PVC SLEEVE SDR 13.5

ADJUSTMENT OF VALVE BOX

PROP. 12" VALVE GATE VALVE

WELL TO BE ABANDONED 92 BY ROADWAY CONTRACTOR

ABANDON 143 LF 12" UTILITY PIPE WATER LINE

12" DI 45° BEND

PROP. 12" INSERTION VALVE SEE NOTE 1

TIE TO EXISTING WATER LINE USING 12" DI 45° BEND

PROP. 135 LF 12" WATER LINE DI PIPE PC 350

TIE TO EXISTING WATER LINE USING 8" DI 45° BEND

ABANDON 30 LF 8" UTILITY PIPE WATER LINE

PROP. 35 LF 8" WATER LINE DI PIPE PC 350 SEE SHEET UC-3A, DETAIL D-1 15" RCP INVERT = 978.15'

TIE TO EXISTING WATER LINE USING 8" DI 45° BEND

ABANDON 185 LF 12" UTILITY PIPE WATER LINE

PROP. 190 LF 12" WATER LINE DI PIPE PC 350

TIE TO EXISTING WATER LINE USING 12" DI 45° BEND

FOR -W29-L- PROFILE SEE SHT. UC-38
FOR -W31-L- PROFILE SEE SHT. UC-39

8/17/2024 R:\Projects\Engineering\UC\Proc\N-R-2577A-rdj\24_UC24_psh.dgn