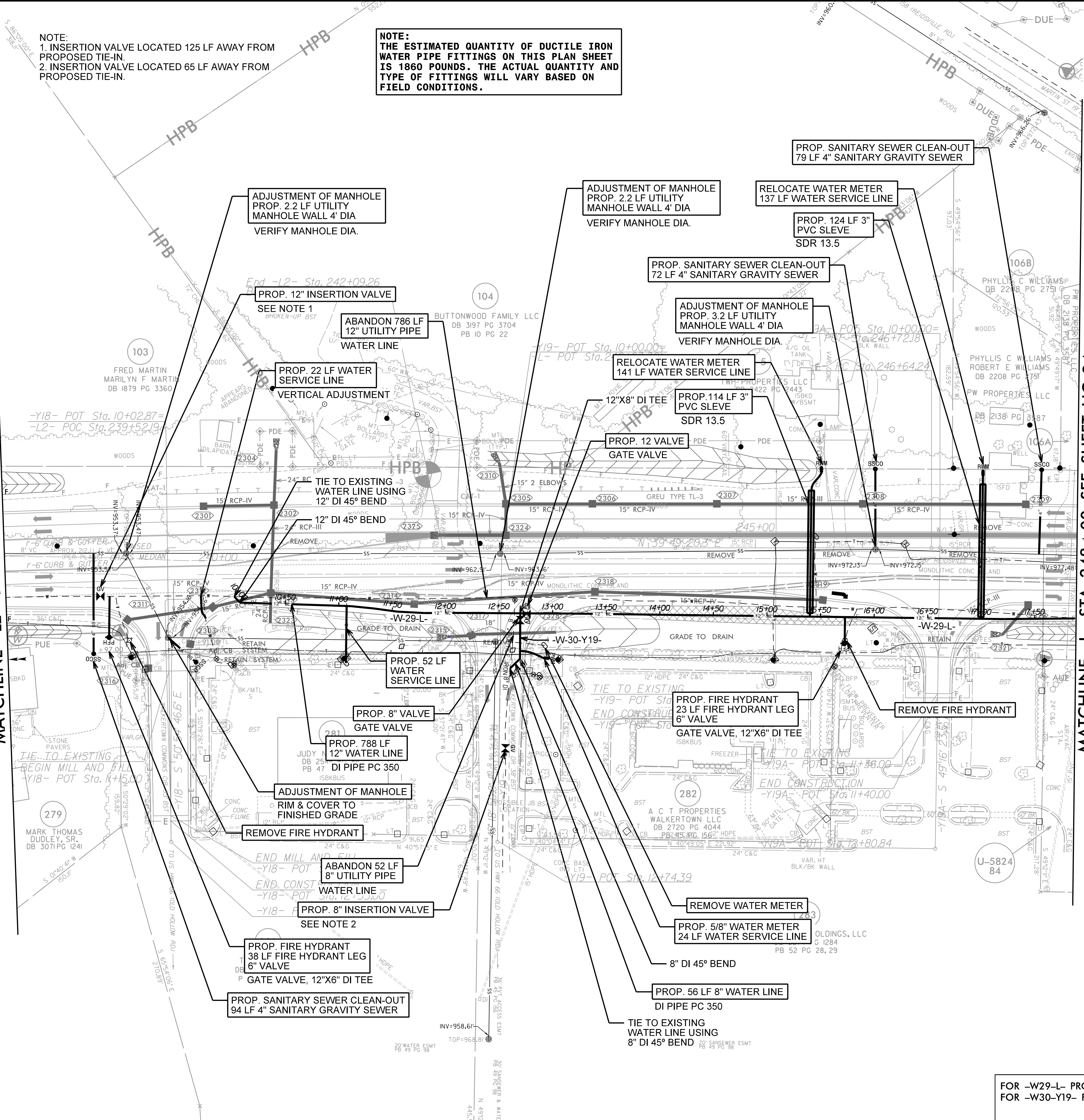


NOTE:
1. INSERTION VALVE LOCATED 125 LF AWAY FROM PROPOSED TIE-IN.
2. INSERTION VALVE LOCATED 65 LF AWAY FROM PROPOSED TIE-IN.

NOTE:
THE ESTIMATED QUANTITY OF DUCTILE IRON WATER PIPE FITTINGS ON THIS PLAN SHEET IS 1860 POUNDS. THE ACTUAL QUANTITY AND TYPE OF FITTINGS WILL VARY BASED ON FIELD CONDITIONS.

MATCHLINE -L2- STA. 238+00 SEE SHEET UC-22

MATCHLINE -L- STA. 248+00 SEE SHEET UC-24



ADJUSTMENT OF MANHOLE
PROP. 2.2 LF UTILITY
MANHOLE WALL 4' DIA
VERIFY MANHOLE DIA.

ADJUSTMENT OF MANHOLE
PROP. 2.2 LF UTILITY
MANHOLE WALL 4' DIA
VERIFY MANHOLE DIA.

PROP. SANITARY SEWER CLEAN-OUT
79 LF 4" SANITARY GRAVITY SEWER

RELOCATE WATER METER
137 LF WATER SERVICE LINE

PROP. 124 LF 3" PVC SLEVE
SDR 13.5

PROP. SANITARY SEWER CLEAN-OUT
72 LF 4" SANITARY GRAVITY SEWER

ADJUSTMENT OF MANHOLE
PROP. 3.2 LF UTILITY
MANHOLE WALL 4' DIA
VERIFY MANHOLE DIA.

RELOCATE WATER METER
141 LF WATER SERVICE LINE

PROP. 114 LF 3" PVC SLEVE
SDR 13.5

PROP. 12 VALVE
GATE VALVE

PROP. 12" INSERTION VALVE
SEE NOTE 1

ABANDON 786 LF
12" UTILITY PIPE
WATER LINE

PROP. 22 LF WATER
SERVICE LINE
VERTICAL ADJUSTMENT

TIE TO EXISTING
WATER LINE USING
12" DI 45° BEND

12" DI 45° BEND

PROP. 52 LF
WATER
SERVICE LINE

PROP. 8" VALVE
GATE VALVE

PROP. 788 LF
12" WATER LINE
DI PIPE PC 350

ADJUSTMENT OF MANHOLE
RIM & COVER TO
FINISHED GRADE

REMOVE FIRE HYDRANT

ABANDON 52 LF
8" UTILITY PIPE
WATER LINE

PROP. 8" INSERTION VALVE
SEE NOTE 2

PROP. FIRE HYDRANT
38 LF FIRE HYDRANT LEG
6" VALVE
GATE VALVE, 12"x6" DI TEE

PROP. SANITARY SEWER CLEAN-OUT
94 LF 4" SANITARY GRAVITY SEWER

PROP. FIRE HYDRANT
23 LF FIRE HYDRANT LEG
6" VALVE
GATE VALVE, 12"x6" DI TEE

REMOVE FIRE HYDRANT

REMOVE WATER METER

PROP. 5/8" WATER METER
24 LF WATER SERVICE LINE

PROP. 56 LF 8" WATER LINE
DI PIPE PC 350

TIE TO EXISTING
WATER LINE USING
8" DI 45° BEND