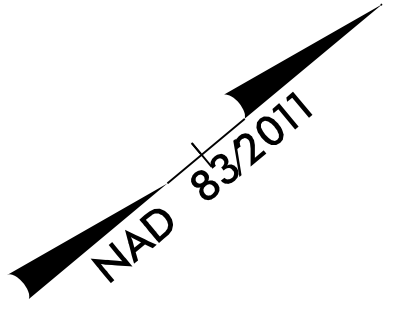
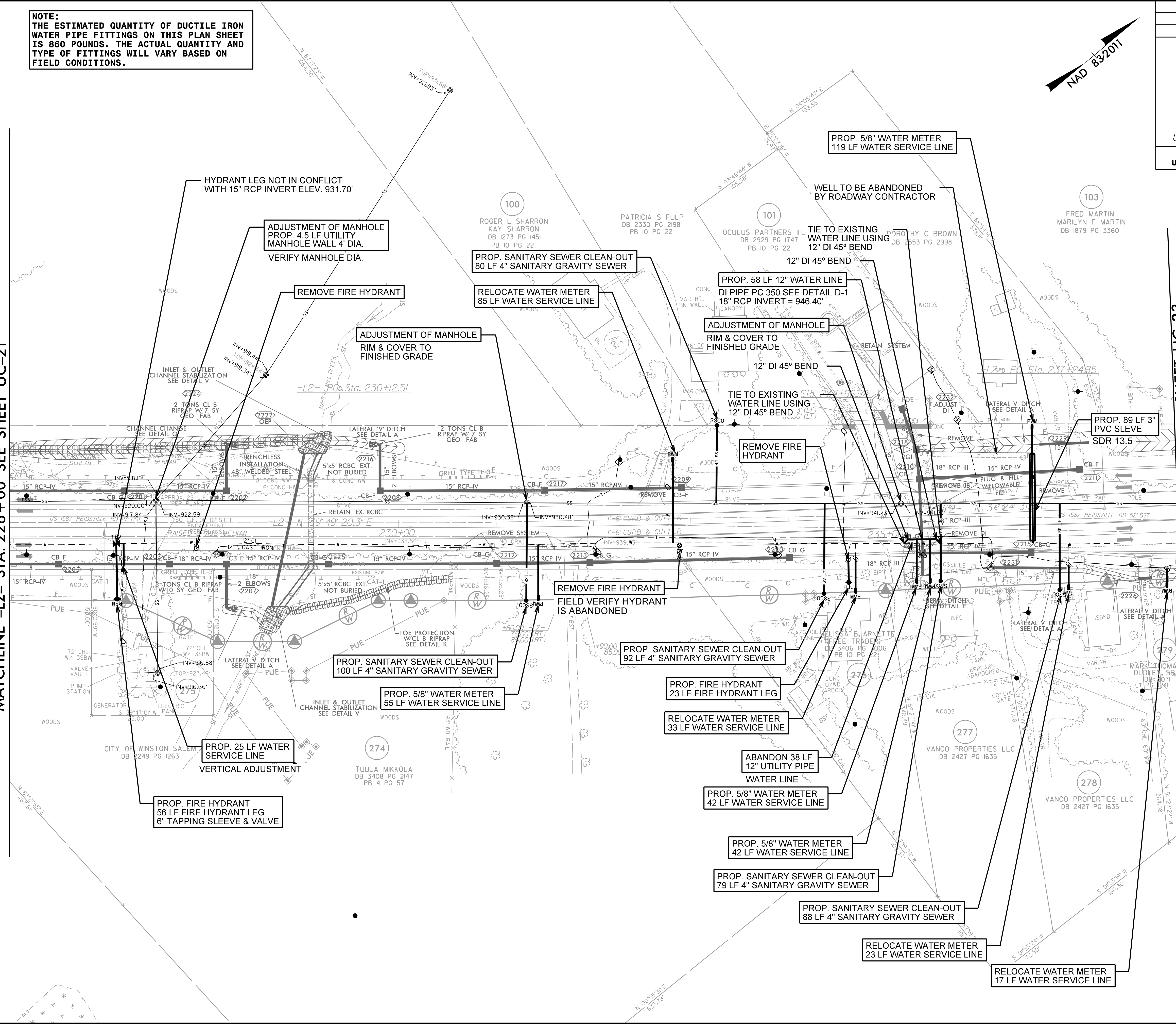


**NOTE:**  
THE ESTIMATED QUANTITY OF DUCTILE IRON  
WATER PIPE FITTINGS ON THIS PLAN SHEET  
IS 860 POUNDS. THE ACTUAL QUANTITY AND  
TYPE OF FITTINGS WILL VARY BASED ON  
FIELD CONDITIONS.



MATCHLINE -L2- STA. 226+00 SEE SHEET UC-21

MATCHLINE -L2- STA. 238+00 SEE SHEET UC-23



8/17/99

R:\GIS\11\files\Engineering\UC\Proc\N-2577A-rd\22-UC22\_psh.dgn