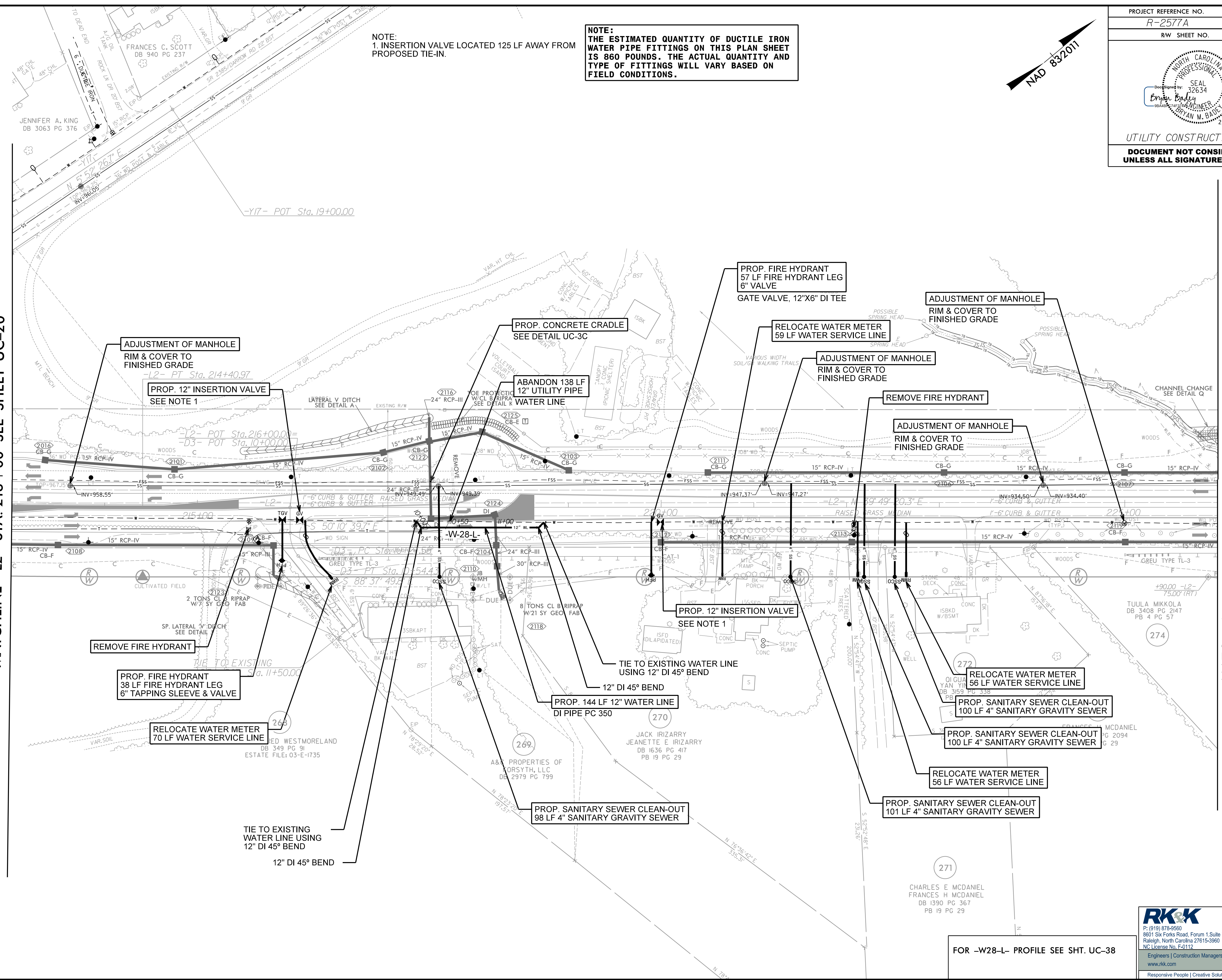


NOTE:  
1. INSERTION VALVE LOCATED 125 LF AWAY FROM PROPOSED TIE-IN.

NOTE:  
THE ESTIMATED QUANTITY OF DUCTILE IRON WATER PIPE FITTINGS ON THIS PLAN SHEET IS 860 POUNDS. THE ACTUAL QUANTITY AND TYPE OF FITTINGS WILL VARY BASED ON FIELD CONDITIONS.

MATCHLINE -L2- STA. 213+00 SEE SHEET UC-20

MATCHLINE -L2- STA. 226+00 SEE SHEET UC-22



FOR -W28-L- PROFILE SEE SHT. UC-38

8/17/99

R:\Projects\Engineering\UC\Proc\R-2577A\_rdy\21\_UC21\_psh.dgn