

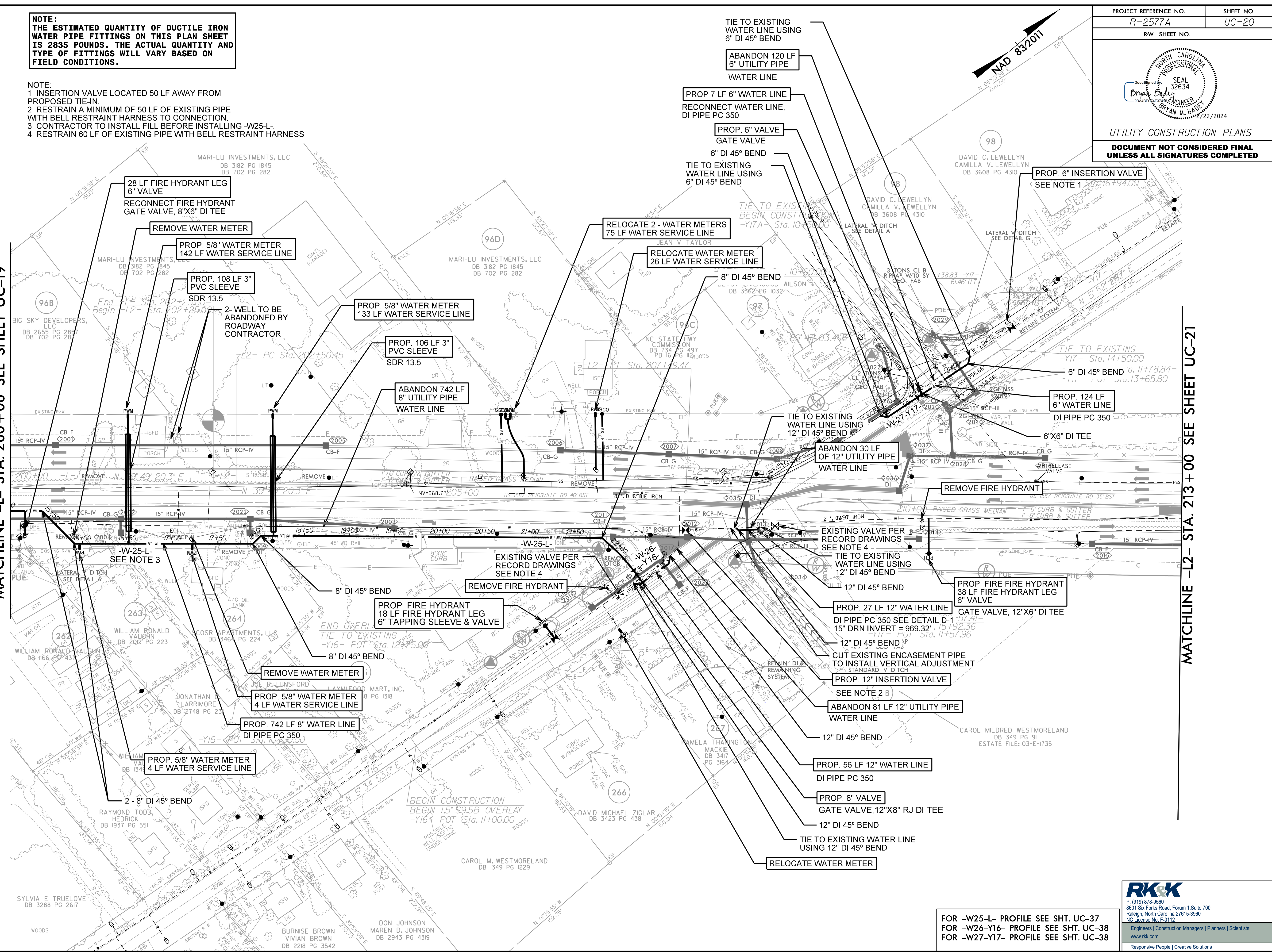
UTILITY CONSTRUCTION PLANS
DOCUMENT NOT CONSIDERED FINAL
UNLESS ALL SIGNATURES COMPLETED

NOTE:
THE ESTIMATED QUANTITY OF DUCTILE IRON WATER PIPE FITTINGS ON THIS PLAN SHEET IS 2835 POUNDS. THE ACTUAL QUANTITY AND TYPE OF FITTINGS WILL VARY BASED ON FIELD CONDITIONS.

- NOTE:**
1. INSERTION VALVE LOCATED 50 LF AWAY FROM PROPOSED TIE-IN.
 2. RESTRAIN A MINIMUM OF 50 LF OF EXISTING PIPE WITH BELL RESTRAINT HARNESS TO CONNECTION.
 3. CONTRACTOR TO INSTALL FILL BEFORE INSTALLING -W25-L-.
 4. RESTRAIN 60 LF OF EXISTING PIPE WITH BELL RESTRAINT HARNESS

MATCHLINE -L- STA. 200+00 SEE SHEET UC-19

MATCHLINE -L2- STA. 213+00 SEE SHEET UC-21



FOR -W25-L- PROFILE SEE SHT. UC-37
FOR -W26-Y16- PROFILE SEE SHT. UC-38
FOR -W27-Y17- PROFILE SEE SHT. UC-38

RK&K
P: (919) 378-9550
8601 Six Forks Road, Forum 1, Suite 700
Raleigh, North Carolina 27615-3960
NC License No. F-0112
Engineers | Construction Managers | Planners | Scientists
www.rk.com
Responsive People | Creative Solutions

8/17/2024

R:\Projects\Engineering\UC\Proc\N-R-2577A-r.dwg UC20_psh.dgn