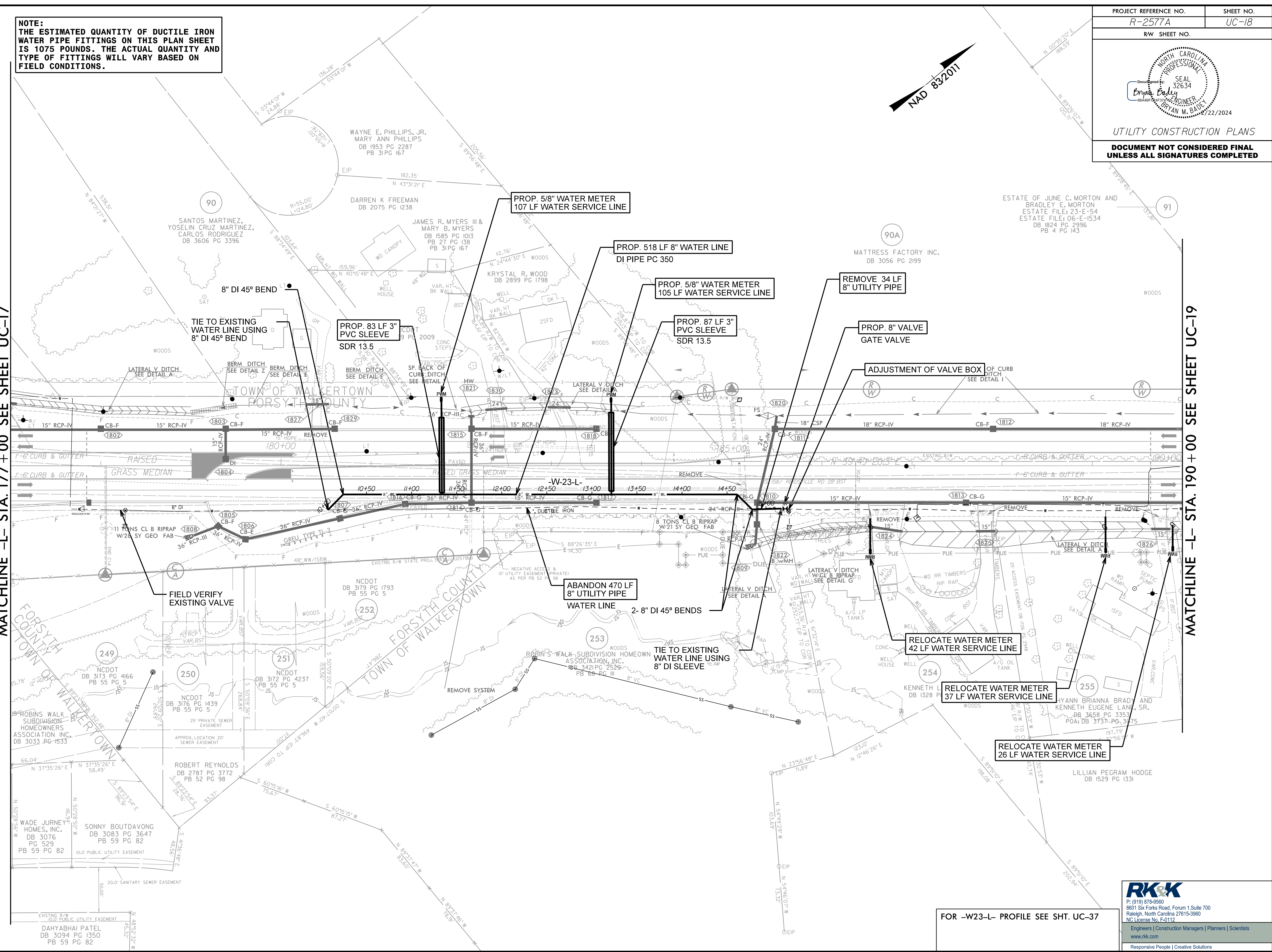


NOTE:
THE ESTIMATED QUANTITY OF DUCTILE IRON WATER PIPE FITTINGS ON THIS PLAN SHEET IS 1075 POUNDS. THE ACTUAL QUANTITY AND TYPE OF FITTINGS WILL VARY BASED ON FIELD CONDITIONS.



MATCHLINE -L- STA. 177 + 00 SEE SHEET UC-17

MATCHLINE -L- STA. 190 + 00 SEE SHEET UC-19



FOR -W23-L- PROFILE SEE SHT. UC-37

8/17/2024

R:\Projects\Engineering\UC\Proc\N-R-2577A_rdy\18_UC18_psh.dgn