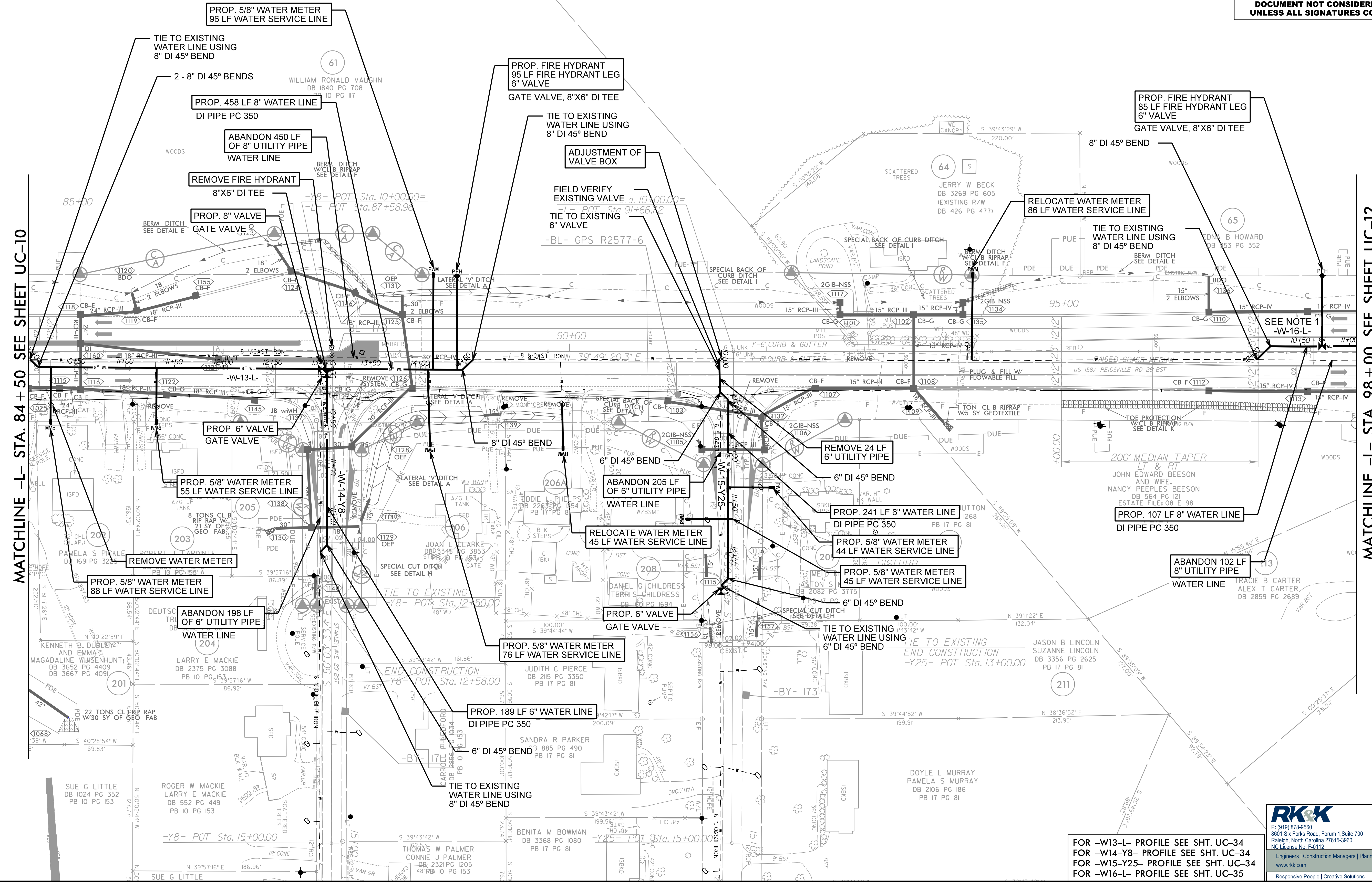
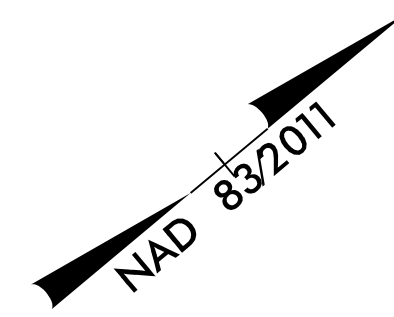


**NOTE:**  
THE ESTIMATED QUANTITY OF DUCTILE IRON WATER PIPE FITTINGS ON THIS PLAN SHEET IS 2085 POUNDS. THE ACTUAL QUANTITY AND TYPE OF FITTINGS WILL VARY BASED ON FIELD CONDITIONS.

NOTES:  
1. CONTRACTOR TO INSTALL FILL BEFORE INSTALLING -W16-L.



MATCHLINE -L- STA. 84 + 50 SEE SHEET UC-10

MATCHLINE -L- STA. 98 + 00 SEE SHEET UC-12

FOR -W13-L- PROFILE SEE SHT. UC-34  
 FOR -W14-Y8- PROFILE SEE SHT. UC-34  
 FOR -W15-Y25- PROFILE SEE SHT. UC-34  
 FOR -W16-L- PROFILE SEE SHT. UC-35

**RK&K**  
 P: (919) 378-9550  
 8601 Six Forks Road, Forum 1, Suite 700  
 Raleigh, North Carolina 27615-3960  
 NC License No. F-0112  
 Engineers | Construction Managers | Planners | Scientists  
 www.rk.com  
 Responsive People | Creative Solutions

8/17/2024  
 R:\Projects\Engineering\UC\Proc\N-R-2577A-rdjl1.uci1.psh.dgn