

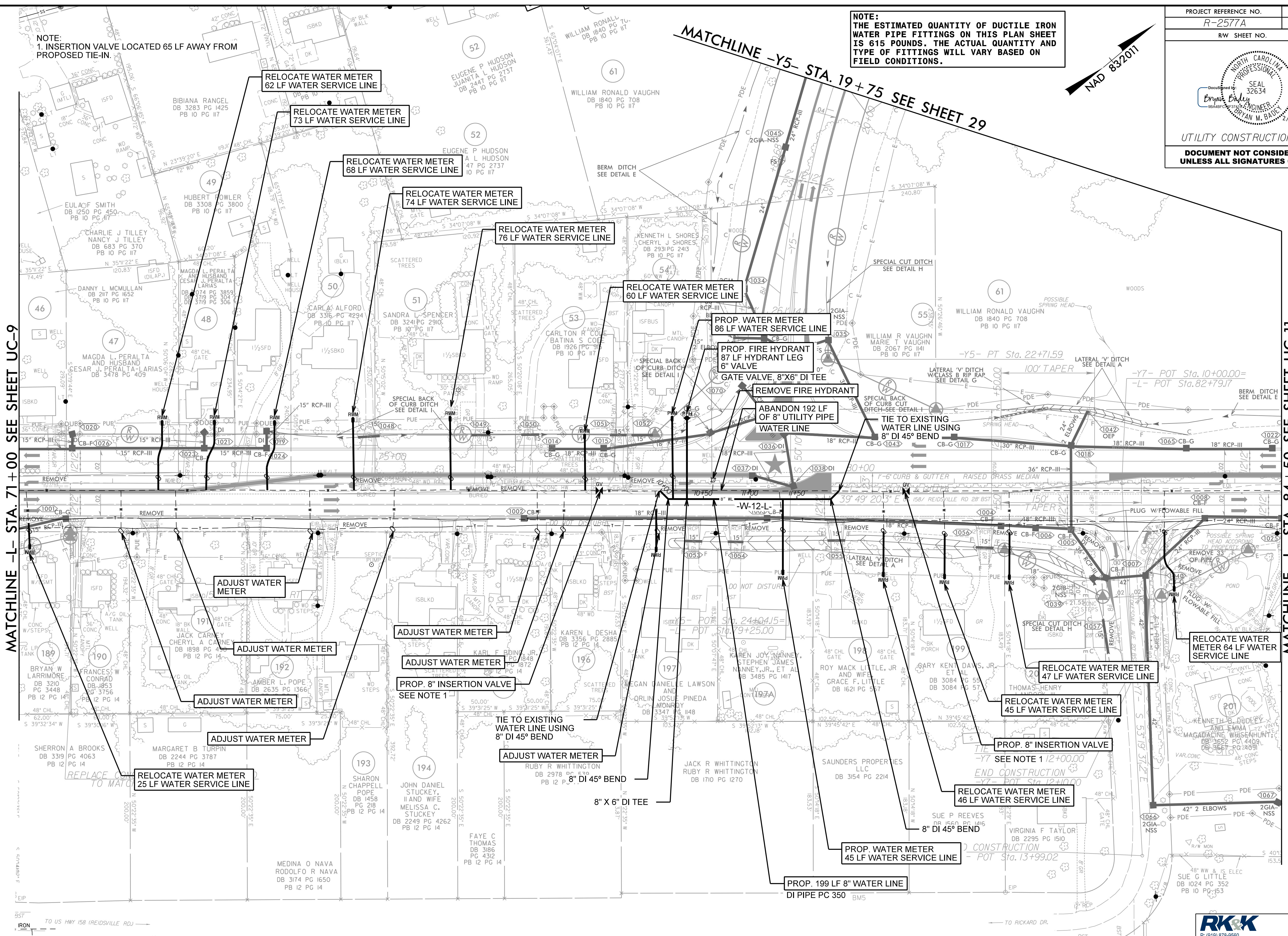
NOTE:
THE ESTIMATED QUANTITY OF DUCTILE IRON WATER PIPE FITTINGS ON THIS PLAN SHEET IS 615 POUNDS. THE ACTUAL QUANTITY AND TYPE OF FITTINGS WILL VARY BASED ON FIELD CONDITIONS.



MATCHLINE -Y5- STA. 19+75 SEE SHEET 29

MATCHLINE -L- STA. 71+00 SEE SHEET UC-9

MATCHLINE -L- STA. 84+50 SEE SHEET UC-11



NOTE:
1. INSERTION VALVE LOCATED 65 LF AWAY FROM PROPOSED TIE-IN.

RELOCATE WATER METER
62 LF WATER SERVICE LINE

RELOCATE WATER METER
73 LF WATER SERVICE LINE

RELOCATE WATER METER
68 LF WATER SERVICE LINE

RELOCATE WATER METER
74 LF WATER SERVICE LINE

RELOCATE WATER METER
76 LF WATER SERVICE LINE

RELOCATE WATER METER
60 LF WATER SERVICE LINE

PROP. WATER METER
86 LF WATER SERVICE LINE

PROP. FIRE HYDRANT
87 LF HYDRANT LEG
6" VALVE

REMOVE FIRE HYDRANT

ABANDON 192 LF
OF 8" UTILITY PIPE
WATER LINE

TIE TO EXISTING
WATER LINE USING
8" DI 45° BEND

ADJUST WATER METER

ADJUST WATER METER

ADJUST WATER METER

PROP. 8" INSERTION VALVE
SEE NOTE 1

ADJUST WATER METER

ADJUST WATER METER

RELOCATE WATER METER
25 LF WATER SERVICE LINE

TIE TO EXISTING
WATER LINE USING
8" DI 45° BEND

ADJUST WATER METER

8" X 6" DI TEE

RELOCATE WATER METER
47 LF WATER SERVICE LINE

RELOCATE WATER METER
45 LF WATER SERVICE LINE

PROP. 8" INSERTION VALVE
SEE NOTE 1 12+00.00

RELOCATE WATER METER
46 LF WATER SERVICE LINE

PROP. WATER METER
45 LF WATER SERVICE LINE

PROP. 199 LF 8" WATER LINE
DI PIPE PC 350 BM5

RELOCATE WATER METER
64 LF WATER SERVICE LINE

FOR -W12-L- PROFILE SEE SHT. UC-34

8/17/2024 R:\Projects\Engineering\UC\Proc\N-R-2577A-rd\10_UC10_psh.dgn

MANNA BAPTIST CH
DB 1636 PG 1729